

Converting Colors

HunterLab(51.6241, 14.4492,
19.0899)

Have a look what the booklet for
HunterLab(51.6241, 14.4492,
19.0899) contains.

HunterLab(51.5816, 14.3808, 19.0368)	3
<i>Conversions</i>	4
<i>Details</i>	6
<i>Harmonies</i>	12
<i>Previews</i>	24
<i>Color Blindness Simulation</i>	28
<i>CSS Examples</i>	31

Color

**HunterLab(51.5816, 14.3808,
19.0368)**

Conversions

Conversions Part 1

Format	Color
Hex	BB7F61
RGB	187, 127, 97
RGB Percent	73%, 50%, 38%
CMY	0.2667, 0.5019, 0.6196
CMYK	0.00, 0.32, 0.48, 0.27
HSL	20°, 40%, 56%
HSV	20°, 48%, 73%
XYZ	30.2406, 26.6066, 14.8510
YIQ	141.5200, 45.3900, 3.3900

Conversions

Conversions Part 2

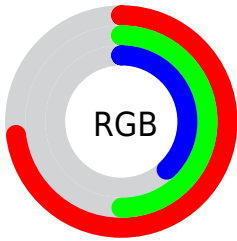
Format	Color
R_{YB}	187, 142, 97
Decimal	12287841
CIE _{Lab}	58.61, 19.75, 25.69
CIE _{LCh}	59, 32.400, 52.444
Yxy	26.6079, 0.4218, 0.3711
Android (android.graphics.Color)	4290477921 (0xFFBB7F61)
YUV	141.5200, -21.9484, 39.8860
Hunter-Lab	51.5816, 14.3808, 19.0368

Details

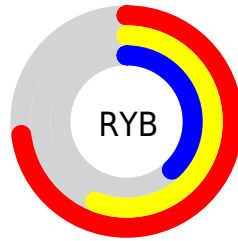
The HunterLab color **51.5816, 14.3808, 19.0368** is a dark color, and the websafe version is hex **CC9966**. A complement of this color would be **54.9926, -11.9874, -17.0112**, and the grayscale version is **51.8907, -2.7688, 2.8193**.

A 20% lighter version of the original color is **73.6160, 15.0146, 23.0599**, and **32.1921, 13.4714, 14.5148** is the 20% darker color. If you saturate the color by 10%, you get **48.2450, 19.0112, 21.1336**, and if you desaturate by 10%, it is **55.1549, 10.0497, 16.4982**.

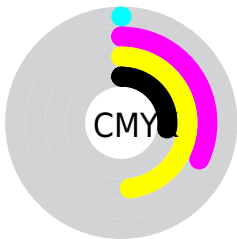
Distribution



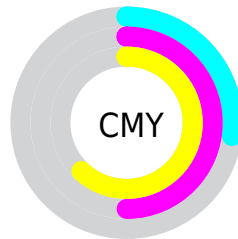
- Red (73%)
- Green (50%)
- Blue (38%)



- Red (73%)
- Yellow (56%)
- Blue (38%)



- Cyan (0%)
- Magenta (32%)
- Yellow (48%)
- Black (27%)



- Cyan (27%)
- Magenta (50%)
- Yellow (62%)

Brightness & Saturation Gradients

These gradients show how the HunterLab color 51.5816, 14.3808, 19.0368 changes by changing the brightness by 10 percent. The first figure shows a shift by +10% for each color and the second figure -10%.

Similar to the brightness gradients but the following saturation gradients show a change of the HunterLab color 51.5816, 14.3808, 19.0368 by changing the saturation by 10% instead.

■ 51.5816, 14.3808,
19.0368

■ 51.5816, 14.3808,
19.0368

169.0425, 15.5924,
36.2301

■ 41.5680, 13.8726,
16.8742

■ 73.6574, 15.1152,
23.1207

■ 32.3011, 13.2582,
14.5919

■ 85.6388, 15.3656,
25.0775

■ 23.8482, 12.5176,
12.1449

■ 98.2075, 15.5471,
26.9945

■ 16.2970, 11.6286,
9.7801

■ 111.3373, 15.6654,
28.8804

■ 9.7717, 10.5688,
6.8402

125.0050, 15.7253,
30.7421

0.0000, INF, NaN

0.0000, NaN, NaN

139.1903, 15.7308,

32.5849

0.0000, NaN, NaN

153.8749, 15.6855,
34.4131

0.0000, NaN, NaN

■ 51.5816, 14.3808,
19.0368

■ 51.5816, 14.3808,
19.0368

■ 48.2450, 19.0112,
21.1336

■ 55.1549, 10.0497,
16.4982

■ 45.1708, 23.9204,
22.7139

■ 58.9348, 6.0287,
13.5829

■ 42.3917, 29.0415,
23.7085

■ 62.8993, 2.3036,
10.3496

■ 39.9389, 34.2605,
24.0679

■ 67.0283, -1.1453,
6.8472

■ 37.8365, 39.3885,
23.8467

■ 71.3046, -4.3417,
3.1155

■ 37.4798, 40.3048,
23.8005

■ 75.7134, -7.3101,
-0.8129

■ 80.2423, -10.0740,
-4.9116

■ 84.8803, -12.6556,
-9.1595

■ 89.2374, -17.2105,
-8.1718

Harmonies

Analogous

The Analogous color harmony consists of three colors that are next to each other on the color wheel.



51.5829, 24.0397, 11.5201



51.5816, 14.3808, 19.0368



51.5829, 0.7694, 22.0419

Triad

The Triadic color harmony groups three colors that are evenly spaced from another and form a triangle on the color wheel.



51.5829, 14.3783, 19.0375



51.5829, -26.4450, 6.0081



51.5829, 7.7369, -26.2827

Complementary

The Complementary color scheme is a pair of colors which are on the opposite of each other on the color wheel.



51.5816, 14.3808, 19.0368



54.9926, -11.9874, -17.0112

Split Complementary

Split-complementary colors differ from the complementary color scheme. The scheme consists of three colors, the original color and two neighbors of the complement color.



51.5829, -6.1874, -28.8826



51.5816, 14.3808, 19.0368



51.5829, -24.9969, -7.7521

Square

The Square scheme is like the rectangle color scheme, but the four colors are evenly spaced on the color wheel.



51.5829, 14.3783, 19.0375



51.5829, -22.0943, 15.9110



51.5829, -17.9082, -21.3880



51.5829, 19.9338, -15.0048

Rectangle

The Rectangle color scheme consists of four colors that form a rectangle on the color wheel.



51.5816, 14.3808, 19.0368



51.5829, -8.3321, 21.8310



51.5829, -17.9082, -21.3880



51.5829, 3.0694, -28.3023

Sweetspot

The Sweet Spot groups the original color and five complimentary colors.



51.5829, 14.3783, 19.0375



86.3079, 1.2399, 12.0617



46.4206, 37.4066, -11.4828



39.9439, 1.0597, 6.1302



97.7295, -5.2146, 5.3098



44.2712, -2.3622, 2.4053

Same Dimension

The Same Dimension uses a secret algorithm to generate beautiful new colors.



51.5829, 14.3783, 19.0375



64.2185, 25.9616, 28.4811



63.9789, -7.6072, 28.8096



31.6893, -0.3501, 3.4740



31.3032, 32.9211, 19.8652



7.1175, 4.1925, 4.4592

Inverse Universe

The Inverse Universe completely reimagines the original color for something new.



54.9926, -11.9874, -17.0112



69.6054, -16.3541, -29.1187



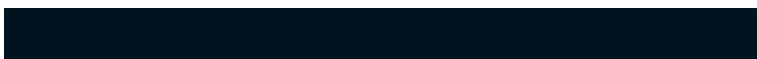
42.0926, 9.8525, -40.1119



32.0296, -2.9229, -0.0700



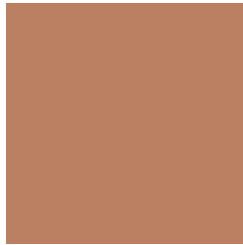
35.5743, -5.6970, -32.1667



7.8187, -2.2832, -4.8440

Previews

White Background



This preview shows how the HunterLab color 51.5816, 14.3808, 19.0368 looks on a white background.

Color Contrast Check

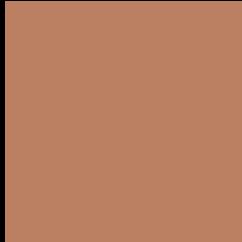
Large Text (above 18pt) WCAG AA ✓ Pass

Any Text WCAG AA × Fail

Large Text (above 18pt) WCAG AAA × Fail

Any Text WCAG AAA × Fail

Black Background



This preview shows how the HunterLab color 51.5816, 14.3808, 19.0368 looks on a black background.

Color Contrast Check

Large Text (above 18pt) WCAG AA ✓ Pass

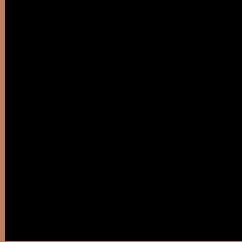
Any Text WCAG AA ✓ Pass

Large Text (above 18pt) WCAG AAA ✓ Pass

Any Text WCAG AAA × Fail

If you want to check with other color combinations, try the [Color Contrast Checker](#).

HunterLab 51.5816, 14.3808, 19.0368 Background



This preview shows how black text looks on a background with the HunterLab color 51.5816, 14.3808, 19.0368.



This preview shows how white text looks on a background with the HunterLab color 51.5816, 14.3808,

Color Blindness Simulation

Color vision deficiency is a very complex topic, and I could not describe the different causes any better than Wikipedia does, so if you want to learn more, you should check out their [article about color blindness](#).

Dichromacy



Original Color

51.5816, 14.3808, 19.0368

Protanopia

51.6763, -4.3483, 17.0440

Deuteranopia

51.5647, 3.5444, 19.3875



Tritanopia

51.5094, 21.9972, 6.9977

Trichromacy



Original Color

51.5816, 14.3808, 19.0368

Protanomaly

51.5240, 2.2292, 17.6202

Deuteranomaly

51.5530, 7.6556, 19.1736

Tritanomaly

51.5422, 18.9732, 12.0160

Monochromacy



Original Color

51.5816, 14.3808, 19.0368

Achromatopsia

52.0094, -2.7751, 2.8258

Achromatomaly

51.6399, 2.3097, 9.1979

CSS Examples

Text

The CSS property to change the color of the text to HunterLab 51.5816, 14.3808, 19.0368 is called "color". The color property can be set on classes, ids or directly on the HTML element.

This example shows how text in the color `rgb(187, 127, 97)` looks like.

```
.text, #text, p{  
    color:rgb(187, 127, 97)  
}
```

If you want to add a text shadow in that color use the text-shadow property, you can generate a text shadow directly with our [CSS Text Shadow Generator](#).

Here you see how black text with a 4 pixel rgb(187, 127, 97) colored shadow looks like.

```
.shadow{ text-shadow: 4px 4px 2px rgb(187, 127, 97) }
```

Border

The CSS property to change the border of an element to HunterLab 51.5816, 14.3808, 19.0368 is called "border". The border property can be set on classes, ids or directly on the HTML element.

This example shows the color as border, it can be applied via the CSS property "border" or "border-color".

```
.border, #border, table{ border:4px solid rgb(187, 127, 97) }
```


If only the border color should be changed use the property border-color.

```
.border{ border-color:rgb(187, 127, 97) }
```

If you want to add a box shadow in that color use:

Here you see how a box with a 4 pixel rgb(187, 127, 97) colored shadow looks like.

```
.boxshadow{ -moz-box-shadow:4px 4px 4px  
4px rgb(187, 127, 97); -webkit-box-  
shadow:4px 4px 4px 4px rgb(187, 127, 97);  
box-shadow:4px 4px 4px 4px rgb(187, 127,  
97) }
```

Background

The CSS property to change the background color of an element to HunterLab 51.5816, 14.3808, 19.0368 is called "background". The background property can be set on classes, ids or directly on the HTML element.

```
.background, #background, body{  
background: rgb(187, 127, 97) }
```

If only the background color should be changed can be used:

```
.background{ background-color: rgb(187,  
127, 97) }
```

This example shows the color as background, it is applied via the CSS property "background".

To optimize and compress your CSS code, you can use our [online CSS compressor and optimizer](#) based on csstidy. If you want to create a linear or radial gradient as background or border, check our [CSS Gradient Generator](#).

Hey! You found this booklet interesting? Support Converting Colors with the new Membership Option!

The pro membership hides all ads, plus gives you double the colors in the color bucket, and more awesome pro features!

[Learn more, Memberships starting at \\$2.50/m!](#)

**Follow me
on Twitter!**

@ConvertingColor