

Converting Colors

HunterLab(51.6736, 13.9162,
6.7895)

Have a look what the booklet for
HunterLab(51.6736, 13.9162,
6.7895) contains.

HunterLab(51.7118, 13.8025, 6.6640)	3
<i>Conversions</i>	4
<i>Details</i>	6
<i>Harmonies</i>	12
<i>Previews</i>	24
<i>Color Blindness Simulation</i>	28
<i>CSS Examples</i>	31

Color

**HunterLab(51.7118, 13.8025,
6.6640)**

Conversions

Conversions Part 1

Format	Color
Hex	B18185
RGB	177, 129, 133
RGB Percent	69%, 51%, 52%
CMY	0.3059, 0.4941, 0.4784
CMYK	0.00, 0.27, 0.25, 0.31
HSL	355°, 24%, 60%
HSV	355°, 27%, 69%
XYZ	30.2154, 26.7411, 25.7593
YIQ	143.8080, 27.3240, 11.4200

Conversions

Conversions Part 2

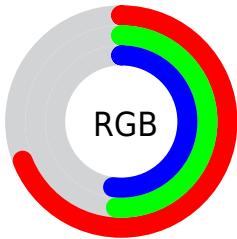
Format	Color
RYB	177, 129, 133
Decimal	11633029
CIELab	58.74, 19.11, 5.16
CIELCh	59, 19.797, 15.099
Yxy	26.7423, 0.3653, 0.3233
Android (android.graphics.Color)	4289823109 (0xFFB18185)
YUV	143.8080, -5.3283, 29.1094
Hunter-Lab	51.7118, 13.8025, 6.6640

Details

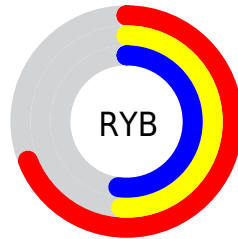
The HunterLab color **51.7118, 13.8025, 6.6640** is a light color, and the websafe version is hex **CC9999**. A complement of this color would be **62.5533, -17.2429, 0.7686**, and the grayscale version is **52.7474, -2.8145, 2.8659**.

A 20% lighter version of the original color is **73.7053, 14.3750, 8.2997**, and **32.3156, 12.8499, 4.7490** is the 20% darker color. If you saturate the color by 10%, you get **46.9698, 20.5895, 8.1466**, and if you desaturate by 10%, it is **56.8331, 7.2102, 5.3843**.

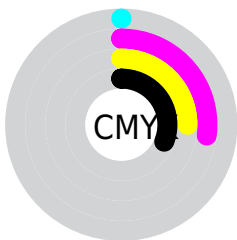
Distribution



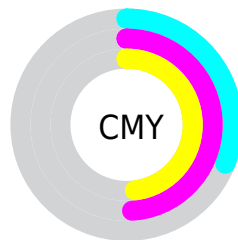
- Red (69%)
- Green (51%)
- Blue (52%)



- Red (69%)
- Yellow (51%)
- Blue (52%)



- Cyan (0%)
- Magenta (27%)
- Yellow (25%)
- Black (31%)



- Cyan (31%)
- Magenta (49%)
- Yellow (48%)

Brightness & Saturation Gradients

These gradients show how the HunterLab color 51.7118, 13.8025, 6.6640 changes by changing the brightness by 10 percent. The first figure shows a shift by +10% for each color and the second figure -10%.

Similar to the brightness gradients but the following saturation gradients show a change of the HunterLab color 51.7118, 13.8025, 6.6640 by changing the saturation by 10% instead.

■ 51.7118, 13.8025,
6.6640

■ 51.7118, 13.8025,
6.6640

169.2358, 14.7776,
15.0556

■ 41.6891, 13.3269,
5.8301

■ 73.8039, 14.4775,
8.3892

■ 32.4124, 12.7463,
5.0106

■ 85.7929, 14.6998,
9.2808

■ 23.9489, 12.0412,
4.2020

■ 98.3688, 14.8543,
10.1926

■ 16.3857, 11.1891,
3.3960

111.5054, 14.9466,
11.1247

■ 9.8465, 10.1659,
2.7234

125.1797, 14.9814,
12.0772

0.0000, INF, NaN

0.0000, NaN, NaN

139.3714, 14.9626,

13.0500

0.0000, NaN, NaN

154.0622, 14.8937,
14.0428

0.0000, NaN, NaN

■ 51.7118, 13.8025,
6.6640

■ 51.7118, 13.8025,
6.6640

■ 46.9698, 20.5895,
8.1466

■ 56.8331, 7.2102,
5.3843

■ 42.6769, 27.4798,
9.8344

■ 62.2706, 0.8498,
4.2859

■ 38.9205, 34.2654,
11.7043

■ 67.9780, -5.2850,
3.3467

■ 35.7945, 40.5927,
13.6830

■ 73.9176, -11.2146,
2.5435

■ 33.3852, 45.9663,
15.6341

■ 80.0595, -16.9656,
1.8557

■ 31.7449, 49.8602,
17.3697

■ 86.3797, -22.5649,
1.2654

■ 30.8325, 52.0351,
18.6888

■ 92.8587, -28.0372,
0.7576

■ 30.6283, 52.5620,
18.9372

■ 93.8548, -27.4220,
-2.4129

Harmonies

Analogous

The Analogous color harmony consists of three colors that are next to each other on the color wheel.



51.7130, 13.8167, -1.3005



51.7118, 13.8025, 6.6640



51.7130, 9.1588, 12.5713

Triad

The Triadic color harmony groups three colors that are evenly spaced from another and form a triangle on the color wheel.



51.7130, 13.8005, 6.6649



51.7130, -13.7284, 12.5414



51.7130, -6.8563, -14.3726

Complementary

The Complementary color scheme is a pair of colors which are on the opposite of each other on the color wheel.



51.7118, 13.8025, 6.6640



62.5533, -17.2429, 0.7686

Split Complementary

Split-complementary colors differ from the complementary color scheme. The scheme consists of three colors, the original color and two neighbors of the complement color.



51.7130, -13.6922, -9.3139



51.7118, 13.8025, 6.6640



51.7130, -17.4840, 6.6176

Square

The Square scheme is like the rectangle color scheme, but the four colors are evenly spaced on the color wheel.



51.7130, 13.8005, 6.6649



51.7130, -6.9086, 15.5766



51.7130, -17.4712, -1.3560



51.7130, 1.5194, -14.3544

Rectangle

The Rectangle color scheme consists of four colors that form a rectangle on the color wheel.



51.7118, 13.8025, 6.6640



51.7130, 4.2266, 14.9174



51.7130, -17.4712, -1.3560



51.7130, -9.3982, -13.1778

Sweetspot

The Sweet Spot groups the original color and five complimentary colors.



51.7130, 13.8005, 6.6649



82.5747, 1.9917, 5.8754



52.6881, 19.6645, -13.9967



37.9307, 1.5068, 2.8314



94.3401, -5.0338, 5.1257



41.3092, -2.2042, 2.2444

Same Dimension

The Same Dimension uses a secret algorithm to generate beautiful new colors.



51.7130, 13.8005, 6.6649



65.0497, 24.3018, 10.1661



56.9456, 3.2913, 13.5217



29.1828, 1.0689, 2.1581



26.0781, 44.7685, 16.0072



4.6662, 8.0908, 2.2422

Inverse Universe

The Inverse Universe completely reimagines the original color for something new.



51.7130, 13.8005, 6.6649



65.0497, 24.3018, 10.1661



56.5301, -7.2081, -8.9186



29.1828, 1.0689, 2.1581



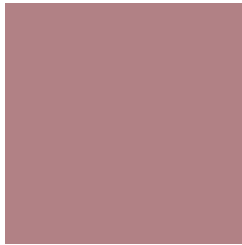
26.0781, 44.7685, 16.0072



4.6662, 8.0908, 2.2422

Previews

White Background



This preview shows how the HunterLab color 51.7118, 13.8025, 6.6640 looks on a white background.

Color Contrast Check

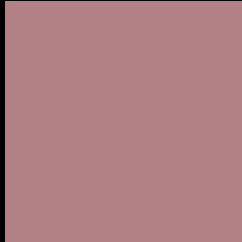
Large Text (above 18pt) WCAG AA ✓ Pass

Any Text WCAG AA ✗ Fail

Large Text (above 18pt) WCAG AAA ✗ Fail

Any Text WCAG AAA ✗ Fail

Black Background



This preview shows how the HunterLab color 51.7118, 13.8025, 6.6640 looks on a black background.

Color Contrast Check

Large Text (above 18pt) WCAG AA ✓ Pass

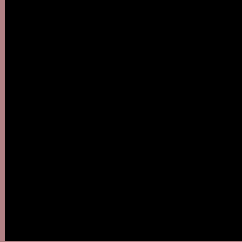
Any Text WCAG AA ✓ Pass

Large Text (above 18pt) WCAG AAA ✓ Pass

Any Text WCAG AAA × Fail

If you want to check with other color combinations, try the [Color Contrast Checker](#).

HunterLab 51.7118, 13.8025, 6.6640 Background



This preview shows how black text looks on a background with the HunterLab color 51.7118, 13.8025, 6.6640.



This preview shows how white text looks on a background with the HunterLab color 51.7118, 13.8025,

Color Blindness Simulation

Color vision deficiency is a very complex topic, and I could not describe the different causes any better than Wikipedia does, so if you want to learn more, you should check out their [article about color blindness](#).

Dichromacy



Original Color

51.7118, 13.8025, 6.6640

Protanopia

51.8387, -2.0160, 3.5302

Deuteranopia

51.8924, 3.4687, 7.0948



Tritanopia

51.7091, 15.3707, 4.5621

Trichromacy



Original Color

51.7118, 13.8025, 6.6640

Protanomaly

51.7353, 3.2113, 4.8123

Deuteranomaly

51.7911, 7.3020, 7.0507

Tritanomaly

51.6536, 15.0858, 5.3567

Monochromacy



Original Color

51.7118, 13.8025, 6.6640

Achromatopsia

52.8104, -2.8178, 2.8693

Achromatomaly

52.3704, 2.6849, 4.2283

CSS Examples

Text

The CSS property to change the color of the text to HunterLab 51.7118, 13.8025, 6.6640 is called "color". The color property can be set on classes, ids or directly on the HTML element.

This example shows how text in the color `rgb(177, 129, 133)` looks like.

```
.text, #text, p{  
    color:rgb(177, 129, 133)  
}
```

If you want to add a text shadow in that color use the text-shadow property, you can generate a text shadow directly with our [CSS Text Shadow Generator](#).

Here you see how black text with a 4 pixel rgb(177, 129, 133) colored shadow looks like.

```
.shadow{ text-shadow: 4px 4px 2px rgb(177, 129, 133) }
```

Border

The CSS property to change the border of an element to HunterLab 51.7118, 13.8025, 6.6640 is called "border". The border property can be set on classes, ids or directly on the HTML element.

This example shows the color as border, it can be applied via the CSS property "border" or "border-color".

```
.border, #border, table{ border:4px solid rgb(177, 129, 133) }
```


If only the border color should be changed use the property `border-color`.

```
.border{ border-color:rgb(177, 129, 133) }
```

If you want to add a box shadow in that color use:

Here you see how a box with a 4 pixel `rgb(177, 129, 133)` colored shadow looks like.

```
.boxshadow{ -moz-box-shadow:4px 4px 4px  
4px rgb(177, 129, 133); -webkit-box-  
shadow:4px 4px 4px 4px rgb(177, 129, 133);  
box-shadow:4px 4px 4px 4px rgb(177, 129,  
133) }
```

Background

The CSS property to change the background color of an element to HunterLab 51.7118, 13.8025, 6.6640 is called "background". The background property can be set on classes, ids or directly on the HTML element.

```
.background, #background, body{  
background: rgb(177, 129, 133) }
```

If only the background color should be changed can be used:

```
.background{ background-color: rgb(177,  
129, 133) }
```

This example shows the color as background, it is applied via the CSS property "background".

To optimize and compress your CSS code, you can use our [online CSS compressor and optimizer](#) based on csstidy. If you want to create a linear or radial gradient as background or border, check our [CSS Gradient Generator](#).

Hey! You found this booklet interesting? Support Converting Colors with the new Membership Option!

The pro membership hides all ads, plus gives you double the colors in the color bucket, and more awesome pro features!

[Learn more, Memberships starting at \\$2.50/m!](#)

**Follow me
on Twitter!**

@ConvertingColor