

Converting Colors

HunterLab(51.6817, 54.1459,
14.1650)

Have a look what the booklet for
HunterLab(51.6817, 54.1459,
14.1650) contains.

HunterLab(51.5312, 54.1818, 14.0401)	3
<i>Conversions</i>	4
<i>Details</i>	6
<i>Harmonies</i>	12
<i>Previews</i>	24
<i>Color Blindness Simulation</i>	28
<i>CSS Examples</i>	31

Color

**HunterLab(51.5312, 54.1818,
14.0401)**

Conversions

Conversions Part 1

Format	Color
Hex	ED5A73
RGB	237, 90, 115
RGB Percent	93%, 35%, 45%
CMY	0.0706, 0.6470, 0.5490
CMYK	0.00, 0.62, 0.51, 0.07
HSL	350°, 80%, 64%
HSV	350°, 62%, 93%
XYZ	41.6757, 26.5546, 19.1486
YIQ	136.8030, 79.5870, 38.9390

Conversions

Conversions Part 2

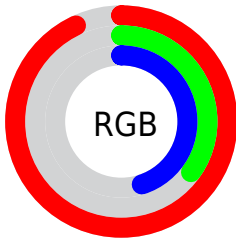
Format	Color
R _Y B	237, 90, 115
Decimal	15555187
CIE Lab	58.56, 58.47, 16.50
CIE LCh	59, 60.756, 15.758
Yxy	26.5561, 0.4769, 0.3039
Android (android.graphics.Color)	4293745267 (0xFFED5A73)
YUV	136.8030, -10.7489, 87.8728
Hunter-Lab	51.5312, 54.1818, 14.0401

Details

The HunterLab color **51.5312, 54.1818, 14.0401** is a dark color, and the websafe version is hex **FF6666**. The color can be described as middle muted rose. A complement of this color would be **82.1560, -42.9903, 4.9165**, and the grayscale version is **49.9583, -2.6656, 2.7143**.

A 20% lighter version of the original color is **66.7891, 39.4496, 9.3914**, and **32.2788, 50.2928, 11.0167** is the 20% darker color. If you saturate the color by 10%, you get **47.7172, 62.2803, 16.9433**, and if you desaturate by 10%, it is **56.3148, 44.9075, 11.4821**.

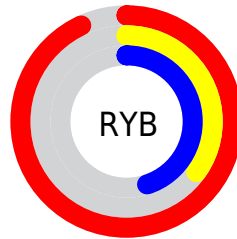
Distribution



Red (93%)

Green (35%)

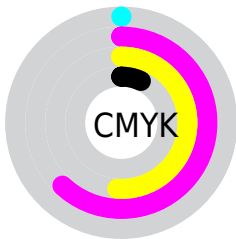
Blue (45%)



Red (93%)

Yellow (35%)

Blue (45%)

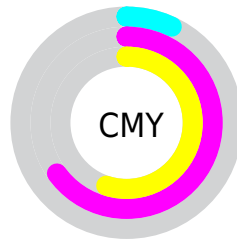


Cyan (0%)

Magenta (62%)

Yellow (51%)

Black (7%)



Cyan (7%)

Magenta (65%)

Yellow (55%)

Brightness & Saturation Gradients

These gradients show how the HunterLab color 51.5312, 54.1818, 14.0401 changes by changing the brightness by 10 percent. The first figure shows a shift by +10% for each color and the second figure -10%.

Similar to the brightness gradients but the following saturation gradients show a change of the HunterLab color 51.5312, 54.1818, 14.0401 by changing the saturation by 10% instead.

51.5312, 54.1818,
14.0401

51.5312, 54.1818,
14.0401

168.9679, 67.8755,
27.1428

41.5212, 52.1723,
12.5005

73.6008, 57.8889,
17.0216

32.2581, 50.0901,
10.9043

85.5793, 59.5898,
18.4819

23.8094, 47.9910,
9.2245

98.1452, 61.1914,
19.9313

16.2628, 46.0425,
7.4145

111.2723, 62.6983,
21.3744

9.7429, 44.7816,
6.8200

124.9375, 64.1154,
22.8146

0.0000, INF, NaN

139.1203, 65.4477,

0.0000, INF, NaN

24.2548

0.0000, NaN, NaN

153.8026, 66.6996,
25.6969

0.0000, NaN, NaN

■ 51.5312, 54.1818,
14.0401

■ 51.5312, 54.1818,
14.0401

■ 47.7172, 62.2803,
16.9433

■ 56.3148, 44.9075,
11.4821

■ 44.9678, 68.4457,
19.9736

■ 61.9328, 35.1203,
9.3673

■ 43.3042, 72.0730,
22.8250

■ 68.2559, 25.2488,
7.7114

■ 42.6142, 73.3423,
24.7128

■ 75.1686, 15.5317,
6.4804

■ 82.5752, 6.0752,
5.6207

■ 90.3990, -3.0918,
5.0763

■ 98.2837, -11.5090,
4.4552

■ 98.3588, -11.0930,
3.3851

Harmonies

Analogous

The Analogous color harmony consists of three colors that are next to each other on the color wheel.



51.5326, 54.6527, -10.2006



51.5312, 54.1818, 14.0401



51.5326, 36.6057, 26.4467

Triad

The Triadic color harmony groups three colors that are evenly spaced from another and form a triangle on the color wheel.



51.5326, 54.1777, 14.0412



51.5326, -33.6812, 26.0554



51.5326, -14.3924, -67.0551

Complementary

The Complementary color scheme is a pair of colors which are on the opposite of each other on the color wheel.



51.5312, 54.1818, 14.0401



82.1560, -42.9903, 4.9165

Split Complementary

Split-complementary colors differ from the complementary color scheme. The scheme consists of three colors, the original color and two neighbors of the complement color.



51.5326, -32.9848, -43.7191



51.5312, 54.1818, 14.0401



51.5326, -42.5446, 13.1123

Square

The Square scheme is like the rectangle color scheme, but the four colors are evenly spaced on the color wheel.



51.5326, 54.1777, 14.0412



51.5326, -15.5390, 30.6831



51.5326, -42.3177, -11.7194



51.5326, 11.4169, -66.3697

Rectangle

The Rectangle color scheme consists of four colors that form a rectangle on the color wheel.



51.5312, 54.1818, 14.0401



51.5326, 19.2276, 29.9423



51.5326, -42.3177, -11.7194



51.5326, -21.5719, -61.4010

Sweetspot

The Sweet Spot groups the original color and five complimentary colors.



51.5326, 54.1777, 14.0412



84.0020, 13.8179, 6.7275



52.0936, 64.8662, -57.9533



37.8169, 7.7723, 3.2540

0.0000, NaN, NaN



46.2646, -2.4686, 2.5136

Same Dimension

The Same Dimension uses a secret algorithm to generate beautiful new colors.



51.5326, 54.1777, 14.0412



51.0692, 69.4131, 19.1581



60.4220, 29.1321, 28.2481



38.8534, 1.7004, 2.5062



31.5081, 54.2689, 17.9540



8.8985, 15.4631, 4.0119

Inverse Universe

The Inverse Universe completely reimagines the original color for something new.



51.5326, 54.1777, 14.0412



51.0692, 69.4131, 19.1581



67.3140, -16.9934, -29.3888



38.8534, 1.7004, 2.5062



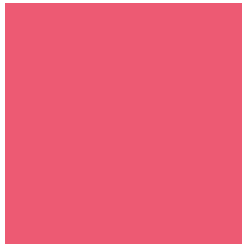
31.5081, 54.2689, 17.9540



8.8985, 15.4631, 4.0119

Previews

White Background



This preview shows how the HunterLab color 51.5312, 54.1818, 14.0401 looks on a white background.

Color Contrast Check

Large Text (above 18pt) WCAG AA ✓ Pass

Any Text WCAG AA × Fail

Large Text (above 18pt) WCAG AAA × Fail

Any Text WCAG AAA × Fail

Black Background



This preview shows how the HunterLab color 51.5312, 54.1818, 14.0401 looks on a black background.

Color Contrast Check

Large Text (above 18pt) WCAG AA ✓ Pass

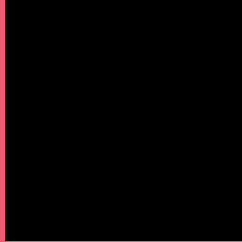
Any Text WCAG AA ✓ Pass

Large Text (above 18pt) WCAG AAA ✓ Pass

Any Text WCAG AAA × Fail

If you want to check with other color combinations, try the [Color Contrast Checker](#).

HunterLab 51.5312, 54.1818, 14.0401 Background



This preview shows how black text looks on a background with the HunterLab color 51.5312, 54.1818, 14.0401.



This preview shows how white text looks on a background with the HunterLab color 51.5312, 54.1818,

Color Blindness Simulation

Color vision deficiency is a very complex topic, and I could not describe the different causes any better than Wikipedia does, so if you want to learn more, you should check out their [article about color blindness](#).

Dichromacy



Original Color

51.5312, 54.1818, 14.0401

Protanopia

51.8673, -1.8599, 3.1222

Deuteranopia

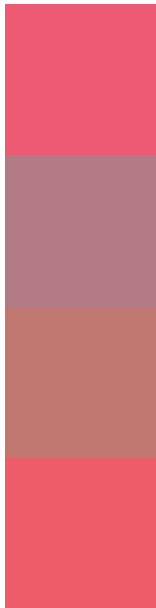
51.4953, 3.8093, 15.4630



Tritanopia

51.5387, 50.9709, 19.0705

Trichromacy



Original Color

51.5312, 54.1818, 14.0401

Protanomaly

50.0500, 17.5671, 5.2882

Deuteranomaly

50.5448, 21.7450, 13.8853

Tritanomaly

51.4850, 51.9419, 17.2435

Monochromacy



Original Color

51.5312, 54.1818, 14.0401

Achromatopsia

50.0158, -2.6687, 2.7175

Achromatomaly

48.8898, 16.3532, 5.2250

CSS Examples

Text

The CSS property to change the color of the text to HunterLab 51.5312, 54.1818, 14.0401 is called "color". The color property can be set on classes, ids or directly on the HTML element.

This example shows how text in the color `rgb(237, 90, 115)` looks like.

```
.text, #text, p{  
    color:rgb(237, 90, 115)  
}
```

If you want to add a text shadow in that color use the text-shadow property, you can generate a text shadow directly with our [CSS Text Shadow Generator](#).

Here you see how black text with a 4 pixel rgb(237, 90, 115) colored shadow looks like.

```
.shadow{ text-shadow: 4px 4px 2px rgb(237, 90, 115) }
```

Border

The CSS property to change the border of an element to HunterLab 51.5312, 54.1818, 14.0401 is called "border". The border property can be set on classes, ids or directly on the HTML element.

This example shows the color as border, it can be applied via the CSS property "border" or "border-color".

```
.border, #border, table{ border:4px solid rgb(237, 90, 115) }
```


If only the border color should be changed use the property `border-color`.

```
.border{ border-color:rgb(237, 90, 115) }
```

If you want to add a box shadow in that color use:

Here you see how a box with a 4 pixel `rgb(237, 90, 115)` colored shadow looks like.

```
.boxshadow{ -moz-box-shadow:4px 4px 4px  
4px rgb(237, 90, 115); -webkit-box-  
shadow:4px 4px 4px 4px rgb(237, 90, 115);  
box-shadow:4px 4px 4px 4px rgb(237, 90,  
115) }
```

Background

The CSS property to change the background color of an element to HunterLab 51.5312, 54.1818, 14.0401 is called "background". The background property can be set on classes, ids or directly on the HTML element.

```
.background, #background, body{  
background: rgb(237, 90, 115) }
```

If only the background color should be changed can be used:

```
.background{ background-color: rgb(237, 90,  
115) }
```

This example shows the color as background, it is applied via the CSS property "background".

To optimize and compress your CSS code, you can use our [online CSS compressor and optimizer](#) based on csstidy. If you want to create a linear or radial gradient as background or border, check our [CSS Gradient Generator](#).

Hey! You found this booklet interesting? Support Converting Colors with the new Membership Option!

The pro membership hides all ads, plus gives you double the colors in the color bucket, and more awesome pro features!

[Learn more, Memberships starting at \\$2.50/m!](#)

**Follow me
on Twitter!**

@ConvertingColor