

Converting Colors

HunterLab(51.7700, 46.5077,
7.9870)

Have a look what the booklet for
HunterLab(51.7700, 46.5077,
7.9870) contains.

HunterLab(51.7306, 46.4770, 8.0793)	3
<i>Conversions</i>	4
<i>Details</i>	6
<i>Harmonies</i>	12
<i>Previews</i>	24
<i>Color Blindness Simulation</i>	28
<i>CSS Examples</i>	31

Color

**HunterLab(51.7306, 46.4770,
8.0793)**

Conversions

Conversions Part 1

Format	Color
Hex	E16483
RGB	225, 100, 131
RGB Percent	88%, 39%, 51%
CMY	0.1176, 0.6078, 0.4863
CMYK	0.00, 0.56, 0.42, 0.12
HSL	345°, 68%, 64%
HSV	345°, 56%, 88%
XYZ	39.7052, 26.7605, 24.5453
YIQ	140.9090, 64.5490, 36.1410

Conversions

Conversions Part 2

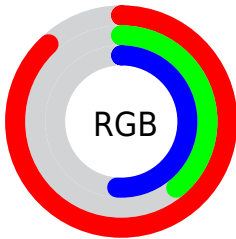
Format	Color
R_{YB}	225, 100, 131
Decimal	14771331
CIE _{Lab}	58.75, 51.56, 7.16
CIE _{LCh}	59, 52.056, 7.909
Yxy	26.7620, 0.4363, 0.2940
Android (android.graphics.Color)	4292961411 (0xFFE16483)
YUV	140.9090, -4.8851, 73.7478
Hunter-Lab	51.7306, 46.4770, 8.0793

Details

The HunterLab color **51.7306, 46.4770, 8.0793** is a light color, and the websafe version is hex **FF6699**. A complement of this color would be **77.7531, -39.8313, 8.2915**, and the grayscale version is **51.5754, -2.7519, 2.8022**.

A 20% lighter version of the original color is **69.3998, 37.0223, 4.6706**, and **32.5468, 42.7894, 6.2625** is the 20% darker color. If you saturate the color by 10%, you get **47.5429, 54.9004, 10.3740**, and if you desaturate by 10%, it is **56.7337, 37.3034, 6.3668**.

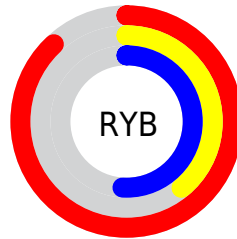
Distribution



Red (88%)

Green (39%)

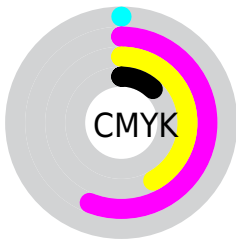
Blue (51%)



Red (88%)

Yellow (39%)

Blue (51%)

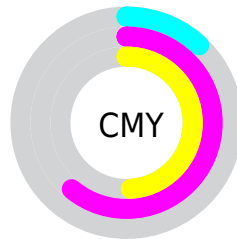


Cyan (0%)

Magenta (56%)

Yellow (42%)

Black (12%)



Cyan (12%)

Magenta (61%)

Yellow (49%)

Brightness & Saturation Gradients

These gradients show how the HunterLab color 51.7306, 46.4770, 8.0793 changes by changing the brightness by 10 percent. The first figure shows a shift by +10% for each color and the second figure -10%.

Similar to the brightness gradients but the following saturation gradients show a change of the HunterLab color 51.7306, 46.4770, 8.0793 by changing the saturation by 10% instead.

■ 51.7306, 46.4770,
8.0793

■ 51.7306, 46.4770,
8.0793

169.2639, 58.1627,
17.2733

■ 41.7067, 44.6780,
7.1273

■ 73.8252, 49.7349,
10.0167

■ 32.4287, 42.7800,
6.1782

■ 85.8153, 51.2067,
11.0048

■ 23.9636, 40.8118,
5.2252

■ 98.3923, 52.5799,
12.0080

■ 16.3986, 38.8763,
4.2535

■ 111.5299, 53.8603,
13.0273

■ 9.8574, 37.3239,
3.5660

125.2052, 55.0538,
14.0632

0.0000, INF, NaN

0.0000, INF, NaN

139.3978, 56.1656,

15.1161

0.0000, NaN, NaN

154.0895, 57.2004,
16.1860

0.0000, NaN, NaN

■ 51.7306, 46.4770,
8.0793

■ 51.7306, 46.4770,
8.0793

■ 47.5429, 54.9004,
10.3740

■ 56.7337, 37.3034,
6.3668

■ 44.2794, 61.9225,
13.1736

■ 62.4271, 27.8720,
5.2182

■ 42.0128, 66.8475,
16.2827

■ 68.7013, 18.4702,
4.5741

■ 40.7274, 69.2659,
19.3948

■ 75.4628, 9.2455,
4.3599

■ 40.3621, 69.8237,
20.6366

■ 82.6353, 0.2558,
4.5036

■ 90.1578, -8.4909,
4.9427

■ 97.1571, -15.7344,
4.6771

■ 97.3383, -14.7226,
2.0949

Harmonies

Analogous

The Analogous color harmony consists of three colors that are next to each other on the color wheel.



51.7320, 42.8482, -14.8312



51.7306, 46.4770, 8.0793



51.7320, 35.2596, 22.0192

Triad

The Triadic color harmony groups three colors that are evenly spaced from another and form a triangle on the color wheel.



51.7320, 46.4735, 8.0804



51.7320, -26.3910, 25.6497



51.7320, -17.8087, -50.4628

Complementary

The Complementary color scheme is a pair of colors which are on the opposite of each other on the color wheel.



51.7306, 46.4770, 8.0793



77.7531, -39.8313, 8.2915

Split Complementary

Split-complementary colors differ from the complementary color scheme. The scheme consists of three colors, the original color and two neighbors of the complement color.



51.7320, -32.2294, -28.7274



51.7306, 46.4770, 8.0793



51.7320, -36.5732, 15.8397

Square

The Square scheme is like the rectangle color scheme, but the four colors are evenly spaced on the color wheel.



51.7320, 46.4735, 8.0804



51.7320, -8.4874, 29.0007



51.7320, -38.5147, -3.0676



51.7320, 3.2215, -55.4385

Rectangle

The Rectangle color scheme consists of four colors that form a rectangle on the color wheel.



51.7306, 46.4770, 8.0793



51.7320, 21.8316, 26.7061



51.7320, -38.5147, -3.0676



51.7320, -23.4783, -44.5367

Sweetspot

The Sweet Spot groups the original color and five complimentary colors.



51.7320, 46.4735, 8.0804



85.7132, 12.3025, 5.0340



50.9789, 52.0106, -50.5239



38.9138, 6.6810, 2.3417

0.0000, NaN, NaN



46.2646, -2.4686, 2.5136

Same Dimension

The Same Dimension uses a secret algorithm to generate beautiful new colors.



51.7320, 46.4735, 8.0804



53.9848, 64.9690, 12.5326



57.6446, 27.6369, 23.6016



37.0891, 1.7309, 2.0494



30.6649, 53.0985, 15.2883



8.1606, 14.3010, 2.7486

Inverse Universe

The Inverse Universe completely reimagines the original color for something new.



51.7320, 46.4735, 8.0804



53.9848, 64.9690, 12.5326



68.2782, -19.9250, -20.1329



37.0891, 1.7309, 2.0494



30.6649, 53.0985, 15.2883



8.1606, 14.3010, 2.7486

Previews

White Background



This preview shows how the HunterLab color 51.7306, 46.4770, 8.0793 looks on a white background.

Color Contrast Check

Large Text (above 18pt) WCAG AA ✓ Pass

Any Text WCAG AA × Fail

Large Text (above 18pt) WCAG AAA × Fail

Any Text WCAG AAA × Fail

Black Background



This preview shows how the HunterLab color 51.7306, 46.4770, 8.0793 looks on a black background.

Color Contrast Check

Large Text (above 18pt) WCAG AA ✓ Pass

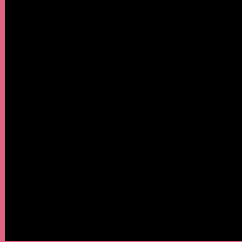
Any Text WCAG AA ✓ Pass

Large Text (above 18pt) WCAG AAA ✓ Pass

Any Text WCAG AAA × Fail

If you want to check with other color combinations, try the [Color Contrast Checker](#).

HunterLab 51.7306, 46.4770, 8.0793 Background



This preview shows how black text looks on a background with the HunterLab color 51.7306, 46.4770, 8.0793.



This preview shows how white text looks on a background with the HunterLab color 51.7306, 46.4770,

Color Blindness Simulation

Color vision deficiency is a very complex topic, and I could not describe the different causes any better than Wikipedia does, so if you want to learn more, you should check out their [article about color blindness](#).

Dichromacy



Original Color

51.7306, 46.4770, 8.0793

Protanopia

52.0054, -0.5943, -2.8191

Deuteranopia

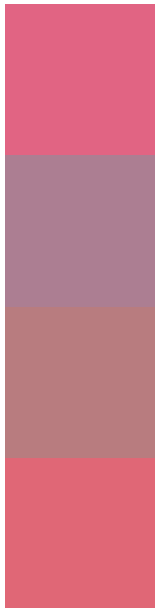
51.9125, 3.1793, 9.8845



Tritanopia

51.8610, 41.9628, 15.4979

Trichromacy



Original Color

51.7306, 46.4770, 8.0793

Protanomaly

50.7619, 15.4722, -0.2127

Deuteranomaly

51.1253, 18.0860, 8.5346

Tritanomaly

51.8226, 43.1641, 13.0792

Monochromacy



Original Color

51.7306, 46.4770, 8.0793

Achromatopsia

51.6097, -2.7538, 2.8041

Achromatomaly

50.4960, 14.1077, 3.5739

CSS Examples

Text

The CSS property to change the color of the text to HunterLab 51.7306, 46.4770, 8.0793 is called "color". The color property can be set on classes, ids or directly on the HTML element.

This example shows how text in the color `rgb(225, 100, 131)` looks like.

```
.text, #text, p{  
    color:rgb(225, 100, 131)  
}
```

If you want to add a text shadow in that color use the text-shadow property, you can generate a text shadow directly with our [CSS Text Shadow Generator](#).

Here you see how black text with a 4 pixel rgb(225, 100, 131) colored shadow looks like.

```
.shadow{ text-shadow: 4px 4px 2px rgb(225, 100, 131) }
```

Border

The CSS property to change the border of an element to HunterLab 51.7306, 46.4770, 8.0793 is called "border". The border property can be set on classes, ids or directly on the HTML element.

This example shows the color as border, it can be applied via the CSS property "border" or "border-color".

```
.border, #border, table{ border:4px solid rgb(225, 100, 131) }
```


If only the border color should be changed use the property `border-color`.

```
.border{ border-color:rgb(225, 100, 131) }
```

If you want to add a box shadow in that color use:

Here you see how a box with a 4 pixel `rgb(225, 100, 131)` colored shadow looks like.

```
.boxshadow{ -moz-box-shadow:4px 4px 4px  
4px rgb(225, 100, 131); -webkit-box-  
shadow:4px 4px 4px 4px rgb(225, 100, 131);  
box-shadow:4px 4px 4px 4px rgb(225, 100,  
131) }
```

Background

The CSS property to change the background color of an element to HunterLab 51.7306, 46.4770, 8.0793 is called "background". The background property can be set on classes, ids or directly on the HTML element.

```
.background, #background, body{  
background: rgb(225, 100, 131) }
```

If only the background color should be changed can be used:

```
.background{ background-color: rgb(225,  
100, 131) }
```

This example shows the color as background, it is applied via the CSS property "background".

To optimize and compress your CSS code, you can use our [online CSS compressor and optimizer](#) based on csstidy. If you want to create a linear or radial gradient as background or border, check our [CSS Gradient Generator](#).

Hey! You found this booklet interesting? Support Converting Colors with the new Membership Option!

The pro membership hides all ads, plus gives you double the colors in the color bucket, and more awesome pro features!

[Learn more, Memberships starting at \\$2.50/m!](#)

**Follow me
on Twitter!**

@ConvertingColor