

Converting Colors

HunterLab(51.7861, 14.2585,
11.3184)

Have a look what the booklet for
HunterLab(51.7861, 14.2585,
11.3184) contains.

HunterLab(51.7338, 14.5696, 11.4020)	3
<i>Conversions</i>	4
<i>Details</i>	6
<i>Harmonies</i>	12
<i>Previews</i>	24
<i>Color Blindness Simulation</i>	28
<i>CSS Examples</i>	31

Color

**HunterLab(51.7338, 14.5696,
11.4020)**

Conversions

Conversions Part 1

Format	Color
Hex	B68079
RGB	182, 128, 121
RGB Percent	71%, 50%, 47%
CMY	0.2863, 0.4980, 0.5255
CMYK	0.00, 0.30, 0.34, 0.29
HSL	7°, 29%, 59%
HSV	7°, 34%, 71%
XYZ	30.4617, 26.7639, 21.6495
YIQ	143.3480, 34.4310, 9.2710

Conversions

Conversions Part 2

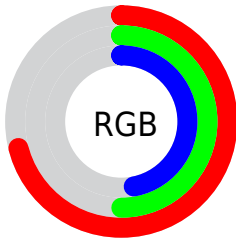
Format	Color
R_{YB}	182, 129, 121
Decimal	11960441
CIE _{Lab}	58.76, 19.95, 12.16
CIE _{LCh}	59, 23.360, 31.359
Yxy	26.7651, 0.3862, 0.3393
Android (android.graphics.Color)	4290150521 (0xFFB68079)
YUV	143.3480, -11.0176, 33.8978
Hunter-Lab	51.7338, 14.5696, 11.4020

Details

The HunterLab color **51.7338, 14.5696, 11.4020** is a dark color, and the websafe version is hex **CC9999**. A complement of this color would be **61.7259, -16.4712, -4.7626**, and the grayscale version is **52.5831, -2.8057, 2.8569**.

A 20% lighter version of the original color is **73.7669, 15.2801, 13.9460**, and **32.2935, 13.3890, 8.8773** is the 20% darker color. If you saturate the color by 10%, you get **47.4188, 20.5819, 13.6006**, and if you desaturate by 10%, it is **56.3883, 8.8130, 9.1365**.

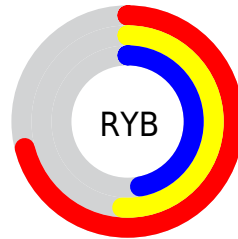
Distribution



Red (71%)

Green (50%)

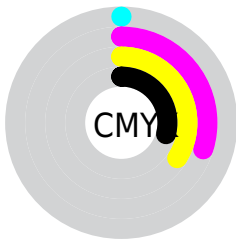
Blue (47%)



Red (71%)

Yellow (51%)

Blue (47%)

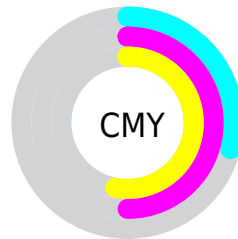


Cyan (0%)

Magenta (30%)

Yellow (34%)

Black (29%)



Cyan (29%)

Magenta (50%)

Yellow (53%)

Brightness & Saturation Gradients

These gradients show how the HunterLab color 51.7338, 14.5696, 11.4020 changes by changing the brightness by 10 percent. The first figure shows a shift by +10% for each color and the second figure -10%.

Similar to the brightness gradients but the following saturation gradients show a change of the HunterLab color 51.7338, 14.5696, 11.4020 by changing the saturation by 10% instead.

■ 51.7338, 14.5696,
11.4020

■ 51.7338, 14.5696,
11.4020

169.2685, 15.8446,
22.6511

■ 41.7096, 14.0536,
10.1428

■ 73.8287, 15.3197,
13.8860

■ 32.4313, 13.4309,
8.8563

■ 85.8190, 15.5775,
15.1220

■ 23.9659, 12.6818,
7.5251

■ 98.3961, 15.7662,
16.3597

■ 16.4007, 11.7843,
6.1175

111.5339, 15.8914,
17.6020

■ 9.8592, 10.7167,
5.6651

125.2093, 15.9581,
18.8509

0.0000, INF, NaN

0.0000, NaN, NaN

139.4021, 15.9703,

20.1080

0.0000, NaN, NaN

154.0939, 15.9314,
21.3744

0.0000, NaN, NaN

■ 51.7338, 14.5696,
11.4020

■ 51.7338, 14.5696,
11.4020

■ 47.4188, 20.5819,
13.6006

■ 56.3883, 8.8130,
9.1365

■ 43.4983, 26.7902,
15.6710

■ 61.3294, 3.3354,
6.8379

■ 40.0410, 33.0466,
17.5275

■ 66.5179, -1.8761,
4.5284

■ 37.1186, 39.0974,
19.0554

■ 71.9212, -6.8450,
2.2191

■ 34.7969, 44.5757,
20.1291

■ 77.5126, -11.5996,
-0.0847

■ 33.1197, 49.0530,
20.6556

■ 83.2705, -16.1683,
-2.3811

■ 32.3692, 51.2049,
20.8422

■ 89.1773, -20.5774,
-4.6704

■ 94.1728, -26.2421,
-1.9945

Harmonies

Analogous

The Analogous color harmony consists of three colors that are next to each other on the color wheel.



51.7350, 17.7371, 3.2450



51.7338, 14.5696, 11.4020



51.7350, 6.7081, 16.3527

Triad

The Triadic color harmony groups three colors that are evenly spaced from another and form a triangle on the color wheel.



51.7350, 14.5674, 11.4028



51.7350, -18.4734, 10.7858



51.7350, -2.3096, -18.8258

Complementary

The Complementary color scheme is a pair of colors which are on the opposite of each other on the color wheel.



51.7338, 14.5696, 11.4020



61.7259, -16.4712, -4.7626

Split Complementary

Split-complementary colors differ from the complementary color scheme. The scheme consists of three colors, the original color and two neighbors of the complement color.



51.7350, -11.5987, -15.7905



51.7338, 14.5696, 11.4020



51.7350, -20.4974, 2.3834

Square

The Square scheme is like the rectangle color scheme, but the four colors are evenly spaced on the color wheel.



51.7350, 14.5674, 11.4028



51.7350, -12.3273, 16.0465



51.7350, -18.0756, -7.5533



51.7350, 7.5504, -15.2139

Rectangle

The Rectangle color scheme consists of four colors that form a rectangle on the color wheel.



51.7338, 14.5696, 11.4020



51.7350, 0.1360, 17.7444



51.7350, -18.0756, -7.5533



51.7350, -5.6000, -18.5458

Sweetspot

The Sweet Spot groups the original color and five complimentary colors.



51.7350, 14.5674, 11.4028



84.8818, 2.1040, 8.1670



51.7210, 26.6755, -14.6885



39.4363, 1.4563, 4.0430



96.5975, -5.1542, 5.2483



43.2801, -2.3093, 2.3515

Same Dimension

The Same Dimension uses a secret algorithm to generate beautiful new colors.



51.7350, 14.5674, 11.4028



65.4477, 25.3816, 17.4860



59.7019, -0.1281, 18.8212



30.2884, 0.5391, 2.8036



27.2969, 42.7163, 17.5680



5.6347, 6.4607, 3.5852

Inverse Universe

The Inverse Universe completely reimagines the original color for something new.



61.7259, -16.4712, -4.7626



81.5064, -24.8579, -8.5769



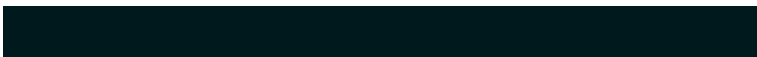
52.7407, -2.5551, -17.2978



31.6698, -3.7022, 0.5800



45.2473, -19.9814, -13.4212



8.7867, -4.1185, -2.0920

Previews

White Background



This preview shows how the HunterLab color 51.7338, 14.5696, 11.4020 looks on a white background.

Color Contrast Check

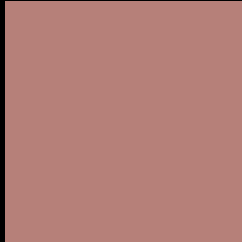
Large Text (above 18pt) WCAG AA ✓ Pass

Any Text WCAG AA × Fail

Large Text (above 18pt) WCAG AAA × Fail

Any Text WCAG AAA × Fail

Black Background



This preview shows how the HunterLab color 51.7338, 14.5696, 11.4020 looks on a black background.

Color Contrast Check

Large Text (above 18pt) WCAG AA ✓ Pass

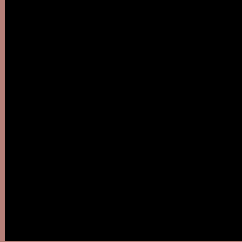
Any Text WCAG AA ✓ Pass

Large Text (above 18pt) WCAG AAA ✓ Pass

Any Text WCAG AAA × Fail

If you want to check with other color combinations, try the [Color Contrast Checker](#).

HunterLab 51.7338, 14.5696, 11.4020 Background



This preview shows how black text looks on a background with the HunterLab color 51.7338, 14.5696, 11.4020.



This preview shows how white text looks on a background with the HunterLab color 51.7338, 14.5696, 11.4020.

Color Blindness Simulation

Color vision deficiency is a very complex topic, and I could not describe the different causes any better than Wikipedia does, so if you want to learn more, you should check out their [article about color blindness](#).

Dichromacy



Original Color

51.7338, 14.5696, 11.4020

Protanopia

51.7796, -2.8675, 8.4720

Deuteranopia

51.6979, 3.5753, 11.9028



Tritanopia

51.7090, 17.7726, 5.8918

Trichromacy



Original Color

51.7338, 14.5696, 11.4020

Protanomaly

51.5389, 3.3294, 9.4963

Deuteranomaly

51.6499, 7.6071, 11.5619

Tritanomaly

51.8244, 16.5877, 8.0630

Monochromacy



Original Color

51.7338, 14.5696, 11.4020

Achromatopsia

52.4097, -2.7964, 2.8475

Achromatomaly

52.0522, 2.7544, 6.0137

CSS Examples

Text

The CSS property to change the color of the text to HunterLab 51.7338, 14.5696, 11.4020 is called "color". The color property can be set on classes, ids or directly on the HTML element.

This example shows how text in the color `rgb(182, 128, 121)` looks like.

```
.text, #text, p{  
    color:rgb(182, 128, 121)  
}
```

If you want to add a text shadow in that color use the text-shadow property, you can generate a text shadow directly with our [CSS Text Shadow Generator](#).

Here you see how black text with a 4 pixel rgb(182, 128, 121) colored shadow looks like.

```
.shadow{ text-shadow: 4px 4px 2px rgb(182, 128, 121) }
```

Border

The CSS property to change the border of an element to HunterLab 51.7338, 14.5696, 11.4020 is called "border". The border property can be set on classes, ids or directly on the HTML element.

This example shows the color as border, it can be applied via the CSS property "border" or "border-color".

```
.border, #border, table{ border:4px solid rgb(182, 128, 121) }
```


If only the border color should be changed use the property `border-color`.

```
.border{ border-color:rgb(182, 128, 121) }
```

If you want to add a box shadow in that color use:

Here you see how a box with a 4 pixel `rgb(182, 128, 121)` colored shadow looks like.

```
.boxshadow{ -moz-box-shadow:4px 4px 4px  
4px rgb(182, 128, 121); -webkit-box-  
shadow:4px 4px 4px 4px rgb(182, 128, 121);  
box-shadow:4px 4px 4px 4px rgb(182, 128,  
121) }
```

Background

The CSS property to change the background color of an element to HunterLab 51.7338, 14.5696, 11.4020 is called "background". The background property can be set on classes, ids or directly on the HTML element.

```
.background, #background, body{  
background: rgb(182, 128, 121) }
```

If only the background color should be changed can be used:

```
.background{ background-color: rgb(182,  
128, 121) }
```

This example shows the color as background, it is applied via the CSS property "background".

To optimize and compress your CSS code, you can use our [online CSS compressor and optimizer](#) based on csstidy. If you want to create a linear or radial gradient as background or border, check our [CSS Gradient Generator](#).

Hey! You found this booklet interesting? Support Converting Colors with the new Membership Option!

The pro membership hides all ads, plus gives you double the colors in the color bucket, and more awesome pro features!

[Learn more, Memberships starting at \\$2.50/m!](#)

**Follow me
on Twitter!**

@ConvertingColor