

Converting Colors

HunterLab(51.8070, 8.3420,
20.7293)

Have a look what the booklet for
HunterLab(51.8070, 8.3420,
20.7293) contains.

HunterLab(51.8088, 8.3196, 20.7433)	3
<i>Conversions</i>	4
<i>Details</i>	6
<i>Harmonies</i>	12
<i>Previews</i>	24
<i>Color Blindness Simulation</i>	28
<i>CSS Examples</i>	31

Color

**HunterLab(51.8088, 8.3196,
20.7433)**

Conversions

Conversions Part 1

Format	Color
Hex	B3845B
RGB	179, 132, 91
RGB Percent	70%, 52%, 36%
CMY	0.2980, 0.4823, 0.6431
CMYK	0.00, 0.26, 0.49, 0.30
HSL	28°, 37%, 53%
HSV	28°, 49%, 70%
XYZ	28.7299, 26.8415, 13.5642
YIQ	141.3790, 41.1730, -2.7870

Conversions

Conversions Part 2

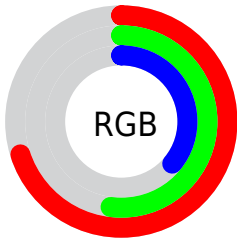
Format	Color
R_{YB}	179, 168, 91
Decimal	11764827
CIE _{Lab}	58.83, 13.02, 29.13
CIE _{LCh}	59, 31.906, 65.907
Yxy	26.8428, 0.4156, 0.3882
Android (android.graphics.Color)	4289954907 (0xFFB3845B)
YUV	141.3790, -24.8368, 32.9936
Hunter-Lab	51.8088, 8.3196, 20.7433

Details

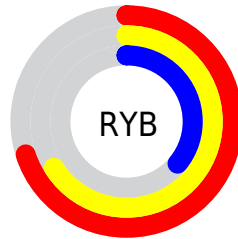
The HunterLab color **51.8088, 8.3196, 20.7433** is a dark color, and the websafe version is hex **CC9966**. A complement of this color would be **48.6361, -6.0624, -22.1265**, and the grayscale version is **51.8466, -2.7664, 2.8169**.

A 20% lighter version of the original color is **73.9293, 8.6262, 25.1822**, and **32.4061, 8.1989, 15.7523** is the 20% darker color. If you saturate the color by 10%, you get **49.0864, 11.5942, 22.8149**, and if you desaturate by 10%, it is **54.6829, 5.3459, 18.1322**.

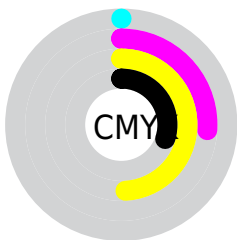
Distribution



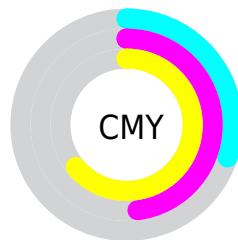
- Red (70%)
- Green (52%)
- Blue (36%)



- Red (70%)
- Yellow (66%)
- Blue (36%)



- Cyan (0%)
- Magenta (26%)
- Yellow (49%)
- Black (30%)



- Cyan (30%)
- Magenta (48%)
- Yellow (64%)

Brightness & Saturation Gradients

These gradients show how the HunterLab color 51.8088, 8.3196, 20.7433 changes by changing the brightness by 10 percent. The first figure shows a shift by +10% for each color and the second figure -10%.

Similar to the brightness gradients but the following saturation gradients show a change of the HunterLab color 51.8088, 8.3196, 20.7433 by changing the saturation by 10% instead.

■ 51.8088, 8.3196,
20.7433

■ 51.8088, 8.3196,
20.7433

169.3798, 7.0492,
39.5127

■ 41.7794, 8.1493,
18.3421

■ 73.9132, 8.4259,
25.2515

■ 32.4955, 7.8912,
15.7987

■ 85.9078, 8.3822,
27.3997

■ 24.0240, 7.5271,
13.0639

■ 98.4890, 8.2811,
29.4971

■ 16.4519, 7.0347,
10.6757

■ 111.6308, 8.1270,
31.5538

■ 9.9024, 6.3818,
6.9317

125.3100, 7.9238,
33.5780

0.0000, INF, NaN

0.0000, NaN, NaN

139.5065, 7.6747,

35.5759

0.0000, NaN, NaN

154.2019, 7.3823,
37.5527

0.0000, NaN, NaN

■ 51.8088, 8.3196,
20.7433

■ 51.8088, 8.3196,
20.7433

■ 49.0864, 11.5942,
22.8149

■ 54.6829, 5.3459,
18.1322

■ 46.5256, 15.1750,
24.2961

■ 57.6921, 2.6716,
15.0313

■ 44.1415, 19.0427,
25.1488

■ 60.8258, 0.2796,
11.4914

■ 41.9478, 23.1583,
25.3570

■ 64.0734, -1.8482,
7.5590

■ 39.9499, 27.4253,
25.0331

■ 67.4254, -3.7315,
3.2761

■ 39.7901, 27.7806,
25.0048

■ 70.8731, -5.3901,
-1.3202

■ 74.4091, -6.8431,
-6.1973

■ 78.0267, -8.1085,
-11.3269

■ 81.7198, -9.2032,
-16.6844

Harmonies

Analogous

The Analogous color harmony consists of three colors that are next to each other on the color wheel.



51.8101, 20.0997, 15.3647



51.8088, 8.3196, 20.7433



51.8101, -5.4247, 21.9293

Triad

The Triadic color harmony groups three colors that are evenly spaced from another and form a triangle on the color wheel.



51.8101, 8.3173, 20.7440



51.8101, -26.2453, 0.2007



51.8101, 13.4363, -21.5740

Complementary

The Complementary color scheme is a pair of colors which are on the opposite of each other on the color wheel.



51.8088, 8.3196, 20.7433



48.6361, -6.0624, -22.1265

Split Complementary

Split-complementary colors differ from the complementary color scheme. The scheme consists of three colors, the original color and two neighbors of the complement color.



51.8101, -0.0551, -28.4327



51.8088, 8.3196, 20.7433



51.8101, -22.2483, -13.9460

Square

The Square scheme is like the rectangle color scheme, but the four colors are evenly spaced on the color wheel.



51.8101, 8.3173, 20.7440



51.8101, -24.4950, 11.9617



51.8101, -12.9917, -25.3321



51.8101, 23.2615, -8.3667

Rectangle

The Rectangle color scheme consists of four colors that form a rectangle on the color wheel.



51.8088, 8.3196, 20.7433



51.8101, -13.6791, 20.5440



51.8101, -12.9917, -25.3321



51.8101, 9.1298, -24.8345

Sweetspot

The Sweet Spot groups the original color and five complimentary colors.



51.8101, 8.3173, 20.7440



83.0827, -0.7792, 13.3814



43.5222, 34.6588, -6.0598



38.6830, -0.0804, 6.8045



95.4677, -5.0939, 5.1869



42.2927, -2.2566, 2.2978

Same Dimension

The Same Dimension uses a secret algorithm to generate beautiful new colors.



51.8101, 8.3173, 20.7440



65.3963, 15.9011, 30.7293



63.9088, -12.0426, 29.9870



30.2262, -0.8576, 3.5995



33.6392, 22.8947, 21.1291



6.8788, 2.0627, 4.2748

Inverse Universe

The Inverse Universe completely reimagines the original color for something new.



48.6361, -6.0624, -22.1265



60.3070, -6.8070, -38.0514



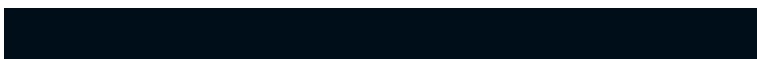
37.0618, 14.9939, -45.1263



29.9274, -2.2411, -0.4313



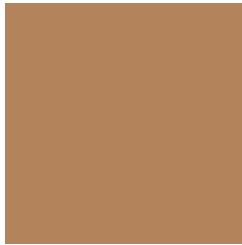
28.7934, 3.8254, -44.2472



6.1341, -1.0483, -5.4040

Previews

White Background



This preview shows how the HunterLab color 51.8088, 8.3196, 20.7433 looks on a white background.

Color Contrast Check

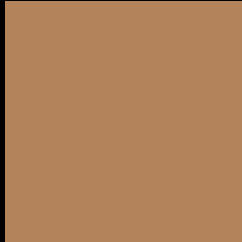
Large Text (above 18pt) WCAG AA ✓ Pass

Any Text WCAG AA × Fail

Large Text (above 18pt) WCAG AAA × Fail

Any Text WCAG AAA × Fail

Black Background



This preview shows how the HunterLab color 51.8088, 8.3196, 20.7433 looks on a black background.

Color Contrast Check

Large Text (above 18pt) WCAG AA ✓ Pass

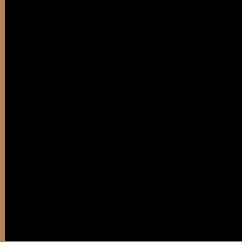
Any Text WCAG AA ✓ Pass

Large Text (above 18pt) WCAG AAA ✓ Pass

Any Text WCAG AAA × Fail

If you want to check with other color combinations, try the [Color Contrast Checker](#).

HunterLab 51.8088, 8.3196, 20.7433 Background



This preview shows how black text looks on a background with the HunterLab color 51.8088, 8.3196, 20.7433.



This preview shows how white text looks on a background with the HunterLab color 51.8088, 8.3196,

Color Blindness Simulation

Color vision deficiency is a very complex topic, and I could not describe the different causes any better than Wikipedia does, so if you want to learn more, you should check out their [article about color blindness](#).

Dichromacy



Original Color

51.8088, 8.3196, 20.7433

Protanopia

52.0022, -4.9670, 19.6128

Deuteranopia

51.9658, 3.3294, 21.0432



Tritanopia

51.7364, 17.9116, 5.5000

Trichromacy



Original Color

51.8088, 8.3196, 20.7433

Protanomaly

51.7413, -0.1159, 19.7461

Deuteranomaly

52.0238, 4.9095, 21.1189

Tritanomaly

51.7102, 14.4482, 11.7426

Monochromacy



Original Color

51.8088, 8.3196, 20.7433

Achromatopsia

51.6097, -2.7538, 2.8041

Achromatomaly

51.5515, 0.4387, 10.2217

CSS Examples

Text

The CSS property to change the color of the text to HunterLab 51.8088, 8.3196, 20.7433 is called "color". The color property can be set on classes, ids or directly on the HTML element.

This example shows how text in the color `rgb(179, 132, 91)` looks like.

```
.text, #text, p{  
    color:rgb(179, 132, 91)  
}
```

If you want to add a text shadow in that color use the text-shadow property, you can generate a text shadow directly with our [CSS Text Shadow Generator](#).

Here you see how black text with a 4 pixel rgb(179, 132, 91) colored shadow looks like.

```
.shadow{ text-shadow: 4px 4px 2px rgb(179, 132, 91) }
```

Border

The CSS property to change the border of an element to HunterLab 51.8088, 8.3196, 20.7433 is called "border". The border property can be set on classes, ids or directly on the HTML element.

This example shows the color as border, it can be applied via the CSS property "border" or "border-color".

```
.border, #border, table{ border:4px solid rgb(179, 132, 91) }
```


If only the border color should be changed use the property `border-color`.

```
.border{ border-color:rgb(179, 132, 91) }
```

If you want to add a box shadow in that color use:

Here you see how a box with a 4 pixel `rgb(179, 132, 91)` colored shadow looks like.

```
.boxshadow{ -moz-box-shadow:4px 4px 4px  
4px rgb(179, 132, 91); -webkit-box-  
shadow:4px 4px 4px 4px rgb(179, 132, 91);  
box-shadow:4px 4px 4px 4px rgb(179, 132,  
91) }
```

Background

The CSS property to change the background color of an element to HunterLab 51.8088, 8.3196, 20.7433 is called "background". The background property can be set on classes, ids or directly on the HTML element.

```
.background, #background, body{  
background: rgb(179, 132, 91) }
```

If only the background color should be changed can be used:

```
.background{ background-color: rgb(179,  
132, 91) }
```

This example shows the color as background, it is applied via the CSS property "background".

To optimize and compress your CSS code, you can use our [online CSS compressor and optimizer](#) based on csstidy. If you want to create a linear or radial gradient as background or border, check our [CSS Gradient Generator](#).

Hey! You found this booklet interesting? Support Converting Colors with the new Membership Option!

The pro membership hides all ads, plus gives you double the colors in the color bucket, and more awesome pro features!

[Learn more, Memberships starting at \\$2.50/m!](#)

**Follow me
on Twitter!**

@ConvertingColor