

Converting Colors

HunterLab(51.8674, 5.4363,
13.3810)

Have a look what the booklet for
HunterLab(51.8674, 5.4363,
13.3810) contains.

HunterLab(51.8561, 5.3135, 13.5017)	3
<i>Conversions</i>	4
<i>Details</i>	6
<i>Harmonies</i>	12
<i>Previews</i>	24
<i>Color Blindness Simulation</i>	28
<i>CSS Examples</i>	31

Color

**HunterLab(51.8561, 5.3135,
13.5017)**

Conversions

Conversions Part 1

Format	Color
Hex	A88773
RGB	168, 135, 115
RGB Percent	66%, 53%, 45%
CMY	0.3412, 0.4706, 0.5490
CMYK	0.00, 0.20, 0.32, 0.34
HSL	23°, 23%, 55%
HSV	23°, 32%, 66%
XYZ	27.9069, 26.8906, 19.9392
YIQ	142.5870, 26.0880, 0.7760

Conversions

Conversions Part 2

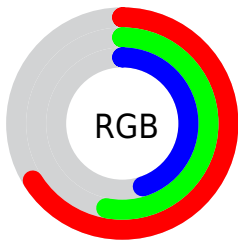
Format	Color
R_{YB}	168, 147, 115
Decimal	11044723
CIE _{Lab}	58.87, 9.59, 15.52
CIE _{LCh}	59, 18.244, 58.275
Yxy	26.8918, 0.3734, 0.3598
Android (android.graphics.Color)	4289234803 (0xFFA88773)
YUV	142.5870, -13.6004, 22.2872
Hunter-Lab	51.8561, 5.3135, 13.5017

Details

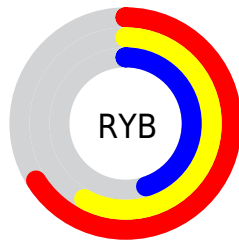
The HunterLab color **51.8561, 5.3135, 13.5017** is a dark color, and the websafe version is hex **CC9999**. A complement of this color would be **52.5841, -8.0826, -9.5096**, and the grayscale version is **52.2906, -2.7901, 2.8410**.

A 20% lighter version of the original color is **73.8944, 5.2314, 16.2912**, and **32.4763, 5.4500, 10.4126** is the 20% darker color. If you saturate the color by 10%, you get **48.7471, 8.5755, 16.0728**, and if you desaturate by 10%, it is **55.1163, 2.3113, 10.5967**.

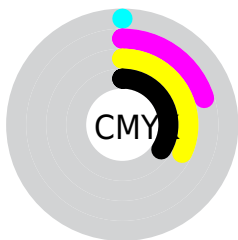
Distribution



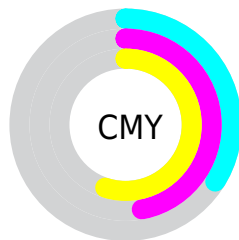
- Red (66%)
- Green (53%)
- Blue (45%)



- Red (66%)
- Yellow (58%)
- Blue (45%)



- Cyan (0%)
- Magenta (20%)
- Yellow (32%)
- Black (34%)



- Cyan (34%)
- Magenta (47%)
- Yellow (55%)

Brightness & Saturation Gradients

These gradients show how the HunterLab color 51.8561, 5.3135, 13.5017 changes by changing the brightness by 10 percent. The first figure shows a shift by +10% for each color and the second figure -10%.

Similar to the brightness gradients but the following saturation gradients show a change of the HunterLab color 51.8561, 5.3135, 13.5017 by changing the saturation by 10% instead.

■ 51.8561, 5.3135,
13.5017

■ 51.8561, 5.3135,
13.5017

169.4500, 2.7499,
26.1785

■ 41.8234, 5.3227,
12.0273

■ 73.9663, 5.0899,
16.3676

■ 32.5359, 5.2550,
10.5039

■ 85.9637, 4.8925,
17.7763

■ 24.0606, 5.0950,
8.9067

■ 98.5476, 4.6441,
19.1770

■ 16.4841, 4.8231,
7.1931

111.6918, 4.3484,
20.5741

■ 9.9296, 4.4085,
6.9507

125.3735, 4.0086,
21.9706

0.0000, INF, NaN

0.0000, NaN, NaN

139.5722, 3.6274,

23.3690

0.0000, NaN, NaN

154.2698, 3.2072,
24.7711

0.0000, NaN, NaN

■ 51.8561, 5.3135,
13.5017

■ 51.8561, 5.3135,
13.5017

■ 48.7471, 8.5755,
16.0728

■ 55.1163, 2.3113,
10.5967

■ 45.8028, 12.1130,
18.2563

■ 58.5090, -0.4419,
7.4009

■ 43.0436, 15.9230,
19.9966

■ 62.0223, -2.9672,
3.9535

■ 40.4904, 19.9866,
21.2367

■ 65.6446, -5.2852,
0.2871

■ 38.1650, 24.2584,
21.9278

■ 69.3662, -7.4155,
-3.5712

■ 36.0888, 28.6574,
22.0451

■ 73.1785, -9.3769,
-7.5987

■ 34.5328, 32.3439,
21.8452

■ 77.0739, -11.1867,
-11.7767

■ 81.0462, -12.8605,
-16.0892

■ 84.6520, -16.8663,
-14.3960

Harmonies

Analogous

The Analogous color harmony consists of three colors that are next to each other on the color wheel.



51.8573, 11.0356, 9.1063



51.8561, 5.3135, 13.5017



51.8573, -2.3200, 15.1001

Triad

The Triadic color harmony groups three colors that are evenly spaced from another and form a triangle on the color wheel.



51.8573, 5.3116, 13.5024



51.8573, -16.8568, 3.2481



51.8573, 4.4892, -11.2976

Complementary

The Complementary color scheme is a pair of colors which are on the opposite of each other on the color wheel.



51.8561, 5.3135, 13.5017



52.5841, -8.0826, -9.5096

Split Complementary

Split-complementary colors differ from the complementary color scheme. The scheme consists of three colors, the original color and two neighbors of the complement color.



51.8573, -3.2180, -13.4628



51.8561, 5.3135, 13.5017



51.8573, -15.2667, -4.3611

Square

The Square scheme is like the rectangle color scheme, but the four colors are evenly spaced on the color wheel.



51.8573, 5.3116, 13.5024



51.8573, -14.8605, 9.7453



51.8573, -10.3846, -10.7595



51.8573, 10.5415, -5.2091

Rectangle

The Rectangle color scheme consists of four colors that form a rectangle on the color wheel.



51.8561, 5.3135, 13.5017



51.8573, -7.3662, 14.5726



51.8573, -10.3846, -10.7595



51.8573, 1.9926, -12.5444

Sweetspot

The Sweet Spot groups the original color and five complimentary colors.



51.8573, 5.3116, 13.5024



79.9299, -1.4323, 8.8925



47.6893, 20.1107, -5.3876



37.0096, -0.4397, 4.4485



92.0917, -4.9138, 5.0035



39.3538, -2.0998, 2.1382

Same Dimension

The Same Dimension uses a secret algorithm to generate beautiful new colors.



51.8573, 5.3116, 13.5024



66.8388, 10.2618, 20.7147



59.1855, -7.1359, 20.0963



28.2648, -0.4919, 3.1665



30.1623, 27.7018, 19.0708



5.6577, 2.0965, 3.5229

Inverse Universe

The Inverse Universe completely reimagines the original color for something new.



52.5841, -8.0826, -9.5096



68.0170, -11.6303, -16.8916



45.1749, 4.3406, -20.7084



28.3709, -2.4235, -0.1532



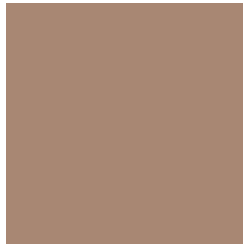
31.3096, -2.5047, -33.7273



5.7636, -1.7249, -3.4804

Previews

White Background



This preview shows how the HunterLab color 51.8561, 5.3135, 13.5017 looks on a white background.

Color Contrast Check

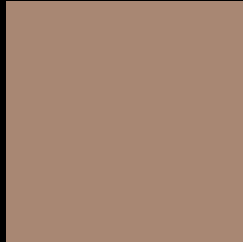
Large Text (above 18pt) WCAG AA ✓ Pass

Any Text WCAG AA × Fail

Large Text (above 18pt) WCAG AAA × Fail

Any Text WCAG AAA × Fail

Black Background



This preview shows how the HunterLab color 51.8561, 5.3135, 13.5017 looks on a black background.

Color Contrast Check

Large Text (above 18pt) WCAG AA ✓ Pass

Any Text WCAG AA ✓ Pass

Large Text (above 18pt) WCAG AAA ✓ Pass

Any Text WCAG AAA × Fail

If you want to check with other color combinations, try the [Color Contrast Checker](#).

HunterLab 51.8561, 5.3135, 13.5017 Background



This preview shows how black text looks on a background with the HunterLab color 51.8561, 5.3135, 13.5017.



This preview shows how white text looks on a background with the HunterLab color 51.8561, 5.3135,

Color Blindness Simulation

Color vision deficiency is a very complex topic, and I could not describe the different causes any better than Wikipedia does, so if you want to learn more, you should check out their [article about color blindness](#).

Dichromacy



Original Color

51.8561, 5.3135, 13.5017

Protanopia

52.0942, -3.7185, 12.5281

Deuteranopia

51.8126, 3.7781, 13.4324



Tritanopia

51.7819, 11.8263, 3.2617

Trichromacy



Original Color

51.8561, 5.3135, 13.5017

Protanomaly

51.8823, -0.1437, 12.7345

Deuteranomaly

51.9164, 4.1256, 13.5396

Tritanomaly

51.6861, 9.6802, 6.9769

Monochromacy



Original Color

51.8561, 5.3135, 13.5017

Achromatopsia

52.4097, -2.7964, 2.8475

Achromatomaly

52.0817, -0.1115, 6.8290

CSS Examples

Text

The CSS property to change the color of the text to HunterLab 51.8561, 5.3135, 13.5017 is called "color". The color property can be set on classes, ids or directly on the HTML element.

This example shows how text in the color `rgb(168, 135, 115)` looks like.

```
.text, #text, p{  
    color:rgb(168, 135, 115)  
}
```

If you want to add a text shadow in that color use the text-shadow property, you can generate a text shadow directly with our [CSS Text Shadow Generator](#).

Here you see how black text with a 4 pixel rgb(168, 135, 115) colored shadow looks like.

```
.shadow{ text-shadow: 4px 4px 2px rgb(168, 135, 115) }
```

Border

The CSS property to change the border of an element to HunterLab 51.8561, 5.3135, 13.5017 is called "border". The border property can be set on classes, ids or directly on the HTML element.

This example shows the color as border, it can be applied via the CSS property "border" or "border-color".

```
.border, #border, table{ border:4px solid rgb(168, 135, 115) }
```


If only the border color should be changed use the property `border-color`.

```
.border{ border-color:rgb(168, 135, 115) }
```

If you want to add a box shadow in that color use:

Here you see how a box with a 4 pixel `rgb(168, 135, 115)` colored shadow looks like.

```
.boxshadow{ -moz-box-shadow:4px 4px 4px  
4px rgb(168, 135, 115); -webkit-box-  
shadow:4px 4px 4px 4px rgb(168, 135, 115);  
box-shadow:4px 4px 4px 4px rgb(168, 135,  
115) }
```

Background

The CSS property to change the background color of an element to HunterLab 51.8561, 5.3135, 13.5017 is called "background". The background property can be set on classes, ids or directly on the HTML element.

```
.background, #background, body{  
background: rgb(168, 135, 115) }
```

If only the background color should be changed can be used:

```
.background{ background-color: rgb(168,  
135, 115) }
```

This example shows the color as background, it is applied via the CSS property "background".

To optimize and compress your CSS code, you can use our [online CSS compressor and optimizer](#) based on csstidy. If you want to create a linear or radial gradient as background or border, check our [CSS Gradient Generator](#).

Hey! You found this booklet interesting? Support Converting Colors with the new Membership Option!

The pro membership hides all ads, plus gives you double the colors in the color bucket, and more awesome pro features!

[Learn more, Memberships starting at \\$2.50/m!](#)

**Follow me
on Twitter!**

@ConvertingColor