

Converting Colors

HunterLab(51.8948, 66.9863,
9.3730)

Have a look what the booklet for
HunterLab(51.8948, 66.9863,
9.3730) contains.

HunterLab(51.9048, 67.0258, 9.4330)	3
<i>Conversions</i>	4
<i>Details</i>	6
<i>Harmonies</i>	12
<i>Previews</i>	24
<i>Color Blindness Simulation</i>	28
<i>CSS Examples</i>	31

Color

**HunterLab(51.9048, 67.0258,
9.4330)**

Conversions

Conversions Part 1

Format	Color
Hex	FA4B81
RGB	250, 75, 129
RGB Percent	98%, 29%, 51%
CMY	0.0196, 0.7058, 0.4941
CMYK	0.00, 0.70, 0.48, 0.02
HSL	341°, 95%, 64%
HSV	341°, 70%, 98%
XYZ	45.9028, 26.9411, 23.5496
YIQ	133.4810, 86.9660, 53.8940

Conversions

Conversions Part 2

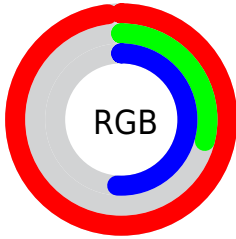
Format	Color
R _Y B	250, 75, 129
Decimal	16403329
CIE Lab	58.92, 69.35, 9.12
CIE LCh	59, 69.950, 7.492
Yxy	26.9426, 0.4762, 0.2795
Android (android.graphics.Color)	4294593409 (0xFFFA4B81)
YUV	133.4810, -2.2091, 102.1872
Hunter-Lab	51.9048, 67.0258, 9.4330

Details

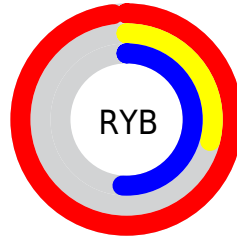
The HunterLab color **51.9048, 67.0258, 9.4330** is a light color, and the websafe version is hex **FF6699**. The color can be described as light washed rose. A complement of this color would be **85.9379, -52.6584, 15.9977**, and the grayscale version is **48.6070, -2.5935, 2.6409**.

A 20% lighter version of the original color is **64.7807, 47.4075, 0.2426**, and **33.5716, 59.2176, 8.3199** is the 20% darker color. If you saturate the color by 10%, you get **48.7541, 73.8488, 12.7944**, and if you desaturate by 10%, it is **56.1469, 58.1359, 6.7749**.

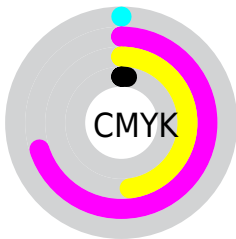
Distribution



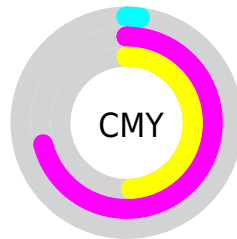
- Red (98%)
- Green (29%)
- Blue (51%)



- Red (98%)
- Yellow (29%)
- Blue (51%)



- Cyan (0%)
- Magenta (70%)
- Yellow (48%)
- Black (2%)



- Cyan (2%)
- Magenta (71%)
- Yellow (49%)

Brightness & Saturation Gradients

These gradients show how the HunterLab color 51.9048, 67.0258, 9.4330 changes by changing the brightness by 10 percent. The first figure shows a shift by +10% for each color and the second figure -10%.

Similar to the brightness gradients but the following saturation gradients show a change of the HunterLab color 51.9048, 67.0258, 9.4330 by changing the saturation by 10% instead.

51.9048, 67.0258,
9.4330

51.9048, 67.0258,
9.4330

169.5226, 83.6035,
19.4249

41.8690, 64.7493,
8.3628

74.0214, 71.3454,
11.5819

32.5779, 62.4581,
7.2841

86.0216, 73.3700,
12.6660

24.0985, 60.2601,
6.1862

98.6082, 75.2993,
13.7603

16.5176, 58.4412,
5.0482

111.7550, 77.1346,
14.8662

9.9578, 57.8639,
4.3646

125.4391, 78.8790,
15.9850

0.0000, INF, NaN

0.0000, INF, NaN

139.6403, 80.5360,

17.1173

0.0000, NaN, NaN

154.3402, 82.1096,
18.2638

0.0000, NaN, NaN

■ 51.9048, 67.0258,
9.4330

■ 51.9048, 67.0258,
9.4330

■ 48.7541, 73.8488,
12.7944

■ 56.1469, 58.1359,
6.7749

■ 46.7285, 77.9432,
16.5942

■ 61.3669, 47.9973,
4.9156


■ 45.6749, 79.3957,
20.3868

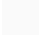
■ 67.4319, 37.2698,
3.8320


■ 45.6745, 79.3962,
20.3884

■ 74.2107, 26.3959,
3.4348

■ 81.5882, 15.6245,
3.6155

 89.4693, 5.0725,
4.2709

 97.7776, -5.2216,
5.3128

 99.5309, -6.9715,
4.8511

Harmonies

Analogous

The Analogous color harmony consists of three colors that are next to each other on the color wheel.



51.9063, 61.3786, -22.6316



51.9048, 67.0258, 9.4330



51.9063, 50.8825, 26.2379

Triad

The Triadic color harmony groups three colors that are evenly spaced from another and form a triangle on the color wheel.



51.9063, 67.0212, 9.4343



51.9063, -33.2127, 30.1175



51.9063, -22.9123, -76.8189

Complementary

The Complementary color scheme is a pair of colors which are on the opposite of each other on the color wheel.



51.9048, 67.0258, 9.4330



85.9379, -52.6584, 15.9977

Split Complementary

Split-complementary colors differ from the complementary color scheme. The scheme consists of three colors, the original color and two neighbors of the complement color.



51.9063, -40.8206, -42.4284



51.9048, 67.0258, 9.4330



51.9063, -45.7655, 19.6429

Square

The Square scheme is like the rectangle color scheme, but the four colors are evenly spaced on the color wheel.



51.9063, 67.0212, 9.4343



51.9063, -10.0255, 33.0062



51.9063, -48.1968, -4.7859



51.9063, 4.9023, -85.3098

Rectangle

The Rectangle color scheme consists of four colors that form a rectangle on the color wheel.



51.9048, 67.0258, 9.4330



51.9063, 31.7000, 30.9597



51.9063, -48.1968, -4.7859



51.9063, -30.0849, -67.2384

Sweetspot

The Sweet Spot groups the original color and five complimentary colors.



51.9063, 67.0212, 9.4343



82.6462, 17.1020, 3.6549



48.4592, 70.5343, -79.5612



37.2524, 9.3150, 1.6494

0.0000, NaN, NaN



46.2646, -2.4686, 2.5136

Same Dimension

The Same Dimension uses a secret algorithm to generate beautiful new colors.



51.9063, 67.0212, 9.4343



48.8787, 77.6071, 14.6424



56.0060, 48.4772, 28.3102



41.6094, 2.1071, 1.9975



33.2990, 57.9496, 14.3535



10.2229, 17.9630, 3.0711

Inverse Universe

The Inverse Universe completely reimagines the original color for something new.



51.9063, 67.0212, 9.4343



48.8787, 77.6071, 14.6424



76.4846, -28.3413, -23.4765



41.6094, 2.1071, 1.9975



33.2990, 57.9496, 14.3535



10.2229, 17.9630, 3.0711

Previews

White Background



This preview shows how the HunterLab color 51.9048, 67.0258, 9.4330 looks on a white background.

Color Contrast Check

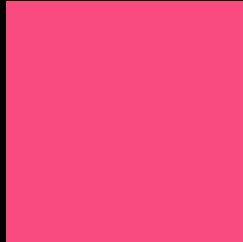
Large Text (above 18pt) WCAG AA ✓ Pass

Any Text WCAG AA × Fail

Large Text (above 18pt) WCAG AAA × Fail

Any Text WCAG AAA × Fail

Black Background



This preview shows how the HunterLab color 51.9048, 67.0258, 9.4330 looks on a black background.

Color Contrast Check

Large Text (above 18pt) WCAG AA ✓ Pass

Any Text WCAG AA ✓ Pass

Large Text (above 18pt) WCAG AAA ✓ Pass

Any Text WCAG AAA × Fail

If you want to check with other color combinations, try the [Color Contrast Checker](#).

HunterLab 51.9048, 67.0258, 9.4330 Background



This preview shows how black text looks on a background with the HunterLab color 51.9048, 67.0258, 9.4330.



This preview shows how white text looks on a background with the HunterLab color 51.9048, 67.0258,

Color Blindness Simulation

Color vision deficiency is a very complex topic, and I could not describe the different causes any better than Wikipedia does, so if you want to learn more, you should check out their [article about color blindness](#).

Dichromacy



Original Color

51.9048, 67.0258, 9.4330

Protanopia

52.0781, 0.4622, -8.9740

Deuteranopia

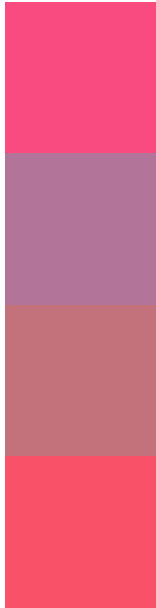
52.0176, 3.3400, 11.4934



Tritanopia

51.9792, 59.0532, 22.2827

Trichromacy



Original Color

51.9048, 67.0258, 9.4330

Protanomaly

49.4848, 23.3161, -5.2080

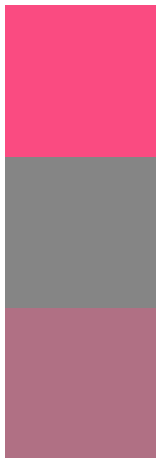
Deuteranomaly

50.0919, 26.9437, 8.7678

Tritanomaly

51.9847, 61.8542, 18.1784

Monochromacy



Original Color

51.9048, 67.0258, 9.4330

Achromatopsia

48.4304, -2.5841, 2.6313

Achromatomaly

47.4177, 21.9089, 2.3067

CSS Examples

Text

The CSS property to change the color of the text to HunterLab 51.9048, 67.0258, 9.4330 is called "color". The color property can be set on classes, ids or directly on the HTML element.

This example shows how text in the color `rgb(250, 75, 129)` looks like.

```
.text, #text, p{  
    color:rgb(250, 75, 129)  
}
```

If you want to add a text shadow in that color use the text-shadow property, you can generate a text shadow directly with our [CSS Text Shadow Generator](#).

Here you see how black text with a 4 pixel rgb(250, 75, 129) colored shadow looks like.

```
.shadow{ text-shadow: 4px 4px 2px rgb(250, 75, 129) }
```

Border

The CSS property to change the border of an element to HunterLab 51.9048, 67.0258, 9.4330 is called "border". The border property can be set on classes, ids or directly on the HTML element.

This example shows the color as border, it can be applied via the CSS property "border" or "border-color".

```
.border, #border, table{ border:4px solid rgb(250, 75, 129) }
```


If only the border color should be changed use the property border-color.

```
.border{ border-color:rgb(250, 75, 129) }
```

If you want to add a box shadow in that color use:

Here you see how a box with a 4 pixel rgb(250, 75, 129) colored shadow looks like.

```
.boxshadow{ -moz-box-shadow:4px 4px 4px  
4px rgb(250, 75, 129); -webkit-box-  
shadow:4px 4px 4px 4px rgb(250, 75, 129);  
box-shadow:4px 4px 4px 4px rgb(250, 75,  
129) }
```

Background

The CSS property to change the background color of an element to HunterLab 51.9048, 67.0258, 9.4330 is called "background". The background property can be set on classes, ids or directly on the HTML element.

```
.background, #background, body{  
background: rgb(250, 75, 129) }
```

If only the background color should be changed can be used:

```
.background{ background-color: rgb(250, 75,  
129) }
```

This example shows the color as background, it is applied via the CSS property "background".

To optimize and compress your CSS code, you can use our [online CSS compressor and optimizer](#) based on csstidy. If you want to create a linear or radial gradient as background or border, check our [CSS Gradient Generator](#).

Hey! You found this booklet interesting? Support Converting Colors with the new Membership Option!

The pro membership hides all ads, plus gives you double the colors in the color bucket, and more awesome pro features!

[Learn more, Memberships starting at \\$2.50/m!](#)

**Follow me
on Twitter!**

@ConvertingColor