

# Converting Colors

HunterLab(51.9178, 10.6018,  
18.8956)

Have a look what the booklet for  
HunterLab(51.9178, 10.6018,  
18.8956) contains.

<b>HunterLab(52.0188, 10.5804, 19.0685)</b> .....	3
<b><i>Conversions</i></b> .....	4
<b><i>Details</i></b> .....	6
<b><i>Harmonies</i></b> .....	12
<b><i>Previews</i></b> .....	24
<b><i>Color Blindness Simulation</i></b> .....	28
<b><i>CSS Examples</i></b> .....	31

# Color

**HunterLab(52.0188, 10.5804,  
19.0685)**

# Conversions

## Conversions Part 1

<b>Format</b>	<b>Color</b>
Hex	B68362
RGB	182, 131, 98
RGB Percent	71%, 51%, 38%
CMY	0.2863, 0.4863, 0.6157
CMYK	0.00, 0.28, 0.46, 0.29
HSL	24°, 37%, 55%
HSV	24°, 46%, 71%
XYZ	29.6123, 27.0596, 15.2175
YIQ	142.4870, 40.9890, 0.5490

# Conversions

## Conversions Part 2

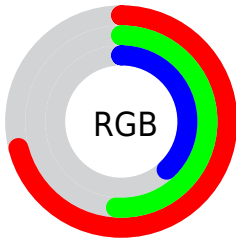
<b>Format</b>	<b>Color</b>
<b>R<sub>YB</sub></b>	182, 152, 98
Decimal	11961186
CIE <sub>Lab</sub>	59.03, 15.55, 25.57
CIE <sub>LCh</sub>	59, 29.930, 58.689
Y <sub>xy</sub>	27.0609, 0.4119, 0.3764
Android (android.graphics.Color)	4290151266 (0xFFB68362)
YUV	142.4870, -21.9321, 34.6529
Hunter-Lab	52.0188, 10.5804, 19.0685

# Details

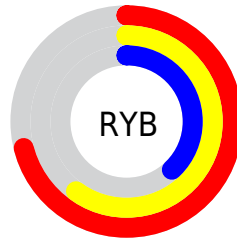
The HunterLab color **52.0188, 10.5804, 19.0685** is a dark color, and the websafe version is hex **CC9966**. A complement of this color would be **52.4098, -9.2018, -17.9322**, and the grayscale version is **52.2787, -2.7895, 2.8404**.

A 20% lighter version of the original color is **74.1459, 11.0796, 23.1456**, and **32.6127, 10.2078, 14.5806** is the 20% darker color. If you saturate the color by 10%, you get **48.9323, 14.4785, 21.2560**, and if you desaturate by 10%, it is **55.2927, 6.9834, 16.4100**.

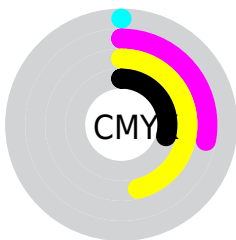
# Distribution



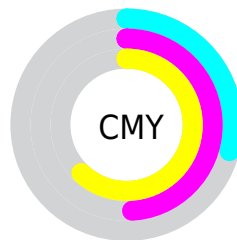
- Red (71%)
- Green (51%)
- Blue (38%)



- Red (71%)
- Yellow (60%)
- Blue (38%)



- Cyan (0%)
- Magenta (28%)
- Yellow (46%)
- Black (29%)



- Cyan (29%)
- Magenta (49%)
- Yellow (62%)

# Brightness & Saturation Gradients

These gradients show how the HunterLab color 52.0188, 10.5804, 19.0685 changes by changing the brightness by 10 percent. The first figure shows a shift by +10% for each color and the second figure -10%.

Similar to the brightness gradients but the following saturation gradients show a change of the HunterLab color 52.0188, 10.5804, 19.0685 by changing the saturation by 10% instead.



■ 52.0188, 10.5804,  
19.0685

■ 52.0188, 10.5804,  
19.0685

169.6914, 10.2384,  
36.1971

■ 41.9749, 10.2834,  
16.9181

■ 74.1495, 10.9220,  
23.1326

■ 32.6753, 9.8913,  
14.6502

■ 86.1563, 10.9883,  
25.0813

■ 24.1866, 9.3851,  
12.2210

■ 98.7491, 10.9929,  
26.9908

■ 16.5953, 8.7419,  
9.8083

■ 111.9019, 10.9407,  
28.8700

■ 10.0235, 7.9311,  
7.0165

125.5918, 10.8358,  
30.7254

0.0000, INF, NaN

0.0000, NaN, NaN

139.7985, 10.6818,

32.5624

0.0000, NaN, NaN

154.5038, 10.4818,  
34.3851

0.0000, NaN, NaN

■ 52.0188, 10.5804,  
19.0685

■ 52.0188, 10.5804,  
19.0685

■ 48.9323, 14.4785,  
21.2560

■ 55.2927, 6.9834,  
16.4100

■ 46.0499, 18.6779,  
22.9085

■ 58.7314, 3.6873,  
13.3374

■ 43.3949, 23.1470,  
23.9693

■ 62.3195, 0.6738,  
9.9049

■ 40.9897, 27.8252,  
24.3980

■ 66.0425, -2.0774,  
6.1590

■ 38.8539, 32.6065,  
24.2056

■ 69.8875, -4.5883,  
2.1397

■ 38.1006, 34.4119,  
24.0799

■ 73.8434, -6.8809,  
-2.1194

■ 77.9006, -8.9764,  
-6.5899

■ 82.0507, -10.8944,  
-11.2483

■ 86.0277, -14.0966,  
-12.4403

# Harmonies

## Analogous

The Analogous color harmony consists of three colors that are next to each other on the color wheel.



52.0201, 20.5095, 12.8246



52.0188, 10.5804, 19.0685



52.0201, -2.2166, 21.1605

# Triad

The Triadic color harmony groups three colors that are evenly spaced from another and form a triangle on the color wheel.



52.0201, 10.5780, 19.0692



52.0201, -25.0791, 3.3621



52.0201, 9.5149, -22.0476

# Complementary

The Complementary color scheme is a pair of colors which are on the opposite of each other on the color wheel.



52.0188, 10.5804, 19.0685



52.4098, -9.2018, -17.9322

# Split Complementary

Split-complementary colors differ from the complementary color scheme. The scheme consists of three colors, the original color and two neighbors of the complement color.



52.0201, -3.3380, -26.2779



52.0188, 10.5804, 19.0685



52.0201, -22.5761, -9.6471

# Square

The Square scheme is like the rectangle color scheme, but the four colors are evenly spaced on the color wheel.



52.0201, 10.5780, 19.0692



52.0201, -22.1017, 13.5471



52.0201, -14.9100, -21.2792



52.0201, 19.8554, -10.7970



# Rectangle

The Rectangle color scheme consists of four colors that form a rectangle on the color wheel.



52.0188, 10.5804, 19.0685



52.0201, -10.3996, 20.4264



52.0201, -14.9100, -21.2792



52.0201, 5.3084, -24.4419

# Sweetspot

The Sweet Spot groups the original color and five complimentary colors.



52.0201, 10.5780, 19.0692



84.8588, 0.1709, 12.4011



45.6905, 33.9151, -8.5851



39.3805, 0.4699, 6.3221



96.5975, -5.1542, 5.2483



43.2801, -2.3093, 2.3515



# Same Dimension

The Same Dimension uses a secret algorithm to generate beautiful new colors.



52.0201, 10.5780, 19.0692



65.9757, 19.3737, 28.5626



63.5674, -9.3485, 28.2283



30.9444, -0.5855, 3.5246



32.2073, 28.4243, 20.3436



6.9815, 3.1274, 4.3567



# Inverse Universe

The Inverse Universe completely reimagines the original color for something new.



52.4098, -9.2018, -17.9322



66.5643, -12.2376, -30.6650



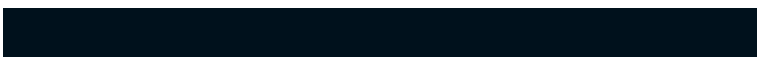
40.8134, 10.8967, -38.9511



30.9874, -2.6004, -0.2368



32.3539, -1.4260, -37.3613

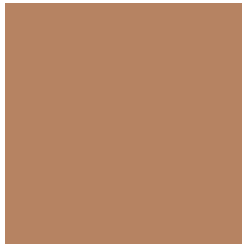


6.9705, -1.6709, -5.1054



# Previews

## White Background



This preview shows how the HunterLab color 52.0188, 10.5804, 19.0685 looks on a white background.

## Color Contrast Check

Large Text (above 18pt) WCAG AA ✓ Pass

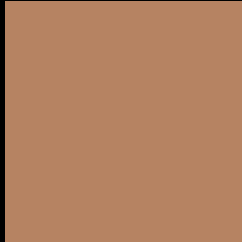
Any Text WCAG AA × Fail

Large Text (above 18pt) WCAG AAA × Fail

Any Text WCAG AAA × Fail



# Black Background



This preview shows how the HunterLab color 52.0188, 10.5804, 19.0685 looks on a black background.

## Color Contrast Check

Large Text (above 18pt) WCAG AA ✓ Pass

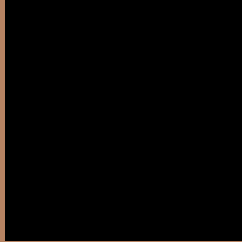
Any Text WCAG AA ✓ Pass

Large Text (above 18pt) WCAG AAA ✓ Pass

Any Text WCAG AAA × Fail

If you want to check with other color combinations, try the [Color Contrast Checker](#).

## HunterLab 52.0188, 10.5804, 19.0685 Background



This preview shows how black text looks on a background with the HunterLab color 52.0188, 10.5804, 19.0685.



This preview shows how white text looks on a background with the HunterLab color 52.0188, 10.5804,



# Color Blindness Simulation

Color vision deficiency is a very complex topic, and I could not describe the different causes any better than Wikipedia does, so if you want to learn more, you should check out their [article about color blindness](#).

## Dichromacy



### Original Color

52.0188, 10.5804, 19.0685

### Protanopia

52.0553, -4.4859, 17.3824

### Deuteranopia

51.9783, 3.6117, 19.1919



## Tritanopia

51.9746, 18.6434, 5.7819

# Trichromacy



## Original Color

52.0188, 10.5804, 19.0685

## Protanomaly

51.9702, 0.9199, 17.9939

## Deuteranomaly

51.8767, 6.0355, 19.1465

## Tritanomaly

51.9941, 15.4332, 11.3127

# Monochromacy



## Original Color

52.0188, 10.5804, 19.0685

## Achromatopsia

52.0094, -2.7751, 2.8258

## Achromatomaly

51.8184, 1.4953, 9.3716

# CSS Examples

## Text

The CSS property to change the color of the text to HunterLab 52.0188, 10.5804, 19.0685 is called "color". The color property can be set on classes, ids or directly on the HTML element.

This example shows how text in the color `rgb(182, 131, 98)` looks like.

```
.text, #text, p{  
    color:rgb(182, 131, 98)  
}
```

If you want to add a text shadow in that color use the text-shadow property, you can generate a text shadow directly with our [CSS Text Shadow Generator](#).

Here you see how black text with a 4 pixel rgb(182, 131, 98) colored shadow looks like.

```
.shadow{ text-shadow: 4px 4px 2px rgb(182, 131, 98) }
```

## Border

The CSS property to change the border of an element to HunterLab 52.0188, 10.5804, 19.0685 is called "border". The border property can be set on classes, ids or directly on the HTML element.

This example shows the color as border, it can be applied via the CSS property "border" or "border-color".

```
.border, #border, table{ border:4px solid rgb(182, 131, 98) }
```



If only the border color should be changed use the property `border-color`.

```
.border{ border-color:rgb(182, 131, 98) }
```

If you want to add a box shadow in that color use:

Here you see how a box with a 4 pixel `rgb(182, 131, 98)` colored shadow looks like.

```
.boxshadow{ -moz-box-shadow:4px 4px 4px  
4px rgb(182, 131, 98); -webkit-box-  
shadow:4px 4px 4px 4px rgb(182, 131, 98);  
box-shadow:4px 4px 4px 4px rgb(182, 131,  
98) }
```

# Background

The CSS property to change the background color of an element to HunterLab 52.0188, 10.5804, 19.0685 is called "background". The background property can be set on classes, ids or directly on the HTML element.

```
.background, #background, body{  
background: rgb(182, 131, 98) }
```

If only the background color should be changed can be used:

```
.background{ background-color: rgb(182,  
131, 98) }
```

This example shows the color as background, it is applied via the CSS property "background".

To optimize and compress your CSS code, you can use our [online CSS compressor and optimizer](#) based on csstidy. If you want to create a linear or radial gradient as background or border, check our [CSS Gradient Generator](#).

Hey! You found this booklet interesting? Support Converting Colors with the new Membership Option!

The pro membership hides all ads, plus gives you double the colors in the color bucket, and more awesome pro features!

**[Learn more, Memberships starting at \\$2.50/m!](#)**

**Follow me  
on Twitter!**

@ConvertingColor