

Converting Colors

HunterLab(51.9429, 19.4800,
8.1183)

Have a look what the booklet for
HunterLab(51.9429, 19.4800,
8.1183) contains.

HunterLab(51.9329, 19.4557, 8.2305)	3
<i>Conversions</i>	4
<i>Details</i>	6
<i>Harmonies</i>	12
<i>Previews</i>	24
<i>Color Blindness Simulation</i>	28
<i>CSS Examples</i>	31

Color

**HunterLab(51.9329, 19.4557,
8.2305)**

Conversions

Conversions Part 1

Format	Color
Hex	BC7D82
RGB	188, 125, 130
RGB Percent	74%, 49%, 51%
CMY	0.2627, 0.5098, 0.4902
CMYK	0.00, 0.34, 0.31, 0.26
HSL	355°, 32%, 61%
HSV	355°, 34%, 74%
XYZ	32.1019, 26.9703, 24.6329
YIQ	144.4070, 35.9430, 14.9110

Conversions

Conversions Part 2

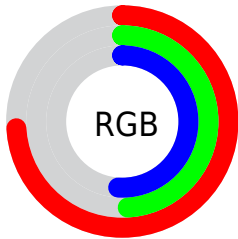
Format	Color
RYB	188, 125, 130
Decimal	12352898
CIELab	58.95, 25.16, 7.35
CIELCh	59, 26.208, 16.296
Yxy	26.9716, 0.3835, 0.3222
Android (android.graphics.Color)	4290542978 (0xFFBC7D82)
YUV	144.4070, -7.1027, 38.2311
Hunter-Lab	51.9329, 19.4557, 8.2305

Details

The HunterLab color **51.9329, 19.4557, 8.2305** is a dark color, and the websafe version is hex **CC9999**. A complement of this color would be **66.1407, -21.3180, 0.2209**, and the grayscale version is **52.9921, -2.8275, 2.8792**.

A 20% lighter version of the original color is **74.0625, 20.9601, 10.1399**, and **32.5773, 17.9143, 6.2198** is the 20% darker color. If you saturate the color by 10%, you get **47.1456, 26.8299, 9.9876**, and if you desaturate by 10%, it is **57.1797, 12.2358, 6.6931**.

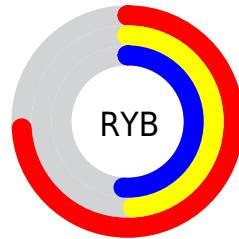
Distribution



Red (74%)

Green (49%)

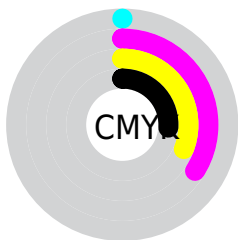
Blue (51%)



Red (74%)

Yellow (49%)

Blue (51%)

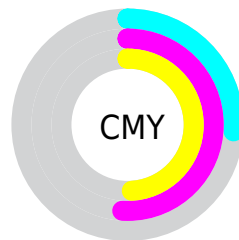


Cyan (0%)

Magenta (34%)

Yellow (31%)

Black (26%)



Cyan (26%)

Magenta (51%)

Yellow (49%)

Brightness & Saturation Gradients

These gradients show how the HunterLab color 51.9329, 19.4557, 8.2305 changes by changing the brightness by 10 percent. The first figure shows a shift by +10% for each color and the second figure -10%.

Similar to the brightness gradients but the following saturation gradients show a change of the HunterLab color 51.9329, 19.4557, 8.2305 by changing the saturation by 10% instead.

■ 51.9329, 19.4557,
8.2305

■ 51.9329, 19.4557,
8.2305

169.5640, 22.5717,
17.5039

■ 41.8949, 18.6962,
7.2667

■ 74.0528, 20.6649,
10.1885

■ 32.6017, 17.8207,
6.3052

■ 86.0546, 21.1397,
11.1861

■ 24.1201, 16.8107,
5.3384

■ 98.6427, 21.5379,
12.1985

■ 16.5366, 15.6497,
4.3512

111.7910, 21.8659,
13.2265

■ 9.9739, 14.3371,
3.6264

125.4766, 22.1289,
14.2707

0.0000, INF, NaN

0.0000, NaN, NaN

139.6791, 22.3317,

15.3315

0.0000, NaN, NaN

154.3803, 22.4781,
16.4092

0.0000, NaN, NaN

■ 51.9329, 19.4557,
8.2305

■ 51.9329, 19.4557,
8.2305

■ 47.1456, 26.8299,
9.9876

■ 57.1797, 12.2358,
6.6931

■ 42.9030, 34.1887,
11.9471

■ 62.8080, 5.2525,
5.3619

■ 39.3068, 41.2042,
14.0490

■ 68.7593, -1.4796,
4.2158

■ 36.4559, 47.3847,
16.1673

■ 74.9863, -7.9738,
3.2299

■ 34.4229, 52.1484,
18.1117

■ 81.4513, -14.2557,
2.3807

■ 33.2183, 55.0409,
19.6728

■ 88.1244, -20.3549,
1.6470

■ 32.7500, 56.1899,
20.3520

■ 94.4387, -25.5175,
0.3623

■ 94.5682, -24.7809,
-1.4762

Harmonies

Analogous

The Analogous color harmony consists of three colors that are next to each other on the color wheel.



51.9341, 19.7453, -2.2418



51.9329, 19.4557, 8.2305



51.9341, 12.8888, 15.5175

Triad

The Triadic color harmony groups three colors that are evenly spaced from another and form a triangle on the color wheel.



51.9341, 19.4534, 8.2314



51.9341, -17.3850, 15.0387



51.9341, -7.7572, -21.1535

Complementary

The Complementary color scheme is a pair of colors which are on the opposite of each other on the color wheel.



51.9329, 19.4557, 8.2305



66.1407, -21.3180, 0.2209

Split Complementary

Split-complementary colors differ from the complementary color scheme. The scheme consists of three colors, the original color and two neighbors of the complement color.



51.9341, -16.7755, -14.1882



51.9329, 19.4557, 8.2305



51.9341, -22.0089, 7.4312

Square

The Square scheme is like the rectangle color scheme, but the four colors are evenly spaced on the color wheel.



51.9341, 19.4534, 8.2314



51.9341, -8.6552, 18.8426



51.9341, -21.7956, -3.2291



51.9341, 3.3815, -20.8120

Rectangle

The Rectangle color scheme consists of four colors that form a rectangle on the color wheel.



51.9329, 19.4557, 8.2305



51.9341, 6.1313, 18.2514



51.9341, -21.7956, -3.2291



51.9341, -11.1167, -19.5350

Sweetspot

The Sweet Spot groups the original color and five complimentary colors.



51.9341, 19.4534, 8.2314



87.1889, 4.0028, 6.6763



53.2316, 27.1618, -19.7153



39.9159, 2.4522, 3.2001



97.7295, -5.2146, 5.3098



44.2712, -2.3622, 2.4053

Same Dimension

The Same Dimension uses a secret algorithm to generate beautiful new colors.



51.9341, 19.4534, 8.2314



65.2390, 33.2747, 12.7415



58.6403, 5.5881, 16.6131



30.9004, 1.1493, 2.3041



27.0317, 46.3958, 16.6677



5.3894, 9.3281, 2.7175

Inverse Universe

The Inverse Universe completely reimagines the original color for something new.



51.9341, 19.4534, 8.2314



65.2390, 33.2747, 12.7415



58.0901, -8.2074, -12.9086



30.9004, 1.1493, 2.3041



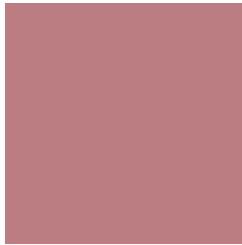
27.0317, 46.3958, 16.6677



5.3894, 9.3281, 2.7175

Previews

White Background



This preview shows how the HunterLab color 51.9329, 19.4557, 8.2305 looks on a white background.

Color Contrast Check

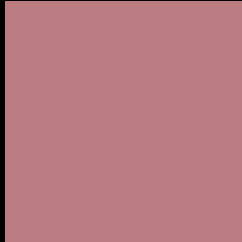
Large Text (above 18pt) WCAG AA ✓ Pass

Any Text WCAG AA ✗ Fail

Large Text (above 18pt) WCAG AAA ✗ Fail

Any Text WCAG AAA ✗ Fail

Black Background



This preview shows how the HunterLab color 51.9329, 19.4557, 8.2305 looks on a black background.

Color Contrast Check

Large Text (above 18pt) WCAG AA ✓ Pass

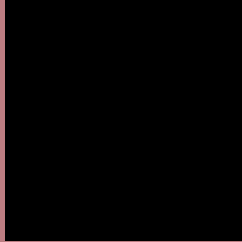
Any Text WCAG AA ✓ Pass

Large Text (above 18pt) WCAG AAA ✓ Pass

Any Text WCAG AAA × Fail

If you want to check with other color combinations, try the [Color Contrast Checker](#).

HunterLab 51.9329, 19.4557, 8.2305 Background



This preview shows how black text looks on a background with the HunterLab color 51.9329, 19.4557, 8.2305.



This preview shows how white text looks on a background with the HunterLab color 51.9329, 19.4557,

Color Blindness Simulation

Color vision deficiency is a very complex topic, and I could not describe the different causes any better than Wikipedia does, so if you want to learn more, you should check out their [article about color blindness](#).

Dichromacy



Original Color

51.9329, 19.4557, 8.2305

Protanopia

52.1822, -2.3454, 4.3602

Deuteranopia

51.9874, 3.5809, 8.8063



Tritanopia

51.7957, 20.4979, 6.4574

Trichromacy



Original Color

51.9329, 19.4557, 8.2305

Protanomaly

51.9259, 5.1968, 5.4916

Deuteranomaly

51.9788, 9.1222, 8.4986

Tritanomaly

51.7688, 20.3630, 6.8420

Monochromacy



Original Color

51.9329, 19.4557, 8.2305

Achromatopsia

52.8104, -2.8178, 2.8693

Achromatomaly

52.1814, 4.8164, 4.4846

CSS Examples

Text

The CSS property to change the color of the text to HunterLab 51.9329, 19.4557, 8.2305 is called "color". The color property can be set on classes, ids or directly on the HTML element.

This example shows how text in the color `rgb(188, 125, 130)` looks like.

```
.text, #text, p{  
    color:rgb(188, 125, 130)  
}
```

If you want to add a text shadow in that color use the text-shadow property, you can generate a text shadow directly with our [CSS Text Shadow Generator](#).

Here you see how black text with a 4 pixel rgb(188, 125, 130) colored shadow looks like.

```
.shadow{ text-shadow: 4px 4px 2px rgb(188, 125, 130) }
```

Border

The CSS property to change the border of an element to HunterLab 51.9329, 19.4557, 8.2305 is called "border". The border property can be set on classes, ids or directly on the HTML element.

This example shows the color as border, it can be applied via the CSS property "border" or "border-color".

```
.border, #border, table{ border:4px solid rgb(188, 125, 130) }
```


If only the border color should be changed use the property `border-color`.

```
.border{ border-color:rgb(188, 125, 130) }
```

If you want to add a box shadow in that color use:

Here you see how a box with a 4 pixel `rgb(188, 125, 130)` colored shadow looks like.

```
.boxshadow{ -moz-box-shadow:4px 4px 4px  
4px rgb(188, 125, 130); -webkit-box-  
shadow:4px 4px 4px 4px rgb(188, 125, 130);  
box-shadow:4px 4px 4px 4px rgb(188, 125,  
130) }
```

Background

The CSS property to change the background color of an element to HunterLab 51.9329, 19.4557, 8.2305 is called "background". The background property can be set on classes, ids or directly on the HTML element.

```
.background, #background, body{  
background: rgb(188, 125, 130) }
```

If only the background color should be changed can be used:

```
.background{ background-color: rgb(188,  
125, 130) }
```

This example shows the color as background, it is applied via the CSS property "background".

To optimize and compress your CSS code, you can use our [online CSS compressor and optimizer](#) based on csstidy. If you want to create a linear or radial gradient as background or border, check our [CSS Gradient Generator](#).

Hey! You found this booklet interesting? Support Converting Colors with the new Membership Option!

The pro membership hides all ads, plus gives you double the colors in the color bucket, and more awesome pro features!

[Learn more, Memberships starting at \\$2.50/m!](#)

**Follow me
on Twitter!**

@ConvertingColor