

Converting Colors

HunterLab(51.9810, 2.9312,
12.7081)

Have a look what the booklet for
HunterLab(51.9810, 2.9312,
12.7081) contains.

HunterLab(51.9479, 2.9661, 12.5000)	3
<i>Conversions</i>	4
<i>Details</i>	6
<i>Harmonies</i>	12
<i>Previews</i>	24
<i>Color Blindness Simulation</i>	28
<i>CSS Examples</i>	31

Color

**HunterLab(51.9479, 2.9661,
12.5000)**

Conversions

Conversions Part 1

Format	Color
Hex	A38976
RGB	163, 137, 118
RGB Percent	64%, 54%, 46%
CMY	0.3608, 0.4627, 0.5373
CMYK	0.00, 0.16, 0.28, 0.36
HSL	25°, 20%, 55%
HSV	25°, 28%, 64%
XYZ	27.3199, 26.9858, 20.9084
YIQ	142.6080, 21.5950, -0.3970

Conversions

Conversions Part 2

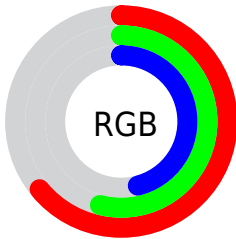
Format	Color
RYB	163, 151, 118
Decimal	10717558
CIELab	58.96, 6.87, 13.86
CIELCh	59, 15.467, 63.645
Yxy	26.9871, 0.3632, 0.3588
Android (android.graphics.Color)	4288907638 (0xFFA38976)
YUV	142.6080, -12.1317, 17.8838
Hunter-Lab	51.9479, 2.9661, 12.5000

Details

The HunterLab color $51.9479, 2.9661, 12.5000$ is a dark color, and the websafe version is hex 999999 . A complement of this color would be $51.4214, -6.4848, -8.3805$, and the grayscale version is $52.2946, -2.7903, 2.8413$.

A 20% lighter version of the original color is $73.9152, 2.4614, 15.0839$, and $32.6161, 3.5011, 9.6261$ is the 20% darker color. If you saturate the color by 10%, you get $49.0621, 5.6550, 15.2337$, and if you desaturate by 10%, it is $54.9581, 0.5216, 9.4230$.

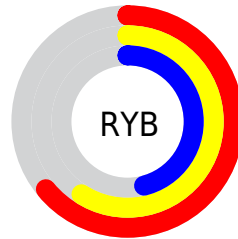
Distribution



Red (64%)

Green (54%)

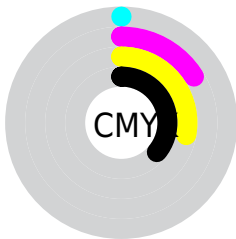
Blue (46%)



Red (64%)

Yellow (59%)

Blue (46%)

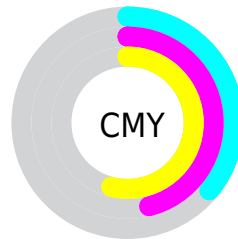


Cyan (0%)

Magenta (16%)

Yellow (28%)

Black (36%)



Cyan (36%)

Magenta (46%)

Yellow (54%)

Brightness & Saturation Gradients

These gradients show how the HunterLab color 51.9479, 2.9661, 12.5000 changes by changing the brightness by 10 percent. The first figure shows a shift by +10% for each color and the second figure -10%.

Similar to the brightness gradients but the following saturation gradients show a change of the HunterLab color 51.9479, 2.9661, 12.5000 by changing the saturation by 10% instead.

■ 51.9479, 2.9661,
12.5000

■ 51.9479, 2.9661,
12.5000

■ 169.5861, -0.6420,
24.4680

■ 41.9089, 3.1214,
11.1329

■ 74.0697, 2.4745,
15.1757

■ 32.6145, 3.2099,
9.7280

■ 86.0723, 2.1528,
16.4985

■ 24.1316, 3.2186,
8.2642

■ 98.6612, 1.7854,
17.8184

■ 16.5468, 3.1309,
6.7044

■ 111.8103, 1.3754,
19.1387

■ 9.9826, 2.9205,
6.3262

■ 125.4966, 0.9256,
20.4620

0.0000, INF, NaN

0.0000, NaN, NaN

■ 139.6998, 0.4381,

21.7904

0.0000, NaN, NaN

154.4018, -0.0850,
23.1253

0.0000, NaN, NaN

■ 51.9479, 2.9661,
12.5000

■ 51.9479, 2.9661,
12.5000

■ 49.0621, 5.6550,
15.2337

■ 54.9581, 0.5216,
9.4230

■ 46.3098, 8.6073,
17.5761

■ 58.0778, -1.6901,
6.0415

■ 43.7063, 11.8283,
19.4787

■ 61.2983, -3.6892,
2.3920

■ 41.2669, 15.3147,
20.8918

■ 64.6108, -5.4941,
-1.4945

■ 39.0078, 19.0465,
21.7715

■ 68.0077, -7.1226,
-5.5916

■ 36.9450, 22.9809,
22.0904

■ 71.4822, -8.5912,
-9.8767

■ 35.0896, 27.0278,
21.9059

■ 75.0284, -9.9151,
-14.3306

■ 34.6734, 27.9822,
21.8555

■ 78.6411, -11.1084,
-18.9369

■ 81.9256, -14.3626,
-18.2374

Harmonies

Analogous

The Analogous color harmony consists of three colors that are next to each other on the color wheel.



51.9491, 8.1873, 9.0659



51.9479, 2.9661, 12.5000



51.9491, -3.5768, 13.4655

Triad

The Triadic color harmony groups three colors that are evenly spaced from another and form a triangle on the color wheel.



51.9491, 2.9643, 12.5007



51.9491, -14.8120, 2.0565



51.9491, 4.4253, -8.2271

Complementary

The Complementary color scheme is a pair of colors which are on the opposite of each other on the color wheel.



51.9479, 2.9661, 12.5000



51.4214, -6.4848, -8.3805

Split Complementary

Split-complementary colors differ from the complementary color scheme. The scheme consists of three colors, the original color and two neighbors of the complement color.



51.9491, -1.9676, -10.6800



51.9479, 2.9661, 12.5000



51.9491, -12.8969, -4.2950

Square

The Square scheme is like the rectangle color scheme, but the four colors are evenly spaced on the color wheel.



51.9491, 2.9643, 12.5007



51.9491, -13.6363, 7.8937



51.9491, -8.2748, -9.1590



51.9491, 9.0599, -2.8062

Rectangle

The Rectangle color scheme consists of four colors that form a rectangle on the color wheel.



51.9479, 2.9661, 12.5000



51.9491, -7.7540, 12.6920



51.9491, -8.2748, -9.1590



51.9491, 2.3996, -9.4547

Sweetspot

The Sweet Spot groups the original color and five complimentary colors.



51.9491, 2.9643, 12.5007



77.4931, -2.1090, 8.3398



47.7127, 16.1523, -3.2298



36.4337, -0.8031, 4.2740



90.9709, -4.8540, 4.9426



38.3822, -2.0480, 2.0854

Same Dimension

The Same Dimension uses a secret algorithm to generate beautiful new colors.



51.9491, 2.9643, 12.5007



67.1802, 6.0883, 18.9847



58.2898, -7.6410, 18.3501



27.4857, -0.6390, 3.1628



30.7081, 24.3148, 19.3479



5.3925, 1.4361, 3.3480

Inverse Universe

The Inverse Universe completely reimagines the original color for something new.



51.4214, -6.4848, -8.3805



66.3240, -9.1641, -14.7666



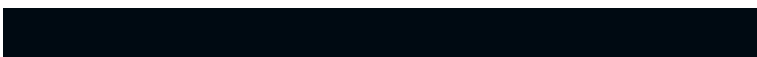
45.1154, 4.1795, -17.6640



27.3999, -2.1893, -0.2559



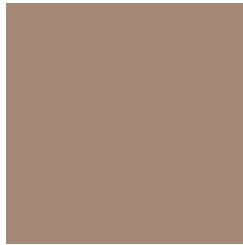
28.9672, 0.4889, -37.2618



5.1676, -1.4479, -3.3334

Previews

White Background



This preview shows how the HunterLab color 51.9479, 2.9661, 12.5000 looks on a white background.

Color Contrast Check

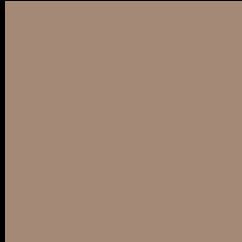
Large Text (above 18pt) WCAG AA ✓ Pass

Any Text WCAG AA × Fail

Large Text (above 18pt) WCAG AAA × Fail

Any Text WCAG AAA × Fail

Black Background



This preview shows how the HunterLab color 51.9479, 2.9661, 12.5000 looks on a black background.

Color Contrast Check

Large Text (above 18pt) WCAG AA ✓ Pass

Any Text WCAG AA ✓ Pass

Large Text (above 18pt) WCAG AAA ✓ Pass

Any Text WCAG AAA × Fail

If you want to check with other color combinations, try the [Color Contrast Checker](#).

HunterLab 51.9479, 2.9661, 12.5000 Background



This preview shows how black text looks on a background with the HunterLab color 51.9479, 2.9661, 12.5000.



This preview shows how white text looks on a background with the HunterLab color 51.9479, 2.9661,

12.5000.

Color Blindness Simulation

Color vision deficiency is a very complex topic, and I could not describe the different causes any better than Wikipedia does, so if you want to learn more, you should check out their [article about color blindness](#).

Dichromacy



Original Color

51.9479, 2.9661, 12.5000

Protanopia

52.1403, -3.4652, 11.8620

Deuteranopia

52.0498, 3.3090, 12.6071



Tritanopia

51.8610, 9.5656, 1.9588

Trichromacy



Original Color

51.9479, 2.9661, 12.5000

Protanomaly

52.0160, -1.0319, 12.1406

Deuteranomaly

52.0498, 3.3090, 12.6071

Tritanomaly

51.7676, 7.3858, 5.7758

Monochromacy



Original Color

51.9479, 2.9661, 12.5000

Achromatopsia

52.4097, -2.7964, 2.8475

Achromatomaly

52.2063, -1.0769, 6.5359

CSS Examples

Text

The CSS property to change the color of the text to HunterLab 51.9479, 2.9661, 12.5000 is called "color". The color property can be set on classes, ids or directly on the HTML element.

This example shows how text in the color `rgb(163, 137, 118)` looks like.

```
.text, #text, p{  
    color:rgb(163, 137, 118)  
}
```

If you want to add a text shadow in that color use the text-shadow property, you can generate a text shadow directly with our [CSS Text Shadow Generator](#).

Here you see how black text with a 4 pixel rgb(163, 137, 118) colored shadow looks like.

```
.shadow{ text-shadow: 4px 4px 2px rgb(163, 137, 118) }
```

Border

The CSS property to change the border of an element to HunterLab 51.9479, 2.9661, 12.5000 is called "border". The border property can be set on classes, ids or directly on the HTML element.

This example shows the color as border, it can be applied via the CSS property "border" or "border-color".

```
.border, #border, table{ border:4px solid rgb(163, 137, 118) }
```


If only the border color should be changed use the property `border-color`.

```
.border{ border-color:rgb(163, 137, 118) }
```

If you want to add a box shadow in that color use:

Here you see how a box with a 4 pixel `rgb(163, 137, 118)` colored shadow looks like.

```
.boxshadow{ -moz-box-shadow:4px 4px 4px  
4px rgb(163, 137, 118); -webkit-box-  
shadow:4px 4px 4px 4px rgb(163, 137, 118);  
box-shadow:4px 4px 4px 4px rgb(163, 137,  
118) }
```

Background

The CSS property to change the background color of an element to HunterLab 51.9479, 2.9661, 12.5000 is called "background". The background property can be set on classes, ids or directly on the HTML element.

```
.background, #background, body{  
background: rgb(163, 137, 118) }
```

If only the background color should be changed can be used:

```
.background{ background-color: rgb(163,  
137, 118) }
```

This example shows the color as background, it is applied via the CSS property "background".

To optimize and compress your CSS code, you can use our [online CSS compressor and optimizer](#) based on csstidy. If you want to create a linear or radial gradient as background or border, check our [CSS Gradient Generator](#).

Hey! You found this booklet interesting? Support Converting Colors with the new Membership Option!

The pro membership hides all ads, plus gives you double the colors in the color bucket, and more awesome pro features!

[Learn more, Memberships starting at \\$2.50/m!](#)

**Follow me
on Twitter!**

@ConvertingColor