

Converting Colors

HunterLab(51.9882, 13.8678,
12.1460)

Have a look what the booklet for
HunterLab(51.9882, 13.8678,
12.1460) contains.

HunterLab(51.9631, 13.9453, 11.9888)	3
<i>Conversions</i>	4
<i>Details</i>	6
<i>Harmonies</i>	12
<i>Previews</i>	24
<i>Color Blindness Simulation</i>	28
<i>CSS Examples</i>	31

Color

**HunterLab(51.9631, 13.9453,
11.9888)**

Conversions

Conversions Part 1

Format	Color
Hex	B68178
RGB	182, 129, 120
RGB Percent	71%, 51%, 47%
CMY	0.2863, 0.4941, 0.5294
CMYK	0.00, 0.29, 0.34, 0.29
HSL	9°, 30%, 59%
HSV	9°, 34%, 71%
XYZ	30.5318, 27.0016, 21.3719
YIQ	143.8210, 34.4770, 8.4370

Conversions

Conversions Part 2

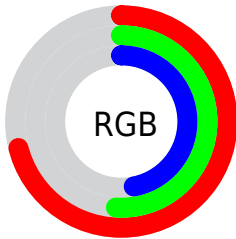
Format	Color
R_{YB}	182, 131, 120
Decimal	11960696
CIE _{Lab}	58.98, 19.26, 13.04
CIE _{LCh}	59, 23.257, 34.099
Yxy	27.0029, 0.3869, 0.3422
Android (android.graphics.Color)	4290150776 (0xFFB68178)
YUV	143.8210, -11.7438, 33.4830
Hunter-Lab	51.9631, 13.9453, 11.9888

Details

The HunterLab color **51.9631, 13.9453, 11.9888** is a dark color, and the websafe version is hex **CC9999**. A complement of this color would be **61.0379, -15.7729, -5.6535**, and the grayscale version is **52.7755, -2.8160, 2.8674**.

A 20% lighter version of the original color is **74.0170, 14.6143, 14.6007**, and **32.5144, 12.9204, 9.0817** is the 20% darker color. If you saturate the color by 10%, you get **47.7607, 19.7014, 14.2342**, and if you desaturate by 10%, it is **56.4827, 8.4523, 9.6324**.

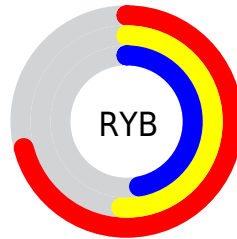
Distribution



Red (71%)

Green (51%)

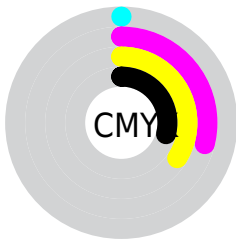
Blue (47%)



Red (71%)

Yellow (51%)

Blue (47%)

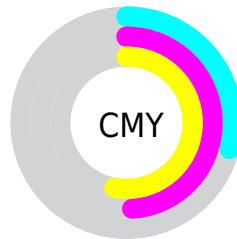


Cyan (0%)

Magenta (29%)

Yellow (34%)

Black (29%)



Cyan (29%)

Magenta (49%)

Yellow (53%)

Brightness & Saturation Gradients

These gradients show how the HunterLab color 51.9631, 13.9453, 11.9888 changes by changing the brightness by 10 percent. The first figure shows a shift by +10% for each color and the second figure -10%.

Similar to the brightness gradients but the following saturation gradients show a change of the HunterLab color 51.9631, 13.9453, 11.9888 by changing the saturation by 10% instead.

■ 51.9631, 13.9453,
11.9888

■ 51.9631, 13.9453,
11.9888

169.6087, 14.9587,
23.6094

■ 41.9230, 13.4649,
10.6742

■ 74.0868, 14.6291,
14.5716

■ 32.6276, 12.8797,
9.3271

■ 86.0903, 14.8559,
15.8524

■ 24.1434, 12.1702,
7.9281

■ 98.6801, 15.0148,
17.1325

■ 16.5572, 11.3140,
6.4432

111.8300, 15.1114,
18.4152

■ 9.9914, 10.2872,
5.9819

125.5171, 15.1503,
19.7026

0.0000, INF, NaN

0.0000, NaN, NaN

139.7210, 15.1357,

20.9966

0.0000, NaN, NaN

154.4237, 15.0708,
22.2985

0.0000, NaN, NaN

■ 51.9631, 13.9453,
11.9888

■ 51.9631, 13.9453,
11.9888

■ 47.7607, 19.7014,
14.2342

■ 56.4827, 8.4523,
9.6324

■ 43.9248, 25.6747,
16.3046

■ 61.2713, 3.2394,
7.2039

■ 40.5173, 31.7426,
18.1147

■ 66.2934, -1.7084,
4.7304

■ 37.6029, 37.6907,
19.5566

■ 71.5189, -6.4148,
2.2284

■ 35.2431, 43.2003,
20.5173

■ 76.9233, -10.9074,
-0.2926

■ 33.4817, 47.8799,
20.9195

■ 82.4865, -15.2136,
-2.8270

■ 32.7156, 50.0718,
21.0358

■ 88.1918, -19.3589,
-5.3720

■ 93.6518, -25.4920,
-2.6337

■ 94.1728, -26.2421,
-1.9945

Harmonies

Analogous

The Analogous color harmony consists of three colors that are next to each other on the color wheel.



51.9643, 17.6041, 4.1061



51.9631, 13.9453, 11.9888



51.9643, 5.8026, 16.6219

Triad

The Triadic color harmony groups three colors that are evenly spaced from another and form a triangle on the color wheel.



51.9643, 13.9431, 11.9896



51.9643, -18.8122, 10.1322



51.9643, -1.4080, -18.6652

Complementary

The Complementary color scheme is a pair of colors which are on the opposite of each other on the color wheel.



51.9631, 13.9453, 11.9888



61.0379, -15.7729, -5.6535

Split Complementary

Split-complementary colors differ from the complementary color scheme. The scheme consists of three colors, the original color and two neighbors of the complement color.



51.9643, -10.8309, -16.2363



51.9631, 13.9453, 11.9888



51.9643, -20.4298, 1.5177

Square

The Square scheme is like the rectangle color scheme, but the four colors are evenly spaced on the color wheel.



51.9643, 13.9431, 11.9896



51.9643, -13.0211, 15.6987



51.9643, -17.6157, -8.3800



51.9643, 8.3312, -14.5086

Rectangle

The Rectangle color scheme consists of four colors that form a rectangle on the color wheel.



51.9631, 13.9453, 11.9888



51.9643, -0.8041, 17.8076



51.9643, -17.6157, -8.3800



51.9643, -4.7178, -18.5962

Sweetspot

The Sweet Spot groups the original color and five complimentary colors.



51.9643, 13.9431, 11.9896



85.0999, 1.7251, 8.4079



51.4041, 26.7947, -13.8866



39.5522, 1.2536, 4.1703



96.5975, -5.1542, 5.2483



43.2801, -2.3093, 2.3515

Same Dimension

The Same Dimension uses a secret algorithm to generate beautiful new colors.



51.9643, 13.9431, 11.9896



65.6090, 24.6584, 18.4668



60.1576, -1.0505, 19.5372



30.3596, 0.4157, 2.8826



27.6038, 41.7177, 17.7397



5.7966, 6.0063, 3.6770

Inverse Universe

The Inverse Universe completely reimagines the original color for something new.



61.0379, -15.7729, -5.6535



80.3012, -23.8144, -10.1774



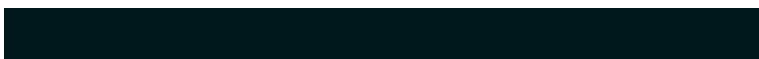
51.8996, -1.4981, -18.6040



31.5948, -3.5821, 0.4910



43.7599, -18.0663, -15.6962



8.5812, -3.8605, -2.3921

Previews

White Background



This preview shows how the HunterLab color 51.9631, 13.9453, 11.9888 looks on a white background.

Color Contrast Check

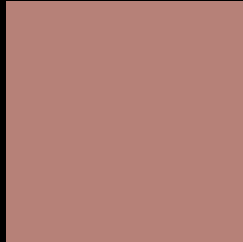
Large Text (above 18pt) WCAG AA ✓ Pass

Any Text WCAG AA × Fail

Large Text (above 18pt) WCAG AAA × Fail

Any Text WCAG AAA × Fail

Black Background



This preview shows how the HunterLab color 51.9631, 13.9453, 11.9888 looks on a black background.

Color Contrast Check

Large Text (above 18pt) WCAG AA ✓ Pass

Any Text WCAG AA ✓ Pass

Large Text (above 18pt) WCAG AAA ✓ Pass

Any Text WCAG AAA × Fail

If you want to check with other color combinations, try the [Color Contrast Checker](#).

HunterLab 51.9631, 13.9453, 11.9888 Background



This preview shows how black text looks on a background with the HunterLab color 51.9631, 13.9453, 11.9888.



This preview shows how white text looks on a background with the HunterLab color 51.9631, 13.9453,

Color Blindness Simulation

Color vision deficiency is a very complex topic, and I could not describe the different causes any better than Wikipedia does, so if you want to learn more, you should check out their [article about color blindness](#).

Dichromacy



Original Color

51.9631, 13.9453, 11.9888

Protanopia

52.1040, -3.3035, 9.5874

Deuteranopia

52.0728, 3.4321, 12.2754



Tritanopia

52.1025, 17.7673, 5.9106

Trichromacy



Original Color

51.9631, 13.9453, 11.9888

Protanomaly

51.7882, 2.7115, 10.1281

Deuteranomaly

52.0000, 7.3447, 12.2713

Tritanomaly

52.0743, 16.0807, 8.3240

Monochromacy



Original Color

51.9631, 13.9453, 11.9888

Achromatopsia

52.8104, -2.8178, 2.8693

Achromatomaly

52.4248, 2.5933, 6.4260

CSS Examples

Text

The CSS property to change the color of the text to HunterLab 51.9631, 13.9453, 11.9888 is called "color". The color property can be set on classes, ids or directly on the HTML element.

This example shows how text in the color `rgb(182, 129, 120)` looks like.

```
.text, #text, p{  
    color:rgb(182, 129, 120)  
}
```

If you want to add a text shadow in that color use the text-shadow property, you can generate a text shadow directly with our [CSS Text Shadow Generator](#).

Here you see how black text with a 4 pixel rgb(182, 129, 120) colored shadow looks like.

```
.shadow{ text-shadow: 4px 4px 2px rgb(182, 129, 120) }
```

Border

The CSS property to change the border of an element to HunterLab 51.9631, 13.9453, 11.9888 is called "border". The border property can be set on classes, ids or directly on the HTML element.

This example shows the color as border, it can be applied via the CSS property "border" or "border-color".

```
.border, #border, table{ border:4px solid rgb(182, 129, 120) }
```


If only the border color should be changed use the property `border-color`.

```
.border{ border-color:rgb(182, 129, 120) }
```

If you want to add a box shadow in that color use:

Here you see how a box with a 4 pixel `rgb(182, 129, 120)` colored shadow looks like.

```
.boxshadow{ -moz-box-shadow:4px 4px 4px  
4px rgb(182, 129, 120); -webkit-box-  
shadow:4px 4px 4px 4px rgb(182, 129, 120);  
box-shadow:4px 4px 4px 4px rgb(182, 129,  
120) }
```

Background

The CSS property to change the background color of an element to HunterLab 51.9631, 13.9453, 11.9888 is called "background". The background property can be set on classes, ids or directly on the HTML element.

```
.background, #background, body{  
background: rgb(182, 129, 120) }
```

If only the background color should be changed can be used:

```
.background{ background-color: rgb(182,  
129, 120) }
```

This example shows the color as background, it is applied via the CSS property "background".

To optimize and compress your CSS code, you can use our [online CSS compressor and optimizer](#) based on csstidy. If you want to create a linear or radial gradient as background or border, check our [CSS Gradient Generator](#).

Hey! You found this booklet interesting? Support Converting Colors with the new Membership Option!

The pro membership hides all ads, plus gives you double the colors in the color bucket, and more awesome pro features!

[Learn more, Memberships starting at \\$2.50/m!](#)

**Follow me
on Twitter!**

@ConvertingColor