

Converting Colors

HunterLab(51.9894, 2.0472,
14.4745)

Have a look what the booklet for
HunterLab(51.9894, 2.0472,
14.4745) contains.

HunterLab(52.0897, 1.7684, 14.6802)	3
<i>Conversions</i>	4
<i>Details</i>	6
<i>Harmonies</i>	12
<i>Previews</i>	24
<i>Color Blindness Simulation</i>	28
<i>CSS Examples</i>	31

Color

**HunterLab(52.0897, 1.7684,
14.6802)**

Conversions

Conversions Part 1

Format	Color
Hex	A38A70
RGB	163, 138, 112
RGB Percent	64%, 54%, 44%
CMY	0.3608, 0.4588, 0.5608
CMYK	0.00, 0.15, 0.31, 0.36
HSL	31°, 22%, 54%
HSV	31°, 31%, 64%
XYZ	27.1174, 27.1334, 19.1373
YIQ	142.5110, 23.2460, -2.7860

Conversions

Conversions Part 2

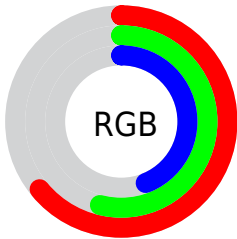
Format	Color
R_{YB}	161, 163, 112
Decimal	10717808
CIE _{Lab}	59.10, 5.46, 17.45
CIE _{LCh}	59, 18.284, 72.621
Yxy	27.1346, 0.3695, 0.3697
Android (android.graphics.Color)	4288907888 (0xFFA38A70)
YUV	142.5110, -15.0419, 17.9689
Hunter-Lab	52.0897, 1.7684, 14.6802

Details

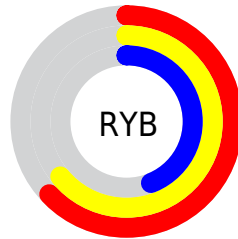
The HunterLab color $52.0897, 1.7684, 14.6802$ is a dark color, and the websafe version is hex 999966 . A complement of this color would be $48.9691, -4.6334, -11.8601$, and the grayscale version is $52.2666, -2.7888, 2.8397$.

A 20% lighter version of the original color is $74.1633, 1.4959, 17.6470$, and $32.6567, 2.1320, 11.3539$ is the 20% darker color. If you saturate the color by 10%, you get $49.5932, 3.8653, 17.4828$, and if you desaturate by 10%, it is $54.6889, -0.0783, 11.4445$.

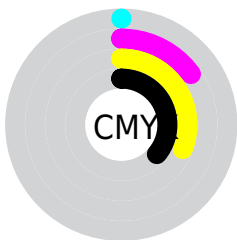
Distribution



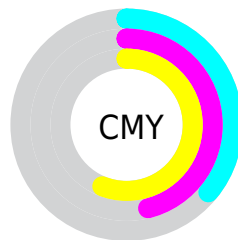
- Red (64%)
- Green (54%)
- Blue (44%)



- Red (63%)
- Yellow (64%)
- Blue (44%)



- Cyan (0%)
- Magenta (15%)
- Yellow (31%)
- Black (36%)



- Cyan (36%)
- Magenta (46%)
- Yellow (56%)

Brightness & Saturation Gradients

These gradients show how the HunterLab color 52.0897, 1.7684, 14.6802 changes by changing the brightness by 10 percent. The first figure shows a shift by +10% for each color and the second figure -10%.

Similar to the brightness gradients but the following saturation gradients show a change of the HunterLab color 52.0897, 1.7684, 14.6802 by changing the saturation by 10% instead.

■ 52.0897, 1.7684,
14.6802

■ 52.0897, 1.7684,
14.6802

169.7964, -2.3860,
28.1899

■ 42.0409, 2.0006,
13.0804

■ 74.2292, 1.1361,
17.7690

■ 32.7360, 2.1716,
11.4190

■ 86.2401, 0.7493,
19.2784

■ 24.2415, 2.2697,
9.6676

■ 98.8368, 0.3196,
20.7743

■ 16.6437, 2.2806,
7.7779

■ 111.9934, -0.1500,
22.2617

■ 10.0645, 2.1810,
7.0451

125.6869, -0.6574,
23.7442

0.0000, INF, NaN

0.0000, NaN, NaN

139.8970, -1.2002,

25.2250

0.0000, NaN, NaN

154.6056, -1.7770,
26.7063

0.0000, NaN, NaN

■ 52.0897, 1.7684,
14.6802

■ 52.0897, 1.7684,
14.6802

■ 49.5932, 3.8653,
17.4828

■ 54.6889, -0.0783,
11.4445

■ 47.2043, 6.2298,
19.8086

■ 57.3794, -1.6839,
7.8137

■ 44.9328, 8.8674,
21.6178

■ 60.1556, -3.0665,
3.8258

■ 42.7880, 11.7776,
22.8745

■ 63.0108, -4.2423,
-0.4852

■ 40.7790, 14.9487,
23.5545

■ 65.9394, -5.2275,
-5.0886

■ 38.9139, 18.3528,
23.6559

■ 68.9361, -6.0373,
-9.9571

■ 37.4030, 21.4298,
23.4227

■ 71.9962, -6.6861,
-15.0666

■ 75.1156, -7.1872,
-20.3958

■ 78.1366, -8.4034,
-23.7880

Harmonies

Analogous

The Analogous color harmony consists of three colors that are next to each other on the color wheel.



52.0909, 8.7016, 11.5889



52.0897, 1.7684, 14.6802



52.0909, -6.0142, 14.9092

Triad

The Triadic color harmony groups three colors that are evenly spaced from another and form a triangle on the color wheel.



52.0909, 1.7666, 14.6809



52.0909, -16.6050, -0.3743



52.0909, 7.7511, -8.7740

Complementary

The Complementary color scheme is a pair of colors which are on the opposite of each other on the color wheel.



52.0897, 1.7684, 14.6802



48.9691, -4.6334, -11.8601

Split Complementary

Split-complementary colors differ from the complementary color scheme. The scheme consists of three colors, the original color and two neighbors of the complement color.



52.0909, 0.5305, -13.0694



52.0897, 1.7684, 14.6802



52.0909, -13.3501, -7.7627

Square

The Square scheme is like the rectangle color scheme, but the four colors are evenly spaced on the color wheel.



52.0909, 1.7666, 14.6809



52.0909, -16.3174, 6.9135



52.0909, -7.1801, -12.6742



52.0909, 12.2937, -1.6015

Rectangle

The Rectangle color scheme consists of four colors that form a rectangle on the color wheel.



52.0897, 1.7684, 14.6802



52.0909, -10.6118, 13.4634



52.0909, -7.1801, -12.6742



52.0909, 5.5390, -10.6465

Sweetspot

The Sweet Spot groups the original color and five complimentary colors.



52.0909, 1.7666, 14.6809



77.5668, -2.6701, 9.3632



46.0388, 18.1058, -2.0361



36.5168, -1.1361, 4.7797



90.9709, -4.8540, 4.9426



38.3822, -2.0480, 2.0854

Same Dimension

The Same Dimension uses a secret algorithm to generate beautiful new colors.



52.0909, 1.7666, 14.6809



67.2181, 4.4138, 22.4867



59.2882, -10.0420, 21.0272



27.6678, -0.9459, 3.3601



33.1117, 18.5773, 20.7285



5.6985, 0.8483, 3.5262

Inverse Universe

The Inverse Universe completely reimagines the original color for something new.



48.9691, -4.6334, -11.8601



62.1046, -5.9896, -21.0800



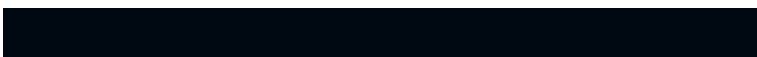
42.0450, 7.4562, -22.8241



27.2145, -1.8852, -0.4813



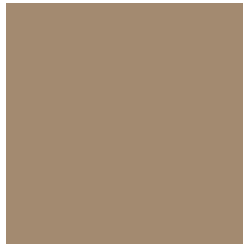
25.6753, 6.5591, -46.2511



4.8281, -0.9470, -3.9904

Previews

White Background



This preview shows how the HunterLab color 52.0897, 1.7684, 14.6802 looks on a white background.

Color Contrast Check

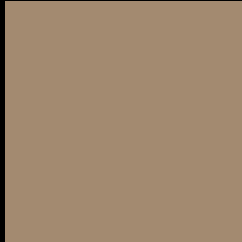
Large Text (above 18pt) WCAG AA ✓ Pass

Any Text WCAG AA × Fail

Large Text (above 18pt) WCAG AAA × Fail

Any Text WCAG AAA × Fail

Black Background



This preview shows how the HunterLab color 52.0897, 1.7684, 14.6802 looks on a black background.

Color Contrast Check

Large Text (above 18pt) WCAG AA ✓ Pass

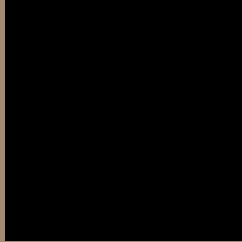
Any Text WCAG AA ✓ Pass

Large Text (above 18pt) WCAG AAA ✓ Pass

Any Text WCAG AAA × Fail

If you want to check with other color combinations, try the [Color Contrast Checker](#).

HunterLab 52.0897, 1.7684, 14.6802 Background



This preview shows how black text looks on a background with the HunterLab color 52.0897, 1.7684, 14.6802.



This preview shows how white text looks on a background with the HunterLab color 52.0897, 1.7684,

Color Blindness Simulation

Color vision deficiency is a very complex topic, and I could not describe the different causes any better than Wikipedia does, so if you want to learn more, you should check out their [article about color blindness](#).

Dichromacy



Original Color

52.0897, 1.7684, 14.6802

Protanopia

52.0963, -3.8899, 13.9155

Deuteranopia

52.1231, 3.2901, 14.7386



Tritanopia

52.2296, 9.4021, 2.3959

Trichromacy



Original Color

52.0897, 1.7684, 14.6802

Protanomaly

52.1638, -2.2378, 14.3468

Deuteranomaly

52.0197, 2.9422, 14.6342

Tritanomaly

52.0585, 6.8070, 7.3352

Monochromacy



Original Color

52.0897, 1.7684, 14.6802

Achromatopsia

52.4097, -2.7964, 2.8475

Achromatomaly

52.1534, -1.3656, 7.2958

CSS Examples

Text

The CSS property to change the color of the text to HunterLab 52.0897, 1.7684, 14.6802 is called "color". The color property can be set on classes, ids or directly on the HTML element.

This example shows how text in the color `rgb(163, 138, 112)` looks like.

```
.text, #text, p{  
    color:rgb(163, 138, 112)  
}
```

If you want to add a text shadow in that color use the text-shadow property, you can generate a text shadow directly with our [CSS Text Shadow Generator](#).

Here you see how black text with a 4 pixel rgb(163, 138, 112) colored shadow looks like.

```
.shadow{ text-shadow: 4px 4px 2px rgb(163, 138, 112) }
```

Border

The CSS property to change the border of an element to HunterLab 52.0897, 1.7684, 14.6802 is called "border". The border property can be set on classes, ids or directly on the HTML element.

This example shows the color as border, it can be applied via the CSS property "border" or "border-color".

```
.border, #border, table{ border:4px solid rgb(163, 138, 112) }
```


If only the border color should be changed use the property `border-color`.

```
.border{ border-color:rgb(163, 138, 112) }
```

If you want to add a box shadow in that color use:

Here you see how a box with a 4 pixel `rgb(163, 138, 112)` colored shadow looks like.

```
.boxshadow{ -moz-box-shadow:4px 4px 4px  
4px rgb(163, 138, 112); -webkit-box-  
shadow:4px 4px 4px 4px rgb(163, 138, 112);  
box-shadow:4px 4px 4px 4px rgb(163, 138,  
112) }
```

Background

The CSS property to change the background color of an element to HunterLab 52.0897, 1.7684, 14.6802 is called "background". The background property can be set on classes, ids or directly on the HTML element.

```
.background, #background, body{  
background: rgb(163, 138, 112) }
```

If only the background color should be changed can be used:

```
.background{ background-color: rgb(163,  
138, 112) }
```

This example shows the color as background, it is applied via the CSS property "background".

To optimize and compress your CSS code, you can use our [online CSS compressor and optimizer](#) based on csstidy. If you want to create a linear or radial gradient as background or border, check our [CSS Gradient Generator](#).

Hey! You found this booklet interesting? Support Converting Colors with the new Membership Option!

The pro membership hides all ads, plus gives you double the colors in the color bucket, and more awesome pro features!

[Learn more, Memberships starting at \\$2.50/m!](#)

**Follow me
on Twitter!**

@ConvertingColor