

Converting Colors

HunterLab(52.0072, 10.0484,
22.8929)

Have a look what the booklet for
HunterLab(52.0072, 10.0484,
22.8929) contains.

HunterLab(52.0072, 10.0484, 22.8929)	3
<i>Conversions</i>	4
<i>Details</i>	6
<i>Harmonies</i>	12
<i>Previews</i>	24
<i>Color Blindness Simulation</i>	28
<i>CSS Examples</i>	31

Color

**HunterLab(52.0072, 10.0484,
22.8929)**

Conversions

Conversions Part 1

Format	Color
Hex	B88353
RGB	184, 131, 83
RGB Percent	72%, 51%, 33%
CMY	0.2784, 0.4863, 0.6745
CMYK	0.00, 0.29, 0.55, 0.28
HSL	29°, 42%, 52%
HSV	29°, 55%, 72%
XYZ	29.4448, 27.0475, 11.8524
YIQ	141.3750, 46.9960, -3.6920

Conversions

Conversions Part 2

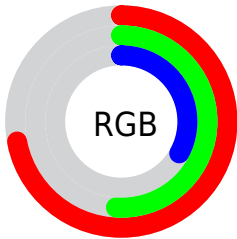
Format	Color
RYB	184, 174, 83
Decimal	12092243
CIELab	59.02, 14.96, 33.85
CIELCh	59, 37.007, 66.153
Yxy	27.0488, 0.4308, 0.3958
Android (android.graphics.Color)	4290282323 (0xFFB88353)
YUV	141.3750, -28.7789, 37.3821
Hunter-Lab	52.0072, 10.0484, 22.8929

Details

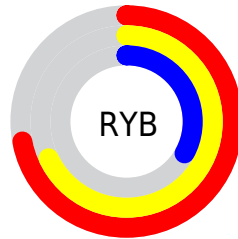
The HunterLab color **52.0072, 10.0484, 22.8929** is a dark color, and the websafe version is hex **CC9966**. A complement of this color would be **47.8613, -5.3523, -26.7775**, and the grayscale version is **51.8587, -2.7670, 2.8176**.

A 20% lighter version of the original color is **74.0619, 10.1610, 28.0501**, and **32.7890, 9.2409, 17.3481** is the 20% darker color. If you saturate the color by 10%, you get **49.3228, 13.5327, 24.6903**, and if you desaturate by 10%, it is **54.8519, 6.8767, 20.5000**.

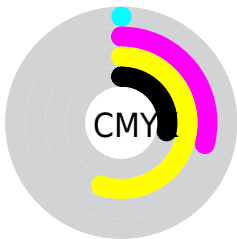
Distribution



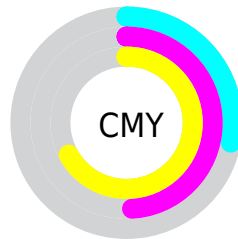
- Red (72%)
- Green (51%)
- Blue (33%)



- Red (72%)
- Yellow (68%)
- Blue (33%)



- Cyan (0%)
- Magenta (29%)
- Yellow (55%)
- Black (28%)



- Cyan (28%)
- Magenta (49%)
- Yellow (67%)

Brightness & Saturation Gradients

These gradients show how the HunterLab color 52.0072, 10.0484, 22.8929 changes by changing the brightness by 10 percent. The first figure shows a shift by +10% for each color and the second figure -10%.

Similar to the brightness gradients but the following saturation gradients show a change of the HunterLab color 52.0072, 10.0484, 22.8929 by changing the saturation by 10% instead.

■ 52.0072, 10.0484,
22.8929

■ 52.0072, 10.0484,
22.8929

169.6742, 9.4881,
43.8629

■ 41.9641, 9.7810,
20.1597

■ 74.1365, 10.3346,
27.9934

■ 32.6654, 9.4203,
17.2548

■ 86.1426, 10.3751,
30.4092

■ 24.1776, 8.9473,
14.1252

■ 98.7348, 10.3549,
32.7585

■ 16.5874, 8.3393,
11.6112

■ 111.8870, 10.2787,
35.0538

■ 10.0168, 7.5651,
7.0118

■ 125.5763, 10.1507,
37.3049

0.0000, INF, NaN

0.0000, NaN, NaN

139.7824, 9.9744,

39.5194

0.0000, NaN, NaN

154.4872, 9.7527,
41.7037

0.0000, NaN, NaN

■ 52.0072, 10.0484,
22.8929

■ 52.0072, 10.0484,
22.8929

■ 49.3228, 13.5327,
24.6903

■ 54.8519, 6.8767,
20.5000

■ 46.8086, 17.3282,
25.8462

■ 57.8400, 4.0214,
17.5611

■ 44.4792, 21.4045,
26.3347

■ 60.9606, 1.4678,
14.1291

■ 42.3466, 25.7069,
26.1658

■ 64.2025, -0.8011,
10.2541

■ 41.3284, 27.9300,
25.9553

■ 67.5554, -2.8047,
5.9824

■ 71.0104, -4.5633,
1.3553

■ 74.5594, -6.0969,
-3.5904

■ 78.1951, -7.4247,
-8.8224

■ 81.9111, -8.5647,
-14.3127

Harmonies

Analogous

The Analogous color harmony consists of three colors that are next to each other on the color wheel.



52.0085, 24.0140, 17.1243



52.0072, 10.0484, 22.8929



52.0085, -5.9853, 24.1060

Triad

The Triadic color harmony groups three colors that are evenly spaced from another and form a triangle on the color wheel.



52.0085, 10.0459, 22.8935



52.0085, -29.6012, -0.3536



52.0085, 16.3284, -26.2286

Complementary

The Complementary color scheme is a pair of colors which are on the opposite of each other on the color wheel.



52.0072, 10.0484, 22.8929



47.8613, -5.3523, -26.7775

Split Complementary

Split-complementary colors differ from the complementary color scheme. The scheme consists of three colors, the original color and two neighbors of the complement color.



52.0085, 0.5093, -34.7458



52.0072, 10.0484, 22.8929



52.0085, -25.0487, -17.2018

Square

The Square scheme is like the rectangle color scheme, but the four colors are evenly spaced on the color wheel.



52.0085, 10.0459, 22.8935



52.0085, -27.6874, 13.1866



52.0085, -14.4681, -31.0272



52.0085, 27.9327, -10.2202

Rectangle

The Rectangle color scheme consists of four colors that form a rectangle on the color wheel.



52.0072, 10.0484, 22.8929



52.0085, -15.4687, 22.6246



52.0085, -14.4681, -31.0272



52.0085, 11.2603, -30.2500

Sweetspot

The Sweet Spot groups the original color and five complimentary colors.



52.0085, 10.0459, 22.8935



85.8315, -0.6797, 14.5578



42.6373, 39.9531, -5.8687



39.4351, -0.0356, 7.2669



96.5975, -5.1542, 5.2483



43.2801, -2.3093, 2.3515

Same Dimension

The Same Dimension uses a secret algorithm to generate beautiful new colors.



52.0085, 10.0459, 22.8935



65.6380, 19.3168, 33.6635



66.1163, -13.7112, 33.1615



31.1406, -0.9172, 3.7375



34.5131, 22.7029, 21.6642



7.3755, 2.3025, 4.5851

Inverse Universe

The Inverse Universe completely reimagines the original color for something new.



47.8613, -5.3523, -26.7775



58.9729, -4.8723, -46.3931



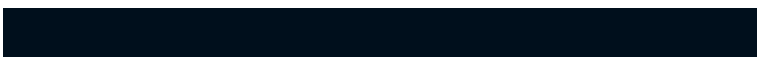
34.6616, 19.5573, -55.8675



30.7869, -2.2723, -0.4802



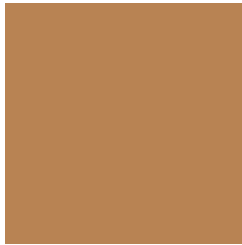
28.9176, 4.6479, -46.1781



6.4639, -0.8990, -6.1385

Previews

White Background



This preview shows how the HunterLab color 52.0072, 10.0484, 22.8929 looks on a white background.

Color Contrast Check

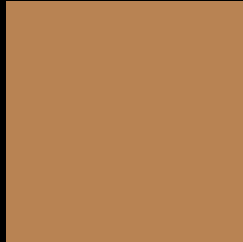
Large Text (above 18pt) WCAG AA ✓ Pass

Any Text WCAG AA × Fail

Large Text (above 18pt) WCAG AAA × Fail

Any Text WCAG AAA × Fail

Black Background



This preview shows how the HunterLab color 52.0072, 10.0484, 22.8929 looks on a black background.

Color Contrast Check

Large Text (above 18pt) WCAG AA ✓ Pass

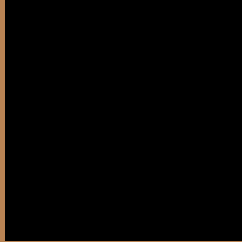
Any Text WCAG AA ✓ Pass

Large Text (above 18pt) WCAG AAA ✓ Pass

Any Text WCAG AAA × Fail

If you want to check with other color combinations, try the [Color Contrast Checker](#).

HunterLab 52.0072, 10.0484, 22.8929 Background



This preview shows how black text looks on a background with the HunterLab color 52.0072, 10.0484, 22.8929.



This preview shows how white text looks on a background with the HunterLab color 52.0072, 10.0484,

Color Blindness Simulation

Color vision deficiency is a very complex topic, and I could not describe the different causes any better than Wikipedia does, so if you want to learn more, you should check out their [article about color blindness](#).

Dichromacy



Original Color

52.0072, 10.0484, 22.8929

Protanopia

51.9641, -5.3668, 21.6381

Deuteranopia

52.0593, 3.3958, 23.0468



Tritanopia

52.0383, 19.9872, 6.7184

Trichromacy



Original Color

52.0072, 10.0484, 22.8929

Protanomaly

51.9190, 0.2296, 21.9422

Deuteranomaly

51.9678, 5.8481, 23.0173

Tritanomaly

51.9436, 16.2374, 13.7780

Monochromacy



Original Color

52.0072, 10.0484, 22.8929

Achromatopsia

51.6097, -2.7538, 2.8041

Achromatomaly

51.3960, 1.1910, 11.1923

CSS Examples

Text

The CSS property to change the color of the text to HunterLab 52.0072, 10.0484, 22.8929 is called "color". The color property can be set on classes, ids or directly on the HTML element.

This example shows how text in the color `rgb(184, 131, 83)` looks like.

```
.text, #text, p{  
    color:rgb(184, 131, 83)  
}
```

If you want to add a text shadow in that color use the text-shadow property, you can generate a text shadow directly with our [CSS Text Shadow Generator](#).

Here you see how black text with a 4 pixel rgb(184, 131, 83) colored shadow looks like.

```
.shadow{ text-shadow: 4px 4px 2px rgb(184, 131, 83) }
```

Border

The CSS property to change the border of an element to HunterLab 52.0072, 10.0484, 22.8929 is called "border". The border property can be set on classes, ids or directly on the HTML element.

This example shows the color as border, it can be applied via the CSS property "border" or "border-color".

```
.border, #border, table{ border:4px solid rgb(184, 131, 83) }
```


If only the border color should be changed use the property border-color.

```
.border{ border-color:rgb(184, 131, 83) }
```

If you want to add a box shadow in that color use:

Here you see how a box with a 4 pixel rgb(184, 131, 83) colored shadow looks like.

```
.boxshadow{ -moz-box-shadow:4px 4px 4px  
4px rgb(184, 131, 83); -webkit-box-  
shadow:4px 4px 4px 4px rgb(184, 131, 83);  
box-shadow:4px 4px 4px 4px rgb(184, 131,  
83) }
```

Background

The CSS property to change the background color of an element to HunterLab 52.0072, 10.0484, 22.8929 is called "background". The background property can be set on classes, ids or directly on the HTML element.

```
.background, #background, body{  
background: rgb(184, 131, 83) }
```

If only the background color should be changed can be used:

```
.background{ background-color: rgb(184,  
131, 83) }
```

This example shows the color as background, it is applied via the CSS property "background".

To optimize and compress your CSS code, you can use our [online CSS compressor and optimizer](#) based on csstidy. If you want to create a linear or radial gradient as background or border, check our [CSS Gradient Generator](#).

Hey! You found this booklet interesting? Support Converting Colors with the new Membership Option!

The pro membership hides all ads, plus gives you double the colors in the color bucket, and more awesome pro features!

[Learn more, Memberships starting at \\$2.50/m!](#)

**Follow me
on Twitter!**

@ConvertingColor