

Converting Colors

HunterLab(52.0811, 9.8517,
5.4112)

Have a look what the booklet for
HunterLab(52.0811, 9.8517, 5.4112)
contains.

HunterLab(52.0838, 9.8877, 5.3255)	3
<i>Conversions</i>	4
<i>Details</i>	6
<i>Harmonies</i>	12
<i>Previews</i>	24
<i>Color Blindness Simulation</i>	28
<i>CSS Examples</i>	31

Color

**HunterLab(52.0838, 9.8877,
5.3255)**

Conversions

Conversions Part 1

Format	Color
Hex	AA8589
RGB	170, 133, 137
RGB Percent	67%, 52%, 54%
CMY	0.3333, 0.4784, 0.4627
CMYK	0.00, 0.22, 0.19, 0.33
HSL	354°, 18%, 59%
HSV	354°, 22%, 67%
XYZ	29.4804, 27.1272, 27.3492
YIQ	144.5190, 20.7680, 9.0880

Conversions

Conversions Part 2

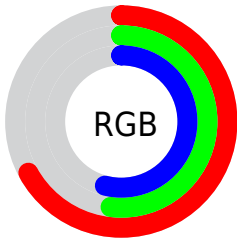
Format	Color
R_{YB}	170, 133, 137
Decimal	11175305
CIE _{Lab}	59.09, 14.78, 3.28
CIE _{LCh}	59, 15.141, 12.511
Yxy	27.1285, 0.3511, 0.3231
Android (android.graphics.Color)	4289365385 (0xFFAA8589)
YUV	144.5190, -3.7069, 22.3468
Hunter-Lab	52.0838, 9.8877, 5.3255

Details

The HunterLab color $52.0838, 9.8877, 5.3255$ is a dark color, and the websafe version is hex $CC9999$. A complement of this color would be $60.4068, -14.3100, 1.5607$, and the grayscale version is $53.0281, -2.8294, 2.8811$.

A 20% lighter version of the original color is $74.1649, 10.3287, 6.9362$, and $32.6444, 9.3070, 3.9015$ is the 20% darker color. If you saturate the color by 10%, you get $47.3698, 16.3063, 6.4949$, and if you desaturate by 10%, it is $57.1249, 3.6652, 4.3593$.

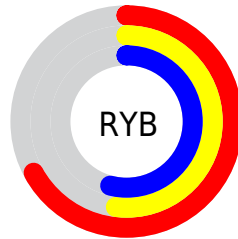
Distribution



Red (67%)

Green (52%)

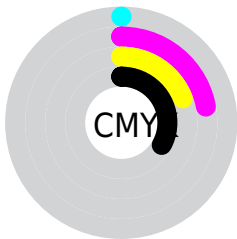
Blue (54%)



Red (67%)

Yellow (52%)

Blue (54%)

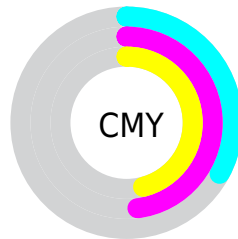


Cyan (0%)

Magenta (22%)

Yellow (19%)

Black (33%)



Cyan (33%)

Magenta (48%)

Yellow (46%)

Brightness & Saturation Gradients

These gradients show how the HunterLab color 52.0838, 9.8877, 5.3255 changes by changing the brightness by 10 percent. The first figure shows a shift by +10% for each color and the second figure -10%.

Similar to the brightness gradients but the following saturation gradients show a change of the HunterLab color 52.0838, 9.8877, 5.3255 by changing the saturation by 10% instead.

■ 52.0838, 9.8877,
5.3255

■ 52.0838, 9.8877,
5.3255

169.7877, 9.2577,
12.9876

■ 42.0354, 9.6307,
4.5985

■ 74.2226, 10.1566,
6.8587

■ 32.7309, 9.2804,
3.8958

■ 86.2331, 10.1887,
7.6626

■ 24.2369, 8.8186,
3.2172

■ 98.8295, 10.1604,
8.4913

■ 16.6397, 8.2225,
2.5597

111.9857, 10.0766,
9.3441

■ 10.0610, 7.4610,
1.9349

125.6789, 9.9412,
10.2206

0.0000, INF, NaN

0.0000, NaN, NaN

139.8888, 9.7577,

11.1203

0.0000, NaN, NaN

154.5972, 9.5290,
12.0428

0.0000, NaN, NaN

■ 52.0838, 9.8877,
5.3255

■ 52.0838, 9.8877,
5.3255

■ 47.3698, 16.3063,
6.4949

■ 57.1249, 3.6652,
4.3593

■ 43.0409, 22.8702,
7.8844

■ 62.4398, -2.3449,
3.5679

■ 39.1733, 29.4411,
9.4983

■ 67.9901, -8.1565,
2.9269

■ 35.8522, 35.7626,
11.3058

■ 73.7446, -13.7916,
2.4132

■ 33.1651, 41.4344,
13.2226

■ 79.6781, -19.2749,
2.0068

■ 31.1828, 45.9561,
15.1007

■ 85.7704, -24.6301,
1.6913

■ 29.9307, 48.8874,
16.7507

■ 92.0052, -29.8790,
1.4529

■ 29.3103, 50.3480,
17.7528

■ 93.4270, -29.0159,
-2.9780

Harmonies

Analogous

The Analogous color harmony consists of three colors that are next to each other on the color wheel.



52.0850, 9.5814, -0.8361



52.0838, 9.8877, 5.3255



52.0850, 6.6783, 10.1932

Triad

The Triadic color harmony groups three colors that are evenly spaced from another and form a triangle on the color wheel.



52.0850, 9.8859, 5.3264



52.0850, -10.8995, 10.8029



52.0850, -6.4566, -9.7179

Complementary

The Complementary color scheme is a pair of colors which are on the opposite of each other on the color wheel.



52.0838, 9.8877, 5.3255



60.4068, -14.3100, 1.5607

Split Complementary

Split-complementary colors differ from the complementary color scheme. The scheme consists of three colors, the original color and two neighbors of the complement color.



52.0850, -11.6117, -5.7828



52.0838, 9.8877, 5.3255



52.0850, -14.0898, 6.2572

Square

The Square scheme is like the rectangle color scheme, but the four colors are evenly spaced on the color wheel.



52.0850, 9.8859, 5.3264



52.0850, -5.4412, 13.0869



52.0850, -14.3440, 0.2144



52.0850, -0.0682, -10.0463

Rectangle

The Rectangle color scheme consists of four colors that form a rectangle on the color wheel.



52.0838, 9.8877, 5.3255



52.0850, 3.0666, 12.2519



52.0850, -14.3440, 0.2144



52.0850, -8.3832, -8.7529

Sweetspot

The Sweet Spot groups the original color and five complimentary colors.



52.0850, 9.8859, 5.3264



80.2228, 1.1496, 5.3505



52.6796, 13.8800, -10.0986



37.6914, 0.7616, 2.5558



93.2148, -4.9737, 5.0645



40.3295, -2.1519, 2.1912

Same Dimension

The Same Dimension uses a secret algorithm to generate beautiful new colors.



52.0850, 9.8859, 5.3264



67.1080, 17.3581, 7.8801



55.8256, 2.3032, 10.8708



27.4864, 1.0129, 1.9513



25.1474, 43.2142, 15.0985



3.9722, 6.9241, 1.6242

Inverse Universe

The Inverse Universe completely reimagines the original color for something new.



52.0850, 9.8859, 5.3264



67.1080, 17.3581, 7.8801



56.2185, -6.9796, -5.5887



27.4864, 1.0129, 1.9513



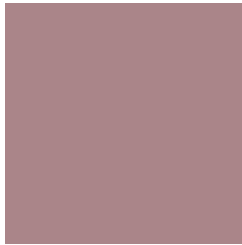
25.1474, 43.2142, 15.0985



3.9722, 6.9241, 1.6242

Previews

White Background



This preview shows how the HunterLab color 52.0838, 9.8877, 5.3255 looks on a white background.

Color Contrast Check

Large Text (above 18pt) WCAG AA ✓ Pass

Any Text WCAG AA × Fail

Large Text (above 18pt) WCAG AAA × Fail

Any Text WCAG AAA × Fail

Black Background



This preview shows how the HunterLab color 52.0838, 9.8877, 5.3255 looks on a black background.

Color Contrast Check

Large Text (above 18pt) WCAG AA ✓ Pass

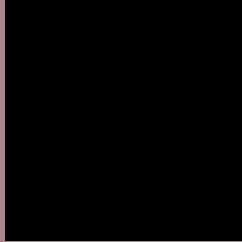
Any Text WCAG AA ✓ Pass

Large Text (above 18pt) WCAG AAA ✓ Pass

Any Text WCAG AAA × Fail

If you want to check with other color combinations, try the [Color Contrast Checker](#).

HunterLab 52.0838, 9.8877, 5.3255 Background



This preview shows how black text looks on a background with the HunterLab color 52.0838, 9.8877, 5.3255.



This preview shows how white text looks on a background with the HunterLab color 52.0838, 9.8877,

Color Blindness Simulation

Color vision deficiency is a very complex topic, and I could not describe the different causes any better than Wikipedia does, so if you want to learn more, you should check out their [article about color blindness](#).

Dichromacy



Original Color

52.0838, 9.8877, 5.3255

Protanopia

52.2673, -1.8802, 3.1443

Deuteranopia

52.2738, 3.5541, 5.8542



Tritanopia

52.0706, 11.4720, 3.1472

Trichromacy



Original Color

52.0838, 9.8877, 5.3255

Protanomaly

52.1811, 2.0451, 3.9985

Deuteranomaly

52.1272, 5.8649, 5.7300

Tritanomaly

52.0134, 11.1741, 3.9640

Monochromacy



Original Color

52.0838, 9.8877, 5.3255

Achromatopsia

53.2117, -2.8392, 2.8911

Achromatomaly

52.7947, 1.3779, 3.8163

CSS Examples

Text

The CSS property to change the color of the text to HunterLab 52.0838, 9.8877, 5.3255 is called "color". The color property can be set on classes, ids or directly on the HTML element.

This example shows how text in the color `rgb(170, 133, 137)` looks like.

```
.text, #text, p{  
    color:rgb(170, 133, 137)  
}
```

If you want to add a text shadow in that color use the text-shadow property, you can generate a text shadow directly with our [CSS Text Shadow Generator](#).

Here you see how black text with a 4 pixel rgb(170, 133, 137) colored shadow looks like.

```
.shadow{ text-shadow: 4px 4px 2px rgb(170, 133, 137) }
```

Border

The CSS property to change the border of an element to HunterLab 52.0838, 9.8877, 5.3255 is called "border". The border property can be set on classes, ids or directly on the HTML element.

This example shows the color as border, it can be applied via the CSS property "border" or "border-color".

```
.border, #border, table{ border:4px solid rgb(170, 133, 137) }
```


If only the border color should be changed use the property `border-color`.

```
.border{ border-color:rgb(170, 133, 137) }
```

If you want to add a box shadow in that color use:

Here you see how a box with a 4 pixel `rgb(170, 133, 137)` colored shadow looks like.

```
.boxshadow{ -moz-box-shadow:4px 4px 4px  
4px rgb(170, 133, 137); -webkit-box-  
shadow:4px 4px 4px 4px rgb(170, 133, 137);  
box-shadow:4px 4px 4px 4px rgb(170, 133,  
137) }
```

Background

The CSS property to change the background color of an element to HunterLab 52.0838, 9.8877, 5.3255 is called "background". The background property can be set on classes, ids or directly on the HTML element.

```
.background, #background, body{  
background: rgb(170, 133, 137) }
```

If only the background color should be changed can be used:

```
.background{ background-color: rgb(170,  
133, 137) }
```

This example shows the color as background, it is applied via the CSS property "background".

To optimize and compress your CSS code, you can use our [online CSS compressor and optimizer](#) based on csstidy. If you want to create a linear or radial gradient as background or border, check our [CSS Gradient Generator](#).

Hey! You found this booklet interesting? Support Converting Colors with the new Membership Option!

The pro membership hides all ads, plus gives you double the colors in the color bucket, and more awesome pro features!

[Learn more, Memberships starting at \\$2.50/m!](#)

**Follow me
on Twitter!**

@ConvertingColor