

Converting Colors

HunterLab(52.1407, 35.5482,
-0.1630)

Have a look what the booklet for
HunterLab(52.1407, 35.5482,
-0.1630) contains.

HunterLab(52.2280, 35.5423, 0.0492)	3
<i>Conversions</i>	4
<i>Details</i>	6
<i>Harmonies</i>	12
<i>Previews</i>	24
<i>Color Blindness Simulation</i>	28
<i>CSS Examples</i>	31

Color

**HunterLab(52.2280, 35.5423,
0.0492)**

Conversions

Conversions Part 1

Format	Color
Hex	CF7196
RGB	207, 113, 150
RGB Percent	81%, 44%, 59%
CMY	0.1882, 0.5568, 0.4118
CMYK	0.00, 0.45, 0.28, 0.19
HSL	336°, 49%, 63%
HSV	336°, 45%, 81%
XYZ	37.1422, 27.2776, 32.1617
YIQ	145.3240, 44.1470, 31.4350

Conversions

Conversions Part 2

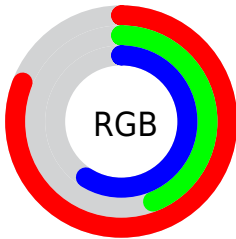
Format	Color
R _Y B	207, 113, 150
Decimal	13595030
CIE Lab	59.23, 41.28, -3.49
CIE LCh	59, 41.425, 355.172
Yxy	27.2790, 0.3846, 0.2824
Android (android.graphics.Color)	4291785110 (0xFFCF7196)
YUV	145.3240, 2.3053, 54.0899
Hunter-Lab	52.2280, 35.5423, 0.0492

Details

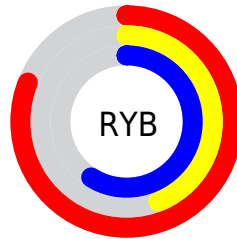
The HunterLab color $52.2280, 35.5423, 0.0492$ is a light color, and the websafe version is hex `CC6699`. A complement of this color would be $71.4418, -34.1268, 11.8610$, and the grayscale version is $53.3216, -2.8451, 2.8971$.

A 20% lighter version of the original color is $72.9774, 33.6197, -0.8553$, and $32.7450, 32.6333, -0.6250$ is the 20% darker color. If you saturate the color by 10%, you get $47.7408, 44.0766, 0.5873$, and if you desaturate by 10%, it is $57.3260, 26.6825, 0.1703$.

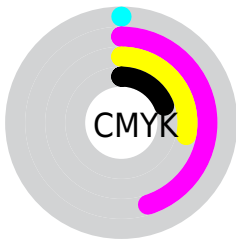
Distribution



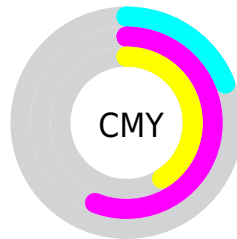
- Red (81%)
- Green (44%)
- Blue (59%)



- Red (81%)
- Yellow (44%)
- Blue (59%)



- Cyan (0%)
- Magenta (45%)
- Yellow (28%)
- Black (19%)



- Cyan (19%)
- Magenta (56%)
- Yellow (41%)

Brightness & Saturation Gradients

These gradients show how the HunterLab color 52.2280, 35.5423, 0.0492 changes by changing the brightness by 10 percent. The first figure shows a shift by +10% for each color and the second figure -10%.

Similar to the brightness gradients but the following saturation gradients show a change of the HunterLab color 52.2280, 35.5423, 0.0492 by changing the saturation by 10% instead.

52.2280, 35.5423,
0.0492

52.2280, 35.5423,
0.0492

170.0016, 44.0319,
5.1748

42.1697, 34.1098,
-0.3156

74.3849, 38.0561,
0.9246

32.8545, 32.5572,
-0.6276

86.4038, 39.1588,
1.4254

24.3488, 30.8852,
-0.8785

99.0081, 40.1684,
1.9650

16.7384, 29.1278,
-1.0583

112.1719, 41.0915,
2.5410

10.1445, 27.4341,
-1.1519

125.8724, 41.9343,
3.1516

0.0000, INF, -NF

0.0000, NaN, NaN

140.0893, 42.7022,

3.7950

0.0000, NaN, NaN

154.8045, 43.4000,
4.4698

0.0000, NaN, NaN

■ 52.2280, 35.5423,
0.0492

■ 52.2280, 35.5423,
0.0492

■ 47.7408, 44.0766,
0.5873

■ 57.3260, 26.6825,
0.1703

■ 43.9628, 51.8524,
1.8784

■ 62.9366, 17.7821,
0.8334

■ 40.9906, 58.2772,
3.9610

■ 68.9802, 8.9881,
1.9347

■ 38.8850, 62.7414,
6.7571

■ 75.3908, 0.3673,
3.3861

■ 37.6348, 64.8803,
10.0410

■ 82.1151, -8.0616,
5.1182

■ 37.2379, 65.3855,
11.5474

■ 89.1104, -16.3049,
7.0769

■ 95.3681, -22.9503,
8.1375

■ 95.7675, -20.6927,
2.4405

■ 95.9195, -19.8361,
0.2787

Harmonies

Analogous

The Analogous color harmony consists of three colors that are next to each other on the color wheel.



52.2293, 28.1121, -19.1764



52.2280, 35.5423, 0.0492



52.2293, 31.6352, 14.8015

Triad

The Triadic color harmony groups three colors that are evenly spaced from another and form a triangle on the color wheel.



52.2293, 35.5396, 0.0504



52.2293, -16.4633, 24.4435



52.2293, -20.8037, -31.2344

Complementary

The Complementary color scheme is a pair of colors which are on the opposite of each other on the color wheel.



52.2280, 35.5423, 0.0492



71.4418, -34.1268, 11.8610

Split Complementary

Split-complementary colors differ from the complementary color scheme. The scheme consists of three colors, the original color and two neighbors of the complement color.



52.2293, -30.1077, -12.8485



52.2280, 35.5423, 0.0492



52.2293, -27.8449, 18.1321

Square

The Square scheme is like the rectangle color scheme, but the four colors are evenly spaced on the color wheel.



52.2293, 35.5396, 0.0504



52.2293, 0.0993, 25.8758



52.2293, -32.5039, 5.4894



52.2293, -5.6171, -40.6777

Rectangle

The Rectangle color scheme consists of four colors that form a rectangle on the color wheel.



52.2280, 35.5423, 0.0492



52.2293, 23.3719, 20.9567



52.2293, -32.5039, 5.4894



52.2293, -24.6390, -25.6497

Sweetspot

The Sweet Spot groups the original color and five complimentary colors.



52.2293, 35.5396, 0.0504



88.3080, 10.0140, 2.6548



49.7957, 33.3623, -39.0189



40.0569, 5.7471, 1.0627

0.0000, NaN, NaN



46.2646, -2.4686, 2.5136

Same Dimension

The Same Dimension uses a secret algorithm to generate beautiful new colors.



52.2293, 35.5396, 0.0504



60.8374, 55.0085, 0.6601



53.3634, 26.1053, 15.9796



34.4735, 1.7992, 1.3108



29.5871, 52.0079, 8.7385



7.1056, 12.6976, 0.4913

Inverse Universe

The Inverse Universe completely reimagines the original color for something new.



52.2293, 35.5396, 0.0504



60.8374, 55.0085, 0.6601



69.4420, -23.3920, -8.0212



34.4735, 1.7992, 1.3108



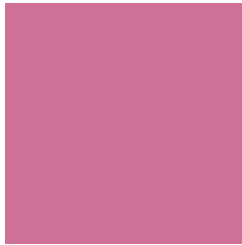
29.5871, 52.0079, 8.7385



7.1056, 12.6976, 0.4913

Previews

White Background



This preview shows how the HunterLab color 52.2280, 35.5423, 0.0492 looks on a white background.

Color Contrast Check

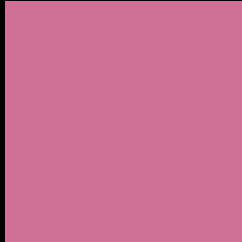
Large Text (above 18pt) WCAG AA ✓ Pass

Any Text WCAG AA × Fail

Large Text (above 18pt) WCAG AAA × Fail

Any Text WCAG AAA × Fail

Black Background



This preview shows how the HunterLab color 52.2280, 35.5423, 0.0492 looks on a black background.

Color Contrast Check

Large Text (above 18pt) WCAG AA ✓ Pass

Any Text WCAG AA ✓ Pass

Large Text (above 18pt) WCAG AAA ✓ Pass

Any Text WCAG AAA × Fail

If you want to check with other color combinations, try the [Color Contrast Checker](#).

HunterLab 52.2280, 35.5423, 0.0492 Background



This preview shows how black text looks on a background with the HunterLab color 52.2280, 35.5423, 0.0492.



This preview shows how white text looks on a background with the HunterLab color 52.2280, 35.5423,

0.0492.

Color Blindness Simulation

Color vision deficiency is a very complex topic, and I could not describe the different causes any better than Wikipedia does, so if you want to learn more, you should check out their [article about color blindness](#).

Dichromacy



Original Color

52.2280, 35.5423, 0.0492

Protanopia

52.5133, 0.6336, -9.4570

Deuteranopia

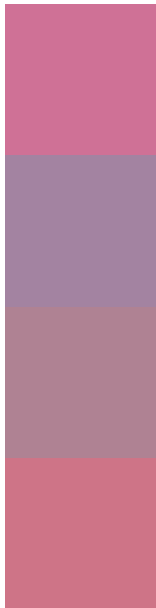
52.5438, 3.6149, 1.7549



Tritanopia

52.1614, 29.5306, 10.2223

Trichromacy



Original Color

52.2280, 35.5423, 0.0492

Protanomaly

51.5678, 12.4012, -6.7746

Deuteranomaly

52.1400, 14.6372, 0.9956

Tritanomaly

52.3086, 31.5542, 6.8038

Monochromacy



Original Color

52.2280, 35.5423, 0.0492

Achromatopsia

53.2117, -2.8392, 2.8911

Achromatomaly

52.1598, 10.7094, 0.9510

CSS Examples

Text

The CSS property to change the color of the text to HunterLab 52.2280, 35.5423, 0.0492 is called "color". The color property can be set on classes, ids or directly on the HTML element.

This example shows how text in the color `rgb(207, 113, 150)` looks like.

```
.text, #text, p{  
    color:rgb(207, 113, 150)  
}
```

If you want to add a text shadow in that color use the text-shadow property, you can generate a text shadow directly with our [CSS Text Shadow Generator](#).

Here you see how black text with a 4 pixel rgb(207, 113, 150) colored shadow looks like.

```
.shadow{ text-shadow: 4px 4px 2px rgb(207, 113, 150) }
```

Border

The CSS property to change the border of an element to HunterLab 52.2280, 35.5423, 0.0492 is called "border". The border property can be set on classes, ids or directly on the HTML element.

This example shows the color as border, it can be applied via the CSS property "border" or "border-color".

```
.border, #border, table{ border:4px solid rgb(207, 113, 150) }
```


If only the border color should be changed use the property `border-color`.

```
.border{ border-color:rgb(207, 113, 150) }
```

If you want to add a box shadow in that color use:

Here you see how a box with a 4 pixel `rgb(207, 113, 150)` colored shadow looks like.

```
.boxshadow{ -moz-box-shadow:4px 4px 4px  
4px rgb(207, 113, 150); -webkit-box-  
shadow:4px 4px 4px 4px rgb(207, 113, 150);  
box-shadow:4px 4px 4px 4px rgb(207, 113,  
150) }
```

Background

The CSS property to change the background color of an element to HunterLab 52.2280, 35.5423, 0.0492 is called "background". The background property can be set on classes, ids or directly on the HTML element.

```
.background, #background, body{  
background: rgb(207, 113, 150) }
```

If only the background color should be changed can be used:

```
.background{ background-color: rgb(207,  
113, 150) }
```

This example shows the color as background, it is applied via the CSS property "background".

To optimize and compress your CSS code, you can use our [online CSS compressor and optimizer](#) based on csstidy. If you want to create a linear or radial gradient as background or border, check our [CSS Gradient Generator](#).

Hey! You found this booklet interesting? Support Converting Colors with the new Membership Option!

The pro membership hides all ads, plus gives you double the colors in the color bucket, and more awesome pro features!

[Learn more, Memberships starting at \\$2.50/m!](#)

**Follow me
on Twitter!**

@ConvertingColor