

Converting Colors

HunterLab(52.1450, 52.8407,
-0.5726)

Have a look what the booklet for
HunterLab(52.1450, 52.8407,
-0.5726) contains.

HunterLab(52.2406, 52.6468, -0.6023)	3
<i>Conversions</i>	4
<i>Details</i>	6
<i>Harmonies</i>	12
<i>Previews</i>	24
<i>Color Blindness Simulation</i>	28
<i>CSS Examples</i>	31

Color

**HunterLab(52.2406, 52.6468,
-0.6023)**

Conversions

Conversions Part 1

Format	Color
Hex	E56098
RGB	229, 96, 152
RGB Percent	90%, 38%, 60%
CMY	0.1020, 0.6235, 0.4039
CMYK	0.00, 0.58, 0.34, 0.10
HSL	335°, 72%, 64%
HSV	335°, 58%, 90%
XYZ	42.1635, 27.2908, 32.7512
YIQ	142.1510, 61.2920, 45.6120

Conversions

Conversions Part 2

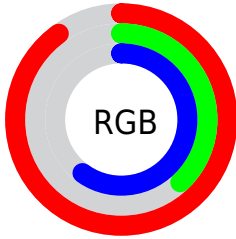
Format	Color
R _Y B	229, 96, 152
Decimal	15032472
CIE Lab	59.24, 57.01, -4.27
CIE LCh	59, 57.167, 355.712
Yxy	27.2922, 0.4125, 0.2670
Android (android.graphics.Color)	4293222552 (0xFFE56098)
YUV	142.1510, 4.8556, 76.1666
Hunter-Lab	52.2406, 52.6468, -0.6023

Details

The HunterLab color **52.2406, 52.6468, -0.6023** is a light color, and the websafe version is hex **FF6699**. A complement of this color would be **78.4496, -45.3911, 17.6633**, and the grayscale version is **52.0353, -2.7765, 2.8272**.

A 20% lighter version of the original color is **69.4066, 42.1279, -6.3758**, and **32.8767, 48.8170, -1.0903** is the 20% darker color. If you saturate the color by 10%, you get **48.2637, 61.0503, 0.9233**, and if you desaturate by 10%, it is **57.0577, 43.1619, -1.2044**.

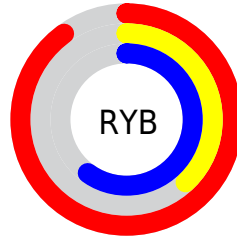
Distribution



Red (90%)

Green (38%)

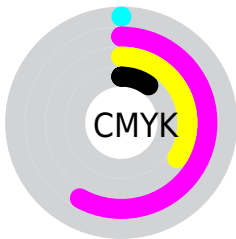
Blue (60%)



Red (90%)

Yellow (38%)

Blue (60%)

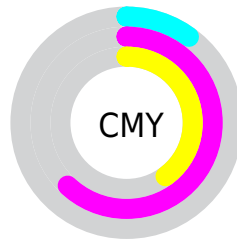


Cyan (0%)

Magenta (58%)

Yellow (34%)

Black (10%)



Cyan (10%)

Magenta (62%)

Yellow (40%)

Brightness & Saturation Gradients

These gradients show how the HunterLab color 52.2406, 52.6468, -0.6023 changes by changing the brightness by 10 percent. The first figure shows a shift by +10% for each color and the second figure -10%.

Similar to the brightness gradients but the following saturation gradients show a change of the HunterLab color 52.2406, 52.6468, -0.6023 by changing the saturation by 10% instead.

52.2406, 52.6468,
-0.6023

52.2406, 52.6468,
-0.6023

170.0203, 65.8717,
4.2400

42.1815, 50.6862,
-0.9276

74.3992, 56.2491,
0.2007

32.8654, 48.6442,
-1.1975

86.4188, 57.8961,
0.6679

24.3586, 46.5670,
-1.4033

99.0238, 59.4441,
1.1752

16.7470, 44.5971,
-1.5341

112.1883, 60.8980,
1.7202

10.1519, 43.1887,
-1.5741

125.8894, 62.2629,
2.3008

0.0000, INF, -NF

0.0000, INF, NaN

140.1069, 63.5438,

2.9154

0.0000, NaN, NaN

154.8227, 64.7453,
3.5622

0.0000, NaN, NaN

■ 52.2406, 52.6468,
-0.6023

■ 52.2406, 52.6468,
-0.6023

■ 48.2637, 61.0503,
0.9233

■ 57.0577, 43.1619,
-1.2044

■ 45.2218, 67.6797,
3.3995

■ 62.5956, 33.1696,
-1.0021

■ 43.1636, 71.8891,
6.7089

■ 68.7451, 23.0394,
-0.1346

■ 42.0166, 73.5119,
10.5319

■ 75.4099, 12.9829,
1.2660

■ 41.8452, 73.6977,
11.2531

■ 82.5104, 3.1020,
3.0891

■ 89.9821, -6.5673,
5.2474

■ 97.3443, -15.3578,
7.1908

■ 97.6719, -13.5318,
2.5181

Harmonies

Analogous

The Analogous color harmony consists of three colors that are next to each other on the color wheel.



52.2420, 41.8464, -29.0244



52.2406, 52.6468, -0.6023



52.2420, 46.4988, 18.7243

Triad

The Triadic color harmony groups three colors that are evenly spaced from another and form a triangle on the color wheel.



52.2420, 52.6433, -0.6010



52.2420, -21.6088, 29.1758



52.2420, -26.6587, -49.0320

Complementary

The Complementary color scheme is a pair of colors which are on the opposite of each other on the color wheel.



52.2406, 52.6468, -0.6023



78.4496, -45.3911, 17.6633

Split Complementary

Split-complementary colors differ from the complementary color scheme. The scheme consists of three colors, the original color and two neighbors of the complement color.



52.2420, -38.6669, -20.4329



52.2406, 52.6468, -0.6023



52.2420, -36.1482, 22.2413

Square

The Square scheme is like the rectangle color scheme, but the four colors are evenly spaced on the color wheel.



52.2420, 52.6433, -0.6010



52.2420, 0.7604, 30.6284



52.2420, -41.7939, 6.0686



52.2420, -6.2487, -64.0147

Rectangle

The Rectangle color scheme consists of four colors that form a rectangle on the color wheel.



52.2406, 52.6468, -0.6023



52.2420, 34.1295, 25.7502



52.2420, -41.7939, 6.0686



52.2420, -31.6542, -40.1978

Sweetspot

The Sweet Spot groups the original color and five complimentary colors.



52.2420, 52.6433, -0.6010



85.9534, 13.5692, 1.6118



47.6695, 48.3925, -61.9785



39.0379, 7.3318, 0.5739

0.0000, NaN, NaN



46.2646, -2.4686, 2.5136

Same Dimension

The Same Dimension uses a secret algorithm to generate beautiful new colors.



52.2420, 52.6433, -0.6010



53.6225, 70.9315, 1.6028



52.5168, 42.2287, 20.6043



38.0371, 2.0789, 1.3140



31.6770, 55.8581, 7.9865



8.7162, 15.5682, 0.6598

Inverse Universe

The Inverse Universe completely reimagines the original color for something new.



52.2420, 52.6433, -0.6010



53.6225, 70.9315, 1.6028



77.0722, -31.5915, -10.0874



38.0371, 2.0789, 1.3140



31.6770, 55.8581, 7.9865



8.7162, 15.5682, 0.6598

Previews

White Background



This preview shows how the HunterLab color 52.2406, 52.6468, -0.6023 looks on a white background.

Color Contrast Check

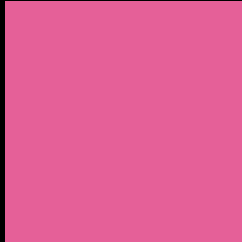
Large Text (above 18pt) WCAG AA ✓ Pass

Any Text WCAG AA × Fail

Large Text (above 18pt) WCAG AAA × Fail

Any Text WCAG AAA × Fail

Black Background



This preview shows how the HunterLab color 52.2406, 52.6468, -0.6023 looks on a black background.

Color Contrast Check

Large Text (above 18pt) WCAG AA ✓ Pass

Any Text WCAG AA ✓ Pass

Large Text (above 18pt) WCAG AAA ✓ Pass

Any Text WCAG AAA × Fail

If you want to check with other color combinations, try the [Color Contrast Checker](#).

HunterLab 52.2406, 52.6468, -0.6023 Background



This preview shows how black text looks on a background with the HunterLab color 52.2406, 52.6468, -0.6023.



This preview shows how white text looks on a background with the HunterLab color 52.2406, 52.6468, -0.6023.

-0.6023.

Color Blindness Simulation

Color vision deficiency is a very complex topic, and I could not describe the different causes any better than Wikipedia does, so if you want to learn more, you should check out their [article about color blindness](#).

Dichromacy



Original Color

52.2406, 52.6468, -0.6023

Protanopia

52.6011, 1.9008, -16.8293

Deuteranopia

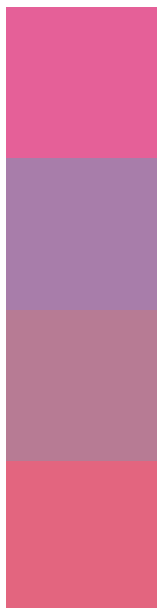
52.5143, 3.4569, 2.1751



Tritanopia

52.1912, 42.8672, 15.4962

Trichromacy



Original Color

52.2406, 52.6468, -0.6023

Protanomaly

50.8865, 18.7708, -12.6260

Deuteranomaly

51.3530, 21.2118, -0.3324

Tritanomaly

52.1254, 46.3161, 10.0918

Monochromacy



Original Color

52.2406, 52.6468, -0.6023

Achromatopsia

52.0094, -2.7751, 2.8258

Achromatomaly

50.7358, 16.6799, -0.2240

CSS Examples

Text

The CSS property to change the color of the text to HunterLab 52.2406, 52.6468, -0.6023 is called "color". The color property can be set on classes, ids or directly on the HTML element.

This example shows how text in the color `rgb(229, 96, 152)` looks like.

```
.text, #text, p{  
    color:rgb(229, 96, 152)  
}
```

If you want to add a text shadow in that color use the text-shadow property, you can generate a text shadow directly with our [CSS Text Shadow Generator](#).

Here you see how black text with a 4 pixel rgb(229, 96, 152) colored shadow looks like.

```
.shadow{ text-shadow: 4px 4px 2px rgb(229, 96, 152) }
```

Border

The CSS property to change the border of an element to HunterLab 52.2406, 52.6468, -0.6023 is called "border". The border property can be set on classes, ids or directly on the HTML element.

This example shows the color as border, it can be applied via the CSS property "border" or "border-color".

```
.border, #border, table{ border:4px solid rgb(229, 96, 152) }
```


If only the border color should be changed use the property `border-color`.

```
.border{ border-color:rgb(229, 96, 152) }
```

If you want to add a box shadow in that color use:

Here you see how a box with a 4 pixel `rgb(229, 96, 152)` colored shadow looks like.

```
.boxshadow{ -moz-box-shadow:4px 4px 4px  
4px rgb(229, 96, 152); -webkit-box-  
shadow:4px 4px 4px 4px rgb(229, 96, 152);  
box-shadow:4px 4px 4px 4px rgb(229, 96,  
152) }
```

Background

The CSS property to change the background color of an element to HunterLab 52.2406, 52.6468, -0.6023 is called "background". The background property can be set on classes, ids or directly on the HTML element.

```
.background, #background, body{  
background: rgb(229, 96, 152) }
```

If only the background color should be changed can be used:

```
.background{ background-color: rgb(229, 96,  
152) }
```

This example shows the color as background, it is applied via the CSS property "background".

To optimize and compress your CSS code, you can use our [online CSS compressor and optimizer](#) based on csstidy. If you want to create a linear or radial gradient as background or border, check our [CSS Gradient Generator](#).

Hey! You found this booklet interesting? Support Converting Colors with the new Membership Option!

The pro membership hides all ads, plus gives you double the colors in the color bucket, and more awesome pro features!

[Learn more, Memberships starting at \\$2.50/m!](#)

**Follow me
on Twitter!**

@ConvertingColor