

Converting Colors

HunterLab(52.2074, 12.4831,
9.1959)

Have a look what the booklet for
HunterLab(52.2074, 12.4831,
9.1959) contains.

| | |
|--|----|
| HunterLab(52.2074, 12.4831, 9.1959) | 3 |
| <i>Conversions</i> | 4 |
| <i>Details</i> | 6 |
| <i>Harmonies</i> | 12 |
| <i>Previews</i> | 24 |
| <i>Color Blindness Simulation</i> | 28 |
| <i>CSS Examples</i> | 31 |

Color

**HunterLab(52.2074, 12.4831,
9.1959)**

Conversions

Conversions Part 1

| Format | Color |
|---------------|---------------------------|
| Hex | B28380 |
| RGB | 178, 131, 128 |
| RGB Percent | 70%, 51%, 50% |
| CMY | 0.3020, 0.4863, 0.4980 |
| CMYK | 0.00, 0.26, 0.28, 0.30 |
| HSL | 4°, 25%, 60% |
| HSV | 4°, 28%, 70% |
| XYZ | 30.3727, 27.2561, 24.0822 |
| YIQ | 144.7110, 28.9750, 9.0310 |

Conversions

Conversions Part 2

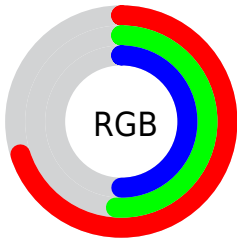
| Format | Color |
|-------------------------------------|-------------------------------|
| RYB | 178, 131, 128 |
| Decimal | 11699072 |
| CIELab | 59.21, 17.65, 8.72 |
| CIELCh | 59, 19.689, 26.301 |
| Yxy | 27.2574, 0.3717, 0.3336 |
| Android (android.graphics.Color) | 4289889152 (0xFFB28380) |
| YUV | 144.7110, -8.2385, 29.1945 |
| Hunter-Lab | 52.2074, 12.4831, 9.1959 |

Details

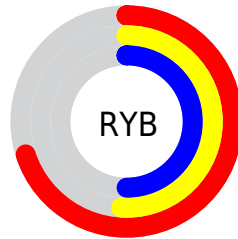
The HunterLab color **52.2074, 12.4831, 9.1959** is a light color, and the websafe version is hex **CC9999**. A complement of this color would be **62.0180, -15.6593, -2.3259**, and the grayscale version is **53.1206, -2.8344, 2.8861**.

A 20% lighter version of the original color is **74.3501, 13.3160, 11.1862**, and **32.7635, 11.6694, 7.0069** is the 20% darker color. If you saturate the color by 10%, you get **47.6358, 18.6876, 11.2477**, and if you desaturate by 10%, it is **57.1236, 6.5316, 7.1723**.

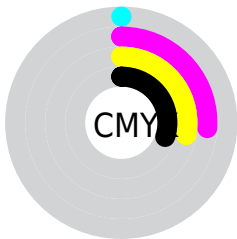
Distribution



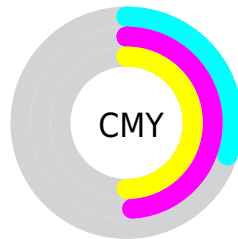
- Red (70%)
- Green (51%)
- Blue (50%)



- Red (70%)
- Yellow (51%)
- Blue (50%)



- Cyan (0%)
- Magenta (26%)
- Yellow (28%)
- Black (30%)



- Cyan (30%)
- Magenta (49%)
- Yellow (50%)

Brightness & Saturation Gradients

These gradients show how the HunterLab color 52.2074, 12.4831, 9.1959 changes by changing the brightness by 10 percent. The first figure shows a shift by +10% for each color and the second figure -10%.

Similar to the brightness gradients but the following saturation gradients show a change of the HunterLab color 52.2074, 12.4831, 9.1959 by changing the saturation by 10% instead.

■ 52.2074, 12.4831,
9.1959

■ 52.2074, 12.4831,
9.1959

169.9710, 12.8999,
19.0280

■ 42.1505, 12.0838,
8.1496

■ 74.3617, 13.0163,
11.3016

■ 32.8368, 11.5839,
7.0977

■ 86.3793, 13.1724,
12.3665

■ 24.3327, 10.9640,
6.0302

■ 98.9825, 13.2633,
13.4425

■ 16.7242, 10.2017,
4.9279

112.1453, 13.2944,
14.5312

■ 10.1326, 9.2693,
4.1643

125.8447, 13.2700,
15.6335

0.0000, INF, NaN

0.0000, NaN, NaN

140.0606, 13.1941,

16.7501

0.0000, NaN, NaN

154.7748, 13.0698,
17.8815

0.0000, NaN, NaN

■ 52.2074, 12.4831,
9.1959

■ 52.2074, 12.4831,
9.1959

■ 47.6358, 18.6876,
11.2477

■ 57.1236, 6.5316,
7.1723

■ 43.4682, 25.0913,
13.2879

■ 62.3290, 0.8500,
5.1916

■ 39.7801, 31.5483,
15.2498

■ 67.7832, -4.5790,
3.2600

■ 36.6530, 37.7946,
17.0276

■ 73.4527, -9.7817,
1.3765

■ 34.1654, 43.4330,
18.4818

■ 79.3107, -14.7873,
-0.4631

■ 32.3731, 47.9863,
19.4709

■ 85.3356, -19.6245,
-2.2640

■ 31.2787, 51.0334,
19.9821

■ 91.5096, -24.3192,
-4.0318

■ 31.1406, 51.4116,
20.0888

■ 93.9175, -27.1887,
-2.3302

Harmonies

Analogous

The Analogous color harmony consists of three colors that are next to each other on the color wheel.



52.2086, 14.3119, 1.8418



52.2074, 12.4831, 9.1959



52.2086, 6.4705, 14.0687

Triad

The Triadic color harmony groups three colors that are evenly spaced from another and form a triangle on the color wheel.



52.2086, 12.4810, 9.1968



52.2086, -15.5480, 10.6621



52.2086, -3.8255, -14.9164

Complementary

The Complementary color scheme is a pair of colors which are on the opposite of each other on the color wheel.



52.2074, 12.4831, 9.1959



62.0180, -15.6593, -2.3259

Split Complementary

Split-complementary colors differ from the complementary color scheme. The scheme consists of three colors, the original color and two neighbors of the complement color.



52.2086, -11.4441, -11.6117



52.2074, 12.4831, 9.1959



52.2086, -17.9368, 3.8226

Square

The Square scheme is like the rectangle color scheme, but the four colors are evenly spaced on the color wheel.



52.2086, 12.4810, 9.1968



52.2086, -9.7485, 14.8162



52.2086, -16.4827, -4.4283



52.2086, 4.5563, -12.8790

Rectangle

The Rectangle color scheme consists of four colors that form a rectangle on the color wheel.



52.2074, 12.4831, 9.1959



52.2086, 1.0885, 15.6651



52.2086, -16.4827, -4.4283



52.2086, -6.5556, -14.3817

Sweetspot

The Sweet Spot groups the original color and five complimentary colors.



52.2086, 12.4810, 9.1968



83.8993, 1.1812, 7.0041



52.9325, 21.5738, -12.7234



38.9861, 1.0848, 3.4828



95.4677, -5.0939, 5.1869



42.2927, -2.2566, 2.2978

Same Dimension

The Same Dimension uses a secret algorithm to generate beautiful new colors.



52.2086, 12.4810, 9.1968



66.2467, 22.2030, 14.1780



58.8500, 0.3252, 15.6937



29.2993, 0.7300, 2.5812



26.4042, 43.2760, 17.0278



4.9633, 6.7778, 3.1770

Inverse Universe

The Inverse Universe completely reimagines the original color for something new.



62.0180, -15.6593, -2.3259



82.2948, -24.0850, -4.7414



54.5678, -4.1480, -12.2128



30.8907, -3.7974, 0.7223



47.1048, -22.9617, -9.3092



8.5107, -4.2624, -1.4363

Previews

White Background



This preview shows how the HunterLab color 52.2074, 12.4831, 9.1959 looks on a white background.

Color Contrast Check

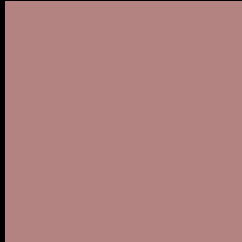
Large Text (above 18pt) WCAG AA ✓ Pass

Any Text WCAG AA × Fail

Large Text (above 18pt) WCAG AAA × Fail

Any Text WCAG AAA × Fail

Black Background



This preview shows how the HunterLab color 52.2074, 12.4831, 9.1959 looks on a black background.

Color Contrast Check

Large Text (above 18pt) WCAG AA ✓ Pass

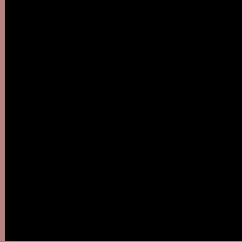
Any Text WCAG AA ✓ Pass

Large Text (above 18pt) WCAG AAA ✓ Pass

Any Text WCAG AAA × Fail

If you want to check with other color combinations, try the [Color Contrast Checker](#).

HunterLab 52.2074, 12.4831, 9.1959 Background



This preview shows how black text looks on a background with the HunterLab color 52.2074, 12.4831, 9.1959.



This preview shows how white text looks on a background with the HunterLab color 52.2074, 12.4831,

Color Blindness Simulation

Color vision deficiency is a very complex topic, and I could not describe the different causes any better than Wikipedia does, so if you want to learn more, you should check out their [article about color blindness](#).

Dichromacy



Original Color

52.2074, 12.4831, 9.1959

Protanopia

52.2210, -2.4846, 6.5274

Deuteranopia

52.3361, 3.2946, 9.5604



Tritanopia

52.1040, 15.3645, 4.5804

Trichromacy



Original Color

52.2074, 12.4831, 9.1959

Protanomaly

52.0692, 2.6516, 7.2741

Deuteranomaly

52.1393, 6.8167, 9.4150

Tritanomaly

52.2477, 14.2917, 6.4338

Monochromacy



Original Color

52.2074, 12.4831, 9.1959

Achromatopsia

53.2117, -2.8392, 2.8911

Achromatomaly

52.7147, 2.3684, 5.0511

CSS Examples

Text

The CSS property to change the color of the text to HunterLab 52.2074, 12.4831, 9.1959 is called "color". The color property can be set on classes, ids or directly on the HTML element.

This example shows how text in the color `rgb(178, 131, 128)` looks like.

```
.text, #text, p{  
    color:rgb(178, 131, 128)  
}
```

If you want to add a text shadow in that color use the text-shadow property, you can generate a text shadow directly with our [CSS Text Shadow Generator](#).

Here you see how black text with a 4 pixel rgb(178, 131, 128) colored shadow looks like.

```
.shadow{ text-shadow: 4px 4px 2px rgb(178, 131, 128) }
```

Border

The CSS property to change the border of an element to HunterLab 52.2074, 12.4831, 9.1959 is called "border". The border property can be set on classes, ids or directly on the HTML element.

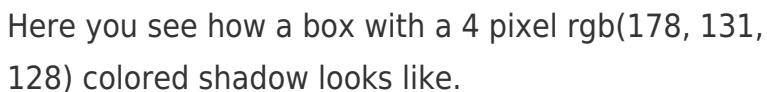
This example shows the color as border, it can be applied via the CSS property "border" or "border-color".

```
.border, #border, table{ border:4px solid rgb(178, 131, 128) }
```


If only the border color should be changed use the property `border-color`.

```
.border{ border-color:rgb(178, 131, 128) }
```

If you want to add a box shadow in that color use:



Here you see how a box with a 4 pixel `rgb(178, 131, 128)` colored shadow looks like.

```
.boxshadow{ -moz-box-shadow:4px 4px 4px 4px rgb(178, 131, 128); -webkit-box-shadow:4px 4px 4px 4px rgb(178, 131, 128); box-shadow:4px 4px 4px 4px rgb(178, 131, 128) }
```

Background

The CSS property to change the background color of an element to HunterLab 52.2074, 12.4831, 9.1959 is called "background". The background property can be set on classes, ids or directly on the HTML element.

```
.background, #background, body{  
background: rgb(178, 131, 128) }
```

If only the background color should be changed can be used:

```
.background{ background-color: rgb(178,  
131, 128) }
```

This example shows the color as background, it is applied via the CSS property "background".

To optimize and compress your CSS code, you can use our [online CSS compressor and optimizer](#) based on csstidy. If you want to create a linear or radial gradient as background or border, check our [CSS Gradient Generator](#).

Hey! You found this booklet interesting? Support Converting Colors with the new Membership Option!

The pro membership hides all ads, plus gives you double the colors in the color bucket, and more awesome pro features!

[Learn more, Memberships starting at \\$2.50/m!](#)

**Follow me
on Twitter!**

@ConvertingColor