

Converting Colors

HunterLab(52.2588, 8.0566,
13.5966)

Have a look what the booklet for
HunterLab(52.2588, 8.0566,
13.5966) contains.

HunterLab(52.2588, 8.0566, 13.5966)	3
<i>Conversions</i>	4
<i>Details</i>	6
<i>Harmonies</i>	12
<i>Previews</i>	24
<i>Color Blindness Simulation</i>	28
<i>CSS Examples</i>	31

Color

**HunterLab(52.2588, 8.0566,
13.5966)**

Conversions

Conversions Part 1

Format	Color
Hex	AE8674
RGB	174, 134, 116
RGB Percent	68%, 53%, 45%
CMY	0.3176, 0.4745, 0.5451
CMYK	0.00, 0.23, 0.33, 0.32
HSL	19°, 26%, 57%
HSV	19°, 33%, 68%
XYZ	29.1330, 27.3098, 20.2588
YIQ	143.9080, 29.6180, 2.8820

Conversions

Conversions Part 2

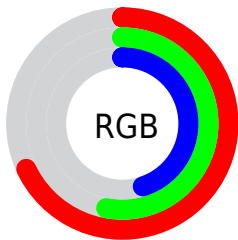
Format	Color
RYB	174, 142, 116
Decimal	11437684
CIELab	59.26, 12.72, 15.58
CIELCh	59, 20.116, 50.770
Yxy	27.3111, 0.3798, 0.3561
Android (android.graphics.Color)	4289627764 (0xFFAE8674)
YUV	143.9080, -13.7586, 26.3907
Hunter-Lab	52.2588, 8.0566, 13.5966

Details

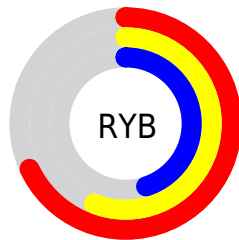
The HunterLab color $52.2588, 8.0566, 13.5966$ is a dark color, and the websafe version is hex $CC9999$. A complement of this color would be $55.2674, -10.3851, -9.0853$, and the grayscale version is $52.8196, -2.8183, 2.8698$.

A 20% lighter version of the original color is $74.2905, 8.0797, 16.3533$, and $32.7888, 7.7259, 10.4506$ is the 20% darker color. If you saturate the color by 10%, you get $48.7979, 12.0838, 16.0594$, and if you desaturate by 10%, it is $55.9125, 4.3013, 10.8432$.

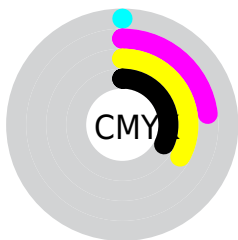
Distribution



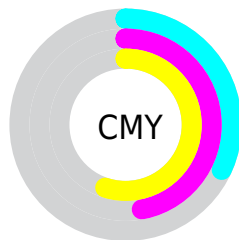
- Red (68%)
- Green (53%)
- Blue (45%)



- Red (68%)
- Yellow (56%)
- Blue (45%)



- Cyan (0%)
- Magenta (23%)
- Yellow (33%)
- Black (32%)



- Cyan (32%)
- Magenta (47%)
- Yellow (55%)

Brightness & Saturation Gradients

These gradients show how the HunterLab color 52.2588, 8.0566, 13.5966 changes by changing the brightness by 10 percent. The first figure shows a shift by +10% for each color and the second figure -10%.

Similar to the brightness gradients but the following saturation gradients show a change of the HunterLab color 52.2588, 8.0566, 13.5966 by changing the saturation by 10% instead.

■ 52.2588, 8.0566,
13.5966

■ 52.2588, 8.0566,
13.5966

170.0471, 6.6529,
26.2990

■ 42.1984, 7.9057,
12.1196

■ 74.4195, 8.1284,
16.4682

■ 32.8809, 7.6682,
10.5939

■ 86.4401, 8.0687,
17.8798

■ 24.3726, 7.3267,
8.9951

■ 99.0462, 7.9524,
19.2835

■ 16.7594, 6.8593,
7.2813

112.2116, 7.7837,
20.6834

■ 10.1623, 6.2343,
6.9563

125.9137, 7.5665,
22.0828

0.0000, INF, NaN

0.0000, NaN, NaN

140.1320, 7.3039,

23.4840

0.0000, NaN, NaN

154.8486, 6.9986,
24.8889

0.0000, NaN, NaN

■ 52.2588, 8.0566,
13.5966

■ 52.2588, 8.0566,
13.5966

■ 48.7979, 12.0838,
16.0594

■ 55.9125, 4.3013,
10.8432

■ 45.5512, 16.3908,
18.1713

■ 59.7336, 0.8102,
7.8451

■ 42.5481, 20.9565,
19.8671

■ 63.7050, -2.4386,
4.6421

■ 39.8198, 25.7304,
21.0766

■ 67.8106, -5.4676,
1.2658

■ 37.3983, 30.6173,
21.7377

■ 72.0372, -8.2993,
-2.2589

■ 35.3139, 35.4663,
21.8185

■ 76.3733, -10.9552,
-5.9120

■ 34.1146, 38.5384,
21.6959

■ 80.8091, -13.4549,
-9.6776

■ 85.3287, -15.8588,
-13.4360

■ 89.2858, -21.7921,
-8.1880

Harmonies

Analogous

The Analogous color harmony consists of three colors that are next to each other on the color wheel.



52.2600, 13.5422, 8.1083



52.2588, 8.0566, 13.5966



52.2600, -0.1192, 16.0828

Triad

The Triadic color harmony groups three colors that are evenly spaced from another and form a triangle on the color wheel.



52.2600, 8.0545, 13.5974



52.2600, -18.0954, 5.2994



52.2600, 3.1872, -14.0551

Complementary

The Complementary color scheme is a pair of colors which are on the opposite of each other on the color wheel.



52.2588, 8.0566, 13.5966



55.2674, -10.3851, -9.0853

Split Complementary

Split-complementary colors differ from the complementary color scheme. The scheme consists of three colors, the original color and two neighbors of the complement color.



52.2600, -5.4107, -15.1329



52.2588, 8.0566, 13.5966



52.2600, -17.3364, -3.0307

Square

The Square scheme is like the rectangle color scheme, but the four colors are evenly spaced on the color wheel.



52.2600, 8.0545, 13.5974



52.2600, -14.9637, 11.8266



52.2600, -12.8189, -10.8270



52.2600, 10.6085, -8.0831

Rectangle

The Rectangle color scheme consists of four colors that form a rectangle on the color wheel.



52.2588, 8.0566, 13.5966



52.2600, -5.8377, 16.0302



52.2600, -12.8189, -10.8270



52.2600, 0.3266, -15.0357

Sweetspot

The Sweet Spot groups the original color and five complimentary colors.



52.2600, 8.0545, 13.5974



82.1171, -0.3234, 9.2322



48.8983, 23.0388, -7.9265



38.3695, 0.1369, 4.6285



94.3401, -5.0338, 5.1257



41.3092, -2.2042, 2.2444

Same Dimension

The Same Dimension uses a secret algorithm to generate beautiful new colors.



52.2600, 8.0545, 13.5974



66.9187, 14.8140, 20.8010



60.2010, -5.7284, 20.7220



28.9928, -0.2494, 3.1096



29.2165, 32.3600, 18.5696



5.7984, 3.0755, 3.6268

Inverse Universe

The Inverse Universe completely reimagines the original color for something new.



55.2674, -10.3851, -9.0853



71.7867, -15.1999, -16.0236



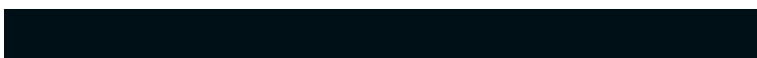
47.0143, 3.1881, -21.4744



29.4044, -2.7515, 0.0188



34.7371, -7.0073, -28.2916



6.5354, -2.2358, -3.3422

Previews

White Background



This preview shows how the HunterLab color 52.2588, 8.0566, 13.5966 looks on a white background.

Color Contrast Check

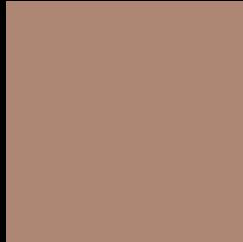
Large Text (above 18pt) WCAG AA ✓ Pass

Any Text WCAG AA × Fail

Large Text (above 18pt) WCAG AAA × Fail

Any Text WCAG AAA × Fail

Black Background



This preview shows how the HunterLab color 52.2588, 8.0566, 13.5966 looks on a black background.

Color Contrast Check

Large Text (above 18pt) WCAG AA ✓ Pass

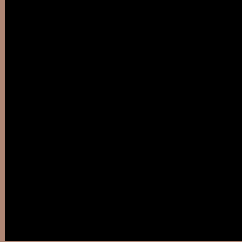
Any Text WCAG AA ✓ Pass

Large Text (above 18pt) WCAG AAA ✓ Pass

Any Text WCAG AAA × Fail

If you want to check with other color combinations, try the [Color Contrast Checker](#).

HunterLab 52.2588, 8.0566, 13.5966 Background



This preview shows how black text looks on a background with the HunterLab color 52.2588, 8.0566, 13.5966.



This preview shows how white text looks on a background with the HunterLab color 52.2588, 8.0566,

Color Blindness Simulation

Color vision deficiency is a very complex topic, and I could not describe the different causes any better than Wikipedia does, so if you want to learn more, you should check out their [article about color blindness](#).

Dichromacy



Original Color

52.2588, 8.0566, 13.5966

Protanopia

52.5169, -3.6177, 12.2364

Deuteranopia

52.1882, 3.6391, 13.7950



Tritanopia

52.1876, 14.4352, 3.7817

Trichromacy



Original Color

52.2588, 8.0566, 13.5966

Protanomaly

52.4013, 0.2907, 12.5475

Deuteranomaly

52.2314, 5.1763, 13.8637

Tritanomaly

52.0852, 12.2996, 7.4605

Monochromacy



Original Color

52.2588, 8.0566, 13.5966

Achromatopsia

52.8104, -2.8178, 2.8693

Achromatomaly

52.3889, 0.9912, 6.7738

CSS Examples

Text

The CSS property to change the color of the text to HunterLab 52.2588, 8.0566, 13.5966 is called "color". The color property can be set on classes, ids or directly on the HTML element.

This example shows how text in the color `rgb(174, 134, 116)` looks like.

```
.text, #text, p{  
    color:rgb(174, 134, 116)  
}
```

If you want to add a text shadow in that color use the text-shadow property, you can generate a text shadow directly with our [CSS Text Shadow Generator](#).

Here you see how black text with a 4 pixel rgb(174, 134, 116) colored shadow looks like.

```
.shadow{ text-shadow: 4px 4px 2px rgb(174, 134, 116) }
```

Border

The CSS property to change the border of an element to HunterLab 52.2588, 8.0566, 13.5966 is called "border". The border property can be set on classes, ids or directly on the HTML element.

This example shows the color as border, it can be applied via the CSS property "border" or "border-color".

```
.border, #border, table{ border:4px solid rgb(174, 134, 116) }
```


If only the border color should be changed use the property `border-color`.

```
.border{ border-color:rgb(174, 134, 116) }
```

If you want to add a box shadow in that color use:

Here you see how a box with a 4 pixel `rgb(174, 134, 116)` colored shadow looks like.

```
.boxshadow{ -moz-box-shadow:4px 4px 4px  
4px rgb(174, 134, 116); -webkit-box-  
shadow:4px 4px 4px 4px rgb(174, 134, 116);  
box-shadow:4px 4px 4px 4px rgb(174, 134,  
116) }
```

Background

The CSS property to change the background color of an element to HunterLab 52.2588, 8.0566, 13.5966 is called "background". The background property can be set on classes, ids or directly on the HTML element.

```
.background, #background, body{  
background: rgb(174, 134, 116) }
```

If only the background color should be changed can be used:

```
.background{ background-color: rgb(174,  
134, 116) }
```

This example shows the color as background, it is applied via the CSS property "background".

To optimize and compress your CSS code, you can use our [online CSS compressor and optimizer](#) based on csstidy. If you want to create a linear or radial gradient as background or border, check our [CSS Gradient Generator](#).

Hey! You found this booklet interesting? Support Converting Colors with the new Membership Option!

The pro membership hides all ads, plus gives you double the colors in the color bucket, and more awesome pro features!

[Learn more, Memberships starting at \\$2.50/m!](#)

**Follow me
on Twitter!**

@ConvertingColor