

Converting Colors

HunterLab(52.2758, 7.1030,
22.4879)

Have a look what the booklet for
HunterLab(52.2758, 7.1030,
22.4879) contains.

HunterLab(52.2396, 6.8356, 22.5552)	3
<i>Conversions</i>	4
<i>Details</i>	6
<i>Harmonies</i>	12
<i>Previews</i>	24
<i>Color Blindness Simulation</i>	28
<i>CSS Examples</i>	31

Color

**HunterLab(52.2396, 6.8356,
22.5552)**

Conversions

Conversions Part 1

Format	Color
Hex	B38655
RGB	179, 134, 85
RGB Percent	70%, 53%, 33%
CMY	0.2980, 0.4745, 0.6667
CMYK	0.00, 0.25, 0.53, 0.30
HSL	31°, 38%, 52%
HSV	31°, 53%, 70%
XYZ	28.7552, 27.2898, 12.3462
YIQ	141.8690, 42.5490, -5.6990

Conversions

Conversions Part 2

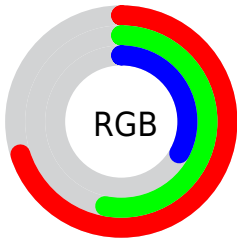
Format	Color
R_{YB}	171, 179, 85
Decimal	11765333
CIE Lab	59.24, 11.34, 32.92
CIE LCh	59, 34.822, 70.999
Yxy	27.2911, 0.4204, 0.3990
Android (android.graphics.Color)	4289955413 (0xFFB38655)
YUV	141.8690, -28.0364, 32.5639
Hunter-Lab	52.2396, 6.8356, 22.5552

Details

The HunterLab color $52.2396, 6.8356, 22.5552$ is a dark color, and the websafe version is hex $CC9966$. A complement of this color would be $45.9895, -3.3782, -26.7023$, and the grayscale version is $52.0546, -2.7775, 2.8282$.

A 20% lighter version of the original color is $74.3793, 6.9628, 27.3868$, and $32.8111, 6.9514, 17.0262$ is the 20% darker color. If you saturate the color by 10%, you get $49.7676, 9.7307, 24.4916$, and if you desaturate by 10%, it is $54.8434, 4.2437, 20.0241$.

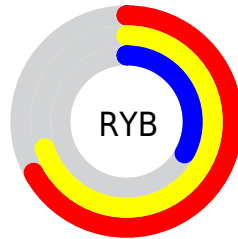
Distribution



Red (70%)

Green (53%)

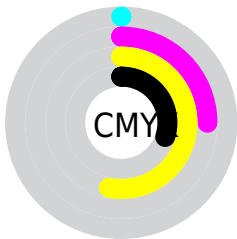
Blue (33%)



Red (67%)

Yellow (70%)

Blue (33%)

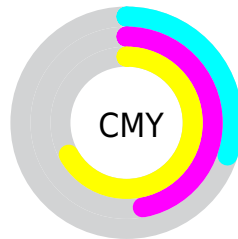


Cyan (0%)

Magenta (25%)

Yellow (53%)

Black (30%)



Cyan (30%)

Magenta (47%)

Yellow (67%)

Brightness & Saturation Gradients

These gradients show how the HunterLab color 52.2396, 6.8356, 22.5552 changes by changing the brightness by 10 percent. The first figure shows a shift by +10% for each color and the second figure -10%.

Similar to the brightness gradients but the following saturation gradients show a change of the HunterLab color 52.2396, 6.8356, 22.5552 by changing the saturation by 10% instead.

■ 52.2396, 6.8356,
22.5552

■ 52.2396, 6.8356,
22.5552

170.0187, 4.9138,
43.0792

■ 42.1805, 6.7558,
19.8909

■ 74.3980, 6.7752,
27.5340

■ 32.8645, 6.5941,
17.0617

■ 86.4175, 6.6540,
29.8953

■ 24.3577, 6.3336,
14.0153

■ 99.0225, 6.4787,
32.1935

■ 16.7463, 5.9534,
11.6599

■ 112.1869, 6.2534,
34.4406

■ 10.1512, 5.4219,
7.1059

■ 125.8880, 5.9814,
36.6460

0.0000, INF, NaN

0.0000, NaN, NaN

140.1054, 5.6659,

38.8170

0.0000, NaN, NaN

154.8211, 5.3093,
40.9598

0.0000, NaN, NaN

■ 52.2396, 6.8356,
22.5552

■ 52.2396, 6.8356,
22.5552

■ 49.7676, 9.7307,
24.4916

■ 54.8434, 4.2437,
20.0241

■ 47.4331, 12.9343,
25.7945

■ 57.5656, 1.9549,
16.9406

■ 45.2467, 16.4296,
26.4423

■ 60.3988, -0.0460,
13.3510

■ 43.2165, 20.1832,
26.4419

■ 63.3344, -1.7749,
9.3007

■ 41.7948, 23.0925,
26.1580

■ 66.3648, -3.2497,
4.8319

■ 69.4830, -4.4884,
-0.0161

■ 72.6828, -5.5091,
-5.2081

■ 75.9582, -6.3290,
-10.7123

■ 79.3043, -6.9643,
-16.5006

Harmonies

Analogous

The Analogous color harmony consists of three colors that are next to each other on the color wheel.



52.2409, 20.5489, 17.7070



52.2396, 6.8356, 22.5552



52.2409, -8.1264, 23.0949

Triad

The Triadic color harmony groups three colors that are evenly spaced from another and form a triangle on the color wheel.



52.2409, 6.8333, 22.5558



52.2409, -27.9645, -2.6079



52.2409, 17.2893, -22.0851

Complementary

The Complementary color scheme is a pair of colors which are on the opposite of each other on the color wheel.



52.2396, 6.8356, 22.5552



45.9895, -3.3782, -26.7023

Split Complementary

Split-complementary colors differ from the complementary color scheme. The scheme consists of three colors, the original color and two neighbors of the complement color.



52.2409, 2.7691, -31.4562



52.2396, 6.8356, 22.5552



52.2409, -22.6375, -18.2947

Square

The Square scheme is like the rectangle color scheme, but the four colors are evenly spaced on the color wheel.



52.2409, 6.8333, 22.5558



52.2409, -27.1358, 10.9353



52.2409, -11.7639, -29.9024



52.2409, 27.0359, -6.7935

Rectangle

The Rectangle color scheme consists of four colors that form a rectangle on the color wheel.



52.2396, 6.8356, 22.5552



52.2409, -16.6955, 21.1770



52.2409, -11.7639, -29.9024



52.2409, 12.7412, -26.2018

Sweetspot

The Sweet Spot groups the original color and five complimentary colors.



52.2409, 6.8333, 22.5558



83.2674, -1.5472, 14.5522



42.0765, 36.2301, -3.4130



38.8174, -0.5080, 7.3691



95.4677, -5.0939, 5.1869



42.2927, -2.2566, 2.2978

Same Dimension

The Same Dimension uses a secret algorithm to generate beautiful new colors.



52.2409, 6.8333, 22.5558



66.1057, 13.6608, 33.1036



65.0338, -15.0264, 31.9749



30.3542, -1.0730, 3.7378



35.3198, 18.9917, 22.0964



7.1309, 1.5650, 4.4214

Inverse Universe

The Inverse Universe completely reimagines the original color for something new.



45.9895, -3.3782, -26.7023



56.1454, -2.0553, -46.0986



34.2891, 19.5146, -52.2724



29.7975, -2.0274, -0.5898



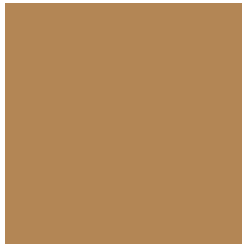
26.6389, 7.9793, -50.5213



5.8339, -0.5742, -6.0523

Previews

White Background



This preview shows how the HunterLab color 52.2396, 6.8356, 22.5552 looks on a white background.

Color Contrast Check

Large Text (above 18pt) WCAG AA ✓ Pass

Any Text WCAG AA × Fail

Large Text (above 18pt) WCAG AAA × Fail

Any Text WCAG AAA × Fail

Black Background



This preview shows how the HunterLab color 52.2396, 6.8356, 22.5552 looks on a black background.

Color Contrast Check

Large Text (above 18pt) WCAG AA ✓ Pass

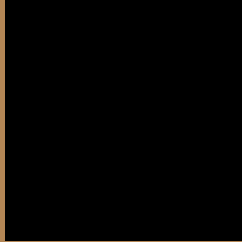
Any Text WCAG AA ✓ Pass

Large Text (above 18pt) WCAG AAA ✓ Pass

Any Text WCAG AAA × Fail

If you want to check with other color combinations, try the [Color Contrast Checker](#).

HunterLab 52.2396, 6.8356, 22.5552 Background



This preview shows how black text looks on a background with the HunterLab color 52.2396, 6.8356, 22.5552.



This preview shows how white text looks on a background with the HunterLab color 52.2396, 6.8356,

Color Blindness Simulation

Color vision deficiency is a very complex topic, and I could not describe the different causes any better than Wikipedia does, so if you want to learn more, you should check out their [article about color blindness](#).

Dichromacy



Original Color

52.2396, 6.8356, 22.5552

Protanopia

52.3616, -5.4053, 21.7162

Deuteranopia

52.1987, 3.9227, 22.7063



Tritanopia

52.2607, 17.0325, 5.6507

Trichromacy



Original Color

52.2396, 6.8356, 22.5552

Protanomaly

52.2846, -1.3402, 21.9691

Deuteranomaly

52.1518, 5.1472, 22.6903

Tritanomaly

52.1712, 13.2046, 12.9006

Monochromacy



Original Color

52.2396, 6.8356, 22.5552

Achromatopsia

52.0094, -2.7751, 2.8258

Achromatomaly

51.7825, -0.3003, 11.1911

CSS Examples

Text

The CSS property to change the color of the text to HunterLab 52.2396, 6.8356, 22.5552 is called "color". The color property can be set on classes, ids or directly on the HTML element.

This example shows how text in the color `rgb(179, 134, 85)` looks like.

```
.text, #text, p{  
    color:rgb(179, 134, 85)  
}
```

If you want to add a text shadow in that color use the text-shadow property, you can generate a text shadow directly with our [CSS Text Shadow Generator](#).

Here you see how black text with a 4 pixel rgb(179, 134, 85) colored shadow looks like.

```
.shadow{ text-shadow: 4px 4px 2px rgb(179, 134, 85) }
```

Border

The CSS property to change the border of an element to HunterLab 52.2396, 6.8356, 22.5552 is called "border". The border property can be set on classes, ids or directly on the HTML element.

This example shows the color as border, it can be applied via the CSS property "border" or "border-color".

```
.border, #border, table{ border:4px solid rgb(179, 134, 85) }
```


If only the border color should be changed use the property `border-color`.

```
.border{ border-color:rgb(179, 134, 85) }
```

If you want to add a box shadow in that color use:

Here you see how a box with a 4 pixel `rgb(179, 134, 85)` colored shadow looks like.

```
.boxshadow{ -moz-box-shadow:4px 4px 4px  
4px rgb(179, 134, 85); -webkit-box-  
shadow:4px 4px 4px 4px rgb(179, 134, 85);  
box-shadow:4px 4px 4px 4px rgb(179, 134,  
85) }
```

Background

The CSS property to change the background color of an element to HunterLab 52.2396, 6.8356, 22.5552 is called "background". The background property can be set on classes, ids or directly on the HTML element.

```
.background, #background, body{  
background: rgb(179, 134, 85) }
```

If only the background color should be changed can be used:

```
.background{ background-color: rgb(179,  
134, 85) }
```

This example shows the color as background, it is applied via the CSS property "background".

To optimize and compress your CSS code, you can use our [online CSS compressor and optimizer](#) based on csstidy. If you want to create a linear or radial gradient as background or border, check our [CSS Gradient Generator](#).

Hey! You found this booklet interesting? Support Converting Colors with the new Membership Option!

The pro membership hides all ads, plus gives you double the colors in the color bucket, and more awesome pro features!

[Learn more, Memberships starting at \\$2.50/m!](#)

**Follow me
on Twitter!**

@ConvertingColor