

Converting Colors

HunterLab(52.2936, 3.5759,
17.1331)

Have a look what the booklet for
HunterLab(52.2936, 3.5759,
17.1331) contains.

HunterLab(52.2936, 3.5759, 17.1331)	3
<i>Conversions</i>	4
<i>Details</i>	6
<i>Harmonies</i>	12
<i>Previews</i>	24
<i>Color Blindness Simulation</i>	28
<i>CSS Examples</i>	31

Color

**HunterLab(52.2936, 3.5759,
17.1331)**

Conversions

Conversions Part 1

Format	Color
Hex	A98969
RGB	169, 137, 105
RGB Percent	66%, 54%, 41%
CMY	0.3373, 0.4627, 0.5882
CMYK	0.00, 0.19, 0.38, 0.34
HSL	30°, 27%, 54%
HSV	30°, 38%, 66%
XYZ	27.8576, 27.3462, 17.1746
YIQ	142.9200, 29.3440, -3.1680

Conversions

Conversions Part 2

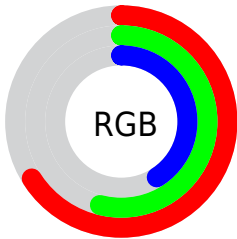
Format	Color
R_{YB}	169, 169, 105
Decimal	11110761
CIE _{Lab}	59.29, 7.58, 21.76
CIE _{LCh}	59, 23.040, 70.779
Yxy	27.3475, 0.3849, 0.3778
Android (android.graphics.Color)	4289300841 (0xFFA98969)
YUV	142.9200, -18.6946, 22.8722
Hunter-Lab	52.2936, 3.5759, 17.1331

Details

The HunterLab color **52.2936, 3.5759, 17.1331** is a dark color, and the websafe version is hex **CC9966**. A complement of this color would be **48.7425, -4.9804, -15.7110**, and the grayscale version is **52.4428, -2.7982, 2.8493**.

A 20% lighter version of the original color is **74.3201, 3.1555, 20.7592**, and **32.7973, 3.6532, 13.2758** is the 20% darker color. If you saturate the color by 10%, you get **49.7241, 6.0293, 19.7105**, and if you desaturate by 10%, it is **54.9794, 1.3931, 14.0811**.

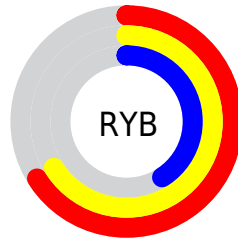
Distribution



Red (66%)

Green (54%)

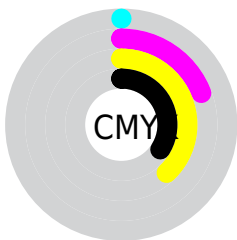
Blue (41%)



Red (66%)

Yellow (66%)

Blue (41%)

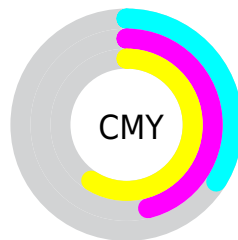


Cyan (0%)

Magenta (19%)

Yellow (38%)

Black (34%)



Cyan (34%)

Magenta (46%)

Yellow (59%)

Brightness & Saturation Gradients

These gradients show how the HunterLab color 52.2936, 3.5759, 17.1331 changes by changing the brightness by 10 percent. The first figure shows a shift by +10% for each color and the second figure -10%.

Similar to the brightness gradients but the following saturation gradients show a change of the HunterLab color 52.2936, 3.5759, 17.1331 by changing the saturation by 10% instead.

■ 52.2936, 3.5759,
17.1331

■ 52.2936, 3.5759,
17.1331

170.0987, 0.2300,
32.5358

■ 42.2308, 3.6946,
15.2466

■ 74.4587, 3.1512,
20.7305

■ 32.9107, 3.7444,
13.2697

■ 86.4813, 2.8606,
22.4694

■ 24.3996, 3.7113,
11.1656

■ 99.0892, 2.5231,
24.1816

■ 16.7832, 3.5784,
8.9052

■ 112.2565, 2.1418,
25.8740

■ 10.1825, 3.3182,
7.1278

125.9603, 1.7197,
27.5519

0.0000, INF, NaN

0.0000, NaN, NaN

140.1804, 1.2590,

29.2194

0.0000, NaN, NaN

154.8986, 0.7618,
30.8798

0.0000, NaN, NaN

■ 52.2936, 3.5759,
17.1331

■ 52.2936, 3.5759,
17.1331

■ 49.7241, 6.0293,
19.7105

■ 54.9794, 1.3931,
14.0811

■ 47.2769, 8.7687,
21.7668

■ 57.7687, -0.5270,
10.5964

■ 44.9634, 11.7943,
23.2616

■ 60.6546, -2.2027,
6.7212

■ 42.7938, 15.0972,
24.1627

■ 63.6295, -3.6514,
2.4937

■ 40.7780, 18.6525,
24.4571

■ 66.6867, -4.8905,
-2.0516

■ 38.9206, 22.3966,
24.2173

■ 69.8201, -5.9368,
-6.8842

■ 38.5423, 23.1952,
24.1557

■ 73.0242, -6.8063,
-11.9769

■ 76.2941, -7.5138,
-17.3058

■ 79.5401, -8.5456,
-21.6589

Harmonies

Analogous

The Analogous color harmony consists of three colors that are next to each other on the color wheel.



52.2948, 12.2980, 13.2783



52.2936, 3.5759, 17.1331



52.2948, -6.2803, 17.6044

Triad

The Triadic color harmony groups three colors that are evenly spaced from another and form a triangle on the color wheel.



52.2948, 3.5739, 17.1338



52.2948, -20.0907, -0.6280



52.2948, 10.1294, -12.6755

Complementary

The Complementary color scheme is a pair of colors which are on the opposite of each other on the color wheel.



52.2936, 3.5759, 17.1331



48.7425, -4.9804, -15.7110

Split Complementary

Split-complementary colors differ from the complementary color scheme. The scheme consists of three colors, the original color and two neighbors of the complement color.



52.2948, 0.7879, -18.0683



52.2936, 3.5759, 17.1331



52.2948, -16.3459, -10.3070

Square

The Square scheme is like the rectangle color scheme, but the four colors are evenly spaced on the color wheel.



52.2948, 3.5739, 17.1338



52.2948, -19.4659, 8.4249



52.2948, -8.8694, -17.1293



52.2948, 16.2717, -3.4233

Rectangle

The Rectangle color scheme consists of four colors that form a rectangle on the color wheel.



52.2936, 3.5759, 17.1331



52.2948, -12.1155, 16.0544



52.2948, -8.8694, -17.1293



52.2948, 7.2318, -15.0706

Sweetspot

The Sweet Spot groups the original color and five complimentary colors.



52.2948, 3.5739, 17.1338



79.8729, -2.2365, 10.7752



45.1049, 23.6799, -2.9022



37.0567, -0.9115, 5.3449



92.0917, -4.9138, 5.0035



39.3538, -2.0998, 2.1382

Same Dimension

The Same Dimension uses a secret algorithm to generate beautiful new colors.



52.2948, 3.5739, 17.1338



67.2409, 7.3596, 25.7211



61.5068, -11.5768, 24.8144



28.5287, -0.9377, 3.4529



33.4345, 19.6534, 20.9462



6.1189, 1.1774, 3.7910

Inverse Universe

The Inverse Universe completely reimagines the original color for something new.



48.7425, -4.9804, -15.7110



61.5620, -6.1847, -26.9181



39.9640, 10.6341, -30.8761



28.1015, -1.9824, -0.4801



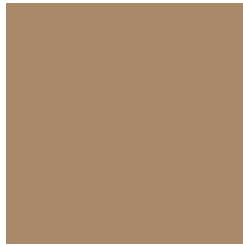
26.5041, 6.0297, -46.1443



5.2282, -0.9363, -4.5136

Previews

White Background



This preview shows how the HunterLab color 52.2936, 3.5759, 17.1331 looks on a white background.

Color Contrast Check

Large Text (above 18pt) WCAG AA ✓ Pass

Any Text WCAG AA × Fail

Large Text (above 18pt) WCAG AAA × Fail

Any Text WCAG AAA × Fail

Black Background



This preview shows how the HunterLab color 52.2936, 3.5759, 17.1331 looks on a black background.

Color Contrast Check

Large Text (above 18pt) WCAG AA ✓ Pass

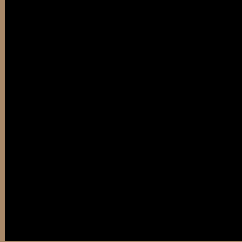
Any Text WCAG AA ✓ Pass

Large Text (above 18pt) WCAG AAA ✓ Pass

Any Text WCAG AAA × Fail

If you want to check with other color combinations, try the [Color Contrast Checker](#).

HunterLab 52.2936, 3.5759, 17.1331 Background



This preview shows how black text looks on a background with the HunterLab color 52.2936, 3.5759, 17.1331.



This preview shows how white text looks on a background with the HunterLab color 52.2936, 3.5759,

Color Blindness Simulation

Color vision deficiency is a very complex topic, and I could not describe the different causes any better than Wikipedia does, so if you want to learn more, you should check out their [article about color blindness](#).

Dichromacy



Original Color

52.2936, 3.5759, 17.1331

Protanopia

52.4404, -4.4067, 16.1959

Deuteranopia

52.2936, 3.5759, 17.1331



Tritanopia

52.2874, 12.1656, 3.4138

Trichromacy



Original Color

52.2936, 3.5759, 17.1331

Protanomaly

52.4235, -1.5886, 16.5434

Deuteranomaly

52.2936, 3.5759, 17.1331

Tritanomaly

52.3506, 8.9755, 8.8934

Monochromacy



Original Color

52.2936, 3.5759, 17.1331

Achromatopsia

52.4097, -2.7964, 2.8475

Achromatomaly

52.2591, -1.1559, 8.6185

CSS Examples

Text

The CSS property to change the color of the text to HunterLab 52.2936, 3.5759, 17.1331 is called "color". The color property can be set on classes, ids or directly on the HTML element.

This example shows how text in the color `rgb(169, 137, 105)` looks like.

```
.text, #text, p{  
    color:rgb(169, 137, 105)  
}
```

If you want to add a text shadow in that color use the text-shadow property, you can generate a text shadow directly with our [CSS Text Shadow Generator](#).

Here you see how black text with a 4 pixel rgb(169, 137, 105) colored shadow looks like.

```
.shadow{ text-shadow: 4px 4px 2px rgb(169, 137, 105) }
```

Border

The CSS property to change the border of an element to HunterLab 52.2936, 3.5759, 17.1331 is called "border". The border property can be set on classes, ids or directly on the HTML element.

This example shows the color as border, it can be applied via the CSS property "border" or "border-color".

```
.border, #border, table{ border:4px solid rgb(169, 137, 105) }
```


If only the border color should be changed use the property `border-color`.

```
.border{ border-color:rgb(169, 137, 105) }
```

If you want to add a box shadow in that color use:

Here you see how a box with a 4 pixel `rgb(169, 137, 105)` colored shadow looks like.

```
.boxshadow{ -moz-box-shadow:4px 4px 4px  
4px rgb(169, 137, 105); -webkit-box-  
shadow:4px 4px 4px 4px rgb(169, 137, 105);  
box-shadow:4px 4px 4px 4px rgb(169, 137,  
105) }
```

Background

The CSS property to change the background color of an element to HunterLab 52.2936, 3.5759, 17.1331 is called "background". The background property can be set on classes, ids or directly on the HTML element.

```
.background, #background, body{  
background: rgb(169, 137, 105) }
```

If only the background color should be changed can be used:

```
.background{ background-color: rgb(169,  
137, 105) }
```

This example shows the color as background, it is applied via the CSS property "background".

To optimize and compress your CSS code, you can use our [online CSS compressor and optimizer](#) based on csstidy. If you want to create a linear or radial gradient as background or border, check our [CSS Gradient Generator](#).

Hey! You found this booklet interesting? Support Converting Colors with the new Membership Option!

The pro membership hides all ads, plus gives you double the colors in the color bucket, and more awesome pro features!

[Learn more, Memberships starting at \\$2.50/m!](#)

**Follow me
on Twitter!**

@ConvertingColor