

Converting Colors

HunterLab(52.2998, 8.1276,
17.2768)

Have a look what the booklet for
HunterLab(52.2998, 8.1276,
17.2768) contains.

HunterLab(52.3615, 7.9318, 17.2707)	3
<i>Conversions</i>	4
<i>Details</i>	6
<i>Harmonies</i>	12
<i>Previews</i>	24
<i>Color Blindness Simulation</i>	28
<i>CSS Examples</i>	31

Color

**HunterLab(52.3615, 7.9318,
17.2707)**

Conversions

Conversions Part 1

Format	Color
Hex	B18669
RGB	177, 134, 105
RGB Percent	69%, 53%, 41%
CMY	0.3059, 0.4745, 0.5882
CMYK	0.00, 0.24, 0.41, 0.31
HSL	24°, 32%, 55%
HSV	24°, 41%, 69%
XYZ	29.2064, 27.4173, 17.1174
YIQ	143.5510, 34.9370, 0.0970

Conversions

Conversions Part 2

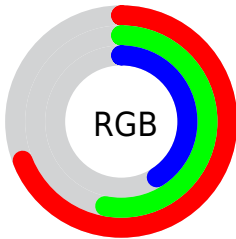
Format	Color
R_{YB}	177, 154, 105
Decimal	11634281
CIE _{Lab}	59.36, 12.58, 21.99
CIE _{LCh}	59, 25.332, 60.225
Yxy	27.4186, 0.3961, 0.3718
Android (android.graphics.Color)	4289824361 (0xFFB18669)
YUV	143.5510, -19.0056, 29.3348
Hunter-Lab	52.3615, 7.9318, 17.2707

Details

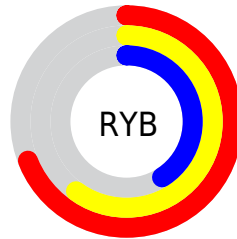
The HunterLab color **52.3615, 7.9318, 17.2707** is a dark color, and the websafe version is hex **CC9966**. A complement of this color would be **52.3034, -8.4261, -15.0696**, and the grayscale version is **52.6954, -2.8117, 2.8630**.

A 20% lighter version of the original color is **74.4536, 8.0467, 20.9721**, and **32.9348, 7.8202, 13.4627** is the 20% darker color. If you saturate the color by 10%, you get **49.3095, 11.4524, 19.6651**, and if you desaturate by 10%, it is **55.5794, 4.7000, 14.4445**.

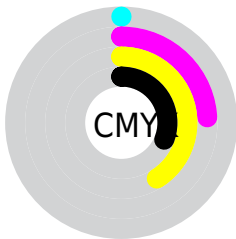
Distribution



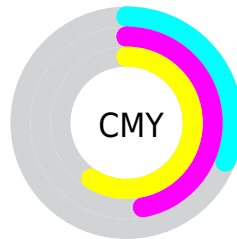
- Red (69%)
- Green (53%)
- Blue (41%)



- Red (69%)
- Yellow (60%)
- Blue (41%)



- Cyan (0%)
- Magenta (24%)
- Yellow (41%)
- Black (31%)



- Cyan (31%)
- Magenta (47%)
- Yellow (59%)

Brightness & Saturation Gradients

These gradients show how the HunterLab color 52.3615, 7.9318, 17.2707 changes by changing the brightness by 10 percent. The first figure shows a shift by +10% for each color and the second figure -10%.

Similar to the brightness gradients but the following saturation gradients show a change of the HunterLab color 52.3615, 7.9318, 17.2707 by changing the saturation by 10% instead.

■ 52.3615, 7.9318,
17.2707

■ 52.3615, 7.9318,
17.2707

170.1993, 6.4702,
32.7758

■ 42.2940, 7.7889,
15.3689

■ 74.5351, 7.9886,
20.8955

■ 32.9689, 7.5601,
13.3754

■ 86.5616, 7.9220,
22.6467

■ 24.4523, 7.2279,
11.2529

■ 99.1733, 7.7991,
24.3706

■ 16.8297, 6.7708,
8.9752

■ 112.3441, 7.6241,
26.0741

■ 10.2219, 6.1570,
7.1553

126.0513, 7.4009,
27.7626

0.0000, INF, NaN

0.0000, NaN, NaN

140.2747, 7.1324,

29.4402

0.0000, NaN, NaN

154.9961, 6.8214,
31.1104

0.0000, NaN, NaN

■ 52.3615, 7.9318,
17.2707

■ 52.3615, 7.9318,
17.2707

■ 49.3095, 11.4524,
19.6651

■ 55.5794, 4.7000,
14.4445

■ 46.4375, 15.2712,
21.5678

■ 58.9434, 1.7508,
11.2381

■ 43.7664, 19.3730,
22.9225

■ 62.4403, -0.9358,
7.6999

■ 41.3165, 23.7214,
23.6807

■ 66.0576, -3.3806,
3.8714

■ 39.1076, 28.2470,
23.8191

■ 69.7844, -5.6047,
-0.2119

■ 37.2720, 32.4908,
23.5356

■ 73.6109, -7.6287,
-4.5199

■ 77.5290, -9.4719,
-9.0273

■ 81.5314, -11.1522,
-13.7126

■ 85.2524, -14.6918,
-13.5214

Harmonies

Analogous

The Analogous color harmony consists of three colors that are next to each other on the color wheel.



52.3627, 16.3996, 11.8584



52.3615, 7.9318, 17.2707



52.3627, -2.8784, 19.0176

Triad

The Triadic color harmony groups three colors that are evenly spaced from another and form a triangle on the color wheel.



52.3627, 7.9296, 17.2714



52.3627, -22.0024, 2.7725



52.3627, 8.0823, -17.2732

Complementary

The Complementary color scheme is a pair of colors which are on the opposite of each other on the color wheel.



52.3615, 7.9318, 17.2707



52.3034, -8.4261, -15.0696

Split Complementary

Split-complementary colors differ from the complementary color scheme. The scheme consists of three colors, the original color and two neighbors of the complement color.



52.3627, -2.7151, -21.0267



52.3615, 7.9318, 17.2707



52.3627, -19.5727, -8.1116

Square

The Square scheme is like the rectangle color scheme, but the four colors are evenly spaced on the color wheel.



52.3627, 7.9296, 17.2714



52.3627, -19.6437, 11.7488



52.3627, -12.7237, -17.3793



52.3627, 16.4926, -7.9496

Rectangle

The Rectangle color scheme consists of four colors that form a rectangle on the color wheel.



52.3615, 7.9318, 17.2707



52.3627, -9.7902, 18.2158



52.3627, -12.7237, -17.3793



52.3627, 4.5841, -19.3035

Sweetspot

The Sweet Spot groups the original color and five complimentary colors.



52.3627, 7.9296, 17.2714



82.8362, -0.7247, 11.0544



46.4705, 28.3199, -6.7215



38.2855, -0.1323, 5.4305



94.3401, -5.0338, 5.1257



41.3092, -2.2042, 2.2444

Same Dimension

The Same Dimension uses a secret algorithm to generate beautiful new colors.



52.3627, 7.9296, 17.2714



66.3237, 14.9151, 26.0723



62.4833, -9.3059, 25.6571



30.0808, -0.6117, 3.4416



31.9027, 27.2001, 20.1345



6.6036, 2.6304, 4.1152

Inverse Universe

The Inverse Universe completely reimagines the original color for something new.



52.3034, -8.4261, -15.0696



66.2073, -11.4251, -26.1154



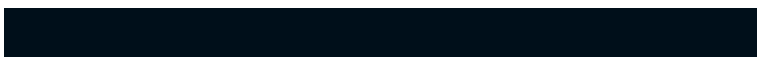
42.2025, 8.9534, -32.2748



30.0761, -2.4843, -0.2509



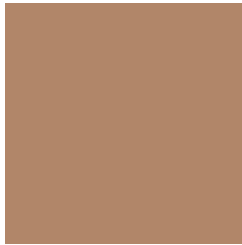
31.3766, -0.7374, -37.6263



6.4845, -1.5764, -4.7020

Previews

White Background



This preview shows how the HunterLab color 52.3615, 7.9318, 17.2707 looks on a white background.

Color Contrast Check

Large Text (above 18pt) WCAG AA ✓ Pass

Any Text WCAG AA × Fail

Large Text (above 18pt) WCAG AAA × Fail

Any Text WCAG AAA × Fail

Black Background



This preview shows how the HunterLab color 52.3615, 7.9318, 17.2707 looks on a black background.

Color Contrast Check

Large Text (above 18pt) WCAG AA ✓ Pass

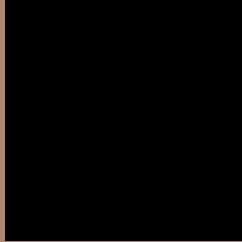
Any Text WCAG AA ✓ Pass

Large Text (above 18pt) WCAG AAA ✓ Pass

Any Text WCAG AAA × Fail

If you want to check with other color combinations, try the [Color Contrast Checker](#).

HunterLab 52.3615, 7.9318, 17.2707 Background



This preview shows how black text looks on a background with the HunterLab color 52.3615, 7.9318, 17.2707.



This preview shows how white text looks on a background with the HunterLab color 52.3615, 7.9318,

Color Blindness Simulation

Color vision deficiency is a very complex topic, and I could not describe the different causes any better than Wikipedia does, so if you want to learn more, you should check out their [article about color blindness](#).

Dichromacy



Original Color

52.3615, 7.9318, 17.2707

Protanopia

52.4608, -4.2942, 15.8995

Deuteranopia

52.3802, 3.8271, 17.5191



Tritanopia

52.2187, 15.7230, 4.7183

Trichromacy



Original Color

52.3615, 7.9318, 17.2707

Protanomaly

52.4598, 0.0153, 16.2912

Deuteranomaly

52.4328, 5.3907, 17.5938

Tritanomaly

52.2959, 12.7148, 9.6831

Monochromacy



Original Color

52.3615, 7.9318, 17.2707

Achromatopsia

52.8104, -2.8178, 2.8693

Achromatomaly

52.3792, 0.7491, 8.3834

CSS Examples

Text

The CSS property to change the color of the text to HunterLab 52.3615, 7.9318, 17.2707 is called "color". The color property can be set on classes, ids or directly on the HTML element.

This example shows how text in the color `rgb(177, 134, 105)` looks like.

```
.text, #text, p{  
    color:rgb(177, 134, 105)  
}
```

If you want to add a text shadow in that color use the text-shadow property, you can generate a text shadow directly with our [CSS Text Shadow Generator](#).

Here you see how black text with a 4 pixel rgb(177, 134, 105) colored shadow looks like.

```
.shadow{ text-shadow: 4px 4px 2px rgb(177, 134, 105) }
```

Border

The CSS property to change the border of an element to HunterLab 52.3615, 7.9318, 17.2707 is called "border". The border property can be set on classes, ids or directly on the HTML element.

This example shows the color as border, it can be applied via the CSS property "border" or "border-color".

```
.border, #border, table{ border:4px solid rgb(177, 134, 105) }
```


If only the border color should be changed use the property `border-color`.

```
.border{ border-color:rgb(177, 134, 105) }
```

If you want to add a box shadow in that color use:

Here you see how a box with a 4 pixel `rgb(177, 134, 105)` colored shadow looks like.

```
.boxshadow{ -moz-box-shadow:4px 4px 4px  
4px rgb(177, 134, 105); -webkit-box-  
shadow:4px 4px 4px 4px rgb(177, 134, 105);  
box-shadow:4px 4px 4px 4px rgb(177, 134,  
105) }
```

Background

The CSS property to change the background color of an element to HunterLab 52.3615, 7.9318, 17.2707 is called "background". The background property can be set on classes, ids or directly on the HTML element.

```
.background, #background, body{  
background: rgb(177, 134, 105) }
```

If only the background color should be changed can be used:

```
.background{ background-color: rgb(177,  
134, 105) }
```

This example shows the color as background, it is applied via the CSS property "background".

To optimize and compress your CSS code, you can use our [online CSS compressor and optimizer](#) based on csstidy. If you want to create a linear or radial gradient as background or border, check our [CSS Gradient Generator](#).

Hey! You found this booklet interesting? Support Converting Colors with the new Membership Option!

The pro membership hides all ads, plus gives you double the colors in the color bucket, and more awesome pro features!

[Learn more, Memberships starting at \\$2.50/m!](#)

**Follow me
on Twitter!**

@ConvertingColor