

Converting Colors

HunterLab(52.3327, 4.1110,
22.9889)

Have a look what the booklet for
HunterLab(52.3327, 4.1110,
22.9889) contains.

HunterLab(52.2942, 4.2124, 23.0188)	3
<i>Conversions</i>	4
<i>Details</i>	6
<i>Harmonies</i>	12
<i>Previews</i>	24
<i>Color Blindness Simulation</i>	28
<i>CSS Examples</i>	31

Color

**HunterLab(52.2942, 4.2124,
23.0188)**

Conversions

Conversions Part 1

Format	Color
Hex	AF8853
RGB	175, 136, 83
RGB Percent	69%, 53%, 33%
CMY	0.3137, 0.4666, 0.6745
CMYK	0.00, 0.22, 0.53, 0.31
HSL	35°, 37%, 51%
HSV	35°, 53%, 69%
XYZ	28.0447, 27.3468, 11.9840
YIQ	141.6190, 40.2570, -8.2150

Conversions

Conversions Part 2

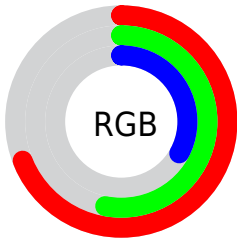
Format	Color
R_{YB}	151, 175, 83
Decimal	11503699
CIE _{Lab}	59.30, 8.32, 33.97
CIE _{LCh}	59, 34.976, 76.232
Yxy	27.3482, 0.4162, 0.4059
Android (android.graphics.Color)	4289693779 (0xFFAF8853)
YUV	141.6190, -28.8992, 29.2751
Hunter-Lab	52.2942, 4.2124, 23.0188

Details

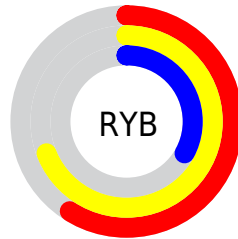
The HunterLab color $52.2942, 4.2124, 23.0188$ is a dark color, and the websafe version is hex $CC9966$. A complement of this color would be $43.4194, -0.8979, -28.6427$, and the grayscale version is $51.9586, -2.7724, 2.8230$.

A 20% lighter version of the original color is $74.4581, 4.2000, 27.9946$, and $32.8269, 4.4981, 17.2919$ is the 20% darker color. If you saturate the color by 10%, you get $50.0933, 6.5655, 24.9725$, and if you desaturate by 10%, it is $54.6038, 2.1530, 20.4544$.

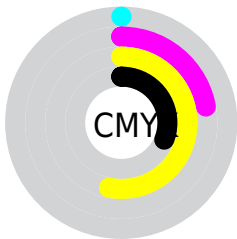
Distribution



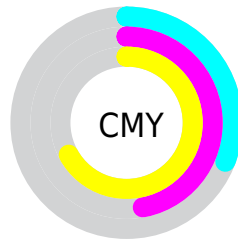
- Red (69%)
- Green (53%)
- Blue (33%)



- Red (59%)
- Yellow (69%)
- Blue (33%)



- Cyan (0%)
- Magenta (22%)
- Yellow (53%)
- Black (31%)



- Cyan (31%)
- Magenta (47%)
- Yellow (67%)

Brightness & Saturation Gradients

These gradients show how the HunterLab color 52.2942, 4.2124, 23.0188 changes by changing the brightness by 10 percent. The first figure shows a shift by +10% for each color and the second figure -10%.

Similar to the brightness gradients but the following saturation gradients show a change of the HunterLab color 52.2942, 4.2124, 23.0188 by changing the saturation by 10% instead.

■ 52.2942, 4.2124,
23.0188

■ 52.2942, 4.2124,
23.0188

170.0996, 1.1483,
44.0327

■ 42.2313, 4.2915,
20.2809

■ 74.4594, 3.8598,
28.1292

■ 32.9112, 4.2991,
17.3719

■ 86.4820, 3.6028,
30.5500

■ 24.4001, 4.2206,
14.2390

■ 99.0900, 3.2974,
32.9044

■ 16.7837, 4.0379,
11.7486

■ 112.2573, 2.9470,
35.2047

■ 10.1829, 3.7227,
7.1280

■ 125.9611, 2.5545,
37.4606

0.0000, INF, NaN

0.0000, NaN, NaN

140.1813, 2.1225,

39.6799

0.0000, NaN, NaN

154.8995, 1.6532,
41.8689

0.0000, NaN, NaN

■ 52.2942, 4.2124,
23.0188

■ 52.2942, 4.2124,
23.0188

■ 50.0933, 6.5655,
24.9725

■ 54.6038, 2.1530,
20.4544

■ 48.0034, 9.2188,
26.2869

■ 57.0121, 0.3873,
17.3125

■ 46.0315, 12.1600,
26.9516

■ 59.5140, -1.0978,
13.6327

■ 44.1815, 15.3648,
26.9824

■ 62.1035, -2.3163,
9.4551

■ 42.8801, 17.8550,
26.7351

■ 64.7751, -3.2836,
4.8187

■ 67.5233, -4.0155,
-0.2392

■ 70.3433, -4.5281,
-5.6839

■ 73.2306, -4.8368,
-11.4833

■ 76.1810, -4.9565,
-17.6085

Harmonies

Analogous

The Analogous color harmony consists of three colors that are next to each other on the color wheel.



52.2955, 18.5654, 18.9667



52.2942, 4.2124, 23.0188



52.2955, -10.5724, 22.8532

Triad

The Triadic color harmony groups three colors that are evenly spaced from another and form a triangle on the color wheel.



52.2955, 4.2101, 23.0194



52.2955, -27.5832, -5.3699



52.2955, 19.5757, -19.7655

Complementary

The Complementary color scheme is a pair of colors which are on the opposite of each other on the color wheel.



52.2942, 4.2124, 23.0188



43.4194, -0.8979, -28.6427

Split Complementary

Split-complementary colors differ from the complementary color scheme. The scheme consists of three colors, the original color and two neighbors of the complement color.



52.2955, 5.4691, -30.7147



52.2942, 4.2124, 23.0188



52.2955, -21.1932, -20.9415

Square

The Square scheme is like the rectangle color scheme, but the four colors are evenly spaced on the color wheel.



52.2955, 4.2101, 23.0194



52.2955, -27.8395, 8.9332



52.2955, -9.4463, -31.1970



52.2955, 28.0857, -4.0728

Rectangle

The Rectangle color scheme consists of four colors that form a rectangle on the color wheel.



52.2942, 4.2124, 23.0188



52.2955, -18.6906, 20.4204



52.2955, -9.4463, -31.1970



52.2955, 15.2643, -24.2941

Sweetspot

The Sweet Spot groups the original color and five complimentary colors.



52.2955, 4.2101, 23.0194



81.8138, -2.5359, 14.7997



40.8992, 34.6530, -1.2935



38.2418, -1.0419, 7.5093



94.3401, -5.0338, 5.1257



41.3092, -2.2042, 2.2444

Same Dimension

The Same Dimension uses a secret algorithm to generate beautiful new colors.



52.2955, 4.2101, 23.0194



66.6040, 9.2999, 33.7426



63.0116, -16.1506, 30.8442



29.5849, -1.2497, 3.7522



36.4573, 14.7480, 22.7230



6.8930, 0.8590, 4.2625

Inverse Universe

The Inverse Universe completely reimagines the original color for something new.



43.4194, -0.8979, -28.6427



52.4862, 1.9200, -49.6774



33.7823, 19.9483, -50.0150



28.8000, -1.7617, -0.7152



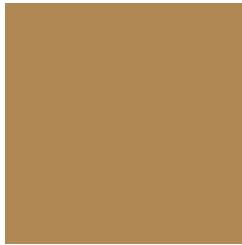
24.2023, 11.9418, -56.0298



5.2234, -0.2646, -5.9574

Previews

White Background



This preview shows how the HunterLab color 52.2942, 4.2124, 23.0188 looks on a white background.

Color Contrast Check

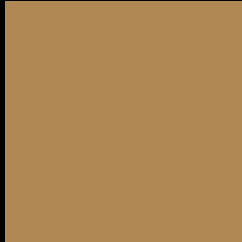
Large Text (above 18pt) WCAG AA ✓ Pass

Any Text WCAG AA × Fail

Large Text (above 18pt) WCAG AAA × Fail

Any Text WCAG AAA × Fail

Black Background



This preview shows how the HunterLab color 52.2942, 4.2124, 23.0188 looks on a black background.

Color Contrast Check

Large Text (above 18pt) WCAG AA ✓ Pass

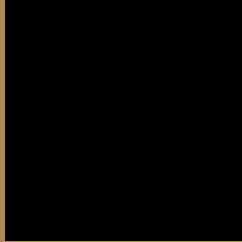
Any Text WCAG AA ✓ Pass

Large Text (above 18pt) WCAG AAA ✓ Pass

Any Text WCAG AAA × Fail

If you want to check with other color combinations, try the [Color Contrast Checker](#).

HunterLab 52.2942, 4.2124, 23.0188 Background



This preview shows how black text looks on a background with the HunterLab color 52.2942, 4.2124, 23.0188.



This preview shows how white text looks on a background with the HunterLab color 52.2942, 4.2124,

Color Blindness Simulation

Color vision deficiency is a very complex topic, and I could not describe the different causes any better than Wikipedia does, so if you want to learn more, you should check out their [article about color blindness](#).

Dichromacy



Original Color

52.2942, 4.2124, 23.0188

Protanopia

52.3304, -5.5780, 22.1731

Deuteranopia

52.1838, 3.8430, 22.9247



Tritanopia

52.2187, 15.7230, 4.7183

Trichromacy



Original Color

52.2942, 4.2124, 23.0188

Protanomaly

52.1523, -1.8593, 22.3328

Deuteranomaly

52.1838, 3.8430, 22.9247

Tritanomaly

52.2488, 10.8537, 12.5808

Monochromacy



Original Color

52.2942, 4.2124, 23.0188

Achromatopsia

52.0094, -2.7751, 2.8258

Achromatomaly

51.9679, -1.1040, 11.3652

CSS Examples

Text

The CSS property to change the color of the text to HunterLab 52.2942, 4.2124, 23.0188 is called "color". The color property can be set on classes, ids or directly on the HTML element.

This example shows how text in the color `rgb(175, 136, 83)` looks like.

```
.text, #text, p{  
    color:rgb(175, 136, 83)  
}
```

If you want to add a text shadow in that color use the text-shadow property, you can generate a text shadow directly with our [CSS Text Shadow Generator](#).

Here you see how black text with a 4 pixel rgb(175, 136, 83) colored shadow looks like.

```
.shadow{ text-shadow: 4px 4px 2px rgb(175, 136, 83) }
```

Border

The CSS property to change the border of an element to HunterLab 52.2942, 4.2124, 23.0188 is called "border". The border property can be set on classes, ids or directly on the HTML element.

This example shows the color as border, it can be applied via the CSS property "border" or "border-color".

```
.border, #border, table{ border:4px solid rgb(175, 136, 83) }
```


If only the border color should be changed use the property border-color.

```
.border{ border-color:rgb(175, 136, 83) }
```

If you want to add a box shadow in that color use:

Here you see how a box with a 4 pixel rgb(175, 136, 83) colored shadow looks like.

```
.boxshadow{ -moz-box-shadow:4px 4px 4px  
4px rgb(175, 136, 83); -webkit-box-  
shadow:4px 4px 4px 4px rgb(175, 136, 83);  
box-shadow:4px 4px 4px 4px rgb(175, 136,  
83) }
```

Background

The CSS property to change the background color of an element to HunterLab 52.2942, 4.2124, 23.0188 is called "background". The background property can be set on classes, ids or directly on the HTML element.

```
.background, #background, body{  
background: rgb(175, 136, 83) }
```

If only the background color should be changed can be used:

```
.background{ background-color: rgb(175,  
136, 83) }
```

This example shows the color as background, it is applied via the CSS property "background".

To optimize and compress your CSS code, you can use our [online CSS compressor and optimizer](#) based on csstidy. If you want to create a linear or radial gradient as background or border, check our [CSS Gradient Generator](#).

Hey! You found this booklet interesting? Support Converting Colors with the new Membership Option!

The pro membership hides all ads, plus gives you double the colors in the color bucket, and more awesome pro features!

[Learn more, Memberships starting at \\$2.50/m!](#)

**Follow me
on Twitter!**

@ConvertingColor