

Converting Colors

HunterLab(52.3391, 14.3384,
1.4069)

Have a look what the booklet for
HunterLab(52.3391, 14.3384,
1.4069) contains.

HunterLab(52.3957, 14.1282, 1.2975)	3
<i>Conversions</i>	4
<i>Details</i>	6
<i>Harmonies</i>	12
<i>Previews</i>	24
<i>Color Blindness Simulation</i>	28
<i>CSS Examples</i>	31

Color

**HunterLab(52.3957, 14.1282,
1.2975)**

Conversions

Conversions Part 1

Format	Color
Hex	AF8393
RGB	175, 131, 147
RGB Percent	69%, 51%, 58%
CMY	0.3137, 0.4863, 0.4235
CMYK	0.00, 0.25, 0.16, 0.31
HSL	338°, 22%, 60%
HSV	338°, 25%, 69%
XYZ	31.0619, 27.4531, 31.2655
YIQ	145.9800, 21.0880, 14.3040

Conversions

Conversions Part 2

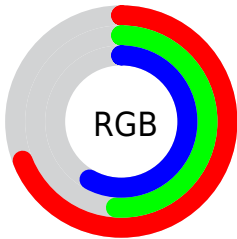
Format	Color
RYB	175, 131, 147
Decimal	11502483
CIELab	59.39, 19.44, -1.96
CIELCh	59, 19.536, 354.241
Yxy	27.4543, 0.3460, 0.3058
Android (android.graphics.Color)	4289692563 (0xFFAF8393)
YUV	145.9800, 0.5029, 25.4505
Hunter-Lab	52.3957, 14.1282, 1.2975

Details

The HunterLab color $52.3957, 14.1282, 1.2975$ is a light color, and the websafe version is hex $CC9999$. A complement of this color would be $61.6353, -18.2310, 6.1057$, and the grayscale version is $53.5985, -2.8599, 2.9121$.

A 20% lighter version of the original color is $74.4896, 14.9509, 2.1790$, and $32.9932, 13.2771, 0.2395$ is the 20% darker color. If you saturate the color by 10%, you get $47.7606, 21.3463, 0.9513$, and if you desaturate by 10%, it is $57.3809, 7.0048, 1.9922$.

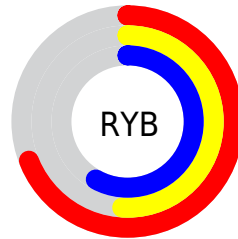
Distribution



Red (69%)

Green (51%)

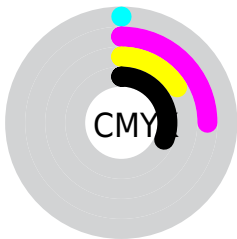
Blue (58%)



Red (69%)

Yellow (51%)

Blue (58%)

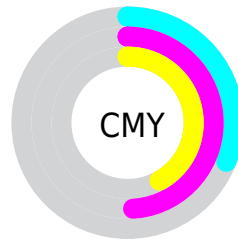


Cyan (0%)

Magenta (25%)

Yellow (16%)

Black (31%)



Cyan (31%)

Magenta (49%)

Yellow (42%)

Brightness & Saturation Gradients

These gradients show how the HunterLab color 52.3957, 14.1282, 1.2975 changes by changing the brightness by 10 percent. The first figure shows a shift by +10% for each color and the second figure -10%.

Similar to the brightness gradients but the following saturation gradients show a change of the HunterLab color 52.3957, 14.1282, 1.2975 by changing the saturation by 10% instead.

■ 52.3957, 14.1282,
1.2975

■ 52.3957, 14.1282,
1.2975

170.2499, 15.1835,
6.9848

■ 42.3258, 13.6436,
0.8537

■ 74.5735, 14.8218,
2.3172

■ 32.9982, 13.0541,
0.4573

■ 86.6020, 15.0533,
2.8849

■ 24.4788, 12.3406,
0.1149

■ 99.2155, 15.2169,
3.4885

■ 16.8531, 11.4811,
-0.1653

112.3882, 15.3181,
4.1259

■ 10.2417, 10.4520,
-0.3711

126.0971, 15.3617,
4.7956

0.0000, INF, -NF

0.0000, NaN, NaN

140.3221, 15.3516,

5.4962

0.0000, NaN, NaN

155.0452, 15.2912,
6.2263

0.0000, NaN, NaN

■ 52.3957, 14.1282,
1.2975

■ 52.3957, 14.1282,
1.2975

■ 47.7606, 21.3463,
0.9513

■ 57.3809, 7.0048,
1.9922

■ 43.5364, 28.5534,
1.0289

■ 62.6601, 0.0300,
2.9658

■ 39.7998, 35.5382,
1.6134

■ 68.1920, -6.7860,
4.1659

■ 36.6336, 41.9622,
2.7728

■ 73.9427, -13.4499,
5.5501

■ 34.1166, 47.3625,
4.5272

■ 79.8847, -19.9773,
7.0860

■ 32.3029, 51.2416,
6.8089

■ 85.9962, -26.3866,
8.7481

■ 31.1910, 53.2736,
9.4377

■ 92.2592, -32.6962,
10.5168

■ 30.7895, 53.9165,
10.6824

■ 93.1106, -31.4439,
6.2440

■ 93.4687, -29.3845,
1.1412

Harmonies

Analogous

The Analogous color harmony consists of three colors that are next to each other on the color wheel.



52.3969, 10.8567, -6.8662



52.3957, 14.1282, 1.2975



52.3969, 12.6365, 8.7355

Triad

The Triadic color harmony groups three colors that are evenly spaced from another and form a triangle on the color wheel.



52.3969, 14.1264, 1.2985



52.3969, -9.2200, 14.9400



52.3969, -11.8424, -11.0950

Complementary

The Complementary color scheme is a pair of colors which are on the opposite of each other on the color wheel.



52.3957, 14.1282, 1.2975



61.6353, -18.2310, 6.1057

Split Complementary

Split-complementary colors differ from the complementary color scheme. The scheme consists of three colors, the original color and two neighbors of the complement color.



52.3969, -16.6309, -3.8041



52.3957, 14.1282, 1.2975



52.3969, -15.1844, 11.0048

Square

The Square scheme is like the rectangle color scheme, but the four colors are evenly spaced on the color wheel.



52.3969, 14.1264, 1.2985



52.3969, -1.1800, 15.8706



52.3969, -17.8152, 4.3596



52.3969, -4.3977, -14.7046

Rectangle

The Rectangle color scheme consists of four colors that form a rectangle on the color wheel.



52.3957, 14.1282, 1.2975



52.3969, 9.1892, 12.4160



52.3969, -17.8152, 4.3596



52.3969, -13.7970, -8.9432

Sweetspot

The Sweet Spot groups the original color and five complimentary colors.



52.3969, 14.1264, 1.2985



81.7003, 2.8159, 3.5438



51.6589, 13.6959, -14.4772



38.0187, 1.9800, 1.5762



94.3401, -5.0338, 5.1257



41.3092, -2.2042, 2.2444

Same Dimension

The Same Dimension uses a secret algorithm to generate beautiful new colors.



52.3969, 14.1264, 1.2985



66.7214, 24.0915, 1.4239



53.4858, 8.8679, 9.3084



28.3931, 1.3672, 1.1891



26.0764, 45.7035, 8.7351



4.4705, 8.0649, -0.2820

Inverse Universe

The Inverse Universe completely reimagines the original color for something new.



52.3969, 14.1264, 1.2985



66.7214, 24.0915, 1.4239



60.2882, -12.7978, -2.9608



28.3931, 1.3672, 1.1891



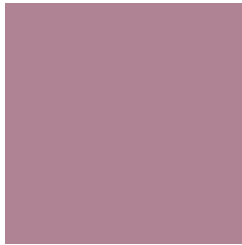
26.0764, 45.7035, 8.7351



4.4705, 8.0649, -0.2820

Previews

White Background



This preview shows how the HunterLab color 52.3957, 14.1282, 1.2975 looks on a white background.

Color Contrast Check

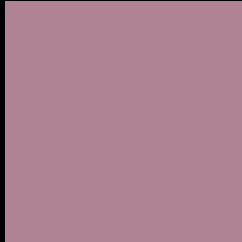
Large Text (above 18pt) WCAG AA ✓ Pass

Any Text WCAG AA × Fail

Large Text (above 18pt) WCAG AAA × Fail

Any Text WCAG AAA × Fail

Black Background



This preview shows how the HunterLab color 52.3957, 14.1282, 1.2975 looks on a black background.

Color Contrast Check

Large Text (above 18pt) WCAG AA ✓ Pass

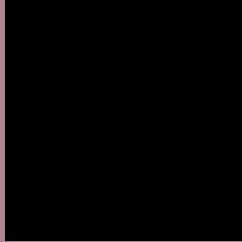
Any Text WCAG AA ✓ Pass

Large Text (above 18pt) WCAG AAA ✓ Pass

Any Text WCAG AAA × Fail

If you want to check with other color combinations, try the [Color Contrast Checker](#).

HunterLab 52.3957, 14.1282, 1.2975 Background



This preview shows how black text looks on a background with the HunterLab color 52.3957, 14.1282, 1.2975.



This preview shows how white text looks on a background with the HunterLab color 52.3957, 14.1282,

Color Blindness Simulation

Color vision deficiency is a very complex topic, and I could not describe the different causes any better than Wikipedia does, so if you want to learn more, you should check out their [article about color blindness](#).

Dichromacy



Original Color

52.3957, 14.1282, 1.2975

Protanopia

52.4583, -0.4959, -2.2374

Deuteranopia

52.5438, 3.6149, 1.7549



Tritanopia

52.3967, 12.5143, 3.5478

Trichromacy



Original Color

52.3957, 14.1282, 1.2975

Protanomaly

52.3258, 4.6017, -0.8514

Deuteranomaly

52.4120, 7.3740, 1.6623

Tritanomaly

52.4546, 12.8140, 2.7227

Monochromacy



Original Color

52.3957, 14.1282, 1.2975

Achromatopsia

53.6135, -2.8607, 2.9129

Achromatomaly

53.1913, 2.9511, 2.5158

CSS Examples

Text

The CSS property to change the color of the text to HunterLab 52.3957, 14.1282, 1.2975 is called "color". The color property can be set on classes, ids or directly on the HTML element.

This example shows how text in the color `rgb(175, 131, 147)` looks like.

```
.text, #text, p{  
    color:rgb(175, 131, 147)  
}
```

If you want to add a text shadow in that color use the text-shadow property, you can generate a text shadow directly with our [CSS Text Shadow Generator](#).

Here you see how black text with a 4 pixel rgb(175, 131, 147) colored shadow looks like.

```
.shadow{ text-shadow: 4px 4px 2px rgb(175, 131, 147) }
```

Border

The CSS property to change the border of an element to HunterLab 52.3957, 14.1282, 1.2975 is called "border". The border property can be set on classes, ids or directly on the HTML element.

This example shows the color as border, it can be applied via the CSS property "border" or "border-color".

```
.border, #border, table{ border:4px solid rgb(175, 131, 147) }
```


If only the border color should be changed use the property `border-color`.

```
.border{ border-color:rgb(175, 131, 147) }
```

If you want to add a box shadow in that color use:

Here you see how a box with a 4 pixel `rgb(175, 131, 147)` colored shadow looks like.

```
.boxshadow{ -moz-box-shadow:4px 4px 4px  
4px rgb(175, 131, 147); -webkit-box-  
shadow:4px 4px 4px 4px rgb(175, 131, 147);  
box-shadow:4px 4px 4px 4px rgb(175, 131,  
147) }
```

Background

The CSS property to change the background color of an element to HunterLab 52.3957, 14.1282, 1.2975 is called "background". The background property can be set on classes, ids or directly on the HTML element.

```
.background, #background, body{  
background: rgb(175, 131, 147) }
```

If only the background color should be changed can be used:

```
.background{ background-color: rgb(175,  
131, 147) }
```

This example shows the color as background, it is applied via the CSS property "background".

To optimize and compress your CSS code, you can use our [online CSS compressor and optimizer](#) based on csstidy. If you want to create a linear or radial gradient as background or border, check our [CSS Gradient Generator](#).

Hey! You found this booklet interesting? Support Converting Colors with the new Membership Option!

The pro membership hides all ads, plus gives you double the colors in the color bucket, and more awesome pro features!

[Learn more, Memberships starting at \\$2.50/m!](#)

**Follow me
on Twitter!**

@ConvertingColor