

Converting Colors

HunterLab(52.4073, 10.8521,
14.3646)

Have a look what the booklet for
HunterLab(52.4073, 10.8521,
14.3646) contains.

HunterLab(52.3648, 11.0030, 14.4346)	3
<i>Conversions</i>	4
<i>Details</i>	6
<i>Harmonies</i>	12
<i>Previews</i>	24
<i>Color Blindness Simulation</i>	28
<i>CSS Examples</i>	31

Color

**HunterLab(52.3648, 11.0030,
14.4346)**

Conversions

Conversions Part 1

Format	Color
Hex	B48472
RGB	180, 132, 114
RGB Percent	71%, 52%, 45%
CMY	0.2941, 0.4823, 0.5529
CMYK	0.00, 0.27, 0.37, 0.29
HSL	16°, 31%, 58%
HSV	16°, 37%, 71%
XYZ	30.1109, 27.4207, 19.6253
YIQ	144.3000, 34.3860, 4.5780

Conversions

Conversions Part 2

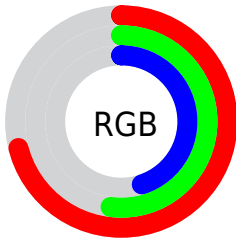
Format	Color
R _Y B	180, 139, 114
Decimal	11830386
CIE Lab	59.36, 16.01, 16.96
CIE LCh	59, 23.326, 46.644
Yxy	27.4220, 0.3903, 0.3554
Android (android.graphics.Color)	4290020466 (0xFFB48472)
YUV	144.3000, -14.9379, 31.3089
Hunter-Lab	52.3648, 11.0030, 14.4346

Details

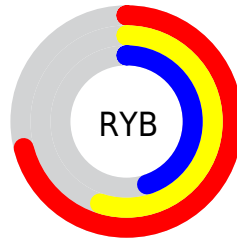
The HunterLab color **52.3648, 11.0030, 14.4346** is a dark color, and the websafe version is hex **CC9999**. A complement of this color would be **57.1946, -12.4003, -9.7360**, and the grayscale version is **52.9801, -2.8269, 2.8785**.

A 20% lighter version of the original color is **74.4685, 11.4784, 17.3650**, and **32.9599, 10.5839, 11.2233** is the 20% darker color. If you saturate the color by 10%, you get **48.7044, 15.6286, 16.8132**, and if you desaturate by 10%, it is **56.2574, 6.6592, 11.7751**.

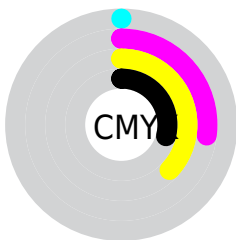
Distribution



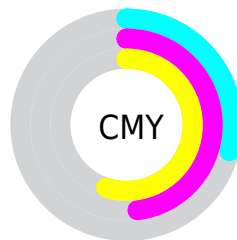
- Red (71%)
- Green (52%)
- Blue (45%)



- Red (71%)
- Yellow (55%)
- Blue (45%)



- Cyan (0%)
- Magenta (27%)
- Yellow (37%)
- Black (29%)



- Cyan (29%)
- Magenta (48%)
- Yellow (55%)

Brightness & Saturation Gradients

These gradients show how the HunterLab color 52.3648, 11.0030, 14.4346 changes by changing the brightness by 10 percent. The first figure shows a shift by +10% for each color and the second figure -10%.

Similar to the brightness gradients but the following saturation gradients show a change of the HunterLab color 52.3648, 11.0030, 14.4346 by changing the saturation by 10% instead.

■ 52.3648, 11.0030,
14.4346

■ 52.3648, 11.0030,
14.4346

170.2042, 10.8129,
27.7301

■ 42.2971, 10.6862,
12.8682

■ 74.5388, 11.3824,
17.4651

■ 32.9717, 10.2733,
11.2442

■ 86.5655, 11.4667,
18.9484

■ 24.4548, 9.7455,
9.5353

■ 99.1774, 11.4885,
20.4198

■ 16.8320, 9.0802,
7.6956

■ 112.3484, 11.4530,
21.8840

■ 10.2238, 8.2474,
7.1567

126.0558, 11.3644,
23.3447

0.0000, INF, NaN

0.0000, NaN, NaN

140.2793, 11.2261,

24.8045

0.0000, NaN, NaN

155.0009, 11.0415,
26.2657

0.0000, NaN, NaN

■ 52.3648, 11.0030,
14.4346

■ 52.3648, 11.0030,
14.4346

■ 48.7044, 15.6286,
16.8132

■ 56.2574, 6.6592,
11.7751

■ 45.3050, 20.5298,
18.8432

■ 60.3507, 2.5968,
8.8857

■ 42.2041, 25.6583,
20.4493

■ 64.6220, -1.2045,
5.8090

■ 39.4411, 30.9204,
21.5517

■ 69.0514, -4.7678,
2.5777

■ 37.0552, 36.1595,
22.0835

■ 73.6220, -8.1176,
-0.7831

■ 35.0789, 41.1441,
22.0445

■ 78.3195, -11.2778,
-4.2540

■ 34.5086, 42.6743,
22.0111

■ 83.1320, -14.2705,
-7.8200

■ 87.9385, -17.7383,
-9.9099

■ 92.2923, -24.1922,
-4.3310

Harmonies

Analogous

The Analogous color harmony consists of three colors that are next to each other on the color wheel.



52.3660, 16.8304, 7.8015



52.3648, 11.0030, 14.4346



52.3660, 1.6980, 17.6503

Triad

The Triadic color harmony groups three colors that are evenly spaced from another and form a triangle on the color wheel.



52.3660, 11.0008, 14.4354



52.3660, -20.1473, 6.8841



52.3660, 2.7983, -17.7651

Complementary

The Complementary color scheme is a pair of colors which are on the opposite of each other on the color wheel.



52.3648, 11.0030, 14.4346



57.1946, -12.4003, -9.7360

Split Complementary

Split-complementary colors differ from the complementary color scheme. The scheme consists of three colors, the original color and two neighbors of the complement color.



52.3660, -7.1451, -18.1373



52.3648, 11.0030, 14.4346



52.3660, -19.9012, -2.6369

Square

The Square scheme is like the rectangle color scheme, but the four colors are evenly spaced on the color wheel.



52.3660, 11.0008, 14.4354



52.3660, -15.9987, 13.8724



52.3660, -15.2992, -12.1903



52.3660, 11.8580, -11.2524

Rectangle

The Rectangle color scheme consists of four colors that form a rectangle on the color wheel.



52.3648, 11.0030, 14.4346



52.3660, -4.9928, 17.9014



52.3660, -15.2992, -12.1903



52.3660, -0.5642, -18.6496

Sweetspot

The Sweet Spot groups the original color and five complimentary colors.



52.3660, 11.0008, 14.4354



84.3883, 0.6512, 9.7239



49.3570, 27.1732, -10.3968



38.8775, 0.6191, 4.7763



95.4677, -5.0939, 5.1869



42.2927, -2.2566, 2.2978

Same Dimension

The Same Dimension uses a secret algorithm to generate beautiful new colors.



52.3660, 11.0008, 14.4354



66.5007, 19.8232, 22.0607



61.3877, -4.9511, 22.3642



29.7826, -0.1040, 3.1157



28.9993, 35.1520, 18.4846



6.0340, 3.9017, 3.7864

Inverse Universe

The Inverse Universe completely reimagines the original color for something new.



57.1946, -12.4003, -9.7360



74.2874, -18.1898, -17.0311



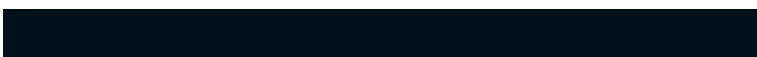
47.6226, 3.1730, -24.3586



30.3837, -2.9840, 0.1196



37.0492, -9.6082, -25.5670



7.2307, -2.6274, -3.3659

Previews

White Background



This preview shows how the HunterLab color 52.3648, 11.0030, 14.4346 looks on a white background.

Color Contrast Check

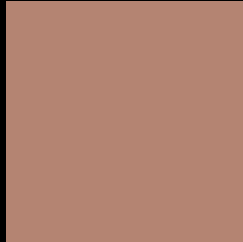
Large Text (above 18pt) WCAG AA ✓ Pass

Any Text WCAG AA × Fail

Large Text (above 18pt) WCAG AAA × Fail

Any Text WCAG AAA × Fail

Black Background



This preview shows how the HunterLab color 52.3648, 11.0030, 14.4346 looks on a black background.

Color Contrast Check

Large Text (above 18pt) WCAG AA ✓ Pass

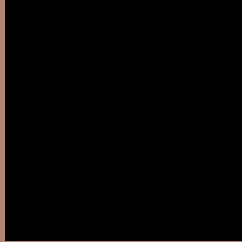
Any Text WCAG AA ✓ Pass

Large Text (above 18pt) WCAG AAA ✓ Pass

Any Text WCAG AAA × Fail

If you want to check with other color combinations, try the [Color Contrast Checker](#).

HunterLab 52.3648, 11.0030, 14.4346 Background



This preview shows how black text looks on a background with the HunterLab color 52.3648, 11.0030, 14.4346.



This preview shows how white text looks on a background with the HunterLab color 52.3648, 11.0030,

Color Blindness Simulation

Color vision deficiency is a very complex topic, and I could not describe the different causes any better than Wikipedia does, so if you want to learn more, you should check out their [article about color blindness](#).

Dichromacy



Original Color

52.3648, 11.0030, 14.4346

Protanopia

52.4939, -3.7441, 12.5687

Deuteranopia

52.5211, 3.2683, 14.7843



Tritanopia

52.4219, 16.3013, 5.3925

Trichromacy



Original Color

52.3648, 11.0030, 14.4346

Protanomaly

52.3746, 1.5360, 13.2481

Deuteranomaly

52.5083, 6.0083, 14.8200

Tritanomaly

52.3202, 14.2059, 8.9525

Monochromacy



Original Color

52.3648, 11.0030, 14.4346

Achromatopsia

52.8104, -2.8178, 2.8693

Achromatomaly

52.5526, 1.4950, 7.3736

CSS Examples

Text

The CSS property to change the color of the text to HunterLab 52.3648, 11.0030, 14.4346 is called "color". The color property can be set on classes, ids or directly on the HTML element.

This example shows how text in the color `rgb(180, 132, 114)` looks like.

```
.text, #text, p{  
    color:rgb(180, 132, 114)  
}
```

If you want to add a text shadow in that color use the text-shadow property, you can generate a text shadow directly with our [CSS Text Shadow Generator](#).

Here you see how black text with a 4 pixel rgb(180, 132, 114) colored shadow looks like.

```
.shadow{ text-shadow: 4px 4px 2px rgb(180, 132, 114) }
```

Border

The CSS property to change the border of an element to HunterLab 52.3648, 11.0030, 14.4346 is called "border". The border property can be set on classes, ids or directly on the HTML element.

This example shows the color as border, it can be applied via the CSS property "border" or "border-color".

```
.border, #border, table{ border:4px solid rgb(180, 132, 114) }
```


If only the border color should be changed use the property `border-color`.

```
.border{ border-color:rgb(180, 132, 114) }
```

If you want to add a box shadow in that color use:

Here you see how a box with a 4 pixel `rgb(180, 132, 114)` colored shadow looks like.

```
.boxshadow{ -moz-box-shadow:4px 4px 4px  
4px rgb(180, 132, 114); -webkit-box-  
shadow:4px 4px 4px 4px rgb(180, 132, 114);  
box-shadow:4px 4px 4px 4px rgb(180, 132,  
114) }
```

Background

The CSS property to change the background color of an element to HunterLab 52.3648, 11.0030, 14.4346 is called "background". The background property can be set on classes, ids or directly on the HTML element.

```
.background, #background, body{  
background: rgb(180, 132, 114) }
```

If only the background color should be changed can be used:

```
.background{ background-color: rgb(180,  
132, 114) }
```

This example shows the color as background, it is applied via the CSS property "background".

To optimize and compress your CSS code, you can use our [online CSS compressor and optimizer](#) based on csstidy. If you want to create a linear or radial gradient as background or border, check our [CSS Gradient Generator](#).

Hey! You found this booklet interesting? Support Converting Colors with the new Membership Option!

The pro membership hides all ads, plus gives you double the colors in the color bucket, and more awesome pro features!

[Learn more, Memberships starting at \\$2.50/m!](#)

**Follow me
on Twitter!**

@ConvertingColor