

Converting Colors

HunterLab(52.4289, 3.7472,
14.0224)

Have a look what the booklet for
HunterLab(52.4289, 3.7472,
14.0224) contains.

HunterLab(52.5645, 3.5006, 14.1563)	3
<i>Conversions</i>	4
<i>Details</i>	6
<i>Harmonies</i>	12
<i>Previews</i>	24
<i>Color Blindness Simulation</i>	28
<i>CSS Examples</i>	31

Color

**HunterLab(52.5645, 3.5006,
14.1563)**

Conversions

Conversions Part 1

Format	Color
Hex	A78A73
RGB	167, 138, 115
RGB Percent	65%, 54%, 45%
CMY	0.3451, 0.4588, 0.5490
CMYK	0.00, 0.17, 0.31, 0.35
HSL	27°, 23%, 55%
HSV	27°, 31%, 65%
XYZ	28.1193, 27.6303, 20.0708
YIQ	144.0490, 24.6670, -1.0050

Conversions

Conversions Part 2

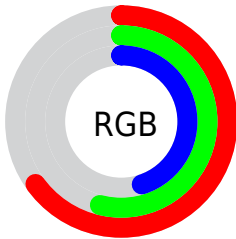
Format	Color
R_{YB}	167, 156, 115
Decimal	10979955
CIE _{Lab}	59.55, 7.50, 16.44
CIE _{LCh}	60, 18.072, 65.474
Yxy	27.6315, 0.3709, 0.3644
Android (android.graphics.Color)	4289170035 (0xFFA78A73)
YUV	144.0490, -14.3212, 20.1280
Hunter-Lab	52.5645, 3.5006, 14.1563

Details

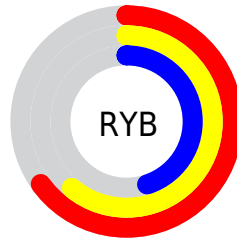
The HunterLab color $52.5645, 3.5006, 14.1563$ is a dark color, and the websafe version is hex $CC9999$. A complement of this color would be $51.3621, -6.4121, -10.6655$, and the grayscale version is $52.8797, -2.8215, 2.8731$.

A 20% lighter version of the original color is $74.6590, 3.3248, 17.0294$, and $33.1091, 3.7475, 10.9580$ is the 20% darker color. If you saturate the color by 10%, you get $49.7218, 6.2006, 16.8788$, and if you desaturate by 10%, it is $55.5332, 1.0581, 11.0455$.

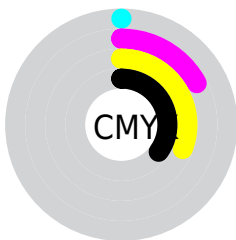
Distribution



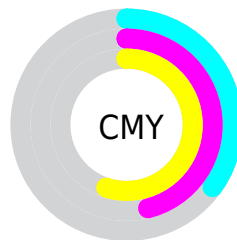
- Red (65%)
- Green (54%)
- Blue (45%)



- Red (65%)
- Yellow (61%)
- Blue (45%)



- Cyan (0%)
- Magenta (17%)
- Yellow (31%)
- Black (35%)



- Cyan (35%)
- Magenta (46%)
- Yellow (55%)

Brightness & Saturation Gradients

These gradients show how the HunterLab color 52.5645, 3.5006, 14.1563 changes by changing the brightness by 10 percent. The first figure shows a shift by +10% for each color and the second figure -10%.

Similar to the brightness gradients but the following saturation gradients show a change of the HunterLab color 52.5645, 3.5006, 14.1563 by changing the saturation by 10% instead.

■ 52.5645, 3.5006,
14.1563

■ 52.5645, 3.5006,
14.1563

170.4999, 0.1129,
27.2266

■ 42.4831, 3.6256,
12.6246

■ 74.7634, 3.0649,
17.1257

■ 33.1429, 3.6820,
11.0391

■ 86.8015, 2.7694,
18.5816

■ 24.6098, 3.6564,
9.3740

■ 99.4243, 2.4271,
20.0273

■ 16.9689, 3.5319,
7.5853

112.6058, 2.0413,
21.4672

■ 10.3398, 3.2818,
7.2252

126.3233, 1.6147,
22.9047

0.0000, INF, NaN

0.0000, NaN, NaN

140.5565, 1.1499,

24.3425

0.0000, NaN, NaN

155.2875, 0.6486,
25.7826

0.0000, NaN, NaN

■ 52.5645, 3.5006,
14.1563

■ 52.5645, 3.5006,
14.1563

■ 49.7218, 6.2006,
16.8788

■ 55.5332, 1.0581,
11.0455

■ 47.0137, 9.1763,
19.1632

■ 58.6131, -1.1375,
7.5879

■ 44.4549, 12.4311,
20.9606

■ 61.7956, -3.1065,
3.8233

■ 42.0600, 15.9590,
22.2240

■ 65.0719, -4.8676,
-0.2139

■ 39.8437, 19.7367,
22.9160

■ 68.4343, -6.4388,
-4.4942

■ 37.8202, 23.7169,
23.0229

■ 71.8760, -7.8375,
-8.9919

■ 36.1893, 27.3112,
22.7778

■ 75.3910, -9.0794,
-13.6850

■ 78.9741, -10.1791,
-18.5547

■ 82.2071, -13.4543,
-17.8136

Harmonies

Analogous

The Analogous color harmony consists of three colors that are next to each other on the color wheel.



52.5657, 9.8383, 10.4155



52.5645, 3.5006, 14.1563



52.5657, -4.2163, 15.0683

Triad

The Triadic color harmony groups three colors that are evenly spaced from another and form a triangle on the color wheel.



52.5657, 3.4987, 14.1570



52.5657, -16.7856, 1.4962



52.5657, 6.0891, -9.9893

Complementary

The Complementary color scheme is a pair of colors which are on the opposite of each other on the color wheel.



52.5645, 3.5006, 14.1563



51.3621, -6.4121, -10.6655

Split Complementary

Split-complementary colors differ from the complementary color scheme. The scheme consists of three colors, the original color and two neighbors of the complement color.



52.5657, -1.3838, -13.2290



52.5645, 3.5006, 14.1563



52.5657, -14.3606, -6.0127

Square

The Square scheme is like the rectangle color scheme, but the four colors are evenly spaced on the color wheel.



52.5657, 3.4987, 14.1570



52.5657, -15.6446, 8.3930



52.5657, -8.8299, -11.6780



52.5657, 11.3933, -3.3457

Rectangle

The Rectangle color scheme consists of four colors that form a rectangle on the color wheel.



52.5645, 3.5006, 14.1563



52.5657, -9.0421, 14.0816



52.5657, -8.8299, -11.6780



52.5657, 3.7317, -11.5530

Sweetspot

The Sweet Spot groups the original color and five complimentary colors.



52.5657, 3.4987, 14.1570



79.2697, -2.0657, 9.1910



47.4397, 19.0887, -3.6449



37.2184, -0.7943, 4.6739



92.0917, -4.9138, 5.0035



39.3538, -2.0998, 2.1382

Same Dimension

The Same Dimension uses a secret algorithm to generate beautiful new colors.



52.5657, 3.4987, 14.1570



67.8404, 7.0036, 21.3883



59.8645, -8.6822, 20.6718



28.4044, -0.7282, 3.3183



31.8063, 23.5232, 20.0107



5.9064, 1.5906, 3.6674

Inverse Universe

The Inverse Universe completely reimagines the original color for something new.



51.3621, -6.4121, -10.6655



65.9061, -8.8560, -18.4465



44.1614, 5.8982, -21.7682



28.2280, -2.1901, -0.3262



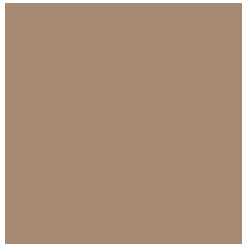
28.7073, 1.9335, -40.0555



5.4772, -1.3111, -4.0158

Previews

White Background



This preview shows how the HunterLab color 52.5645, 3.5006, 14.1563 looks on a white background.

Color Contrast Check

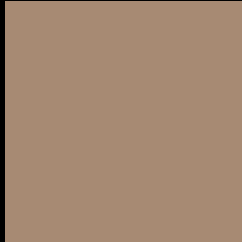
Large Text (above 18pt) WCAG AA ✓ Pass

Any Text WCAG AA × Fail

Large Text (above 18pt) WCAG AAA × Fail

Any Text WCAG AAA × Fail

Black Background



This preview shows how the HunterLab color 52.5645, 3.5006, 14.1563 looks on a black background.

Color Contrast Check

Large Text (above 18pt) WCAG AA ✓ Pass

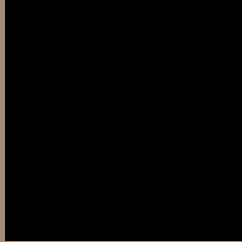
Any Text WCAG AA ✓ Pass

Large Text (above 18pt) WCAG AAA ✓ Pass

Any Text WCAG AAA × Fail

If you want to check with other color combinations, try the [Color Contrast Checker](#).

HunterLab 52.5645, 3.5006, 14.1563 Background



This preview shows how black text looks on a background with the HunterLab color 52.5645, 3.5006, 14.1563.



This preview shows how white text looks on a background with the HunterLab color 52.5645, 3.5006,

Color Blindness Simulation

Color vision deficiency is a very complex topic, and I could not describe the different causes any better than Wikipedia does, so if you want to learn more, you should check out their [article about color blindness](#).

Dichromacy



Original Color

52.5645, 3.5006, 14.1563

Protanopia

52.5627, -3.5495, 12.9935

Deuteranopia

52.5645, 3.5006, 14.1563



Tritanopia

52.5451, 10.4230, 2.7880

Trichromacy



Original Color

52.5645, 3.5006, 14.1563

Protanomaly

52.4425, -1.0979, 13.2686

Deuteranomaly

52.5645, 3.5006, 14.1563

Tritanomaly

52.3989, 7.9773, 7.3190

Monochromacy



Original Color

52.5645, 3.5006, 14.1563

Achromatopsia

52.8104, -2.8178, 2.8693

Achromatomaly

52.6449, -1.0711, 7.4295

CSS Examples

Text

The CSS property to change the color of the text to HunterLab 52.5645, 3.5006, 14.1563 is called "color". The color property can be set on classes, ids or directly on the HTML element.

This example shows how text in the color `rgb(167, 138, 115)` looks like.

```
.text, #text, p{  
    color:rgb(167, 138, 115)  
}
```

If you want to add a text shadow in that color use the text-shadow property, you can generate a text shadow directly with our [CSS Text Shadow Generator](#).

Here you see how black text with a 4 pixel rgb(167, 138, 115) colored shadow looks like.

```
.shadow{ text-shadow: 4px 4px 2px rgb(167, 138, 115) }
```

Border

The CSS property to change the border of an element to HunterLab 52.5645, 3.5006, 14.1563 is called "border". The border property can be set on classes, ids or directly on the HTML element.

This example shows the color as border, it can be applied via the CSS property "border" or "border-color".

```
.border, #border, table{ border:4px solid rgb(167, 138, 115) }
```


If only the border color should be changed use the property `border-color`.

```
.border{ border-color:rgb(167, 138, 115) }
```

If you want to add a box shadow in that color use:

Here you see how a box with a 4 pixel `rgb(167, 138, 115)` colored shadow looks like.

```
.boxshadow{ -moz-box-shadow:4px 4px 4px  
4px rgb(167, 138, 115); -webkit-box-  
shadow:4px 4px 4px 4px rgb(167, 138, 115);  
box-shadow:4px 4px 4px 4px rgb(167, 138,  
115) }
```

Background

The CSS property to change the background color of an element to HunterLab 52.5645, 3.5006, 14.1563 is called "background". The background property can be set on classes, ids or directly on the HTML element.

```
.background, #background, body{  
background: rgb(167, 138, 115) }
```

If only the background color should be changed can be used:

```
.background{ background-color: rgb(167,  
138, 115) }
```

This example shows the color as background, it is applied via the CSS property "background".

To optimize and compress your CSS code, you can use our [online CSS compressor and optimizer](#) based on csstidy. If you want to create a linear or radial gradient as background or border, check our [CSS Gradient Generator](#).

Hey! You found this booklet interesting? Support Converting Colors with the new Membership Option!

The pro membership hides all ads, plus gives you double the colors in the color bucket, and more awesome pro features!

[Learn more, Memberships starting at \\$2.50/m!](#)

**Follow me
on Twitter!**

@ConvertingColor