

Converting Colors

HunterLab(52.4565, 16.9170,
8.4189)

Have a look what the booklet for
HunterLab(52.4565, 16.9170,
8.4189) contains.

HunterLab(52.3367, 16.9482, 8.2208)	3
<i>Conversions</i>	4
<i>Details</i>	6
<i>Harmonies</i>	12
<i>Previews</i>	24
<i>Color Blindness Simulation</i>	28
<i>CSS Examples</i>	31

Color

**HunterLab(52.3367, 16.9482,
8.2208)**

Conversions

Conversions Part 1

Format	Color
Hex	B98083
RGB	185, 128, 131
RGB Percent	73%, 50%, 51%
CMY	0.2745, 0.4980, 0.4863
CMYK	0.00, 0.31, 0.29, 0.27
HSL	357°, 29%, 61%
HSV	357°, 31%, 73%
XYZ	31.8235, 27.3913, 25.0825
YIQ	145.3850, 33.0090, 13.0170

Conversions

Conversions Part 2

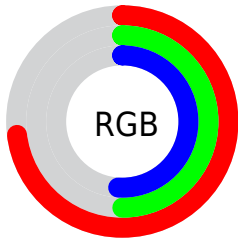
Format	Color
RYB	185, 128, 131
Decimal	12157059
CIELab	59.34, 22.47, 7.29
CIELCh	59, 23.625, 17.963
Yxy	27.3926, 0.3775, 0.3249
Android (android.graphics.Color)	4290347139 (0xFFB98083)
YUV	145.3850, -7.0918, 34.7424
Hunter-Lab	52.3367, 16.9482, 8.2208

Details

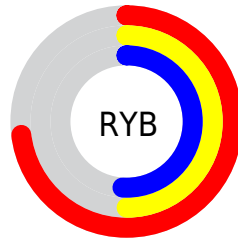
The HunterLab color **52.3367, 16.9482, 8.2208** is a light color, and the websafe version is hex **CC9999**. A complement of this color would be **65.3186, -19.4924, -0.2656**, and the grayscale version is **53.3856, -2.8485, 2.9005**.

A 20% lighter version of the original color is **74.4216, 17.9740, 10.0456**, and **32.8691, 15.5389, 6.1266** is the 20% darker color. If you saturate the color by 10%, you get **47.5000, 24.1163, 10.0161**, and if you desaturate by 10%, it is **57.6046, 9.9761, 6.6074**.

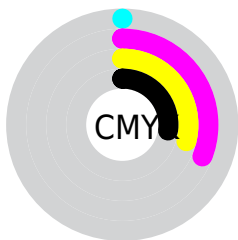
Distribution



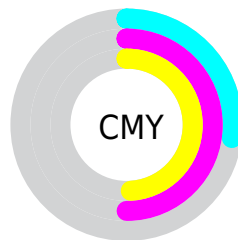
- Red (73%)
- Green (50%)
- Blue (51%)



- Red (73%)
- Yellow (50%)
- Blue (51%)



- Cyan (0%)
- Magenta (31%)
- Yellow (29%)
- Black (27%)



- Cyan (27%)
- Magenta (50%)
- Yellow (49%)

Brightness & Saturation Gradients

These gradients show how the HunterLab color 52.3367, 16.9482, 8.2208 changes by changing the brightness by 10 percent. The first figure shows a shift by +10% for each color and the second figure -10%.

Similar to the brightness gradients but the following saturation gradients show a change of the HunterLab color 52.3367, 16.9482, 8.2208 by changing the saturation by 10% instead.

■ 52.3367, 16.9482,
8.2208

■ 52.3367, 16.9482,
8.2208

170.1626, 19.0936,
17.4721

■ 42.2709, 16.3177,
7.2608

■ 74.5072, 17.9147,
10.1724

■ 32.9476, 15.5762,
6.3037

■ 86.5323, 18.2750,
11.1673

■ 24.4330, 14.7045,
5.3423

■ 99.1426, 18.5627,
12.1771

■ 16.8127, 13.6829,
4.3621

112.3121, 18.7838,
13.2027

■ 10.2075, 12.4973,
3.5674

126.0181, 18.9435,
14.2448

0.0000, INF, NaN

0.0000, NaN, NaN

140.2403, 19.0459,

15.3035

0.0000, NaN, NaN

154.9605, 19.0949,
16.3793

0.0000, NaN, NaN

■ 52.3367, 16.9482,
8.2208

■ 52.3367, 16.9482,
8.2208

■ 47.5000, 24.1163,
10.0161

■ 57.6046, 9.9761,
6.6074

■ 43.1750, 31.3492,
11.9741

■ 63.2309, 3.2581,
5.1665

■ 39.4597, 38.3721,
14.0381

■ 69.1615, -3.2047,
3.8820

■ 36.4538, 44.7458,
16.0905

■ 75.3524, -9.4319,
2.7336

■ 34.2394, 49.9060,
17.9534

■ 81.7689, -15.4520,
1.7018

■ 32.8469, 53.3383,
19.4271

■ 88.3832, -21.2953,
0.7689

■ 32.1491, 55.1226,
20.2601

■ 94.3241, -25.7708,
-1.1064

■ 94.3686, -25.5176,
-1.7375

Harmonies

Analogous

The Analogous color harmony consists of three colors that are next to each other on the color wheel.



52.3379, 17.5399, -1.1436



52.3367, 16.9482, 8.2208



52.3379, 10.8246, 14.7753

Triad

The Triadic color harmony groups three colors that are evenly spaced from another and form a triangle on the color wheel.



52.3379, 16.9460, 8.2217



52.3379, -16.4259, 13.7516



52.3379, -6.7762, -18.5797

Complementary

The Complementary color scheme is a pair of colors which are on the opposite of each other on the color wheel.



52.3367, 16.9482, 8.2208



65.3186, -19.4924, -0.2656

Split Complementary

Split-complementary colors differ from the complementary color scheme. The scheme consists of three colors, the original color and two neighbors of the complement color.



52.3379, -15.1510, -12.7770



52.3367, 16.9482, 8.2208



52.3379, -20.4333, 6.5497

Square

The Square scheme is like the rectangle color scheme, but the four colors are evenly spaced on the color wheel.



52.3379, 16.9460, 8.2217



52.3379, -8.6394, 17.5273



52.3379, -19.9850, -3.1618



52.3379, 3.3167, -17.8982

Rectangle

The Rectangle color scheme consists of four colors that form a rectangle on the color wheel.



52.3367, 16.9482, 8.2208



52.3379, 4.6767, 17.2190



52.3379, -19.9850, -3.1618



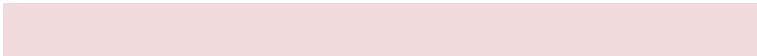
52.3379, -9.8705, -17.2837

Sweetspot

The Sweet Spot groups the original color and five complimentary colors.



52.3379, 16.9460, 8.2217



85.9126, 2.9002, 6.6149



53.6567, 24.4647, -17.2267



39.3668, 1.9368, 3.1923



96.5975, -5.1542, 5.2483



43.2801, -2.3093, 2.3515

Same Dimension

The Same Dimension uses a secret algorithm to generate beautiful new colors.



52.3379, 16.9460, 8.2217



65.5735, 29.1792, 12.6092



58.7862, 4.1485, 15.6977



30.0328, 1.0724, 2.3279



26.5349, 45.5094, 16.6227



5.0081, 8.6411, 2.7360

Inverse Universe

The Inverse Universe completely reimagines the original color for something new.



52.3379, 16.9460, 8.2217



65.5735, 29.1792, 12.6092



57.7398, -7.4261, -11.6824



30.0328, 1.0724, 2.3279



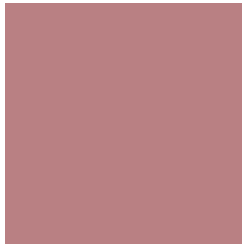
26.5349, 45.5094, 16.6227



5.0081, 8.6411, 2.7360

Previews

White Background



This preview shows how the HunterLab color 52.3367, 16.9482, 8.2208 looks on a white background.

Color Contrast Check

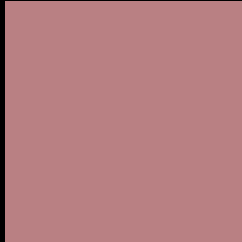
Large Text (above 18pt) WCAG AA ✓ Pass

Any Text WCAG AA ✗ Fail

Large Text (above 18pt) WCAG AAA ✗ Fail

Any Text WCAG AAA ✗ Fail

Black Background



This preview shows how the HunterLab color 52.3367, 16.9482, 8.2208 looks on a black background.

Color Contrast Check

Large Text (above 18pt) WCAG AA ✓ Pass

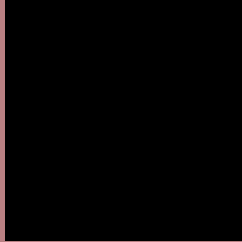
Any Text WCAG AA ✓ Pass

Large Text (above 18pt) WCAG AAA ✓ Pass

Any Text WCAG AAA × Fail

If you want to check with other color combinations, try the [Color Contrast Checker](#).

HunterLab 52.3367, 16.9482, 8.2208 Background



This preview shows how black text looks on a background with the HunterLab color 52.3367, 16.9482, 8.2208.



This preview shows how white text looks on a background with the HunterLab color 52.3367, 16.9482,

Color Blindness Simulation

Color vision deficiency is a very complex topic, and I could not describe the different causes any better than Wikipedia does, so if you want to learn more, you should check out their [article about color blindness](#).

Dichromacy



Original Color

52.3367, 16.9482, 8.2208

Protanopia

52.6422, -2.2155, 4.8884

Deuteranopia

52.3864, 3.5641, 8.8368



Tritanopia

52.3679, 18.6386, 5.7999

Trichromacy



Original Color

52.3367, 16.9482, 8.2208

Protanomaly

52.4706, 4.2136, 6.0861

Deuteranomaly

52.1612, 8.4097, 8.2833

Tritanomaly

52.3136, 18.3631, 6.5784

Monochromacy



Original Color

52.3367, 16.9482, 8.2208

Achromatopsia

53.2117, -2.8392, 2.8911

Achromatomaly

52.7563, 3.9820, 4.6942

CSS Examples

Text

The CSS property to change the color of the text to HunterLab 52.3367, 16.9482, 8.2208 is called "color". The color property can be set on classes, ids or directly on the HTML element.

This example shows how text in the color `rgb(185, 128, 131)` looks like.

```
.text, #text, p{  
    color:rgb(185, 128, 131)  
}
```

If you want to add a text shadow in that color use the text-shadow property, you can generate a text shadow directly with our [CSS Text Shadow Generator](#).

Here you see how black text with a 4 pixel rgb(185, 128, 131) colored shadow looks like.

```
.shadow{ text-shadow: 4px 4px 2px rgb(185, 128, 131) }
```

Border

The CSS property to change the border of an element to HunterLab 52.3367, 16.9482, 8.2208 is called "border". The border property can be set on classes, ids or directly on the HTML element.

This example shows the color as border, it can be applied via the CSS property "border" or "border-color".

```
.border, #border, table{ border:4px solid rgb(185, 128, 131) }
```


If only the border color should be changed use the property `border-color`.

```
.border{ border-color:rgb(185, 128, 131) }
```

If you want to add a box shadow in that color use:

Here you see how a box with a 4 pixel `rgb(185, 128, 131)` colored shadow looks like.

```
.boxshadow{ -moz-box-shadow:4px 4px 4px  
4px rgb(185, 128, 131); -webkit-box-  
shadow:4px 4px 4px 4px rgb(185, 128, 131);  
box-shadow:4px 4px 4px 4px rgb(185, 128,  
131) }
```

Background

The CSS property to change the background color of an element to HunterLab 52.3367, 16.9482, 8.2208 is called "background". The background property can be set on classes, ids or directly on the HTML element.

```
.background, #background, body{  
background: rgb(185, 128, 131) }
```

If only the background color should be changed can be used:

```
.background{ background-color: rgb(185,  
128, 131) }
```

This example shows the color as background, it is applied via the CSS property "background".

To optimize and compress your CSS code, you can use our [online CSS compressor and optimizer](#) based on csstidy. If you want to create a linear or radial gradient as background or border, check our [CSS Gradient Generator](#).

Hey! You found this booklet interesting? Support Converting Colors with the new Membership Option!

The pro membership hides all ads, plus gives you double the colors in the color bucket, and more awesome pro features!

[Learn more, Memberships starting at \\$2.50/m!](#)

**Follow me
on Twitter!**

@ConvertingColor