

Converting Colors

HunterLab(52.4860, 70.8645,
7.9696)

Have a look what the booklet for
HunterLab(52.4860, 70.8645,
7.9696) contains.

HunterLab(52.4287, 70.9781, 8.0430)	3
<i>Conversions</i>	4
<i>Details</i>	6
<i>Harmonies</i>	12
<i>Previews</i>	24
<i>Color Blindness Simulation</i>	28
<i>CSS Examples</i>	31

Color

**HunterLab(52.4287, 70.9781,
8.0430)**

Conversions

Conversions Part 1

Format	Color
Hex	FF4786
RGB	255, 71, 134
RGB Percent	100%, 28%, 53%
CMY	0.0000, 0.7215, 0.4745
CMYK	0.00, 0.72, 0.47, 0.00
HSL	339°, 100%, 64%
HSV	339°, 72%, 100%
XYZ	47.7963, 27.4877, 25.3408
YIQ	133.1980, 89.4410, 58.6010

Conversions

Conversions Part 2

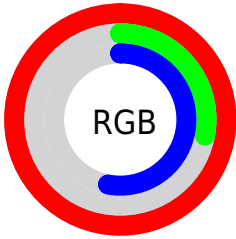
Format	Color
RYB	255, 71, 134
Decimal	16729990
CIELab	59.42, 72.50, 7.02
CIELCh	59, 72.844, 5.530
Yxy	27.4892, 0.4750, 0.2732
Android (android.graphics.Color)	4294920070 (0xFFFF4786)
YUV	133.1980, 0.3954, 106.8204
Hunter-Lab	52.4287, 70.9781, 8.0430

Details

The HunterLab color **52.4287, 70.9781, 8.0430** is a light color, and the websafe version is hex **FF6699**. The color can be described as light washed rose. A complement of this color would be **87.5592, -55.6295, 19.2066**, and the grayscale version is **48.4847, -2.5870, 2.6343**.

A 20% lighter version of the original color is **64.3043, 49.7472, -2.8528**, and **34.4418, 60.8868, 7.4940** is the 20% darker color. If you saturate the color by 10%, you get **49.4629, 77.3584, 11.5746**, and if you desaturate by 10%, it is **56.5212, 62.2682, 5.3081**.

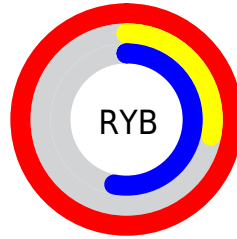
Distribution



Red (100%)

Green (28%)

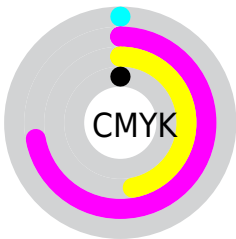
Blue (53%)



Red (100%)

Yellow (28%)

Blue (53%)

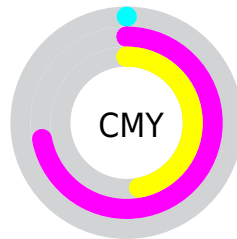


Cyan (0%)

Magenta (72%)

Yellow (47%)

Black (0%)



Cyan (0%)

Magenta (72%)

Yellow (47%)

Brightness & Saturation Gradients

These gradients show how the HunterLab color 52.4287, 70.9781, 8.0430 changes by changing the brightness by 10 percent. The first figure shows a shift by +10% for each color and the second figure -10%.

Similar to the brightness gradients but the following saturation gradients show a change of the HunterLab color 52.4287, 70.9781, 8.0430 by changing the saturation by 10% instead.

■ 52.4287, 70.9781,
8.0430

■ 52.4287, 70.9781,
8.0430

170.2992, 88.3085,
17.1888

■ 42.3568, 68.6388,
7.0992

■ 74.6110, 75.4499,
9.9669

■ 33.0267, 66.3029,
6.1595

■ 86.6413, 77.5576,
10.9490

■ 24.5046, 64.0913,
5.2175

■ 99.2567, 79.5721,
11.9468

■ 16.8759, 62.3178,
4.2597

■ 112.4311, 81.4937,
12.9609

■ 10.2610, 61.9079,
3.4542

■ 126.1417, 83.3249,
13.9919

0.0000, INF, NaN

0.0000, INF, NaN

140.3684, 85.0687,

15.0401

0.0000, NaN, NaN

155.0930, 86.7287,
16.1057

0.0000, NaN, NaN

■ 52.4287, 70.9781,
8.0430

■ 52.4287, 70.9781,
8.0430

■ 49.4629, 77.3584,
11.5746

■ 56.5212, 62.2682,
5.3081

■ 47.6337, 80.8228,
15.6139

■ 61.6377, 52.0660,
3.4731

■ 46.8540, 81.7179,
18.8105

■ 67.6467, 41.0958,
2.5078

■ 74.4128, 29.8672,
2.3078

■ 81.8149, 18.6807,
2.7471

89.7519, 7.6865,
3.7076

98.1418, -3.0577,
5.0890

100.0000, -5.3359,
5.4331

Harmonies

Analogous

The Analogous color harmony consists of three colors that are next to each other on the color wheel.



52.4302, 63.4743, -26.5961



52.4287, 70.9781, 8.0430



52.4302, 55.2718, 26.3155

Triad

The Triadic color harmony groups three colors that are evenly spaced from another and form a triangle on the color wheel.



52.4302, 70.9734, 8.0443



52.4302, -33.2193, 31.2479



52.4302, -25.3401, -79.7958

Complementary

The Complementary color scheme is a pair of colors which are on the opposite of each other on the color wheel.



52.4287, 70.9781, 8.0430



87.5592, -55.6295, 19.2066

Split Complementary

Split-complementary colors differ from the complementary color scheme. The scheme consists of three colors, the original color and two neighbors of the complement color.



52.4302, -43.1268, -42.1270



52.4287, 70.9781, 8.0430



52.4302, -46.8780, 21.3705

Square

The Square scheme is like the rectangle color scheme, but the four colors are evenly spaced on the color wheel.



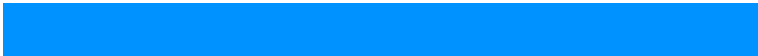
52.4302, 70.9734, 8.0443



52.4302, -8.4385, 33.7694



52.4302, -50.0285, -2.9282



52.4302, 3.0866, -91.1918

Rectangle

The Rectangle color scheme consists of four colors that form a rectangle on the color wheel.



52.4287, 70.9781, 8.0430



52.4302, 35.5139, 31.4246



52.4302, -50.0285, -2.9282



52.4302, -32.5315, -69.0265

Sweetspot

The Sweet Spot groups the original color and five complimentary colors.



52.4302, 70.9734, 8.0443



81.9319, 18.5120, 2.7581



47.7003, 72.5349, -86.9316



36.9495, 9.9607, 1.1939

0.0000, NaN, NaN



46.2646, -2.4686, 2.5136

Same Dimension

The Same Dimension uses a secret algorithm to generate beautiful new colors.



52.4302, 70.9734, 8.0443



48.4379, 79.4198, 13.4935



55.2857, 54.3608, 28.6232



42.5320, 2.2285, 1.8672



33.9057, 59.2065, 13.0574



10.6718, 18.8123, 2.7372

Inverse Universe

The Inverse Universe completely reimagines the original color for something new.



52.4302, 70.9734, 8.0443



48.4379, 79.4198, 13.4935



79.8236, -31.8439, -21.6414



42.5320, 2.2285, 1.8672



33.9057, 59.2065, 13.0574



10.6718, 18.8123, 2.7372

Previews

White Background



This preview shows how the HunterLab color 52.4287, 70.9781, 8.0430 looks on a white background.

Color Contrast Check

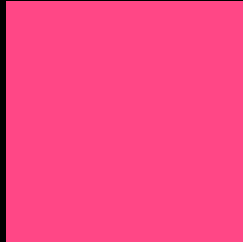
Large Text (above 18pt) WCAG AA ✓ Pass

Any Text WCAG AA × Fail

Large Text (above 18pt) WCAG AAA × Fail

Any Text WCAG AAA × Fail

Black Background



This preview shows how the HunterLab color 52.4287, 70.9781, 8.0430 looks on a black background.

Color Contrast Check

Large Text (above 18pt) WCAG AA ✓ Pass

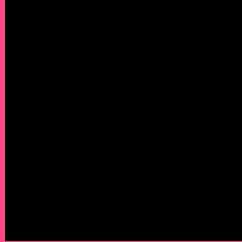
Any Text WCAG AA ✓ Pass

Large Text (above 18pt) WCAG AAA ✓ Pass

Any Text WCAG AAA × Fail

If you want to check with other color combinations, try the [Color Contrast Checker](#).

HunterLab 52.4287, 70.9781, 8.0430 Background



This preview shows how black text looks on a background with the HunterLab color 52.4287, 70.9781, 8.0430.



This preview shows how white text looks on a background with the HunterLab color 52.4287, 70.9781, 8.0430.

Color Blindness Simulation

Color vision deficiency is a very complex topic, and I could not describe the different causes any better than Wikipedia does, so if you want to learn more, you should check out their [article about color blindness](#).

Dichromacy



Original Color

52.4287, 70.9781, 8.0430

Protanopia

52.5702, 1.2630, -12.7475

Deuteranopia

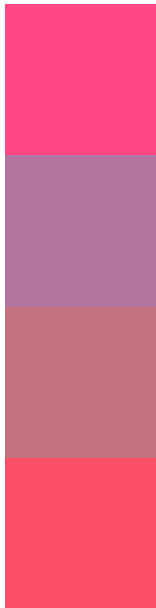
52.4882, 3.7070, 10.4916



Tritanopia

52.3623, 61.3675, 23.1300

Trichromacy



Original Color

52.4287, 70.9781, 8.0430

Protanomaly

49.5759, 25.1967, -8.2385

Deuteranomaly

50.4613, 28.2118, 7.5928

Tritanomaly

52.2790, 64.6549, 18.4929

Monochromacy



Original Color

52.4287, 70.9781, 8.0430

Achromatopsia

48.4304, -2.5841, 2.6313

Achromatomaly

47.1088, 23.4308, 1.5103

CSS Examples

Text

The CSS property to change the color of the text to HunterLab 52.4287, 70.9781, 8.0430 is called "color". The color property can be set on classes, ids or directly on the HTML element.

This example shows how text in the color `rgb(255, 71, 134)` looks like.

```
.text, #text, p{  
    color:rgb(255, 71, 134)  
}
```

If you want to add a text shadow in that color use the text-shadow property, you can generate a text shadow directly with our [CSS Text Shadow Generator](#).

Here you see how black text with a 4 pixel rgb(255, 71, 134) colored shadow looks like.

```
.shadow{ text-shadow: 4px 4px 2px rgb(255, 71, 134) }
```

Border

The CSS property to change the border of an element to HunterLab 52.4287, 70.9781, 8.0430 is called "border". The border property can be set on classes, ids or directly on the HTML element.

This example shows the color as border, it can be applied via the CSS property "border" or "border-color".

```
.border, #border, table{ border:4px solid rgb(255, 71, 134) }
```


If only the border color should be changed use the property border-color.

```
.border{ border-color:rgb(255, 71, 134) }
```

If you want to add a box shadow in that color use:

Here you see how a box with a 4 pixel rgb(255, 71, 134) colored shadow looks like.

```
.boxshadow{ -moz-box-shadow:4px 4px 4px  
4px rgb(255, 71, 134); -webkit-box-  
shadow:4px 4px 4px 4px rgb(255, 71, 134);  
box-shadow:4px 4px 4px 4px rgb(255, 71,  
134) }
```

Background

The CSS property to change the background color of an element to HunterLab 52.4287, 70.9781, 8.0430 is called "background". The background property can be set on classes, ids or directly on the HTML element.

```
.background, #background, body{  
background: rgb(255, 71, 134) }
```

If only the background color should be changed can be used:

```
.background{ background-color: rgb(255, 71,  
134) }
```

This example shows the color as background, it is applied via the CSS property "background".

To optimize and compress your CSS code, you can use our [online CSS compressor and optimizer](#) based on csstidy. If you want to create a linear or radial gradient as background or border, check our [CSS Gradient Generator](#).

Hey! You found this booklet interesting? Support Converting Colors with the new Membership Option!

The pro membership hides all ads, plus gives you double the colors in the color bucket, and more awesome pro features!

[Learn more, Memberships starting at \\$2.50/m!](#)

**Follow me
on Twitter!**

@ConvertingColor