

Converting Colors

HunterLab(52.5055, 3.3911,
13.4088)

Have a look what the booklet for
HunterLab(52.5055, 3.3911,
13.4088) contains.

HunterLab(52.5055, 3.3911, 13.4088)	3
<i>Conversions</i>	4
<i>Details</i>	6
<i>Harmonies</i>	12
<i>Previews</i>	24
<i>Color Blindness Simulation</i>	28
<i>CSS Examples</i>	31

Color

**HunterLab(52.5055, 3.3911,
13.4088)**

Conversions

Conversions Part 1

Format	Color
Hex	A68A75
RGB	166, 138, 117
RGB Percent	65%, 54%, 46%
CMY	0.3490, 0.4588, 0.5412
CMYK	0.00, 0.17, 0.30, 0.35
HSL	26°, 22%, 55%
HSV	26°, 30%, 65%
XYZ	28.0252, 27.5683, 20.6737
YIQ	143.9780, 23.4290, -0.5950

Conversions

Conversions Part 2

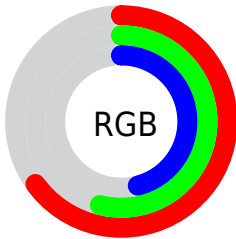
Format	Color
R_{YB}	166, 154, 117
Decimal	10914421
CIE _{Lab}	59.50, 7.37, 15.22
CIE _{LCh}	59, 16.908, 64.145
Yxy	27.5695, 0.3675, 0.3615
Android (android.graphics.Color)	4289104501 (0xFFA68A75)
YUV	143.9780, -13.3002, 19.3133
Hunter-Lab	52.5055, 3.3911, 13.4088

Details

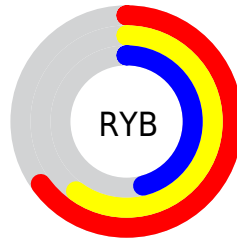
The HunterLab color $52.5055, 3.3911, 13.4088$ is a dark color, and the websafe version is hex $CC9999$. A complement of this color would be $51.7542, -6.6072, -9.5544$, and the grayscale version is $52.8476, -2.8198, 2.8713$.

A 20% lighter version of the original color is $74.6028, 3.2348, 16.1950$, and $33.0452, 3.6096, 10.3237$ is the 20% darker color. If you saturate the color by 10%, you get $49.6076, 6.1390, 16.1437$, and if you desaturate by 10%, it is $55.5310, 0.8963, 10.3081$.

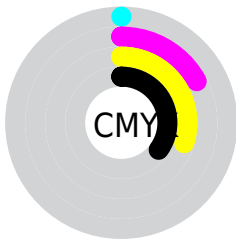
Distribution



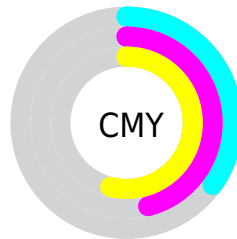
- Red (65%)
- Green (54%)
- Blue (46%)



- Red (65%)
- Yellow (60%)
- Blue (46%)



- Cyan (0%)
- Magenta (17%)
- Yellow (30%)
- Black (35%)



- Cyan (35%)
- Magenta (46%)
- Yellow (54%)

Brightness & Saturation Gradients

These gradients show how the HunterLab color 52.5055, 3.3911, 13.4088 changes by changing the brightness by 10 percent. The first figure shows a shift by +10% for each color and the second figure -10%.

Similar to the brightness gradients but the following saturation gradients show a change of the HunterLab color 52.5055, 3.3911, 13.4088 by changing the saturation by 10% instead.

■ 52.5055, 3.3911,
13.4088

■ 52.5055, 3.3911,
13.4088

170.4125, -0.0434,
25.9535

■ 42.4281, 3.5226,
11.9563

■ 74.6970, 2.9435,
16.2374

■ 33.0923, 3.5860,
10.4580

■ 86.7318, 2.6424,
17.6298

■ 24.5640, 3.5678,
8.8906

■ 99.3514, 2.2947,
19.0155

■ 16.9284, 3.4514,
7.2138

112.5298, 1.9038,
20.3984

■ 10.3055, 3.2100,
6.7473

126.2442, 1.4723,
21.7816

0.0000, INF, NaN

0.0000, NaN, NaN

140.4746, 1.0026,

23.1673

0.0000, NaN, NaN

155.2028, 0.4968,
24.5575

0.0000, NaN, NaN

■ 52.5055, 3.3911,
13.4088

■ 52.5055, 3.3911,
13.4088

■ 49.6076, 6.1390,
16.1437

■ 55.5310, 0.8963,
10.3081

■ 46.8466, 9.1587,
18.4632

■ 58.6689, -1.3566,
6.8822

■ 44.2378, 12.4542,
20.3177

■ 61.9103, -3.3881,
3.1699

■ 41.7966, 16.0201,
21.6577

■ 65.2462, -5.2170,
-0.7962

■ 39.5390, 19.8335,
22.4415

■ 68.6687, -6.8615,
-4.9878

■ 37.4807, 23.8470,
22.6478

■ 72.1709, -8.3387,
-9.3807

■ 35.6280, 27.9464,
22.4048

■ 75.7468, -9.6643,
-13.9543

■ 35.5433, 28.1410,
22.3942

■ 79.3909, -10.8529,
-18.6911

■ 82.6423, -14.4652,
-17.2039

Harmonies

Analogous

The Analogous color harmony consists of three colors that are next to each other on the color wheel.



52.5067, 9.1888, 9.7448



52.5055, 3.3911, 13.4088



52.5067, -3.8044, 14.3994

Triad

The Triadic color harmony groups three colors that are evenly spaced from another and form a triangle on the color wheel.



52.5067, 3.3892, 13.4095



52.5067, -15.9484, 1.8943



52.5067, 5.2189, -9.2913

Complementary

The Complementary color scheme is a pair of colors which are on the opposite of each other on the color wheel.



52.5055, 3.3911, 13.4088



51.7542, -6.6072, -9.5544

Split Complementary

Split-complementary colors differ from the complementary color scheme. The scheme consists of three colors, the original color and two neighbors of the complement color.



52.5067, -1.7970, -12.0969



52.5055, 3.3911, 13.4088



52.5067, -13.8093, -5.1097

Square

The Square scheme is like the rectangle color scheme, but the four colors are evenly spaced on the color wheel.



52.5067, 3.3892, 13.4095



52.5067, -14.7250, 8.2983



52.5067, -8.7237, -10.4723



52.5067, 10.2846, -3.2347

Rectangle

The Rectangle color scheme consists of four colors that form a rectangle on the color wheel.



52.5055, 3.3911, 13.4088



52.5067, -8.3645, 13.5392



52.5067, -8.7237, -10.4723



52.5067, 2.9970, -10.6804

Sweetspot

The Sweet Spot groups the original color and five complimentary colors.



52.5067, 3.3892, 13.4095



79.1884, -1.9284, 9.1027



47.8458, 17.9073, -3.6928



37.1742, -0.7194, 4.6263



92.0917, -4.9138, 5.0035



39.3538, -2.0998, 2.1382

Same Dimension

The Same Dimension uses a secret algorithm to generate beautiful new colors.



52.5067, 3.3892, 13.4095



68.3199, 6.7955, 20.3868



59.3319, -8.0326, 19.6014



28.3748, -0.6782, 3.2862



31.4415, 24.4254, 19.8017



5.8547, 1.6937, 3.6373

Inverse Universe

The Inverse Universe completely reimagines the original color for something new.



51.7542, -6.6072, -9.5544



67.1022, -9.3056, -16.6674



44.9782, 4.8937, -19.7547



28.2582, -2.2394, -0.2896



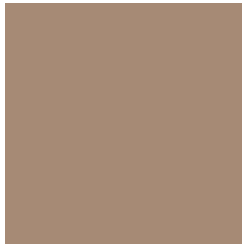
29.2473, 0.9803, -38.6727



5.5373, -1.3993, -3.9004

Previews

White Background



This preview shows how the HunterLab color 52.5055, 3.3911, 13.4088 looks on a white background.

Color Contrast Check

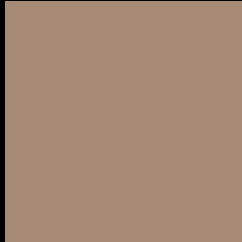
Large Text (above 18pt) WCAG AA ✓ Pass

Any Text WCAG AA × Fail

Large Text (above 18pt) WCAG AAA × Fail

Any Text WCAG AAA × Fail

Black Background



This preview shows how the HunterLab color 52.5055, 3.3911, 13.4088 looks on a black background.

Color Contrast Check

Large Text (above 18pt) WCAG AA ✓ Pass

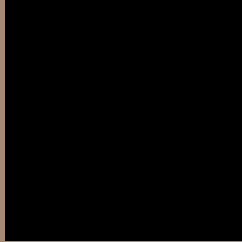
Any Text WCAG AA ✓ Pass

Large Text (above 18pt) WCAG AAA ✓ Pass

Any Text WCAG AAA × Fail

If you want to check with other color combinations, try the [Color Contrast Checker](#).

HunterLab 52.5055, 3.3911, 13.4088 Background



This preview shows how black text looks on a background with the HunterLab color 52.5055, 3.3911, 13.4088.



This preview shows how white text looks on a background with the HunterLab color 52.5055, 3.3911,

Color Blindness Simulation

Color vision deficiency is a very complex topic, and I could not describe the different causes any better than Wikipedia does, so if you want to learn more, you should check out their [article about color blindness](#).

Dichromacy



Original Color

52.5055, 3.3911, 13.4088

Protanopia

52.4939, -3.7441, 12.5687

Deuteranopia

52.5055, 3.3911, 13.4088



Tritanopia

52.4686, 10.2346, 2.2393

Trichromacy



Original Color

52.5055, 3.3911, 13.4088

Protanomaly

52.3695, -1.3045, 12.8425

Deuteranomaly

52.5055, 3.3911, 13.4088

Tritanomaly

52.3470, 7.9139, 6.4326

Monochromacy



Original Color

52.5055, 3.3911, 13.4088

Achromatopsia

52.8104, -2.8178, 2.8693

Achromatomaly

52.6713, -0.9275, 7.0511

CSS Examples

Text

The CSS property to change the color of the text to HunterLab 52.5055, 3.3911, 13.4088 is called "color". The color property can be set on classes, ids or directly on the HTML element.

This example shows how text in the color `rgb(166, 138, 117)` looks like.

```
.text, #text, p{  
    color:rgb(166, 138, 117)  
}
```

If you want to add a text shadow in that color use the text-shadow property, you can generate a text shadow directly with our [CSS Text Shadow Generator](#).

Here you see how black text with a 4 pixel rgb(166, 138, 117) colored shadow looks like.

```
.shadow{ text-shadow: 4px 4px 2px rgb(166, 138, 117) }
```

Border

The CSS property to change the border of an element to HunterLab 52.5055, 3.3911, 13.4088 is called "border". The border property can be set on classes, ids or directly on the HTML element.

This example shows the color as border, it can be applied via the CSS property "border" or "border-color".

```
.border, #border, table{ border:4px solid rgb(166, 138, 117) }
```


If only the border color should be changed use the property `border-color`.

```
.border{ border-color:rgb(166, 138, 117) }
```

If you want to add a box shadow in that color use:

Here you see how a box with a 4 pixel `rgb(166, 138, 117)` colored shadow looks like.

```
.boxshadow{ -moz-box-shadow:4px 4px 4px  
4px rgb(166, 138, 117); -webkit-box-  
shadow:4px 4px 4px 4px rgb(166, 138, 117);  
box-shadow:4px 4px 4px 4px rgb(166, 138,  
117) }
```

Background

The CSS property to change the background color of an element to HunterLab 52.5055, 3.3911, 13.4088 is called "background". The background property can be set on classes, ids or directly on the HTML element.

```
.background, #background, body{  
background: rgb(166, 138, 117) }
```

If only the background color should be changed can be used:

```
.background{ background-color: rgb(166,  
138, 117) }
```

This example shows the color as background, it is applied via the CSS property "background".

To optimize and compress your CSS code, you can use our [online CSS compressor and optimizer](#) based on csstidy. If you want to create a linear or radial gradient as background or border, check our [CSS Gradient Generator](#).

Hey! You found this booklet interesting? Support Converting Colors with the new Membership Option!

The pro membership hides all ads, plus gives you double the colors in the color bucket, and more awesome pro features!

[Learn more, Memberships starting at \\$2.50/m!](#)

**Follow me
on Twitter!**

@ConvertingColor