

Converting Colors

HunterLab(52.5265, 70.4907,
8.5488)

Have a look what the booklet for
HunterLab(52.5265, 70.4907,
8.5488) contains.

HunterLab(52.5245, 70.4960, 8.5509)	3
<i>Conversions</i>	4
<i>Details</i>	6
<i>Harmonies</i>	12
<i>Previews</i>	24
<i>Color Blindness Simulation</i>	28
<i>CSS Examples</i>	31

Color

**HunterLab(52.5245, 70.4960,
8.5509)**

Conversions

Conversions Part 1

Format	Color
Hex	FF4885
RGB	255, 72, 133
RGB Percent	100%, 28%, 52%
CMY	0.0000, 0.7176, 0.4784
CMYK	0.00, 0.72, 0.48, 0.00
HSL	340°, 100%, 64%
HSV	340°, 72%, 100%
XYZ	47.7911, 27.5882, 24.9965
YIQ	133.6710, 89.4870, 57.7670

Conversions

Conversions Part 2

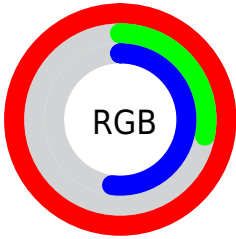
Format	Color
R _Y B	255, 72, 133
Decimal	16730245
CIE Lab	59.52, 72.09, 7.74
CIE LCh	60, 72.508, 6.126
Yxy	27.5898, 0.4761, 0.2749
Android (android.graphics.Color)	4294920325 (0xFFFF4885)
YUV	133.6710, -0.3308, 106.4055
Hunter-Lab	52.5245, 70.4960, 8.5509

Details

The HunterLab color **52.5245, 70.4960, 8.5509** is a light color, and the websafe version is hex **FF6699**. The color can be described as light washed rose. A complement of this color would be **87.6320, -55.2325, 18.4949**, and the grayscale version is **48.6746, -2.5972, 2.6446**.

A 20% lighter version of the original color is **64.4827, 49.0675, -2.1205**, and **34.4188, 60.8030, 7.8248** is the 20% darker color. If you saturate the color by 10%, you get **49.5128, 76.9873, 12.0718**, and if you desaturate by 10%, it is **56.6625, 61.7143, 5.8027**.

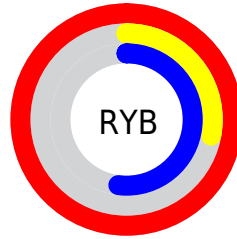
Distribution



Red (100%)

Green (28%)

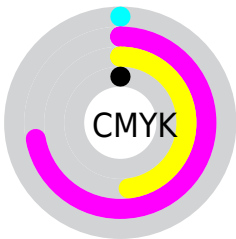
Blue (52%)



Red (100%)

Yellow (28%)

Blue (52%)

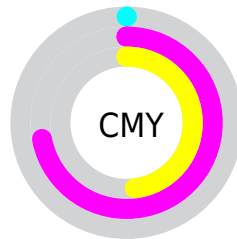


Cyan (0%)

Magenta (72%)

Yellow (48%)

Black (0%)



Cyan (0%)

Magenta (72%)

Yellow (48%)

Brightness & Saturation Gradients

These gradients show how the HunterLab color 52.5245, 70.4960, 8.5509 changes by changing the brightness by 10 percent. The first figure shows a shift by +10% for each color and the second figure -10%.

Similar to the brightness gradients but the following saturation gradients show a change of the HunterLab color 52.5245, 70.4960, 8.5509 by changing the saturation by 10% instead.

52.5245, 70.4960,
8.5509

52.5245, 70.4960,
8.5509

170.4411, 87.7175,
17.9869

42.4460, 68.1652,
7.5643

74.7187, 74.9458,
10.5515

33.1088, 65.8341,
6.5778

86.7546, 77.0415,
11.5685

24.5790, 63.6203,
5.5836

99.3752, 79.0435,
12.5993

16.9416, 61.8292,
4.5662

112.5546, 80.9526,
13.6450

10.3167, 61.3608,
3.7381

126.2701, 82.7712,
14.7062

0.0000, INF, NaN

0.0000, INF, NaN

140.5014, 84.5025,

15.7834

0.0000, NaN, NaN

155.2305, 86.1500,
16.8769

0.0000, NaN, NaN

■ 52.5245, 70.4960,
8.5509

■ 52.5245, 70.4960,
8.5509

■ 49.5128, 76.9873,
12.0718

■ 56.6625, 61.7143,
5.8027

■ 47.6420, 80.5834,
16.0775

■ 61.8216, 51.4814,
3.9321

■ 46.8142, 81.5713,
19.3929

■ 67.8688, 40.5135,
2.9125

■ 74.6687, 29.3098,
2.6439

■ 82.1007, 18.1619,
3.0044

90.0642, 7.2137,
3.8788

98.4778, -3.4808,
5.1692

100.0000, -5.3358,
5.4332

Harmonies

Analogous

The Analogous color harmony consists of three colors that are next to each other on the color wheel.



52.5260, 63.4985, -25.6259



52.5245, 70.4960, 8.5509



52.5260, 54.4716, 26.4928

Triad

The Triadic color harmony groups three colors that are evenly spaced from another and form a triangle on the color wheel.



52.5260, 70.4913, 8.5522



52.5260, -33.5065, 31.1210



52.5260, -24.8009, -79.8043

Complementary

The Complementary color scheme is a pair of colors which are on the opposite of each other on the color wheel.



52.5245, 70.4960, 8.5509



87.6320, -55.2325, 18.4949

Split Complementary

Split-complementary colors differ from the complementary color scheme. The scheme consists of three colors, the original color and two neighbors of the complement color.



52.5260, -42.7724, -42.7061



52.5245, 70.4960, 8.5509



52.5260, -46.9235, 21.0081

Square

The Square scheme is like the rectangle color scheme, but the four colors are evenly spaced on the color wheel.



52.5260, 70.4913, 8.5522



52.5260, -9.0105, 33.7542



52.5260, -49.8722, -3.5524



52.5260, 3.7017, -90.4157

Rectangle

The Rectangle color scheme consists of four colors that form a rectangle on the color wheel.



52.5245, 70.4960, 8.5509



52.5260, 34.6800, 31.4987



52.5260, -49.8722, -3.5524



52.5260, -32.0483, -69.2763

Sweetspot

The Sweet Spot groups the original color and five complimentary colors.



52.5260, 70.4913, 8.5522



81.9157, 18.4277, 2.9893



48.2972, 72.9878, -85.1027



36.9411, 9.9174, 1.3137

0.0000, NaN, NaN



46.2646, -2.4686, 2.5136

Same Dimension

The Same Dimension uses a secret algorithm to generate beautiful new colors.



52.5260, 70.4913, 8.5522



48.5832, 78.8846, 13.7333



55.9744, 52.6008, 28.9158



42.5287, 2.2109, 1.9138



33.8763, 59.0982, 13.4870



10.6616, 18.7747, 2.8857

Inverse Universe

The Inverse Universe completely reimagines the original color for something new.



52.5260, 70.4913, 8.5522



48.5832, 78.8846, 13.7333



78.8541, -30.4381, -23.0783



42.5287, 2.2109, 1.9138



33.8763, 59.0982, 13.4870



10.6616, 18.7747, 2.8857

Previews

White Background



This preview shows how the HunterLab color 52.5245, 70.4960, 8.5509 looks on a white background.

Color Contrast Check

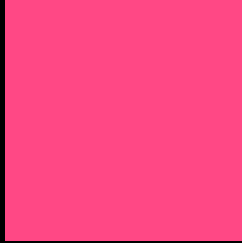
Large Text (above 18pt) WCAG AA ✓ Pass

Any Text WCAG AA × Fail

Large Text (above 18pt) WCAG AAA × Fail

Any Text WCAG AAA × Fail

Black Background



This preview shows how the HunterLab color 52.5245, 70.4960, 8.5509 looks on a black background.

Color Contrast Check

Large Text (above 18pt) WCAG AA ✓ Pass

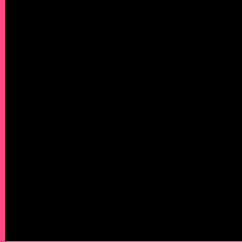
Any Text WCAG AA ✓ Pass

Large Text (above 18pt) WCAG AAA ✓ Pass

Any Text WCAG AAA × Fail

If you want to check with other color combinations, try the [Color Contrast Checker](#).

HunterLab 52.5245, 70.4960, 8.5509 Background



This preview shows how black text looks on a background with the HunterLab color 52.5245, 70.4960, 8.5509.



This preview shows how white text looks on a background with the HunterLab color 52.5245, 70.4960,

Color Blindness Simulation

Color vision deficiency is a very complex topic, and I could not describe the different causes any better than Wikipedia does, so if you want to learn more, you should check out their [article about color blindness](#).

Dichromacy



Original Color

52.5245, 70.4960, 8.5509

Protanopia

52.6132, 1.3355, -12.1089

Deuteranopia

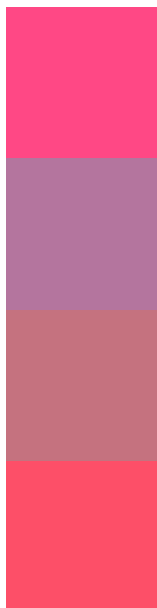
52.4640, 3.5772, 10.8409



Tritanopia

52.5072, 60.9500, 23.2401

Trichromacy



Original Color

52.5245, 70.4960, 8.5509

Protanomaly

49.8944, 24.8600, -7.2593

Deuteranomaly

50.4354, 28.0854, 7.9659

Tritanomaly

52.4157, 64.2520, 18.6088

Monochromacy



Original Color

52.5245, 70.4960, 8.5509

Achromatopsia

48.8260, -2.6052, 2.6528

Achromatomaly

47.4922, 23.4335, 1.5176

CSS Examples

Text

The CSS property to change the color of the text to HunterLab 52.5245, 70.4960, 8.5509 is called "color". The color property can be set on classes, ids or directly on the HTML element.

This example shows how text in the color `rgb(255, 72, 133)` looks like.

```
.text, #text, p{  
  color:rgb(255, 72, 133)  
}
```

If you want to add a text shadow in that color use the text-shadow property, you can generate a text shadow directly with our [CSS Text Shadow Generator](#).

Here you see how black text with a 4 pixel rgb(255, 72, 133) colored shadow looks like.

```
.shadow{ text-shadow: 4px 4px 2px rgb(255, 72, 133) }
```

Border

The CSS property to change the border of an element to HunterLab 52.5245, 70.4960, 8.5509 is called "border". The border property can be set on classes, ids or directly on the HTML element.

This example shows the color as border, it can be applied via the CSS property "border" or "border-color".

```
.border, #border, table{ border:4px solid rgb(255, 72, 133) }
```


If only the border color should be changed use the property `border-color`.

```
.border{ border-color:rgb(255, 72, 133) }
```

If you want to add a box shadow in that color use:

Here you see how a box with a 4 pixel `rgb(255, 72, 133)` colored shadow looks like.

```
.boxshadow{ -moz-box-shadow:4px 4px 4px  
4px rgb(255, 72, 133); -webkit-box-  
shadow:4px 4px 4px 4px rgb(255, 72, 133);  
box-shadow:4px 4px 4px 4px rgb(255, 72,  
133) }
```

Background

The CSS property to change the background color of an element to HunterLab 52.5245, 70.4960, 8.5509 is called "background". The background property can be set on classes, ids or directly on the HTML element.

```
.background, #background, body{  
background: rgb(255, 72, 133) }
```

If only the background color should be changed can be used:

```
.background{ background-color: rgb(255, 72,  
133) }
```

This example shows the color as background, it is applied via the CSS property "background".

To optimize and compress your CSS code, you can use our [online CSS compressor and optimizer](#) based on csstidy. If you want to create a linear or radial gradient as background or border, check our [CSS Gradient Generator](#).

Hey! You found this booklet interesting? Support Converting Colors with the new Membership Option!

The pro membership hides all ads, plus gives you double the colors in the color bucket, and more awesome pro features!

[Learn more, Memberships starting at \\$2.50/m!](#)

**Follow me
on Twitter!**

@ConvertingColor