

Converting Colors

HunterLab(52.5606, 1.3773,
13.3962)

Have a look what the booklet for
HunterLab(52.5606, 1.3773,
13.3962) contains.

HunterLab(52.6516, 1.0541, 13.5106)	3
<i>Conversions</i>	4
<i>Details</i>	6
<i>Harmonies</i>	12
<i>Previews</i>	24
<i>Color Blindness Simulation</i>	28
<i>CSS Examples</i>	31

Color

**HunterLab(52.6516, 1.0541,
13.5106)**

Conversions

Conversions Part 1

Format	Color
Hex	A28C75
RGB	162, 140, 117
RGB Percent	64%, 55%, 46%
CMY	0.3647, 0.4510, 0.5412
CMYK	0.00, 0.14, 0.28, 0.36
HSL	31°, 19%, 55%
HSV	31°, 28%, 64%
XYZ	27.4893, 27.7219, 20.7316
YIQ	143.9560, 20.4950, -2.4890

Conversions

Conversions Part 2

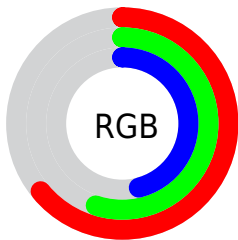
Format	Color
R_{YB}	160, 162, 117
Decimal	10652789
CIE _{Lab}	59.64, 4.64, 15.35
CIE _{LCh}	60, 16.034, 73.197
Yxy	27.7232, 0.3620, 0.3650
Android (android.graphics.Color)	4288842869 (0xFFA28C75)
YUV	143.9560, -13.2893, 15.8246
Hunter-Lab	52.6516, 1.0541, 13.5106

Details

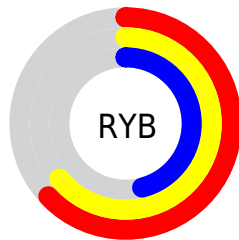
The HunterLab color $52.6516, 1.0541, 13.5106$ is a dark color, and the websafe version is hex 999999 . A complement of this color would be $49.8549, -4.5744, -10.0114$, and the grayscale version is $52.8396, -2.8194, 2.8709$.

A 20% lighter version of the original color is $74.9666, -0.0700, 16.5060$, and $33.2521, 1.7208, 10.4809$ is the 20% darker color. If you saturate the color by 10%, you get $50.1426, 3.0352, 16.4531$, and if you desaturate by 10%, it is $55.2595, -0.6835, 10.1515$.

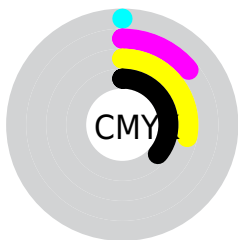
Distribution



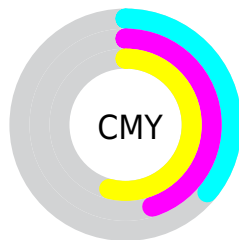
- Red (64%)
- Green (55%)
- Blue (46%)



- Red (63%)
- Yellow (64%)
- Blue (46%)



- Cyan (0%)
- Magenta (14%)
- Yellow (28%)
- Black (36%)



- Cyan (36%)
- Magenta (45%)
- Yellow (54%)

Brightness & Saturation Gradients

These gradients show how the HunterLab color 52.6516, 1.0541, 13.5106 changes by changing the brightness by 10 percent. The first figure shows a shift by +10% for each color and the second figure -10%.

Similar to the brightness gradients but the following saturation gradients show a change of the HunterLab color 52.6516, 1.0541, 13.5106 by changing the saturation by 10% instead.

■ 52.6516, 1.0541,
13.5106

■ 52.6516, 1.0541,
13.5106

170.6288, -3.4384,
26.1120

■ 42.5642, 1.3344,
12.0500

■ 74.8613, 0.3343,
16.3540

■ 33.2176, 1.5572,
10.5429

■ 86.9045, -0.0929,
17.7532

■ 24.6775, 1.7118,
8.9661

■ 99.5320, -0.5611,
19.1453

■ 17.0286, 1.7855,
7.2789

112.7181, -1.0677,
20.5344

■ 10.3905, 1.7576,
6.7678

126.4399, -1.6105,
21.9236

0.0000, INF, NaN

0.0000, NaN, NaN

140.6774, -2.1876,

23.3150

0.0000, NaN, NaN

155.4124, -2.7974,
24.7107

0.0000, NaN, NaN

■ 52.6516, 1.0541,
13.5106

■ 52.6516, 1.0541,
13.5106

■ 50.1426, 3.0352,
16.4531

■ 55.2595, -0.6835,
10.1515

■ 47.7369, 5.2781,
18.9362

■ 57.9552, -2.1875,
6.4126

■ 45.4441, 7.7901,
20.9197

■ 60.7332, -3.4758,
2.3305

■ 43.2734, 10.5738,
22.3661

■ 63.5875, -4.5645,
-2.0622

■ 41.2335, 13.6223,
23.2463

■ 66.5125, -5.4692,
-6.7364

■ 39.3331, 16.9143,
23.5493

■ 69.5033, -6.2049,
-11.6659

■ 37.5756, 20.3919,
23.3477

■ 72.5554, -6.7854,
-16.8279

■ 37.2012, 21.1667,
23.2938

■ 75.6648, -7.2235,
-22.2020

■ 78.5021, -9.3338,
-23.2449

Harmonies

Analogous

The Analogous color harmony consists of three colors that are next to each other on the color wheel.



52.6528, 7.1448, 10.7463



52.6516, 1.0541, 13.5106



52.6528, -5.7876, 13.6699

Triad

The Triadic color harmony groups three colors that are evenly spaced from another and form a triangle on the color wheel.



52.6528, 1.0523, 13.5113



52.6528, -15.0397, -0.0775



52.6528, 6.5169, -7.1179

Complementary

The Complementary color scheme is a pair of colors which are on the opposite of each other on the color wheel.



52.6516, 1.0541, 13.5106



49.8549, -4.5744, -10.0114

Split Complementary

Split-complementary colors differ from the complementary color scheme. The scheme consists of three colors, the original color and two neighbors of the complement color.



52.6528, 0.2307, -10.8603



52.6516, 1.0541, 13.5106



52.6528, -12.0803, -6.4589

Square

The Square scheme is like the rectangle color scheme, but the four colors are evenly spaced on the color wheel.



52.6528, 1.0523, 13.5113



52.6528, -14.8450, 6.3632



52.6528, -6.5685, -10.6048



52.6528, 10.4086, -0.8888

Rectangle

The Rectangle color scheme consists of four colors that form a rectangle on the color wheel.



52.6516, 1.0541, 13.5106



52.6528, -9.8361, 12.3153



52.6528, -6.5685, -10.6048



52.6528, 4.6002, -8.7421

Sweetspot

The Sweet Spot groups the original color and five complimentary colors.



52.6528, 1.0523, 13.5113



77.9493, -2.8768, 8.8379



47.2049, 15.5512, -1.5613



36.6878, -1.2317, 4.5488



90.9709, -4.8540, 4.9426



38.3822, -2.0480, 2.0854

Same Dimension

The Same Dimension uses a secret algorithm to generate beautiful new colors.



52.6528, 1.0523, 13.5113



68.9478, 2.9396, 20.5961



58.9971, -9.3562, 19.2764



27.6705, -0.9505, 3.3631



33.1504, 18.4894, 20.7508



5.7030, 0.8400, 3.5288

Inverse Universe

The Inverse Universe completely reimagines the original color for something new.



49.8549, -4.5744, -10.0114



64.4197, -6.1209, -17.5266



43.7190, 6.0451, -19.3118



27.2117, -1.8807, -0.4847



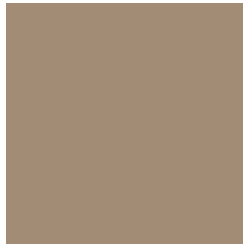
25.6278, 6.6528, -46.3940



4.8228, -0.9390, -4.0011

Previews

White Background



This preview shows how the HunterLab color 52.6516, 1.0541, 13.5106 looks on a white background.

Color Contrast Check

Large Text (above 18pt) WCAG AA ✓ Pass

Any Text WCAG AA × Fail

Large Text (above 18pt) WCAG AAA × Fail

Any Text WCAG AAA × Fail

Black Background



This preview shows how the HunterLab color 52.6516, 1.0541, 13.5106 looks on a black background.

Color Contrast Check

Large Text (above 18pt) WCAG AA ✓ Pass

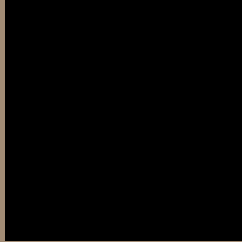
Any Text WCAG AA ✓ Pass

Large Text (above 18pt) WCAG AAA ✓ Pass

Any Text WCAG AAA × Fail

If you want to check with other color combinations, try the [Color Contrast Checker](#).

HunterLab 52.6516, 1.0541, 13.5106 Background



This preview shows how black text looks on a background with the HunterLab color 52.6516, 1.0541, 13.5106.



This preview shows how white text looks on a background with the HunterLab color 52.6516, 1.0541,

Color Blindness Simulation

Color vision deficiency is a very complex topic, and I could not describe the different causes any better than Wikipedia does, so if you want to learn more, you should check out their [article about color blindness](#).

Dichromacy



Original Color

52.6516, 1.0541, 13.5106

Protanopia

52.5854, -3.4247, 12.6649

Deuteranopia

52.6087, 3.7377, 13.5157



Tritanopia

52.6146, 8.0382, 1.9173

Trichromacy



Original Color

52.6516, 1.0541, 13.5106

Protanomaly

52.6516, -1.7800, 13.1120

Deuteranomaly

52.6772, 2.5608, 13.5620

Tritanomaly

52.4720, 5.5635, 6.5304

Monochromacy



Original Color

52.6516, 1.0541, 13.5106

Achromatopsia

52.8104, -2.8178, 2.8693

Achromatomaly

52.8635, -1.7203, 7.2480

CSS Examples

Text

The CSS property to change the color of the text to HunterLab 52.6516, 1.0541, 13.5106 is called "color". The color property can be set on classes, ids or directly on the HTML element.

This example shows how text in the color `rgb(162, 140, 117)` looks like.

```
.text, #text, p{  
    color:rgb(162, 140, 117)  
}
```

If you want to add a text shadow in that color use the text-shadow property, you can generate a text shadow directly with our [CSS Text Shadow Generator](#).

Here you see how black text with a 4 pixel rgb(162, 140, 117) colored shadow looks like.

```
.shadow{ text-shadow: 4px 4px 2px rgb(162, 140, 117) }
```

Border

The CSS property to change the border of an element to HunterLab 52.6516, 1.0541, 13.5106 is called "border". The border property can be set on classes, ids or directly on the HTML element.

This example shows the color as border, it can be applied via the CSS property "border" or "border-color".

```
.border, #border, table{ border:4px solid rgb(162, 140, 117) }
```


If only the border color should be changed use the property `border-color`.

```
.border{ border-color:rgb(162, 140, 117) }
```

If you want to add a box shadow in that color use:

Here you see how a box with a 4 pixel `rgb(162, 140, 117)` colored shadow looks like.

```
.boxshadow{ -moz-box-shadow:4px 4px 4px 4px rgb(162, 140, 117); -webkit-box-shadow:4px 4px 4px 4px rgb(162, 140, 117); box-shadow:4px 4px 4px 4px rgb(162, 140, 117) }
```

Background

The CSS property to change the background color of an element to HunterLab 52.6516, 1.0541, 13.5106 is called "background". The background property can be set on classes, ids or directly on the HTML element.

```
.background, #background, body{  
background: rgb(162, 140, 117) }
```

If only the background color should be changed can be used:

```
.background{ background-color: rgb(162,  
140, 117) }
```

This example shows the color as background, it is applied via the CSS property "background".

To optimize and compress your CSS code, you can use our [online CSS compressor and optimizer](#) based on csstidy. If you want to create a linear or radial gradient as background or border, check our [CSS Gradient Generator](#).

Hey! You found this booklet interesting? Support Converting Colors with the new Membership Option!

The pro membership hides all ads, plus gives you double the colors in the color bucket, and more awesome pro features!

[Learn more, Memberships starting at \\$2.50/m!](#)

**Follow me
on Twitter!**

@ConvertingColor