

# Converting Colors

HunterLab(52.5759, 14.8651,  
6.7633)

Have a look what the booklet for  
HunterLab(52.5759, 14.8651,  
6.7633) contains.

<b>HunterLab(52.4769, 15.0126, 6.7013)</b> .....	3
<b><i>Conversions</i></b> .....	4
<b><i>Details</i></b> .....	6
<b><i>Harmonies</i></b> .....	12
<b><i>Previews</i></b> .....	24
<b><i>Color Blindness Simulation</i></b> .....	28
<b><i>CSS Examples</i></b> .....	31

# Color

**HunterLab(52.4769, 15.0126,  
6.7013)**

# Conversions

## Conversions Part 1

Format	Color
Hex	B58287
RGB	181, 130, 135
RGB Percent	71%, 51%, 53%
CMY	0.2902, 0.4902, 0.4706
CMYK	0.00, 0.28, 0.25, 0.29
HSL	354°, 26%, 61%
HSV	354°, 28%, 71%
XYZ	31.4118, 27.5383, 26.5814
YIQ	145.8190, 28.7910, 12.3670

# Conversions

## Conversions Part 2

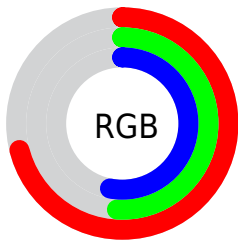
<b>Format</b>	<b>Color</b>
<b>RYB</b>	181, 130, 135
Decimal	11895431
CIELab	59.47, 20.39, 5.12
CIELCh	59, 21.024, 14.103
Yxy	27.5395, 0.3673, 0.3220
Android (android.graphics.Color)	4290085511 (0xFFB58287)
YUV	145.8190, -5.3338, 30.8537
Hunter-Lab	52.4769, 15.0126, 6.7013

# Details

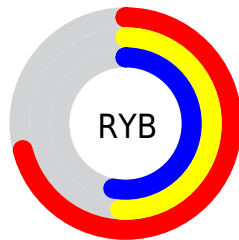
The HunterLab color  $52.4769, 15.0126, 6.7013$  is a light color, and the websafe version is hex  $CC9999$ . A complement of this color would be  $63.9756, -18.3000, 1.0332$ , and the grayscale version is  $53.5543, -2.8575, 2.9097$ .

A 20% lighter version of the original color is  $74.6157, 15.9975, 8.4530$ , and  $33.0231, 13.8882, 5.1614$  is the 20% darker color. If you saturate the color by 10%, you get  $47.6604, 22.0229, 8.1697$ , and if you desaturate by 10%, it is  $57.6901, 8.1874, 5.4580$ .

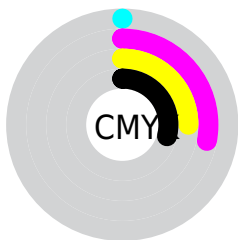
# Distribution



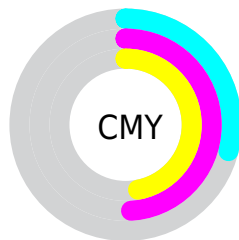
- Red (71%)
- Green (51%)
- Blue (53%)



- Red (71%)
- Yellow (51%)
- Blue (53%)



- Cyan (0%)
- Magenta (28%)
- Yellow (25%)
- Black (29%)



- Cyan (29%)
- Magenta (49%)
- Yellow (47%)

# Brightness & Saturation Gradients

These gradients show how the HunterLab color 52.4769, 15.0126, 6.7013 changes by changing the brightness by 10 percent. The first figure shows a shift by +10% for each color and the second figure -10%.

Similar to the brightness gradients but the following saturation gradients show a change of the HunterLab color 52.4769, 15.0126, 6.7013 by changing the saturation by 10% instead.



■ 52.4769, 15.0126,  
6.7013

■ 52.4769, 15.0126,  
6.7013

170.3702, 16.4061,  
15.0925

■ 42.4015, 14.4826,  
5.8681

■ 74.6649, 15.7908,  
8.4258

■ 33.0678, 13.8460,  
5.0498

■ 86.6980, 16.0622,  
9.3172

■ 24.5418, 13.0833,  
4.2431

■ 99.3160, 16.2643,  
10.2290

■ 16.9088, 12.1734,  
3.4401

112.4929, 16.4027,  
11.1611

■ 10.2889, 11.0948,  
2.6877

126.2059, 16.4823,  
12.1137

0.0000, INF, NaN

0.0000, NaN, NaN

140.4349, 16.5072,

13.0866

0.0000, NaN, NaN

155.1618, 16.4807,  
14.0796

0.0000, NaN, NaN

■ 52.4769, 15.0126,  
6.7013

■ 52.4769, 15.0126,  
6.7013

■ 47.6604, 22.0229,  
8.1697

■ 57.6901, 8.1874,  
5.4580

■ 43.3136, 29.1122,  
9.8684

■ 63.2336, 1.5930,  
4.4150

■ 39.5275, 36.0494,  
11.7753

■ 69.0589, -4.7729,  
3.5466

■ 36.3985, 42.4515,  
13.8155

■ 75.1262, -10.9292,  
2.8272

■ 34.0127, 47.7972,  
15.8464

■ 81.4041, -16.9020,  
2.2339

■ 32.4175, 51.5580,  
17.6708

■ 87.8672, -22.7185,  
1.7470

■ 31.5414, 53.5994,  
19.0664

■ 93.9155, -27.5821,  
0.6591

■ 31.4111, 53.9288,  
19.2408

■ 94.1083, -26.4808,  
-2.0791

# Harmonies

## Analogous

The Analogous color harmony consists of three colors that are next to each other on the color wheel.



52.4781, 14.8525, -1.8435



52.4769, 15.0126, 6.7013



52.4781, 10.1773, 13.0479

# Triad

The Triadic color harmony groups three colors that are evenly spaced from another and form a triangle on the color wheel.



52.4781, 15.0105, 6.7022



52.4781, -14.2843, 13.3333



52.4781, -7.4482, -15.5179

# Complementary

The Complementary color scheme is a pair of colors which are on the opposite of each other on the color wheel.



52.4769, 15.0126, 6.7013



63.9756, -18.3000, 1.0332

# Split Complementary

Split-complementary colors differ from the complementary color scheme. The scheme consists of three colors, the original color and two neighbors of the complement color.



52.4781, -14.6325, -9.9049



52.4769, 15.0126, 6.7013



52.4781, -18.3945, 7.1584

# Square

The Square scheme is like the rectangle color scheme, but the four colors are evenly spaced on the color wheel.



52.4781, 15.0105, 6.7022



52.4781, -6.9431, 16.4175



52.4781, -18.5175, -1.3042



52.4781, 1.4698, -15.6958



# Rectangle

The Rectangle color scheme consists of four colors that form a rectangle on the color wheel.



52.4769, 15.0126, 6.7013



52.4781, 4.9515, 15.5856



52.4781, -18.5175, -1.3042



52.4781, -10.1316, -14.1667

# Sweetspot

The Sweet Spot groups the original color and five complimentary colors.



52.4781, 15.0105, 6.7022



84.6549, 2.0966, 5.9032



53.4052, 20.8691, -15.2599



38.8304, 1.5769, 2.8338



95.4677, -5.0939, 5.1869



42.2927, -2.2566, 2.2978



# Same Dimension

The Same Dimension uses a secret algorithm to generate beautiful new colors.



52.4781, 15.0105, 6.7022



66.0410, 26.0657, 10.1893



57.7729, 4.1210, 13.9962



29.1862, 1.0871, 2.1098



26.0898, 44.8116, 15.8347



4.6750, 8.1233, 2.1131



# Inverse Universe

The Inverse Universe completely reimagines the original color for something new.



52.4781, 15.0105, 6.7022



66.0410, 26.0657, 10.1893



57.8215, -7.8879, -9.3352



29.1862, 1.0871, 2.1098



26.0898, 44.8116, 15.8347



4.6750, 8.1233, 2.1131



# Previews

## White Background



This preview shows how the HunterLab color 52.4769, 15.0126, 6.7013 looks on a white background.

## Color Contrast Check

Large Text (above 18pt) WCAG AA ✓ Pass

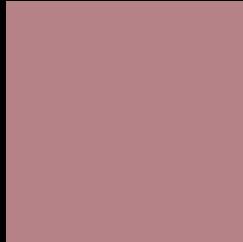
Any Text WCAG AA × Fail

Large Text (above 18pt) WCAG AAA × Fail

Any Text WCAG AAA × Fail



# Black Background



This preview shows how the HunterLab color 52.4769, 15.0126, 6.7013 looks on a black background.

## Color Contrast Check

Large Text (above 18pt) WCAG AA ✓ Pass

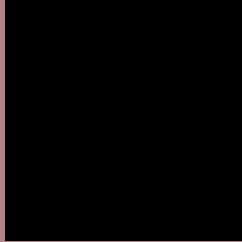
Any Text WCAG AA ✓ Pass

Large Text (above 18pt) WCAG AAA ✓ Pass

Any Text WCAG AAA × Fail

If you want to check with other color combinations, try the [Color Contrast Checker](#).

# HunterLab 52.4769, 15.0126, 6.7013 Background



This preview shows how black text looks on a background with the HunterLab color 52.4769, 15.0126, 6.7013.



This preview shows how white text looks on a background with the HunterLab color 52.4769, 15.0126,



# Color Blindness Simulation

Color vision deficiency is a very complex topic, and I could not describe the different causes any better than Wikipedia does, so if you want to learn more, you should check out their [article about color blindness](#).

## Dichromacy



### Original Color

52.4769, 15.0126, 6.7013

### Protanopia

52.6393, -2.0569, 3.5755

### Deuteranopia

52.6648, 3.2954, 7.5276



## Tritanopia

52.3339, 16.0825, 4.8567

# Trichromacy



## Original Color

52.4769, 15.0126, 6.7013

## Protanomaly

52.3564, 3.9967, 4.6709

## Deuteranomaly

52.5874, 7.2759, 7.1026

## Tritanomaly

52.3061, 15.9402, 5.2546

# Monochromacy



## Original Color

52.4769, 15.0126, 6.7013

## Achromatopsia

53.6135, -2.8607, 2.9129

## Achromatomaly

52.9906, 3.4667, 4.0799

# CSS Examples

## Text

The CSS property to change the color of the text to HunterLab 52.4769, 15.0126, 6.7013 is called "color". The color property can be set on classes, ids or directly on the HTML element.

This example shows how text in the color `rgb(181, 130, 135)` looks like.

```
.text, #text, p{  
    color:rgb(181, 130, 135)  
}
```

If you want to add a text shadow in that color use the text-shadow property, you can generate a text shadow directly with our [CSS Text Shadow Generator](#).

Here you see how black text with a 4 pixel rgb(181, 130, 135) colored shadow looks like.

```
.shadow{ text-shadow: 4px 4px 2px rgb(181, 130, 135) }
```

## Border

The CSS property to change the border of an element to HunterLab 52.4769, 15.0126, 6.7013 is called "border". The border property can be set on classes, ids or directly on the HTML element.

This example shows the color as border, it can be applied via the CSS property "border" or "border-color".

```
.border, #border, table{ border:4px solid rgb(181, 130, 135) }
```



If only the border color should be changed use the property `border-color`.

```
.border{ border-color:rgb(181, 130, 135) }
```

If you want to add a box shadow in that color use:

Here you see how a box with a 4 pixel `rgb(181, 130, 135)` colored shadow looks like.

```
.boxshadow{ -moz-box-shadow:4px 4px 4px  
4px rgb(181, 130, 135); -webkit-box-  
shadow:4px 4px 4px 4px rgb(181, 130, 135);  
box-shadow:4px 4px 4px 4px rgb(181, 130,  
135) }
```

# Background

The CSS property to change the background color of an element to HunterLab 52.4769, 15.0126, 6.7013 is called "background". The background property can be set on classes, ids or directly on the HTML element.

```
.background, #background, body{  
background: rgb(181, 130, 135) }
```

If only the background color should be changed can be used:

```
.background{ background-color: rgb(181,  
130, 135) }
```

This example shows the color as background, it is applied via the CSS property "background".

To optimize and compress your CSS code, you can use our [online CSS compressor and optimizer](#) based on csstidy. If you want to create a linear or radial gradient as background or border, check our [CSS Gradient Generator](#).

Hey! You found this booklet interesting? Support Converting Colors with the new Membership Option!

The pro membership hides all ads, plus gives you double the colors in the color bucket, and more awesome pro features!

**[Learn more, Memberships starting at \\$2.50/m!](#)**

**Follow me  
on Twitter!**

@ConvertingColor