

Converting Colors

HunterLab(52.5850, 8.5331,
7.9387)

Have a look what the booklet for
HunterLab(52.5850, 8.5331, 7.9387)
contains.

HunterLab(52.5850, 8.5331, 7.9387)	3
<i>Conversions</i>	4
<i>Details</i>	6
<i>Harmonies</i>	12
<i>Previews</i>	24
<i>Color Blindness Simulation</i>	28
<i>CSS Examples</i>	31

Color

**HunterLab(52.5850, 8.5331,
7.9387)**

Conversions

Conversions Part 1

Format	Color
Hex	AB8784
RGB	171, 135, 132
RGB Percent	67%, 53%, 52%
CMY	0.3294, 0.4706, 0.4823
CMYK	0.00, 0.21, 0.23, 0.33
HSL	5°, 19%, 59%
HSV	5°, 23%, 67%
XYZ	29.6234, 27.6518, 25.6059
YIQ	145.4220, 22.4190, 6.6990

Conversions

Conversions Part 2

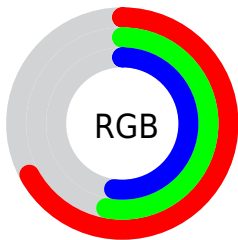
Format	Color
R_{YB}	171, 135, 132
Decimal	11241348
CIE _{Lab}	59.57, 13.25, 6.85
CIE _{LCh}	60, 14.920, 27.328
Yxy	27.6531, 0.3574, 0.3336
Android (android.graphics.Color)	4289431428 (0xFFAB8784)
YUV	145.4220, -6.6170, 22.4319
Hunter-Lab	52.5850, 8.5331, 7.9387

Details

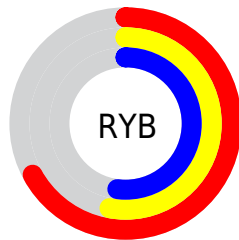
The HunterLab color $52.5850, 8.5331, 7.9387$ is a dark color, and the websafe version is hex $CC9999$. A complement of this color would be $59.8750, -12.7550, -1.4804$, and the grayscale version is $53.4016, -2.8494, 2.9014$.

A 20% lighter version of the original color is $74.6995, 8.8719, 9.7542$, and $33.1256, 8.2074, 5.9081$ is the 20% darker color. If you saturate the color by 10%, you get $48.1039, 14.1770, 9.9349$, and if you desaturate by 10%, it is $57.3551, 3.1402, 5.9601$.

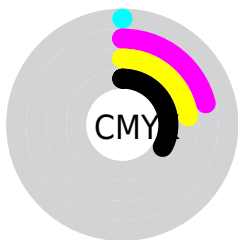
Distribution



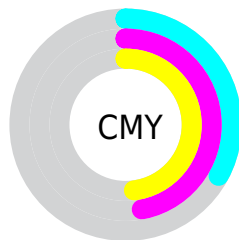
- Red (67%)
- Green (53%)
- Blue (52%)



- Red (67%)
- Yellow (53%)
- Blue (52%)



- Cyan (0%)
- Magenta (21%)
- Yellow (23%)
- Black (33%)



- Cyan (33%)
- Magenta (47%)
- Yellow (48%)

Brightness & Saturation Gradients

These gradients show how the HunterLab color 52.5850, 8.5331, 7.9387 changes by changing the brightness by 10 percent. The first figure shows a shift by +10% for each color and the second figure -10%.

Similar to the brightness gradients but the following saturation gradients show a change of the HunterLab color 52.5850, 8.5331, 7.9387 by changing the saturation by 10% instead.

■ 52.5850, 8.5331,
7.9387

■ 52.5850, 8.5331,
7.9387

170.5302, 7.3132,
17.0181

■ 42.5021, 8.3578,
7.0044

■ 74.7864, 8.6512,
9.8446

■ 33.1605, 8.0943,
6.0756

■ 86.8258, 8.6132,
10.8187

■ 24.6257, 7.7255,
5.1460

■ 99.4497, 8.5178,
11.8089

■ 16.9829, 7.2295,
4.2026

112.6322, 8.3693,
12.8159

■ 10.3517, 6.5748,
3.3790

126.3507, 8.1716,
13.8401

0.0000, INF, NaN

0.0000, NaN, NaN

140.5850, 7.9279,

14.8818

0.0000, NaN, NaN

155.3169, 7.6410,
15.9411

0.0000, NaN, NaN

■ 52.5850, 8.5331,
7.9387

■ 52.5850, 8.5331,
7.9387

■ 48.1039, 14.1770,
9.9349

■ 57.3551, 3.1402,
5.9601

■ 43.9589, 20.0546,
11.9194

■ 62.3690, -2.0032,
4.0090

■ 40.2125, 26.0864,
13.8442

■ 67.5948, -6.9208,
2.0905

■ 36.9347, 32.1075,
15.6300

■ 73.0054, -11.6391,
0.2040

■ 34.1996, 37.8375,
17.1647

■ 78.5791, -16.1856,
-1.6530

■ 32.0732, 42.8833,
18.3169

■ 84.2983, -20.5854,
-3.4843

■ 30.5945, 46.8132,
18.9788

■ 90.1483, -24.8612,
-5.2939

■ 29.9168, 48.7235,
19.2876

■ 93.4869, -28.7924,
-2.8987

Harmonies

Analogous

The Analogous color harmony consists of three colors that are next to each other on the color wheel.



52.5862, 10.0057, 2.3159



52.5850, 8.5331, 7.9387



52.5862, 3.9740, 11.7631

Triad

The Triadic color harmony groups three colors that are evenly spaced from another and form a triangle on the color wheel.



52.5862, 8.5312, 7.9396



52.5862, -12.7352, 8.7766



52.5862, -3.3790, -10.1697

Complementary

The Complementary color scheme is a pair of colors which are on the opposite of each other on the color wheel.



52.5850, 8.5331, 7.9387



59.8750, -12.7550, -1.4804

Split Complementary

Split-complementary colors differ from the complementary color scheme. The scheme consists of three colors, the original color and two neighbors of the complement color.



52.5862, -9.2641, -7.9306



52.5850, 8.5331, 7.9387



52.5862, -14.5026, 3.4032

Square

The Square scheme is like the rectangle color scheme, but the four colors are evenly spaced on the color wheel.



52.5862, 8.5312, 7.9396



52.5862, -8.3191, 12.2043



52.5862, -13.2623, -2.7776



52.5862, 2.9384, -8.5873

Rectangle

The Rectangle color scheme consists of four colors that form a rectangle on the color wheel.



52.5850, 8.5331, 7.9387



52.5862, -0.0923, 13.0162



52.5862, -13.2623, -2.7776



52.5862, -5.4710, -9.8335

Sweetspot

The Sweet Spot groups the original color and five complimentary colors.



52.5862, 8.5312, 7.9396



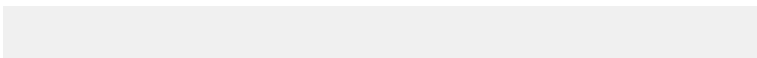
80.5320, 0.2518, 6.4871



52.9178, 15.8454, -8.8411



37.8487, 0.3040, 3.1337



93.2148, -4.9737, 5.0645



40.3295, -2.1519, 2.1912

Same Dimension

The Same Dimension uses a secret algorithm to generate beautiful new colors.



52.5862, 8.5312, 7.9396



67.5207, 14.9043, 11.8715



57.8519, -0.8649, 13.2600



28.4794, 0.6346, 2.5428



26.0381, 42.0938, 16.7815



4.6897, 5.9288, 2.9936

Inverse Universe

The Inverse Universe completely reimagines the original color for something new.



59.8750, -12.7550, -1.4804



79.1772, -19.2349, -3.2186



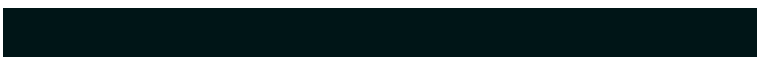
54.1382, -3.7467, -8.9005



29.9415, -3.6150, 0.6585



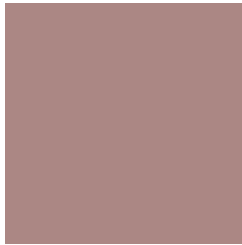
45.4341, -21.5432, -10.2830



7.7765, -3.8376, -1.4357

Previews

White Background



This preview shows how the HunterLab color 52.5850, 8.5331, 7.9387 looks on a white background.

Color Contrast Check

Large Text (above 18pt) WCAG AA ✓ Pass

Any Text WCAG AA × Fail

Large Text (above 18pt) WCAG AAA × Fail

Any Text WCAG AAA × Fail

Black Background



This preview shows how the HunterLab color 52.5850, 8.5331, 7.9387 looks on a black background.

Color Contrast Check

Large Text (above 18pt) WCAG AA ✓ Pass

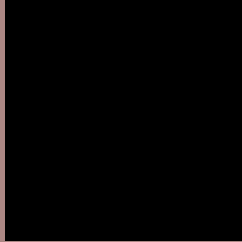
Any Text WCAG AA ✓ Pass

Large Text (above 18pt) WCAG AAA ✓ Pass

Any Text WCAG AAA × Fail

If you want to check with other color combinations, try the [Color Contrast Checker](#).

HunterLab 52.5850, 8.5331, 7.9387 Background



This preview shows how black text looks on a background with the HunterLab color 52.5850, 8.5331, 7.9387.



This preview shows how white text looks on a background with the HunterLab color 52.5850, 8.5331,

7.9387.

Color Blindness Simulation

Color vision deficiency is a very complex topic, and I could not describe the different causes any better than Wikipedia does, so if you want to learn more, you should check out their [article about color blindness](#).

Dichromacy



Original Color

52.5850, 8.5331, 7.9387

Protanopia

52.6483, -2.3589, 6.1693

Deuteranopia

52.7118, 3.3496, 8.3869



Tritanopia

52.4970, 11.6146, 2.7519

Trichromacy



Original Color

52.5850, 8.5331, 7.9387

Protanomaly

52.5103, 1.4578, 6.5010

Deuteranomaly

52.7399, 4.8489, 8.4434

Tritanomaly

52.6444, 10.5148, 4.6803

Monochromacy



Original Color

52.5850, 8.5331, 7.9387

Achromatopsia

53.2117, -2.8392, 2.8911

Achromatomaly

52.7382, 1.0731, 4.6226

CSS Examples

Text

The CSS property to change the color of the text to HunterLab 52.5850, 8.5331, 7.9387 is called "color". The color property can be set on classes, ids or directly on the HTML element.

This example shows how text in the color `rgb(171, 135, 132)` looks like.

```
.text, #text, p{  
    color:rgb(171, 135, 132)  
}
```

If you want to add a text shadow in that color use the text-shadow property, you can generate a text shadow directly with our [CSS Text Shadow Generator](#).

Here you see how black text with a 4 pixel rgb(171, 135, 132) colored shadow looks like.

```
.shadow{ text-shadow: 4px 4px 2px rgb(171, 135, 132) }
```

Border

The CSS property to change the border of an element to HunterLab 52.5850, 8.5331, 7.9387 is called "border". The border property can be set on classes, ids or directly on the HTML element.

This example shows the color as border, it can be applied via the CSS property "border" or "border-color".

```
.border, #border, table{ border:4px solid rgb(171, 135, 132) }
```


If only the border color should be changed use the property `border-color`.

```
.border{ border-color:rgb(171, 135, 132) }
```

If you want to add a box shadow in that color use:

Here you see how a box with a 4 pixel `rgb(171, 135, 132)` colored shadow looks like.

```
.boxshadow{ -moz-box-shadow:4px 4px 4px  
4px rgb(171, 135, 132); -webkit-box-  
shadow:4px 4px 4px 4px rgb(171, 135, 132);  
box-shadow:4px 4px 4px 4px rgb(171, 135,  
132) }
```

Background

The CSS property to change the background color of an element to HunterLab 52.5850, 8.5331, 7.9387 is called "background". The background property can be set on classes, ids or directly on the HTML element.

```
.background, #background, body{  
background: rgb(171, 135, 132) }
```

If only the background color should be changed can be used:

```
.background{ background-color: rgb(171,  
135, 132) }
```

This example shows the color as background, it is applied via the CSS property "background".

To optimize and compress your CSS code, you can use our [online CSS compressor and optimizer](#) based on csstidy. If you want to create a linear or radial gradient as background or border, check our [CSS Gradient Generator](#).

Hey! You found this booklet interesting? Support Converting Colors with the new Membership Option!

The pro membership hides all ads, plus gives you double the colors in the color bucket, and more awesome pro features!

[Learn more, Memberships starting at \\$2.50/m!](#)

**Follow me
on Twitter!**

@ConvertingColor