

Converting Colors

HunterLab(52.6175, 16.2028,
10.9408)

Have a look what the booklet for
HunterLab(52.6175, 16.2028,
10.9408) contains.

HunterLab(52.6745, 16.4134, 10.9063)	3
<i>Conversions</i>	4
<i>Details</i>	6
<i>Harmonies</i>	12
<i>Previews</i>	24
<i>Color Blindness Simulation</i>	28
<i>CSS Examples</i>	31

Color

**HunterLab(52.6745, 16.4134,
10.9063)**

Conversions

Conversions Part 1

Format	Color
Hex	BB817D
RGB	187, 129, 125
RGB Percent	73%, 51%, 49%
CMY	0.2667, 0.4941, 0.5098
CMYK	0.00, 0.31, 0.33, 0.27
HSL	4°, 31%, 61%
HSV	4°, 33%, 73%
XYZ	32.0455, 27.7460, 23.0686
YIQ	145.8860, 35.8520, 11.0520

Conversions

Conversions Part 2

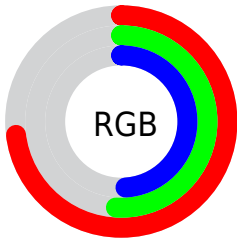
Format	Color
RYB	187, 129, 125
Decimal	12288381
CIELab	59.66, 21.88, 11.22
CIElCh	60, 24.591, 27.140
Yxy	27.7474, 0.3867, 0.3349
Android (android.graphics.Color)	4290478461 (0xFFBB817D)
YUV	145.8860, -10.2968, 36.0570
Hunter-Lab	52.6745, 16.4134, 10.9063

Details

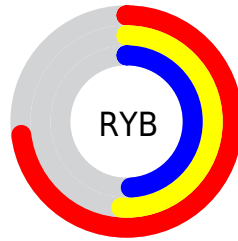
The HunterLab color **52.6745, 16.4134, 10.9063** is a dark color, and the websafe version is hex **CC9999**. A complement of this color would be **64.6633, -18.3115, -3.5825**, and the grayscale version is **53.5987, -2.8599, 2.9121**.

A 20% lighter version of the original color is **74.7685, 17.3439, 12.9757**, and **33.1953, 15.1261, 8.5072** is the 20% darker color. If you saturate the color by 10%, you get **48.0550, 23.0720, 13.0901**, and if you desaturate by 10%, it is **57.6895, 10.0013, 8.7284**.

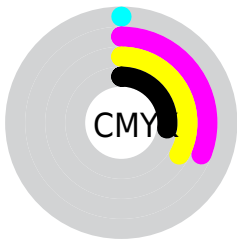
Distribution



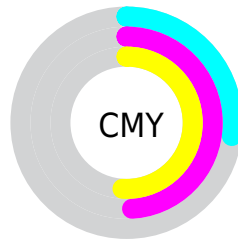
- Red (73%)
- Green (51%)
- Blue (49%)



- Red (73%)
- Yellow (51%)
- Blue (49%)



- Cyan (0%)
- Magenta (31%)
- Yellow (33%)
- Black (27%)



- Cyan (27%)
- Magenta (49%)
- Yellow (51%)

Brightness & Saturation Gradients

These gradients show how the HunterLab color 52.6745, 16.4134, 10.9063 changes by changing the brightness by 10 percent. The first figure shows a shift by +10% for each color and the second figure -10%.

Similar to the brightness gradients but the following saturation gradients show a change of the HunterLab color 52.6745, 16.4134, 10.9063 by changing the saturation by 10% instead.

■ 52.6745, 16.4134,
10.9063

■ 52.6745, 16.4134,
10.9063

170.6627, 18.3294,
21.7675

■ 42.5856, 15.8141,
9.7074

■ 74.8871, 17.3217,
13.2848

■ 33.2373, 15.1055,
8.4883

■ 86.9316, 17.6547,
14.4737

■ 24.6953, 14.2683,
7.2343

■ 99.5604, 17.9163,
15.6671

■ 17.0444, 13.2823,
5.9184

112.7477, 18.1123,
16.8676

■ 10.4038, 12.1309,
5.1163

126.4707, 18.2476,
18.0767

0.0000, INF, NaN

0.0000, NaN, NaN

140.7092, 18.3266,

19.2958

0.0000, NaN, NaN

155.4453, 18.3528,
20.5258

0.0000, NaN, NaN

■ 52.6745, 16.4134,
10.9063

■ 52.6745, 16.4134,
10.9063

■ 48.0550, 23.0720,
13.0901

■ 57.6895, 10.0013,
8.7284

■ 43.8997, 29.8821,
15.2214

■ 63.0357, 3.8756,
6.5828

■ 40.2929, 36.6313,
17.2085

■ 68.6654, -1.9713,
4.4826

■ 37.3208, 42.9697,
18.9190

■ 74.5391, -7.5628,
2.4304

■ 35.0573, 48.4232,
20.1985

■ 80.6253, -12.9293,
0.4240

■ 33.5391, 52.5000,
20.9245

■ 86.8985, -18.1020,
-1.5413

■ 32.9084, 54.2887,
21.2284

■ 93.3069, -23.2867,
-3.0290

■ 94.5012, -25.0278,
-1.5638

Harmonies

Analogous

The Analogous color harmony consists of three colors that are next to each other on the color wheel.



52.6758, 18.9364, 1.8987



52.6745, 16.4134, 10.9063



52.6758, 8.6105, 16.5985

Triad

The Triadic color harmony groups three colors that are evenly spaced from another and form a triangle on the color wheel.



52.6758, 16.4111, 10.9072



52.6758, -18.7423, 12.2710



52.6758, -3.8184, -20.1832

Complementary

The Complementary color scheme is a pair of colors which are on the opposite of each other on the color wheel.



52.6745, 16.4134, 10.9063



64.6633, -18.3115, -3.5825

Split Complementary

Split-complementary colors differ from the complementary color scheme. The scheme consists of three colors, the original color and two neighbors of the complement color.



52.6758, -13.3399, -15.9799



52.6745, 16.4134, 10.9063



52.6758, -21.5222, 3.8178

Square

The Square scheme is like the rectangle color scheme, but the four colors are evenly spaced on the color wheel.



52.6758, 16.4111, 10.9072



52.6758, -11.7219, 17.2707



52.6758, -19.6237, -6.6814



52.6758, 6.7294, -17.2779

Rectangle

The Rectangle color scheme consists of four colors that form a rectangle on the color wheel.



52.6745, 16.4134, 10.9063



52.6758, 1.7620, 18.3815



52.6758, -19.6237, -6.6814



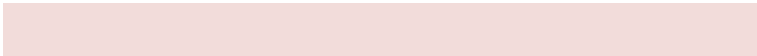
52.6758, -7.2379, -19.5383

Sweetspot

The Sweet Spot groups the original color and five complimentary colors.



52.6758, 16.4111, 10.9072



86.5771, 2.8068, 7.9617



53.5620, 27.8014, -16.6450



40.1353, 1.8421, 3.9236



97.7295, -5.2146, 5.3098



44.2712, -2.3622, 2.4053

Same Dimension

The Same Dimension uses a secret algorithm to generate beautiful new colors.



52.6758, 16.4111, 10.9072



65.8073, 28.6151, 16.7884



60.7260, 1.3445, 18.4990



31.0365, 0.7740, 2.7538



27.3877, 44.8225, 17.6609



5.7274, 7.8834, 3.6672

Inverse Universe

The Inverse Universe completely reimagines the original color for something new.



64.6633, -18.3115, -3.5825



85.1257, -27.7763, -6.6784



55.4057, -4.1680, -16.2421



32.7126, -4.0210, 0.7441



48.5977, -23.5127, -9.9858



9.7839, -4.8564, -1.7455

Previews

White Background



This preview shows how the HunterLab color 52.6745, 16.4134, 10.9063 looks on a white background.

Color Contrast Check

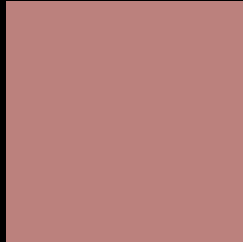
Large Text (above 18pt) WCAG AA ✓ Pass

Any Text WCAG AA × Fail

Large Text (above 18pt) WCAG AAA × Fail

Any Text WCAG AAA × Fail

Black Background



This preview shows how the HunterLab color 52.6745, 16.4134, 10.9063 looks on a black background.

Color Contrast Check

Large Text (above 18pt) WCAG AA ✓ Pass

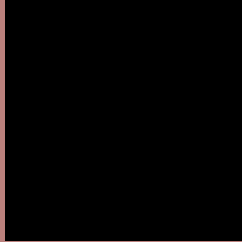
Any Text WCAG AA ✓ Pass

Large Text (above 18pt) WCAG AAA ✓ Pass

Any Text WCAG AAA × Fail

If you want to check with other color combinations, try the [Color Contrast Checker](#).

HunterLab 52.6745, 16.4134, 10.9063 Background



This preview shows how black text looks on a background with the HunterLab color 52.6745, 16.4134, 10.9063.



This preview shows how white text looks on a background with the HunterLab color 52.6745, 16.4134,

Color Blindness Simulation

Color vision deficiency is a very complex topic, and I could not describe the different causes any better than Wikipedia does, so if you want to learn more, you should check out their [article about color blindness](#).

Dichromacy



Original Color

52.6745, 16.4134, 10.9063

Protanopia

52.9429, -2.9623, 7.7207

Deuteranopia

52.8154, 3.3024, 11.5663



Tritanopia

52.6082, 19.3747, 6.0833

Trichromacy



Original Color

52.6745, 16.4134, 10.9063

Protanomaly

52.7859, 3.5473, 8.8672

Deuteranomaly

52.5998, 8.1809, 11.0608

Tritanomaly

52.7477, 18.3220, 7.8810

Monochromacy



Original Color

52.6745, 16.4134, 10.9063

Achromatopsia

53.6135, -2.8607, 2.9129

Achromatomaly

53.0737, 3.5233, 5.9045

CSS Examples

Text

The CSS property to change the color of the text to HunterLab 52.6745, 16.4134, 10.9063 is called "color". The color property can be set on classes, ids or directly on the HTML element.

This example shows how text in the color `rgb(187, 129, 125)` looks like.

```
.text, #text, p{  
    color:rgb(187, 129, 125)  
}
```

If you want to add a text shadow in that color use the text-shadow property, you can generate a text shadow directly with our [CSS Text Shadow Generator](#).

Here you see how black text with a 4 pixel rgb(187, 129, 125) colored shadow looks like.

```
.shadow{ text-shadow: 4px 4px 2px rgb(187, 129, 125) }
```

Border

The CSS property to change the border of an element to HunterLab 52.6745, 16.4134, 10.9063 is called "border". The border property can be set on classes, ids or directly on the HTML element.

This example shows the color as border, it can be applied via the CSS property "border" or "border-color".

```
.border, #border, table{ border:4px solid rgb(187, 129, 125) }
```


If only the border color should be changed use the property `border-color`.

```
.border{ border-color:rgb(187, 129, 125) }
```

If you want to add a box shadow in that color use:

Here you see how a box with a 4 pixel `rgb(187, 129, 125)` colored shadow looks like.

```
.boxshadow{ -moz-box-shadow:4px 4px 4px  
4px rgb(187, 129, 125); -webkit-box-  
shadow:4px 4px 4px 4px rgb(187, 129, 125);  
box-shadow:4px 4px 4px 4px rgb(187, 129,  
125) }
```

Background

The CSS property to change the background color of an element to HunterLab 52.6745, 16.4134, 10.9063 is called "background". The background property can be set on classes, ids or directly on the HTML element.

```
.background, #background, body{  
background: rgb(187, 129, 125) }
```

If only the background color should be changed can be used:

```
.background{ background-color: rgb(187,  
129, 125) }
```

This example shows the color as background, it is applied via the CSS property "background".

To optimize and compress your CSS code, you can use our [online CSS compressor and optimizer](#) based on csstidy. If you want to create a linear or radial gradient as background or border, check our [CSS Gradient Generator](#).

Hey! You found this booklet interesting? Support Converting Colors with the new Membership Option!

The pro membership hides all ads, plus gives you double the colors in the color bucket, and more awesome pro features!

[Learn more, Memberships starting at \\$2.50/m!](#)

**Follow me
on Twitter!**

@ConvertingColor