

Converting Colors

HunterLab(52.6655, 66.9758,
15.3673)

Have a look what the booklet for
HunterLab(52.6655, 66.9758,
15.3673) contains.

HunterLab(52.7310, 66.7815, 15.4245)	3
<i>Conversions</i>	4
<i>Details</i>	6
<i>Harmonies</i>	12
<i>Previews</i>	24
<i>Color Blindness Simulation</i>	28
<i>CSS Examples</i>	31

Color

**HunterLab(52.7310, 66.7815,
15.4245)**

Conversions

Conversions Part 1

Format	Color
Hex	FF4D73
RGB	255, 77, 115
RGB Percent	100%, 30%, 45%
CMY	0.0000, 0.6980, 0.5490
CMYK	0.00, 0.70, 0.55, 0.00
HSL	347°, 100%, 65%
HSV	347°, 70%, 100%
XYZ	46.9884, 27.8056, 19.1102
YIQ	134.5540, 93.8900, 49.5540

Conversions

Conversions Part 2

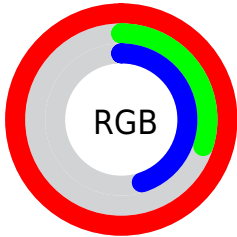
Format	Color
R_{YB}	255, 77, 115
Decimal	16731507
CIE _{Lab}	59.71, 69.00, 18.56
CIE _{LCh}	60, 71.456, 15.057
Yxy	27.8072, 0.5004, 0.2961
Android (android.graphics.Color)	4294921587 (0xFFFF4D73)
YUV	134.5540, -9.6401, 105.6311
Hunter-Lab	52.7310, 66.7815, 15.4245

Details

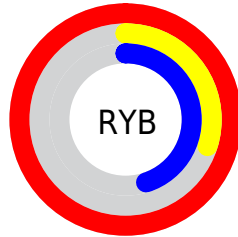
The HunterLab color **52.7310, 66.7815, 15.4245** is a dark color, and the websafe version is hex **FF3366**. The color can be described as middle washed rose. A complement of this color would be **88.3789, -50.9565, 9.5225**, and the grayscale version is **49.0584, -2.6176, 2.6654**.

A 20% lighter version of the original color is **64.7621, 44.2149, 7.2101**, and **34.0760, 59.5453, 12.8005** is the 20% darker color. If you saturate the color by 10%, you get **49.4952, 73.9016, 18.8397**, and if you desaturate by 10%, it is **57.1091, 57.6483, 12.3803**.

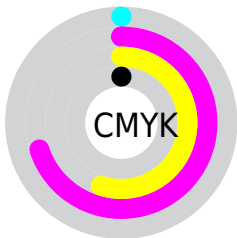
Distribution



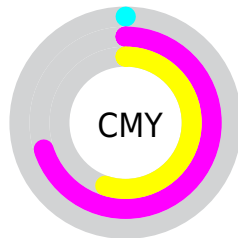
- Red (100%)
- Green (30%)
- Blue (45%)



- Red (100%)
- Yellow (30%)
- Blue (45%)



- Cyan (0%)
- Magenta (70%)
- Yellow (55%)
- Black (0%)



- Cyan (0%)
- Magenta (70%)
- Yellow (55%)

Brightness & Saturation Gradients

These gradients show how the HunterLab color 52.7310, 66.7815, 15.4245 changes by changing the brightness by 10 percent. The first figure shows a shift by +10% for each color and the second figure -10%.

Similar to the brightness gradients but the following saturation gradients show a change of the HunterLab color 52.7310, 66.7815, 15.4245 by changing the saturation by 10% instead.

■ 52.7310, 66.7815,
15.4245

■ 52.7310, 66.7815,
15.4245

170.7467, 83.2070,
29.4134

■ 42.6384, 64.5164,
13.7548

■ 74.9509, 71.0687,
18.6402

■ 33.2860, 62.2294,
12.0172

■ 86.9987, 73.0759,
20.2073

■ 24.7394, 60.0184,
10.1820

■ 99.6306, 74.9874,
21.7579

■ 17.0834, 58.1435,
8.1993

■ 112.8208, 76.8051,
23.2973

■ 10.4369, 57.3759,
7.3058

126.5466, 78.5322,
24.8297

0.0000, INF, NaN

0.0000, INF, NaN

140.7880, 80.1723,

26.3582

0.0000, NaN, NaN

155.5267, 81.7293,
27.8855

0.0000, NaN, NaN

■ 52.7310, 66.7815,
15.4245

■ 52.7310, 66.7815,
15.4245

■ 49.4952, 73.9016,
18.8397

■ 57.1091, 57.6483,
12.3803

■ 47.4402, 78.3050,
22.3095

■ 62.5074, 47.3496,
9.8833

■ 46.4168, 80.0194,
25.4133

■ 68.7839, 36.5526,
7.9879

■ 46.4007, 80.0453,
25.4665

■ 75.7993, 25.6916,
6.6655

■ 83.4329, 15.0013,
5.8493

91.5850, 4.5835,
5.4631

100.0000, -5.3359,
5.4331

Harmonies

Analogous

The Analogous color harmony consists of three colors that are next to each other on the color wheel.



52.7325, 66.8211, -13.6749



52.7310, 66.7815, 15.4245



52.7325, 45.4479, 29.0883

Triad

The Triadic color harmony groups three colors that are evenly spaced from another and form a triangle on the color wheel.



52.7325, 66.7767, 15.4257



52.7325, -38.2986, 29.0587



52.7325, -17.1303, -84.7436

Complementary

The Complementary color scheme is a pair of colors which are on the opposite of each other on the color wheel.



52.7310, 66.7815, 15.4245



88.3789, -50.9565, 9.5225

Split Complementary

Split-complementary colors differ from the complementary color scheme. The scheme consists of three colors, the original color and two neighbors of the complement color.



52.7325, -38.2394, -54.0088



52.7310, 66.7815, 15.4245



52.7325, -48.4310, 15.3464

Square

The Square scheme is like the rectangle color scheme, but the four colors are evenly spaced on the color wheel.



52.7325, 66.7767, 15.4257



52.7325, -17.2310, 33.3465



52.7325, -48.4121, -13.8151



52.7325, 13.3347, -84.6762

Rectangle

The Rectangle color scheme consists of four colors that form a rectangle on the color wheel.



52.7310, 66.7815, 15.4245



52.7325, 24.3249, 32.5630



52.7325, -48.4121, -13.8151



52.7325, -25.3812, -77.1388

Sweetspot

The Sweet Spot groups the original color and five complimentary colors.



52.7325, 66.7767, 15.4257



82.4872, 16.2718, 5.9231



52.1486, 76.9843, -74.0817



37.1696, 8.8864, 2.8300

0.0000, NaN, NaN



46.2646, -2.4686, 2.5136

Same Dimension

The Same Dimension uses a secret algorithm to generate beautiful new colors.



52.7325, 66.7767, 15.4257



48.4895, 76.1104, 20.3121



60.9008, 40.6371, 31.4005



42.4859, 1.9806, 2.5249



33.5673, 57.9582, 18.0224



10.5464, 18.3517, 4.5622

Inverse Universe

The Inverse Universe completely reimagines the original color for something new.



52.7325, 66.7767, 15.4257



48.4895, 76.1104, 20.3121



72.2878, -20.7191, -33.4156



42.4859, 1.9806, 2.5249



33.5673, 57.9582, 18.0224



10.5464, 18.3517, 4.5622

Previews

White Background



This preview shows how the HunterLab color 52.7310, 66.7815, 15.4245 looks on a white background.

Color Contrast Check

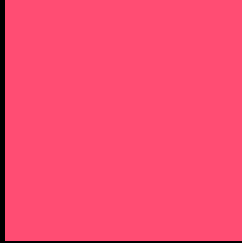
Large Text (above 18pt) WCAG AA ✓ Pass

Any Text WCAG AA × Fail

Large Text (above 18pt) WCAG AAA × Fail

Any Text WCAG AAA × Fail

Black Background



This preview shows how the HunterLab color 52.7310, 66.7815, 15.4245 looks on a black background.

Color Contrast Check

Large Text (above 18pt) WCAG AA ✓ Pass

Any Text WCAG AA ✓ Pass

Large Text (above 18pt) WCAG AAA ✓ Pass

Any Text WCAG AAA × Fail

If you want to check with other color combinations, try the [Color Contrast Checker](#).

HunterLab 52.7310, 66.7815, 15.4245 Background



This preview shows how black text looks on a background with the HunterLab color 52.7310, 66.7815, 15.4245.



This preview shows how white text looks on a background with the HunterLab color 52.7310, 66.7815,

15.4245.

Color Blindness Simulation

Color vision deficiency is a very complex topic, and I could not describe the different causes any better than Wikipedia does, so if you want to learn more, you should check out their [article about color blindness](#).

Dichromacy



Original Color

52.7310, 66.7815, 15.4245

Protanopia

52.8148, -1.0993, 1.0731

Deuteranopia

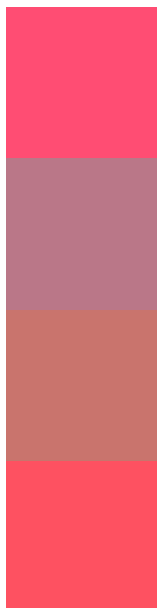
52.6912, 3.5514, 17.1869



Tritanopia

52.8635, 61.7554, 23.5424

Trichromacy



Original Color

52.7310, 66.7815, 15.4245

Protanomaly

50.4087, 22.5862, 4.0606

Deuteranomaly

51.0024, 26.5663, 15.0735

Tritanomaly

52.7435, 63.2860, 20.8953

Monochromacy



Original Color

52.7310, 66.7815, 15.4245

Achromatopsia

49.2221, -2.6264, 2.6743

Achromatomaly

48.1423, 21.4368, 4.8894

CSS Examples

Text

The CSS property to change the color of the text to HunterLab 52.7310, 66.7815, 15.4245 is called "color". The color property can be set on classes, ids or directly on the HTML element.

This example shows how text in the color `rgb(255, 77, 115)` looks like.

```
.text, #text, p{  
    color:rgb(255, 77, 115)  
}
```

If you want to add a text shadow in that color use the text-shadow property, you can generate a text shadow directly with our [CSS Text Shadow Generator](#).

Here you see how black text with a 4 pixel rgb(255, 77, 115) colored shadow looks like.

```
.shadow{ text-shadow: 4px 4px 2px rgb(255, 77, 115) }
```

Border

The CSS property to change the border of an element to HunterLab 52.7310, 66.7815, 15.4245 is called "border". The border property can be set on classes, ids or directly on the HTML element.

This example shows the color as border, it can be applied via the CSS property "border" or "border-color".

```
.border, #border, table{ border:4px solid rgb(255, 77, 115) }
```


If only the border color should be changed use the property border-color.

```
.border{ border-color:rgb(255, 77, 115) }
```

If you want to add a box shadow in that color use:

Here you see how a box with a 4 pixel rgb(255, 77, 115) colored shadow looks like.

```
.boxshadow{ -moz-box-shadow:4px 4px 4px  
4px rgb(255, 77, 115); -webkit-box-  
shadow:4px 4px 4px 4px rgb(255, 77, 115);  
box-shadow:4px 4px 4px 4px rgb(255, 77,  
115) }
```

Background

The CSS property to change the background color of an element to HunterLab 52.7310, 66.7815, 15.4245 is called "background". The background property can be set on classes, ids or directly on the HTML element.

```
.background, #background, body{  
background: rgb(255, 77, 115) }
```

If only the background color should be changed can be used:

```
.background{ background-color: rgb(255, 77,  
115) }
```

This example shows the color as background, it is applied via the CSS property "background".

To optimize and compress your CSS code, you can use our [online CSS compressor and optimizer](#) based on csstidy. If you want to create a linear or radial gradient as background or border, check our [CSS Gradient Generator](#).

Hey! You found this booklet interesting? Support Converting Colors with the new Membership Option!

The pro membership hides all ads, plus gives you double the colors in the color bucket, and more awesome pro features!

[Learn more, Memberships starting at \\$2.50/m!](#)

**Follow me
on Twitter!**

@ConvertingColor