

Converting Colors

HunterLab(52.6699, 68.1740,
8.7508)

Have a look what the booklet for
HunterLab(52.6699, 68.1740,
8.7508) contains.

HunterLab(52.6735, 68.2000, 8.6734)	3
<i>Conversions</i>	4
<i>Details</i>	6
<i>Harmonies</i>	12
<i>Previews</i>	24
<i>Color Blindness Simulation</i>	28
<i>CSS Examples</i>	31

Color

**HunterLab(52.6735, 68.2000,
8.6734)**

Conversions

Conversions Part 1

Format	Color
Hex	FD4C85
RGB	253, 76, 133
RGB Percent	99%, 30%, 52%
CMY	0.0078, 0.7019, 0.4784
CMYK	0.00, 0.70, 0.47, 0.01
HSL	341°, 98%, 65%
HSV	341°, 70%, 99%
XYZ	47.3261, 27.7450, 25.0513
YIQ	135.4210, 87.1950, 55.2510

Conversions

Conversions Part 2

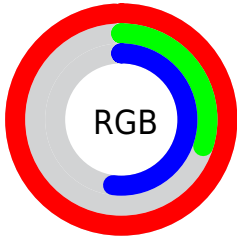
Format	Color
R _Y B	253, 76, 133
Decimal	16600197
CIE Lab	59.66, 70.19, 7.89
CIE LCh	60, 70.628, 6.417
Yxy	27.7465, 0.4727, 0.2771
Android (android.graphics.Color)	4294790277 (0xFFFD4C85)
YUV	135.4210, -1.1936, 103.1168
Hunter-Lab	52.6735, 68.2000, 8.6734

Details

The HunterLab color **52.6735, 68.2000, 8.6734** is a light color, and the websafe version is hex **FF6699**. The color can be described as light washed rose. A complement of this color would be **87.0479, -53.7583, 17.1219**, and the grayscale version is **49.3714, -2.6343, 2.6824**.

A 20% lighter version of the original color is **65.1256, 47.4860, -1.3304**, and **34.2293, 60.4887, 7.6226** is the 20% darker color. If you saturate the color by 10%, you get **49.4798, 75.1095, 12.0610**, and if you desaturate by 10%, it is **56.9715, 59.1794, 6.0455**.

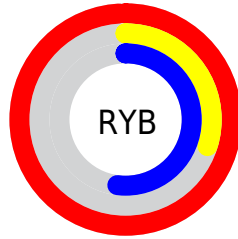
Distribution



Red (99%)

Green (30%)

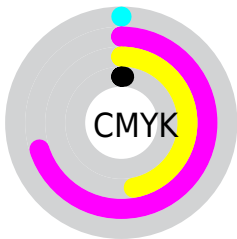
Blue (52%)



Red (99%)

Yellow (30%)

Blue (52%)

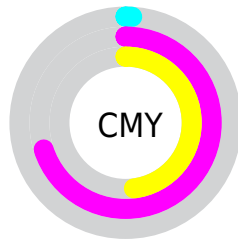


Cyan (0%)

Magenta (70%)

Yellow (47%)

Black (1%)



Cyan (1%)

Magenta (70%)

Yellow (48%)

Brightness & Saturation Gradients

These gradients show how the HunterLab color 52.6735, 68.2000, 8.6734 changes by changing the brightness by 10 percent. The first figure shows a shift by +10% for each color and the second figure -10%.

Similar to the brightness gradients but the following saturation gradients show a change of the HunterLab color 52.6735, 68.2000, 8.6734 by changing the saturation by 10% instead.

52.6735, 68.2000,
8.6734

52.6735, 68.2000,
8.6734

170.6616, 84.9313,
18.1745

42.5848, 65.9093,
7.6774

74.8863, 72.5503,
10.6910

33.2366, 63.6043,
6.6806

86.9307, 74.5915,
11.7158

24.6947, 61.3902,
5.6752

99.5594, 76.5377,
12.7541

17.0438, 59.5434,
4.6451

112.7467, 78.3905,
13.8068

10.4034, 58.8805,
3.7922

126.4696, 80.1526,
14.8748

0.0000, INF, NaN

0.0000, INF, NaN

140.7081, 81.8276,

15.9586

0.0000, NaN, NaN

155.4442, 83.4193,
17.0584

0.0000, NaN, NaN

■ 52.6735, 68.2000,
8.6734

■ 52.6735, 68.2000,
8.6734

■ 49.4798, 75.1095,
12.0610

■ 56.9715, 59.1794,
6.0455

■ 47.4242, 79.2387,
15.9478

■ 62.2596, 48.8776,
4.2621

■ 46.3543, 80.6688,
19.8823

■ 68.4035, 37.9658,
3.2888

■ 46.3505, 80.6733,
19.8983

■ 75.2705, 26.8953,
3.0264

■ 82.7444, 15.9215,
3.3587

■ 90.7289, 5.1648,
4.1774

■ 99.1464, -5.3340,
5.3909

■ 99.8111, -5.9934,
5.1991

Harmonies

Analogous

The Analogous color harmony consists of three colors that are next to each other on the color wheel.



52.6750, 61.6623, -24.3628



52.6735, 68.2000, 8.6734



52.6750, 52.5276, 26.2473

Triad

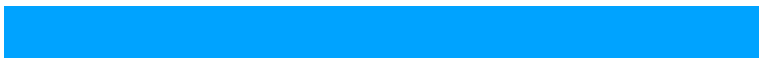
The Triadic color harmony groups three colors that are evenly spaced from another and form a triangle on the color wheel.



52.6750, 68.1954, 8.6747



52.6750, -33.0418, 30.7619



52.6750, -24.0885, -77.0282

Complementary

The Complementary color scheme is a pair of colors which are on the opposite of each other on the color wheel.



52.6735, 68.2000, 8.6734



87.0479, -53.7583, 17.1219

Split Complementary

Split-complementary colors differ from the complementary color scheme. The scheme consists of three colors, the original color and two neighbors of the complement color.



52.6750, -41.8681, -41.5925



52.6735, 68.2000, 8.6734



52.6750, -46.1645, 20.5240

Square

The Square scheme is like the rectangle color scheme, but the four colors are evenly spaced on the color wheel.



52.6750, 68.1954, 8.6747



52.6750, -9.1474, 33.5200



52.6750, -48.9863, -3.6874



52.6750, 3.8347, -86.8498

Rectangle

The Rectangle color scheme consists of four colors that form a rectangle on the color wheel.



52.6735, 68.2000, 8.6734



52.6750, 33.3051, 31.2475



52.6750, -48.9863, -3.6874



52.6750, -31.2370, -67.0243

Sweetspot

The Sweet Spot groups the original color and five complimentary colors.



52.6750, 68.1954, 8.6747



82.6690, 17.2214, 3.3287



48.7156, 70.7069, -81.8433



37.2643, 9.3767, 1.4793

0.0000, NaN, NaN



46.2646, -2.4686, 2.5136

Same Dimension

The Same Dimension uses a secret algorithm to generate beautiful new colors.



52.6750, 68.1954, 8.6747



48.9417, 77.8488, 13.7286



56.2244, 50.5566, 28.3178



42.5247, 2.1891, 1.9718



33.8408, 58.9677, 14.0053



10.6491, 18.7290, 3.0666

Inverse Universe

The Inverse Universe completely reimagines the original color for something new.



52.6750, 68.1954, 8.6747



48.9417, 77.8488, 13.7286



78.5319, -30.0723, -22.2944



42.5247, 2.1891, 1.9718



33.8408, 58.9677, 14.0053



10.6491, 18.7290, 3.0666

Previews

White Background



This preview shows how the HunterLab color 52.6735, 68.2000, 8.6734 looks on a white background.

Color Contrast Check

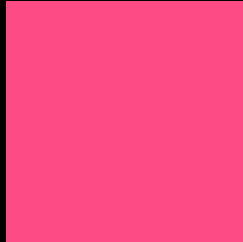
Large Text (above 18pt) WCAG AA ✓ Pass

Any Text WCAG AA × Fail

Large Text (above 18pt) WCAG AAA × Fail

Any Text WCAG AAA × Fail

Black Background



This preview shows how the HunterLab color 52.6735, 68.2000, 8.6734 looks on a black background.

Color Contrast Check

Large Text (above 18pt) WCAG AA ✓ Pass

Any Text WCAG AA ✓ Pass

Large Text (above 18pt) WCAG AAA ✓ Pass

Any Text WCAG AAA × Fail

If you want to check with other color combinations, try the [Color Contrast Checker](#).

HunterLab 52.6735, 68.2000, 8.6734 Background



This preview shows how black text looks on a background with the HunterLab color 52.6735, 68.2000, 8.6734.



This preview shows how white text looks on a background with the HunterLab color 52.6735, 68.2000,

8.6734.

Color Blindness Simulation

Color vision deficiency is a very complex topic, and I could not describe the different causes any better than Wikipedia does, so if you want to learn more, you should check out their [article about color blindness](#).

Dichromacy



Original Color

52.6735, 68.2000, 8.6734

Protanopia

52.9041, 0.7244, -10.5667

Deuteranopia

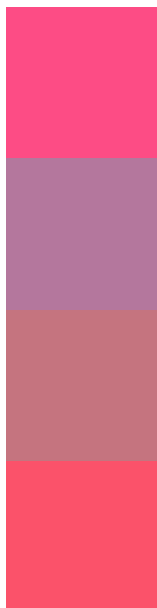
52.8392, 3.4302, 11.2225



Tritanopia

52.4968, 59.5019, 22.4654

Trichromacy



Original Color

52.6735, 68.2000, 8.6734

Protanomaly

50.3302, 23.6572, -6.1495

Deuteranomaly

50.8856, 27.0682, 8.4344

Tritanomaly

52.5209, 62.3955, 18.0624

Monochromacy



Original Color

52.6735, 68.2000, 8.6734

Achromatopsia

49.2221, -2.6264, 2.6743

Achromatomaly

48.1880, 21.9104, 2.3263

CSS Examples

Text

The CSS property to change the color of the text to HunterLab 52.6735, 68.2000, 8.6734 is called "color". The color property can be set on classes, ids or directly on the HTML element.

This example shows how text in the color `rgb(253, 76, 133)` looks like.

```
.text, #text, p{  
    color:rgb(253, 76, 133)  
}
```

If you want to add a text shadow in that color use the text-shadow property, you can generate a text shadow directly with our [CSS Text Shadow Generator](#).

Here you see how black text with a 4 pixel rgb(253, 76, 133) colored shadow looks like.

```
.shadow{ text-shadow: 4px 4px 2px rgb(253, 76, 133) }
```

Border

The CSS property to change the border of an element to HunterLab 52.6735, 68.2000, 8.6734 is called "border". The border property can be set on classes, ids or directly on the HTML element.

This example shows the color as border, it can be applied via the CSS property "border" or "border-color".

```
.border, #border, table{ border:4px solid rgb(253, 76, 133) }
```


If only the border color should be changed use the property `border-color`.

```
.border{ border-color:rgb(253, 76, 133) }
```

If you want to add a box shadow in that color use:

Here you see how a box with a 4 pixel `rgb(253, 76, 133)` colored shadow looks like.

```
.boxshadow{ -moz-box-shadow:4px 4px 4px  
4px rgb(253, 76, 133); -webkit-box-  
shadow:4px 4px 4px 4px rgb(253, 76, 133);  
box-shadow:4px 4px 4px 4px rgb(253, 76,  
133) }
```

Background

The CSS property to change the background color of an element to HunterLab 52.6735, 68.2000, 8.6734 is called "background". The background property can be set on classes, ids or directly on the HTML element.

```
.background, #background, body{  
background: rgb(253, 76, 133) }
```

If only the background color should be changed can be used:

```
.background{ background-color: rgb(253, 76,  
133) }
```

This example shows the color as background, it is applied via the CSS property "background".

To optimize and compress your CSS code, you can use our [online CSS compressor and optimizer](#) based on csstidy. If you want to create a linear or radial gradient as background or border, check our [CSS Gradient Generator](#).

Hey! You found this booklet interesting? Support Converting Colors with the new Membership Option!

The pro membership hides all ads, plus gives you double the colors in the color bucket, and more awesome pro features!

[Learn more, Memberships starting at \\$2.50/m!](#)

**Follow me
on Twitter!**

@ConvertingColor