

Converting Colors

HunterLab(52.6754, 10.2822,
7.2491)

Have a look what the booklet for
HunterLab(52.6754, 10.2822,
7.2491) contains.

HunterLab(52.6973, 10.3588, 7.2773)	3
<i>Conversions</i>	4
<i>Details</i>	6
<i>Harmonies</i>	12
<i>Previews</i>	24
<i>Color Blindness Simulation</i>	28
<i>CSS Examples</i>	31

Color

**HunterLab(52.6973, 10.3588,
7.2773)**

Conversions

Conversions Part 1

Format	Color
Hex	AE8686
RGB	174, 134, 134
RGB Percent	68%, 53%, 53%
CMY	0.3176, 0.4745, 0.4745
CMYK	0.00, 0.23, 0.23, 0.32
HSL	0°, 20%, 60%
HSV	0°, 23%, 68%
XYZ	30.2837, 27.7701, 26.3183
YIQ	145.9600, 23.8400, 8.4800

Conversions

Conversions Part 2

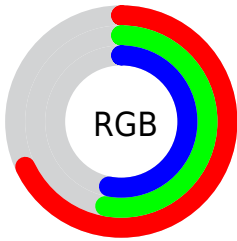
Format	Color
R_{YB}	174, 134, 134
Decimal	11437702
CIE _{Lab}	59.68, 15.29, 5.90
CIE _{LCh}	60, 16.390, 21.100
Yxy	27.7713, 0.3589, 0.3291
Android (android.graphics.Color)	4289627782 (0xFFAE8686)
YUV	145.9600, -5.8963, 24.5911
Hunter-Lab	52.6973, 10.3588, 7.2773

Details

The HunterLab color $52.6973, 10.3588, 7.2773$ is a dark color, and the websafe version is hex $CC9999$. A complement of this color would be $61.9640, -14.5054, -0.3885$, and the grayscale version is $53.6146, -2.8607, 2.9130$.

A 20% lighter version of the original color is $74.8007, 10.7831, 9.0157$, and $33.2351, 9.8104, 5.6881$ is the 20% darker color. If you saturate the color by 10%, you get $47.8587, 16.7952, 9.0870$, and if you desaturate by 10%, it is $57.8872, 4.1738, 5.5800$.

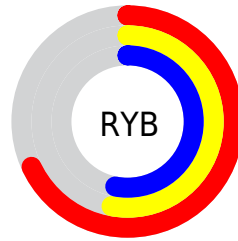
Distribution



Red (68%)

Green (53%)

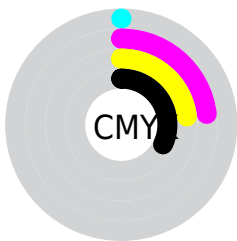
Blue (53%)



Red (68%)

Yellow (53%)

Blue (53%)

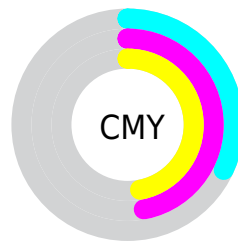


Cyan (0%)

Magenta (23%)

Yellow (23%)

Black (32%)



Cyan (32%)

Magenta (47%)

Yellow (47%)

Brightness & Saturation Gradients

These gradients show how the HunterLab color 52.6973, 10.3588, 7.2773 changes by changing the brightness by 10 percent. The first figure shows a shift by +10% for each color and the second figure -10%.

Similar to the brightness gradients but the following saturation gradients show a change of the HunterLab color 52.6973, 10.3588, 7.2773 by changing the saturation by 10% instead.

■ 52.6973, 10.3588,
7.2773

■ 52.6973, 10.3588,
7.2773

170.6964, 9.8870,
15.9800

■ 42.6068, 10.0813,
6.3986

■ 74.9127, 10.6665,
9.0836

■ 33.2568, 9.7099,
5.5306

■ 86.9585, 10.7172,
10.0125

■ 24.7130, 9.2265,
4.6689

■ 99.5885, 10.7069,
10.9597

■ 17.0600, 8.6087,
3.8034

112.7770, 10.6405,
11.9258

■ 10.4171, 7.8260,
2.9977

126.5011, 10.5221,
12.9108

0.0000, INF, NaN

0.0000, NaN, NaN

140.7408, 10.3551,

13.9149

0.0000, NaN, NaN

155.4780, 10.1426,
14.9380

0.0000, NaN, NaN

■ 52.6973, 10.3588,
7.2773

■ 52.6973, 10.3588,
7.2773

■ 47.8587, 16.7952,
9.0870

■ 57.8872, 4.1738,
5.5800

■ 43.4354, 23.4343,
10.9930

■ 63.3703, -1.7494,
3.9902

■ 39.5103, 30.1311,
12.9542

■ 69.1047, -7.4319,
2.4991

■ 36.1755, 36.6077,
14.8839

■ 75.0562, -12.9025,
1.0946

■ 33.5230, 42.4282,
16.6429

■ 81.1977, -18.1918,
-0.2354

■ 31.6220, 47.0553,
18.0559

■ 87.5072, -23.3286,
-1.5023

■ 30.4859, 50.0361,
18.9722

■ 93.6689, -28.1135,
-2.6580

■ 29.9984, 51.3704,
19.3842

Harmonies

Analogous

The Analogous color harmony consists of three colors that are next to each other on the color wheel.



52.6985, 11.1715, 0.8465



52.6973, 10.3588, 7.2773



52.6985, 5.9178, 11.9021

Triad

The Triadic color harmony groups three colors that are evenly spaced from another and form a triangle on the color wheel.



52.6985, 10.3569, 7.2782



52.6985, -12.8980, 10.3006



52.6985, -4.8834, -11.4338

Complementary

The Complementary color scheme is a pair of colors which are on the opposite of each other on the color wheel.



52.6973, 10.3588, 7.2773



61.9640, -14.5054, -0.3885

Split Complementary

Split-complementary colors differ from the complementary color scheme. The scheme consists of three colors, the original color and two neighbors of the complement color.



52.6985, -11.0132, -8.1156



52.6973, 10.3588, 7.2773



52.6985, -15.4791, 4.8135

Square

The Square scheme is like the rectangle color scheme, but the four colors are evenly spaced on the color wheel.



52.6985, 10.3569, 7.2782



52.6985, -7.5791, 13.4820



52.6985, -14.8075, -1.9585



52.6985, 2.1252, -10.5482

Rectangle

The Rectangle color scheme consists of four colors that form a rectangle on the color wheel.



52.6973, 10.3588, 7.2773



52.6985, 1.6219, 13.6130



52.6985, -14.8075, -1.9585



52.6985, -7.1092, -10.7587

Sweetspot

The Sweet Spot groups the original color and five complimentary colors.



52.6985, 10.3569, 7.2782



82.2495, 0.9020, 6.2426



53.9492, 16.8292, -10.4710



38.5738, 0.6425, 3.0013



94.3401, -5.0338, 5.1257



41.3092, -2.2042, 2.2444

Same Dimension

The Same Dimension uses a secret algorithm to generate beautiful new colors.



52.6985, 10.3569, 7.2782



67.3213, 18.6848, 11.1262



58.1647, 0.4495, 12.8578



28.3116, 0.9270, 2.3555



25.5481, 43.7492, 16.5086



4.2616, 7.2956, 2.7537

Inverse Universe

The Inverse Universe completely reimagines the original color for something new.



61.9640, -14.5054, -0.3885



82.6320, -22.5573, -1.5958



55.8890, -5.0973, -8.1321



30.1197, -3.8984, 0.8682



49.1621, -26.0607, -5.1908



8.2000, -4.3469, -0.8655

Previews

White Background



This preview shows how the HunterLab color 52.6973, 10.3588, 7.2773 looks on a white background.

Color Contrast Check

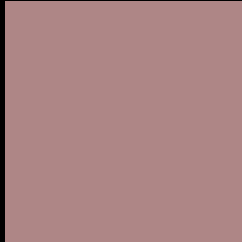
Large Text (above 18pt) WCAG AA ✓ Pass

Any Text WCAG AA × Fail

Large Text (above 18pt) WCAG AAA × Fail

Any Text WCAG AAA × Fail

Black Background



This preview shows how the HunterLab color 52.6973, 10.3588, 7.2773 looks on a black background.

Color Contrast Check

Large Text (above 18pt) WCAG AA ✓ Pass

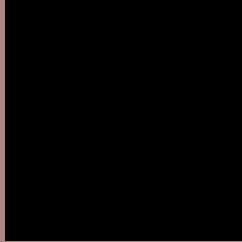
Any Text WCAG AA ✓ Pass

Large Text (above 18pt) WCAG AAA ✓ Pass

Any Text WCAG AAA × Fail

If you want to check with other color combinations, try the [Color Contrast Checker](#).

HunterLab 52.6973, 10.3588, 7.2773 Background



This preview shows how black text looks on a background with the HunterLab color 52.6973, 10.3588, 7.2773.



This preview shows how white text looks on a background with the HunterLab color 52.6973, 10.3588, 7.2773.

Color Blindness Simulation

Color vision deficiency is a very complex topic, and I could not describe the different causes any better than Wikipedia does, so if you want to learn more, you should check out their [article about color blindness](#).

Dichromacy



Original Color

52.6973, 10.3588, 7.2773

Protanopia

52.7304, -1.9103, 4.9941

Deuteranopia

52.7637, 3.6278, 7.6412



Tritanopia

52.7941, 12.5065, 3.5664

Trichromacy



Original Color

52.6973, 10.3588, 7.2773

Protanomaly

52.6597, 2.0724, 5.8381

Deuteranomaly

52.6230, 5.9578, 7.5286

Tritanomaly

52.7091, 12.0649, 4.7816

Monochromacy



Original Color

52.6973, 10.3588, 7.2773

Achromatopsia

53.6135, -2.8607, 2.9129

Achromatomaly

53.2606, 1.5252, 4.3574

CSS Examples

Text

The CSS property to change the color of the text to HunterLab 52.6973, 10.3588, 7.2773 is called "color". The color property can be set on classes, ids or directly on the HTML element.

This example shows how text in the color `rgb(174, 134, 134)` looks like.

```
.text, #text, p{  
    color:rgb(174, 134, 134)  
}
```

If you want to add a text shadow in that color use the text-shadow property, you can generate a text shadow directly with our [CSS Text Shadow Generator](#).

Here you see how black text with a 4 pixel rgb(174, 134, 134) colored shadow looks like.

```
.shadow{ text-shadow: 4px 4px 2px rgb(174, 134, 134) }
```

Border

The CSS property to change the border of an element to HunterLab 52.6973, 10.3588, 7.2773 is called "border". The border property can be set on classes, ids or directly on the HTML element.

This example shows the color as border, it can be applied via the CSS property "border" or "border-color".

```
.border, #border, table{ border:4px solid rgb(174, 134, 134) }
```


If only the border color should be changed use the property `border-color`.

```
.border{ border-color:rgb(174, 134, 134) }
```

If you want to add a box shadow in that color use:

Here you see how a box with a 4 pixel `rgb(174, 134, 134)` colored shadow looks like.

```
.boxshadow{ -moz-box-shadow:4px 4px 4px  
4px rgb(174, 134, 134); -webkit-box-  
shadow:4px 4px 4px 4px rgb(174, 134, 134);  
box-shadow:4px 4px 4px 4px rgb(174, 134,  
134) }
```

Background

The CSS property to change the background color of an element to HunterLab 52.6973, 10.3588, 7.2773 is called "background". The background property can be set on classes, ids or directly on the HTML element.

```
.background, #background, body{  
background: rgb(174, 134, 134) }
```

If only the background color should be changed can be used:

```
.background{ background-color: rgb(174,  
134, 134) }
```

This example shows the color as background, it is applied via the CSS property "background".

To optimize and compress your CSS code, you can use our [online CSS compressor and optimizer](#) based on csstidy. If you want to create a linear or radial gradient as background or border, check our [CSS Gradient Generator](#).

Hey! You found this booklet interesting? Support Converting Colors with the new Membership Option!

The pro membership hides all ads, plus gives you double the colors in the color bucket, and more awesome pro features!

[Learn more, Memberships starting at \\$2.50/m!](#)

**Follow me
on Twitter!**

@ConvertingColor