

Converting Colors

HunterLab(52.6929, 11.8089,
10.2062)

Have a look what the booklet for
HunterLab(52.6929, 11.8089,
10.2062) contains.

HunterLab(52.8120, 11.7098, 10.2059)	3
<i>Conversions</i>	4
<i>Details</i>	6
<i>Harmonies</i>	12
<i>Previews</i>	24
<i>Color Blindness Simulation</i>	28
<i>CSS Examples</i>	31

Color

**HunterLab(52.8120, 11.7098,
10.2059)**

Conversions

Conversions Part 1

Format	Color
Hex	B3857F
RGB	179, 133, 127
RGB Percent	70%, 52%, 50%
CMY	0.2980, 0.4784, 0.5020
CMYK	0.00, 0.26, 0.29, 0.30
HSL	7°, 25%, 60%
HSV	7°, 29%, 70%
XYZ	30.8087, 27.8911, 23.8384
YIQ	146.0700, 29.3420, 7.8860

Conversions

Conversions Part 2

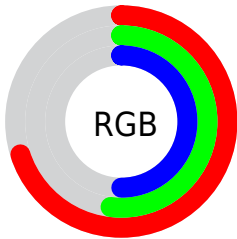
Format	Color
R_{YB}	179, 134, 127
Decimal	11765119
CIE _{Lab}	59.79, 16.78, 10.13
CIE _{LCh}	60, 19.602, 31.125
Yxy	27.8924, 0.3733, 0.3379
Android (android.graphics.Color)	4289955199 (0xFFB3857F)
YUV	146.0700, -9.4015, 28.8796
Hunter-Lab	52.8120, 11.7098, 10.2059

Details

The HunterLab color **52.8120, 11.7098, 10.2059** is a dark color, and the websafe version is hex **CC9999**. A complement of this color would be **61.3618, -14.7840, -3.6559**, and the grayscale version is **53.6710, -2.8637, 2.9160**.

A 20% lighter version of the original color is **74.9973, 12.4861, 12.2951**, and **33.3115, 10.9683, 7.8896** is the 20% darker color. If you saturate the color by 10%, you get **48.4278, 17.4888, 12.3991**, and if you desaturate by 10%, it is **57.5054, 6.1933, 7.9647**.

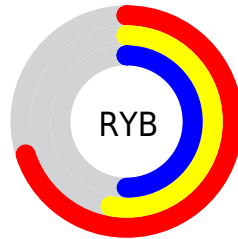
Distribution



Red (70%)

Green (52%)

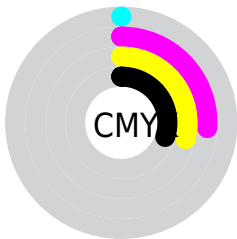
Blue (50%)



Red (70%)

Yellow (53%)

Blue (50%)

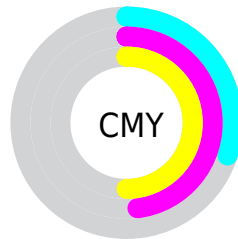


Cyan (0%)

Magenta (26%)

Yellow (29%)

Black (30%)



Cyan (30%)

Magenta (48%)

Yellow (50%)

Brightness & Saturation Gradients

These gradients show how the HunterLab color 52.8120, 11.7098, 10.2059 changes by changing the brightness by 10 percent. The first figure shows a shift by +10% for each color and the second figure -10%.

Similar to the brightness gradients but the following saturation gradients show a change of the HunterLab color 52.8120, 11.7098, 10.2059 by changing the saturation by 10% instead.

■ 52.8120, 11.7098,
10.2059

■ 52.8120, 11.7098,
10.2059

170.8661, 11.7781,
20.6199

■ 42.7136, 11.3589,
9.0740

■ 75.0417, 12.1537,
12.4652

■ 33.3552, 10.9105,
7.9287

■ 87.0940, 12.2683,
13.6000

■ 24.8021, 10.3457,
6.7574

■ 99.7304, 12.3196,
14.7425

■ 17.1388, 9.6422,
5.5372

112.9248, 12.3125,
15.8944

■ 10.4840, 8.7713,
4.6703

126.6547, 12.2514,
17.0573

0.0000, INF, NaN

0.0000, NaN, NaN

140.8999, 12.1399,

18.2320

0.0000, NaN, NaN

155.6425, 11.9813,
19.4194

0.0000, NaN, NaN

■ 52.8120, 11.7098,
10.2059

■ 52.8120, 11.7098,
10.2059

■ 48.4278, 17.4888,
12.3991

■ 57.5054, 6.1933,
7.9647

■ 44.4023, 23.4972,
14.4949

■ 62.4603, 0.9476,
5.7013

■ 40.7989, 29.6298,
16.4224

■ 67.6420, -4.0470,
3.4323

■ 37.6864, 35.6898,
18.0810

■ 73.0215, -8.8161,
1.1659

■ 35.1336, 41.3676,
19.3496

■ 78.5751, -13.3880,
-1.0944

■ 33.1954, 46.2616,
20.1156

■ 84.2834, -17.7895,
-3.3479

■ 31.8870, 49.9416,
20.4321

■ 90.1307, -22.0454,
-5.5951

■ 31.7929, 50.2093,
20.4696

■ 93.9807, -26.9542,
-2.2470

Harmonies

Analogous

The Analogous color harmony consists of three colors that are next to each other on the color wheel.



52.8132, 14.2920, 3.1752



52.8120, 11.7098, 10.2059



52.8132, 5.1957, 14.6229

Triad

The Triadic color harmony groups three colors that are evenly spaced from another and form a triangle on the color wheel.



52.8132, 11.7077, 10.2068



52.8132, -16.2156, 9.7602



52.8132, -2.5037, -14.8812

Complementary

The Complementary color scheme is a pair of colors which are on the opposite of each other on the color wheel.



52.8120, 11.7098, 10.2059



61.3618, -14.7840, -3.6559

Split Complementary

Split-complementary colors differ from the complementary color scheme. The scheme consists of three colors, the original color and two neighbors of the complement color.



52.8132, -10.3860, -12.4031



52.8120, 11.7098, 10.2059



52.8132, -17.9988, 2.5726

Square

The Square scheme is like the rectangle color scheme, but the four colors are evenly spaced on the color wheel.



52.8132, 11.7077, 10.2068



52.8132, -10.9022, 14.3947



52.8132, -15.9309, -5.6872



52.8132, 5.7778, -12.0184

Rectangle

The Rectangle color scheme consists of four colors that form a rectangle on the color wheel.



52.8120, 11.7098, 10.2059



52.8132, -0.3094, 15.8985



52.8132, -15.9309, -5.6872



52.8132, -5.2862, -14.6426

Sweetspot

The Sweet Spot groups the original color and five complimentary colors.



52.8132, 11.7077, 10.2068



83.5193, 1.3382, 7.6609



52.7361, 22.1190, -12.0234



38.8523, 1.0968, 3.8120



95.4677, -5.0939, 5.1869



42.2927, -2.2566, 2.2978

Same Dimension

The Same Dimension uses a secret algorithm to generate beautiful new colors.



52.8132, 11.7077, 10.2068



66.7887, 20.6905, 15.5894



59.6978, -0.7687, 16.8302



29.4246, 0.5125, 2.7206



26.8218, 41.8915, 17.2609



5.2630, 5.8923, 3.3462

Inverse Universe

The Inverse Universe completely reimagines the original color for something new.



61.3618, -14.7840, -3.6559



80.6184, -22.3946, -6.8892



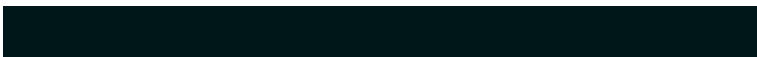
53.7440, -2.8890, -13.9827



30.7582, -3.5861, 0.5658



44.4091, -19.5922, -13.2137



8.1711, -3.8450, -1.9128

Previews

White Background



This preview shows how the HunterLab color 52.8120, 11.7098, 10.2059 looks on a white background.

Color Contrast Check

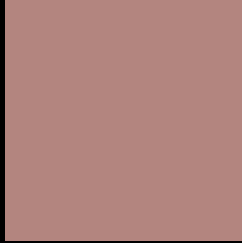
Large Text (above 18pt) WCAG AA ✓ Pass

Any Text WCAG AA × Fail

Large Text (above 18pt) WCAG AAA × Fail

Any Text WCAG AAA × Fail

Black Background



This preview shows how the HunterLab color 52.8120, 11.7098, 10.2059 looks on a black background.

Color Contrast Check

Large Text (above 18pt) WCAG AA ✓ Pass

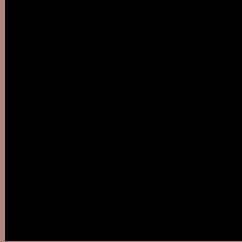
Any Text WCAG AA ✓ Pass

Large Text (above 18pt) WCAG AAA ✓ Pass

Any Text WCAG AAA × Fail

If you want to check with other color combinations, try the [Color Contrast Checker](#).

HunterLab 52.8120, 11.7098, 10.2059 Background



This preview shows how black text looks on a background with the HunterLab color 52.8120, 11.7098, 10.2059.



This preview shows how white text looks on a background with the HunterLab color 52.8120, 11.7098,

Color Blindness Simulation

Color vision deficiency is a very complex topic, and I could not describe the different causes any better than Wikipedia does, so if you want to learn more, you should check out their [article about color blindness](#).

Dichromacy



Original Color

52.8120, 11.7098, 10.2059

Protanopia

53.0321, -2.6522, 7.8229

Deuteranopia

52.8875, 3.6893, 10.5255



Tritanopia

52.7816, 14.9941, 4.4797

Trichromacy



Original Color

52.8120, 11.7098, 10.2059

Protanomaly

52.8885, 2.5289, 8.5622

Deuteranomaly

52.8618, 6.3932, 10.5462

Tritanomaly

52.8993, 13.7770, 6.7310

Monochromacy



Original Color

52.8120, 11.7098, 10.2059

Achromatopsia

53.6135, -2.8607, 2.9129

Achromatomaly

53.0876, 2.2034, 5.4710

CSS Examples

Text

The CSS property to change the color of the text to HunterLab 52.8120, 11.7098, 10.2059 is called "color". The color property can be set on classes, ids or directly on the HTML element.

This example shows how text in the color `rgb(179, 133, 127)` looks like.

```
.text, #text, p{  
    color:rgb(179, 133, 127)  
}
```

If you want to add a text shadow in that color use the text-shadow property, you can generate a text shadow directly with our [CSS Text Shadow Generator](#).

Here you see how black text with a 4 pixel rgb(179, 133, 127) colored shadow looks like.

```
.shadow{ text-shadow: 4px 4px 2px rgb(179, 133, 127) }
```

Border

The CSS property to change the border of an element to HunterLab 52.8120, 11.7098, 10.2059 is called "border". The border property can be set on classes, ids or directly on the HTML element.

This example shows the color as border, it can be applied via the CSS property "border" or "border-color".

```
.border, #border, table{ border:4px solid rgb(179, 133, 127) }
```


If only the border color should be changed use the property `border-color`.

```
.border{ border-color:rgb(179, 133, 127) }
```

If you want to add a box shadow in that color use:

Here you see how a box with a 4 pixel `rgb(179, 133, 127)` colored shadow looks like.

```
.boxshadow{ -moz-box-shadow:4px 4px 4px  
4px rgb(179, 133, 127); -webkit-box-  
shadow:4px 4px 4px 4px rgb(179, 133, 127);  
box-shadow:4px 4px 4px 4px rgb(179, 133,  
127) }
```

Background

The CSS property to change the background color of an element to HunterLab 52.8120, 11.7098, 10.2059 is called "background". The background property can be set on classes, ids or directly on the HTML element.

```
.background, #background, body{  
background: rgb(179, 133, 127) }
```

If only the background color should be changed can be used:

```
.background{ background-color: rgb(179,  
133, 127) }
```

This example shows the color as background, it is applied via the CSS property "background".

To optimize and compress your CSS code, you can use our [online CSS compressor and optimizer](#) based on csstidy. If you want to create a linear or radial gradient as background or border, check our [CSS Gradient Generator](#).

Hey! You found this booklet interesting? Support Converting Colors with the new Membership Option!

The pro membership hides all ads, plus gives you double the colors in the color bucket, and more awesome pro features!

[Learn more, Memberships starting at \\$2.50/m!](#)

**Follow me
on Twitter!**

@ConvertingColor