

Converting Colors

HunterLab(52.7462, 7.3978,
20.9908)

Have a look what the booklet for
HunterLab(52.7462, 7.3978,
20.9908) contains.

HunterLab(52.7461, 7.3981, 20.9907)	3
<i>Conversions</i>	4
<i>Details</i>	6
<i>Harmonies</i>	12
<i>Previews</i>	24
<i>Color Blindness Simulation</i>	28
<i>CSS Examples</i>	31

Color

**HunterLab(52.7461, 7.3981,
20.9907)**

Conversions

Conversions Part 1

Format	Color
Hex	B4875D
RGB	180, 135, 93
RGB Percent	71%, 53%, 36%
CMY	0.2941, 0.4706, 0.6353
CMYK	0.00, 0.25, 0.48, 0.29
HSL	29°, 37%, 54%
HSV	29°, 48%, 71%
XYZ	29.4621, 27.8215, 14.1732
YIQ	143.6670, 40.3020, -3.5220

Conversions

Conversions Part 2

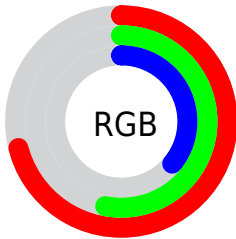
Format	Color
R_{YB}	180, 174, 93
Decimal	11831133
CIE _{Lab}	59.73, 11.97, 29.21
CIE _{LCh}	60, 31.564, 67.708
Yxy	27.8229, 0.4123, 0.3894
Android (android.graphics.Color)	4290021213 (0xFFB4875D)
YUV	143.6670, -24.9788, 31.8640
Hunter-Lab	52.7461, 7.3981, 20.9907

Details

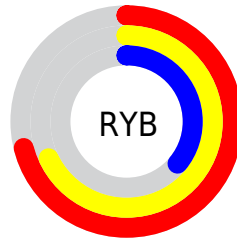
The HunterLab color $52.7461, 7.3981, 20.9907$ is a dark color, and the websafe version is hex $CC9966$. A complement of this color would be $48.7836, -5.4567, -22.5146$, and the grayscale version is $52.7635, -2.8153, 2.8667$.

A 20% lighter version of the original color is $74.9381, 7.6725, 25.4349$, and $33.2479, 7.3101, 16.0058$ is the 20% darker color. If you saturate the color by 10%, you get $50.0551, 10.5214, 23.1429$, and if you desaturate by 10%, it is $55.5813, 4.5779, 18.2863$.

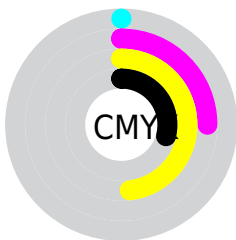
Distribution



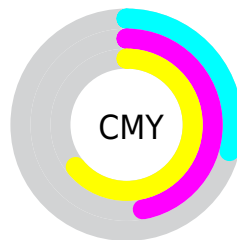
- Red (71%)
- Green (53%)
- Blue (36%)



- Red (71%)
- Yellow (68%)
- Blue (36%)



- Cyan (0%)
- Magenta (25%)
- Yellow (48%)
- Black (29%)



- Cyan (29%)
- Magenta (47%)
- Yellow (64%)

Brightness & Saturation Gradients

These gradients show how the HunterLab color 52.7461, 7.3981, 20.9907 changes by changing the brightness by 10 percent. The first figure shows a shift by +10% for each color and the second figure -10%.

Similar to the brightness gradients but the following saturation gradients show a change of the HunterLab color 52.7461, 7.3981, 20.9907 by changing the saturation by 10% instead.

■ 52.7461, 7.3981,
20.9907

■ 52.7461, 7.3981,
20.9907

170.7687, 5.6924,
39.7614

■ 42.6523, 7.2893,
18.5949

■ 74.9677, 7.3920,
25.4939

■ 33.2987, 7.0971,
16.0600

■ 87.0162, 7.2964,
27.6415

■ 24.7509, 6.8045,
13.3384

■ 99.6489, 7.1456,
29.7389

■ 17.0936, 6.3905,
10.7992

■ 112.8400, 6.9440,
31.7963

■ 10.4455, 5.8239,
7.3119

126.5665, 6.6951,
33.8216

0.0000, INF, NaN

0.0000, NaN, NaN

140.8086, 6.4018,

35.8210

0.0000, NaN, NaN

155.5481, 6.0668,
37.7996

0.0000, NaN, NaN

■ 52.7461, 7.3981,
20.9907

■ 52.7461, 7.3981,
20.9907

■ 50.0551, 10.5214,
23.1429

■ 55.5813, 4.5779,
18.2863

■ 47.5169, 13.9554,
24.6938

■ 58.5452, 2.0582,
15.0778

■ 45.1454, 17.6849,
25.6070

■ 61.6283, -0.1785,
11.4151

■ 42.9525, 21.6769,
25.8672

■ 64.8208, -2.1502,
7.3441

■ 40.9446, 25.8532,
25.5577

■ 68.1138, -3.8763,
2.9068

■ 40.6254, 26.5480,
25.4980

■ 71.4994, -5.3763,
-1.8595

■ 74.9704, -6.6690,
-6.9217

■ 78.5206, -7.7720,
-12.2510

■ 82.1442, -8.7021,
-17.8214

Harmonies

Analogous

The Analogous color harmony consists of three colors that are next to each other on the color wheel.



52.7474, 19.3325, 15.8529



52.7461, 7.3981, 20.9907



52.7474, -6.2545, 21.9493

Triad

The Triadic color harmony groups three colors that are evenly spaced from another and form a triangle on the color wheel.



52.7474, 7.3958, 20.9914



52.7474, -26.1571, -0.5499



52.7474, 14.0192, -20.6414

Complementary

The Complementary color scheme is a pair of colors which are on the opposite of each other on the color wheel.



52.7461, 7.3981, 20.9907



48.7836, -5.4567, -22.5146

Split Complementary

Split-complementary colors differ from the complementary color scheme. The scheme consists of three colors, the original color and two neighbors of the complement color.



52.7474, 0.7103, -27.9324



52.7461, 7.3981, 20.9907



52.7474, -21.8246, -14.5774

Square

The Square scheme is like the rectangle color scheme, but the four colors are evenly spaced on the color wheel.



52.7474, 7.3958, 20.9914



52.7474, -24.7529, 11.4060



52.7474, -12.3080, -25.4713



52.7474, 23.4167, -7.3817

Rectangle

The Rectangle color scheme consists of four colors that form a rectangle on the color wheel.



52.7461, 7.3981, 20.9907



52.7474, -14.3538, 20.3895



52.7474, -12.3080, -25.4713



52.7474, 9.8047, -24.0059

Sweetspot

The Sweet Spot groups the original color and five complimentary colors.



52.7474, 7.3958, 20.9914



84.7286, -1.3687, 13.1905



44.0545, 34.0304, -5.3383



38.9681, -0.3670, 6.6646



95.4677, -5.0939, 5.1869



42.2927, -2.2566, 2.2978

Same Dimension

The Same Dimension uses a secret algorithm to generate beautiful new colors.



52.7474, 7.3958, 20.9914



67.1700, 14.4601, 31.3267



64.7899, -12.7124, 30.2235



30.2651, -0.9232, 3.6416



34.1357, 21.7165, 21.4144



6.9545, 1.9111, 4.3188

Inverse Universe

The Inverse Universe completely reimagines the original color for something new.



48.7836, -5.4567, -22.5146



60.7801, -5.9183, -39.0263



37.3768, 15.4258, -45.1938



29.8879, -2.1761, -0.4795



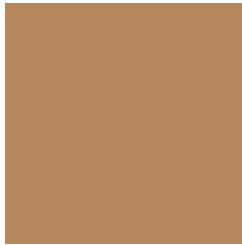
28.1260, 5.0744, -46.1092



6.0420, -0.9052, -5.5979

Previews

White Background



This preview shows how the HunterLab color 52.7461, 7.3981, 20.9907 looks on a white background.

Color Contrast Check

Large Text (above 18pt) WCAG AA ✓ Pass

Any Text WCAG AA × Fail

Large Text (above 18pt) WCAG AAA × Fail

Any Text WCAG AAA × Fail

Black Background



This preview shows how the HunterLab color 52.7461, 7.3981, 20.9907 looks on a black background.

Color Contrast Check

Large Text (above 18pt) WCAG AA ✓ Pass

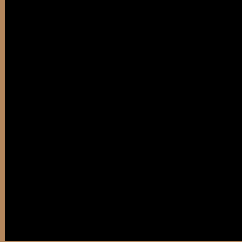
Any Text WCAG AA ✓ Pass

Large Text (above 18pt) WCAG AAA ✓ Pass

Any Text WCAG AAA × Fail

If you want to check with other color combinations, try the [Color Contrast Checker](#).

HunterLab 52.7461, 7.3981, 20.9907 Background



This preview shows how black text looks on a background with the HunterLab color 52.7461, 7.3981, 20.9907.



This preview shows how white text looks on a background with the HunterLab color 52.7461, 7.3981,

Color Blindness Simulation

Color vision deficiency is a very complex topic, and I could not describe the different causes any better than Wikipedia does, so if you want to learn more, you should check out their [article about color blindness](#).

Dichromacy



Original Color

52.7461, 7.3981, 20.9907

Protanopia

52.7992, -5.0361, 19.7469

Deuteranopia

52.8662, 3.6313, 21.2839



Tritanopia

52.6830, 17.1676, 5.2741

Trichromacy



Original Color

52.7461, 7.3981, 20.9907

Protanomaly

52.8144, -0.6538, 20.1094

Deuteranomaly

52.8149, 4.8490, 21.2626

Tritanomaly

52.6356, 13.5508, 11.9309

Monochromacy



Original Color

52.7461, 7.3981, 20.9907

Achromatopsia

52.8104, -2.8178, 2.8693

Achromatomaly

52.6294, -0.0822, 10.5710

CSS Examples

Text

The CSS property to change the color of the text to HunterLab 52.7461, 7.3981, 20.9907 is called "color". The color property can be set on classes, ids or directly on the HTML element.

This example shows how text in the color `rgb(180, 135, 93)` looks like.

```
.text, #text, p{  
    color:rgb(180, 135, 93)  
}
```

If you want to add a text shadow in that color use the text-shadow property, you can generate a text shadow directly with our [CSS Text Shadow Generator](#).

Here you see how black text with a 4 pixel rgb(180, 135, 93) colored shadow looks like.

```
.shadow{ text-shadow: 4px 4px 2px rgb(180, 135, 93) }
```

Border

The CSS property to change the border of an element to HunterLab 52.7461, 7.3981, 20.9907 is called "border". The border property can be set on classes, ids or directly on the HTML element.

This example shows the color as border, it can be applied via the CSS property "border" or "border-color".

```
.border, #border, table{ border:4px solid rgb(180, 135, 93) }
```


If only the border color should be changed use the property `border-color`.

```
.border{ border-color:rgb(180, 135, 93) }
```

If you want to add a box shadow in that color use:

Here you see how a box with a 4 pixel `rgb(180, 135, 93)` colored shadow looks like.

```
.boxshadow{ -moz-box-shadow:4px 4px 4px  
4px rgb(180, 135, 93); -webkit-box-  
shadow:4px 4px 4px 4px rgb(180, 135, 93);  
box-shadow:4px 4px 4px 4px rgb(180, 135,  
93) }
```

Background

The CSS property to change the background color of an element to HunterLab 52.7461, 7.3981, 20.9907 is called "background". The background property can be set on classes, ids or directly on the HTML element.

```
.background, #background, body{  
background: rgb(180, 135, 93) }
```

If only the background color should be changed can be used:

```
.background{ background-color: rgb(180,  
135, 93) }
```

This example shows the color as background, it is applied via the CSS property "background".

To optimize and compress your CSS code, you can use our [online CSS compressor and optimizer](#) based on csstidy. If you want to create a linear or radial gradient as background or border, check our [CSS Gradient Generator](#).

Hey! You found this booklet interesting? Support Converting Colors with the new Membership Option!

The pro membership hides all ads, plus gives you double the colors in the color bucket, and more awesome pro features!

[Learn more, Memberships starting at \\$2.50/m!](#)

**Follow me
on Twitter!**

@ConvertingColor