

Converting Colors

HunterLab(52.7507, 6.6421,
16.3595)

Have a look what the booklet for
HunterLab(52.7507, 6.6421,
16.3595) contains.

HunterLab(52.7507, 6.6421, 16.3595)	3
<i>Conversions</i>	4
<i>Details</i>	6
<i>Harmonies</i>	12
<i>Previews</i>	24
<i>Color Blindness Simulation</i>	28
<i>CSS Examples</i>	31

Color

**HunterLab(52.7507, 6.6421,
16.3595)**

Conversions

Conversions Part 1

Format	Color
Hex	AF886D
RGB	175, 136, 109
RGB Percent	69%, 53%, 43%
CMY	0.3137, 0.4666, 0.5725
CMYK	0.00, 0.22, 0.38, 0.31
HSL	25°, 29%, 56%
HSV	25°, 38%, 69%
XYZ	29.2436, 27.8264, 18.2977
YIQ	144.5830, 31.9110, -0.1290

Conversions

Conversions Part 2

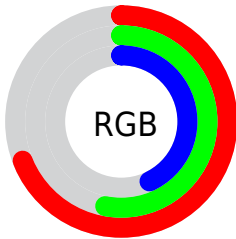
Format	Color
R _Y B	175, 155, 109
Decimal	11503725
CIE Lab	59.73, 11.12, 20.20
CIE LCh	60, 23.061, 61.183
Yxy	27.8277, 0.3880, 0.3692
Android (android.graphics.Color)	4289693805 (0xFFAF886D)
YUV	144.5830, -17.5424, 26.6757
Hunter-Lab	52.7507, 6.6421, 16.3595

Details

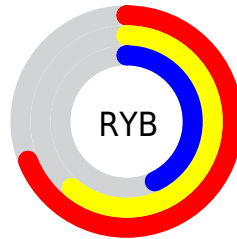
The HunterLab color $52.7507, 6.6421, 16.3595$ is a dark color, and the websafe version is hex $CC9966$. A complement of this color would be $52.4644, -8.0002, -13.6456$, and the grayscale version is $53.1044, -2.8335, 2.8853$.

A 20% lighter version of the original color is $74.9161, 6.8754, 19.5981$, and $33.2527, 6.5200, 12.7325$ is the 20% darker color. If you saturate the color by 10%, you get $49.7132, 9.9740, 18.8678$, and if you desaturate by 10%, it is $55.9441, 3.5922, 13.4360$.

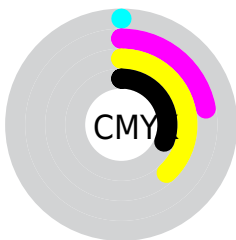
Distribution



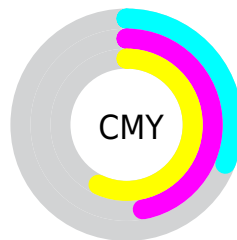
- Red (69%)
- Green (53%)
- Blue (43%)



- Red (69%)
- Yellow (61%)
- Blue (43%)



- Cyan (0%)
- Magenta (22%)
- Yellow (38%)
- Black (31%)



- Cyan (31%)
- Magenta (47%)
- Yellow (57%)

Brightness & Saturation Gradients

These gradients show how the HunterLab color 52.7507, 6.6421, 16.3595 changes by changing the brightness by 10 percent. The first figure shows a shift by +10% for each color and the second figure -10%.

Similar to the brightness gradients but the following saturation gradients show a change of the HunterLab color 52.7507, 6.6421, 16.3595 by changing the saturation by 10% instead.

■ 52.7507, 6.6421,
16.3595

■ 52.7507, 6.6421,
16.3595

170.7755, 4.6152,
31.0675

■ 42.6565, 6.5779,
14.5804

■ 74.9728, 6.5543,
19.7681

■ 33.3026, 6.4328,
12.7227

■ 87.0216, 6.4205,
21.4224

■ 24.7545, 6.1907,
10.7533

■ 99.6546, 6.2332,
23.0552

■ 17.0967, 5.8310,
8.6177

■ 112.8458, 5.9963,
24.6726

■ 10.4482, 5.3232,
7.3137

126.5727, 5.7134,
26.2792

0.0000, INF, NaN

0.0000, NaN, NaN

140.8149, 5.3873,

27.8787

0.0000, NaN, NaN

155.5546, 5.0205,
29.4740

0.0000, NaN, NaN

■ 52.7507, 6.6421,
16.3595

■ 52.7507, 6.6421,
16.3595

■ 49.7132, 9.9740,
18.8678

■ 55.9441, 3.5922,
13.4360

■ 46.8445, 13.6008,
20.9034

■ 59.2746, 0.8161,
10.1462

■ 44.1638, 17.5143,
22.4107

■ 62.7305, -1.7071,
6.5360

■ 41.6906, 21.6881,
23.3393

■ 66.3000, -3.9979,
2.6447

■ 39.4437, 26.0677,
23.6580

■ 69.9731, -6.0769,
-1.4943

■ 37.4374, 30.5471,
23.4216

■ 73.7409, -7.9639,
-5.8523

■ 37.0098, 31.5531,
23.3577

■ 77.5957, -9.6775,
-10.4054

■ 81.5307, -11.2345,
-15.1330

■ 85.0927, -15.1495,
-13.7512

Harmonies

Analogous

The Analogous color harmony consists of three colors that are next to each other on the color wheel.



52.7519, 14.4101, 11.3855



52.7507, 6.6421, 16.3595



52.7519, -3.2085, 17.9131

Triad

The Triadic color harmony groups three colors that are evenly spaced from another and form a triangle on the color wheel.



52.7519, 6.6400, 16.3602



52.7519, -20.4732, 2.4976



52.7519, 7.3669, -15.0148

Complementary

The Complementary color scheme is a pair of colors which are on the opposite of each other on the color wheel.



52.7507, 6.6421, 16.3595



52.4644, -8.0002, -13.6456

Split Complementary

Split-complementary colors differ from the complementary color scheme. The scheme consists of three colors, the original color and two neighbors of the complement color.



52.7519, -2.4254, -18.5408



52.7507, 6.6421, 16.3595



52.7519, -18.0837, -7.3512

Square

The Square scheme is like the rectangle color scheme, but the four colors are evenly spaced on the color wheel.



52.7519, 6.6400, 16.3602



52.7519, -18.4288, 10.8492



52.7519, -11.6524, -15.5099



52.7519, 14.8510, -6.5871

Rectangle

The Rectangle color scheme consists of four colors that form a rectangle on the color wheel.



52.7507, 6.6421, 16.3595



52.7519, -9.4979, 17.0771



52.7519, -11.6524, -15.5099



52.7519, 4.2127, -16.8754

Sweetspot

The Sweet Spot groups the original color and five complimentary colors.



52.7519, 6.6400, 16.3602



82.3245, -1.1473, 10.4717



47.1261, 25.6341, -6.0752



38.5223, -0.3322, 5.2404



94.3401, -5.0338, 5.1257



41.3092, -2.2042, 2.2444

Same Dimension

The Same Dimension uses a secret algorithm to generate beautiful new colors.



52.7519, 6.6400, 16.3602



67.3000, 12.4535, 24.6474



61.9446, -8.9410, 24.1651



29.2119, -0.6218, 3.3487



31.5024, 26.2337, 19.8709



6.2081, 2.1931, 3.8638

Inverse Universe

The Inverse Universe completely reimagines the original color for something new.



52.4644, -8.0002, -13.6456



66.8257, -10.9728, -23.4602



43.2960, 7.6944, -28.7263



29.1789, -2.3845, -0.2532



30.5673, -0.3242, -37.5066



6.0335, -1.5253, -4.2488

Previews

White Background



This preview shows how the HunterLab color 52.7507, 6.6421, 16.3595 looks on a white background.

Color Contrast Check

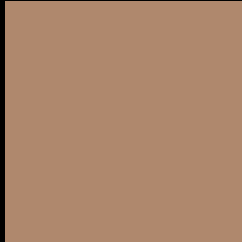
Large Text (above 18pt) WCAG AA ✓ Pass

Any Text WCAG AA × Fail

Large Text (above 18pt) WCAG AAA × Fail

Any Text WCAG AAA × Fail

Black Background



This preview shows how the HunterLab color 52.7507, 6.6421, 16.3595 looks on a black background.

Color Contrast Check

Large Text (above 18pt) WCAG AA ✓ Pass

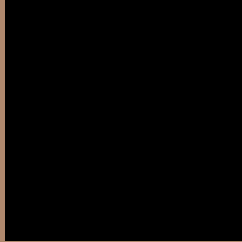
Any Text WCAG AA ✓ Pass

Large Text (above 18pt) WCAG AAA ✓ Pass

Any Text WCAG AAA × Fail

If you want to check with other color combinations, try the [Color Contrast Checker](#).

HunterLab 52.7507, 6.6421, 16.3595 Background



This preview shows how black text looks on a background with the HunterLab color 52.7507, 6.6421, 16.3595.



This preview shows how white text looks on a background with the HunterLab color 52.7507, 6.6421,

Color Blindness Simulation

Color vision deficiency is a very complex topic, and I could not describe the different causes any better than Wikipedia does, so if you want to learn more, you should check out their [article about color blindness](#).

Dichromacy



Original Color

52.7507, 6.6421, 16.3595

Protanopia

52.9233, -3.9775, 15.0393

Deuteranopia

52.7514, 3.8740, 16.3117



Tritanopia

52.8399, 13.9206, 4.0883

Trichromacy



Original Color

52.7507, 6.6421, 16.3595

Protanomaly

52.8214, -0.0139, 15.3416

Deuteranomaly

52.6936, 5.0730, 16.2792

Tritanomaly

52.6630, 11.3825, 8.8732

Monochromacy



Original Color

52.7507, 6.6421, 16.3595

Achromatopsia

53.2117, -2.8392, 2.8911

Achromatomaly

52.9904, 0.0636, 8.2286

CSS Examples

Text

The CSS property to change the color of the text to HunterLab 52.7507, 6.6421, 16.3595 is called "color". The color property can be set on classes, ids or directly on the HTML element.

This example shows how text in the color `rgb(175, 136, 109)` looks like.

```
.text, #text, p{  
    color:rgb(175, 136, 109)  
}
```

If you want to add a text shadow in that color use the text-shadow property, you can generate a text shadow directly with our [CSS Text Shadow Generator](#).

Here you see how black text with a 4 pixel rgb(175, 136, 109) colored shadow looks like.

```
.shadow{ text-shadow: 4px 4px 2px rgb(175, 136, 109) }
```

Border

The CSS property to change the border of an element to HunterLab 52.7507, 6.6421, 16.3595 is called "border". The border property can be set on classes, ids or directly on the HTML element.

This example shows the color as border, it can be applied via the CSS property "border" or "border-color".

```
.border, #border, table{ border:4px solid rgb(175, 136, 109) }
```


If only the border color should be changed use the property `border-color`.

```
.border{ border-color:rgb(175, 136, 109) }
```

If you want to add a box shadow in that color use:

Here you see how a box with a 4 pixel `rgb(175, 136, 109)` colored shadow looks like.

```
.boxshadow{ -moz-box-shadow:4px 4px 4px  
4px rgb(175, 136, 109); -webkit-box-  
shadow:4px 4px 4px 4px rgb(175, 136, 109);  
box-shadow:4px 4px 4px 4px rgb(175, 136,  
109) }
```

Background

The CSS property to change the background color of an element to HunterLab 52.7507, 6.6421, 16.3595 is called "background". The background property can be set on classes, ids or directly on the HTML element.

```
.background, #background, body{  
background: rgb(175, 136, 109) }
```

If only the background color should be changed can be used:

```
.background{ background-color: rgb(175,  
136, 109) }
```

This example shows the color as background, it is applied via the CSS property "background".

To optimize and compress your CSS code, you can use our [online CSS compressor and optimizer](#) based on csstidy. If you want to create a linear or radial gradient as background or border, check our [CSS Gradient Generator](#).

Hey! You found this booklet interesting? Support Converting Colors with the new Membership Option!

The pro membership hides all ads, plus gives you double the colors in the color bucket, and more awesome pro features!

[Learn more, Memberships starting at \\$2.50/m!](#)

**Follow me
on Twitter!**

@ConvertingColor