

Converting Colors

HunterLab(52.8012, 49.2852,
-3.8457)

Have a look what the booklet for
HunterLab(52.8012, 49.2852,
-3.8457) contains.

HunterLab(52.8092, 48.9969, -3.9406)	3
<i>Conversions</i>	4
<i>Details</i>	6
<i>Harmonies</i>	12
<i>Previews</i>	24
<i>Color Blindness Simulation</i>	28
<i>CSS Examples</i>	31

Color

**HunterLab(52.8092, 48.9969,
-3.9406)**

Conversions

Conversions Part 1

Format	Color
Hex	E066A0
RGB	224, 102, 160
RGB Percent	88%, 40%, 63%
CMY	0.1216, 0.6000, 0.3725
CMYK	0.00, 0.54, 0.29, 0.12
HSL	331°, 66%, 64%
HSV	331°, 54%, 88%
XYZ	41.8370, 27.8881, 36.4356
YIQ	145.0900, 54.0940, 43.9020

Conversions

Conversions Part 2

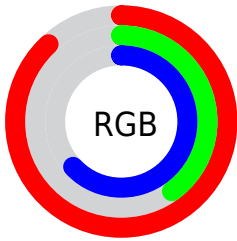
Format	Color
R_{YB}	224, 102, 160
Decimal	14706336
CIE _{Lab}	59.79, 53.67, -8.18
CIE _{LCh}	60, 54.291, 351.332
Yxy	27.8895, 0.3941, 0.2627
Android (android.graphics.Color)	4292896416 (0xFFE066A0)
YUV	145.0900, 7.3506, 69.2041
Hunter-Lab	52.8092, 48.9969, -3.9406

Details

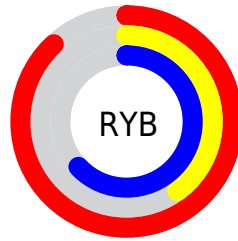
The HunterLab color $52.8092, 48.9969, -3.9406$ is a light color, and the websafe version is hex $CC6699$. A complement of this color would be $76.7398, -43.5338, 18.6492$, and the grayscale version is $53.2054, -2.8389, 2.8907$.

A 20% lighter version of the original color is $70.9086, 40.9528, -9.3454$, and $33.4142, 45.4982, -4.2857$ is the 20% darker color. If you saturate the color by 10%, you get $48.6552, 57.7320, -3.2752$, and if you desaturate by 10%, it is $57.7355, 39.3931, -3.6865$.

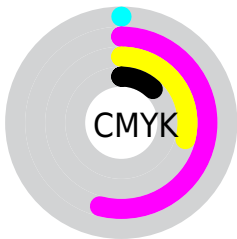
Distribution



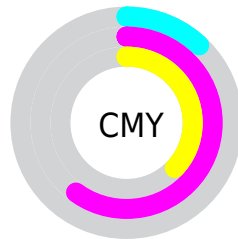
- Red (88%)
- Green (40%)
- Blue (63%)



- Red (88%)
- Yellow (40%)
- Blue (63%)



- Cyan (0%)
- Magenta (54%)
- Yellow (29%)
- Black (12%)



- Cyan (12%)
- Magenta (60%)
- Yellow (37%)

Brightness & Saturation Gradients

These gradients show how the HunterLab color 52.8092, 48.9969, -3.9406 changes by changing the brightness by 10 percent. The first figure shows a shift by +10% for each color and the second figure -10%.

Similar to the brightness gradients but the following saturation gradients show a change of the HunterLab color 52.8092, 48.9969, -3.9406 by changing the saturation by 10% instead.

52.8092, 48.9969,
-3.9406

52.8092, 48.9969,
-3.9406

170.8621, 61.2184,
-0.4456

42.7111, 47.1426,
-4.0829

75.0387, 52.3732,
-3.4781

33.3529, 45.1936,
-4.1600

87.0908, 53.9054,
-3.1705

24.8000, 43.1819,
-4.1619

99.7270, 55.3391,
-2.8166

17.1370, 41.2146,
-4.0776

112.9213, 56.6799,
-2.4195

10.4824, 39.6408,
-3.8950

126.6511, 57.9333,
-1.9817

0.0000, INF, -NF

0.0000, INF, NaN

140.8962, 59.1045,

-1.5055

0.0000, NaN, NaN

155.6386, 60.1981,
-0.9929

0.0000, NaN, NaN

■ 52.8092, 48.9969,
-3.9406

■ 52.8092, 48.9969,
-3.9406

■ 48.6552, 57.7320,
-3.2752

■ 57.7355, 39.3931,
-3.6865

■ 45.3716, 64.9577,
-1.5859

■ 63.3204, 29.4177,
-2.6732

■ 43.0259, 69.9969,
1.1184

■ 69.4637, 19.3763,
-1.0547

■ 41.6082, 72.4346,
4.6470

■ 76.0786, 9.4381,
1.0366

■ 41.1073, 72.9535,
6.7484

■ 83.0938, -0.3195,
3.4963

■ 90.4515, -9.8724,
6.2451

■ 96.8472, -17.3031,
7.8206

■ 97.2234, -15.1993,
2.4549

■ 97.2560, -15.0172,
1.9903

Harmonies

Analogous

The Analogous color harmony consists of three colors that are next to each other on the color wheel.



52.8105, 36.7797, -31.1657



52.8092, 48.9969, -3.9406



52.8105, 45.5647, 16.1143

Triad

The Triadic color harmony groups three colors that are evenly spaced from another and form a triangle on the color wheel.



52.8105, 48.9937, -3.9392



52.8105, -18.1083, 29.1150



52.8105, -27.9340, -42.2318

Complementary

The Complementary color scheme is a pair of colors which are on the opposite of each other on the color wheel.



52.8092, 48.9969, -3.9406



76.7398, -43.5338, 18.6492

Split Complementary

Split-complementary colors differ from the complementary color scheme. The scheme consists of three colors, the original color and two neighbors of the complement color.



52.8105, -38.3226, -15.0379



52.8092, 48.9969, -3.9406



52.8105, -33.3693, 23.1296

Square

The Square scheme is like the rectangle color scheme, but the four colors are evenly spaced on the color wheel.



52.8105, 48.9937, -3.9392



52.8105, 4.0819, 29.9917



52.8105, -40.1240, 8.8864



52.8105, -9.3859, -58.7524

Rectangle

The Rectangle color scheme consists of four colors that form a rectangle on the color wheel.



52.8092, 48.9969, -3.9406



52.8105, 35.0834, 23.9428



52.8105, -40.1240, 8.8864



52.8105, -32.3526, -33.5950

Sweetspot

The Sweet Spot groups the original color and five complimentary colors.



52.8105, 48.9937, -3.9392



86.8169, 12.8228, 0.7677



47.8427, 42.1263, -57.1769



39.4193, 7.0327, 0.1120

0.0000, NaN, NaN



46.2646, -2.4686, 2.5136

Same Dimension

The Same Dimension uses a secret algorithm to generate beautiful new colors.



52.8105, 48.9937, -3.9392



55.9243, 67.8046, -3.6513



51.6870, 41.1028, 18.1474



37.1598, 2.1108, 1.0416



31.3987, 55.7921, 4.6241



8.3748, 15.0822, -0.3263

Inverse Universe

The Inverse Universe completely reimagines the original color for something new.



52.8105, 48.9937, -3.9392



55.9243, 67.8046, -3.6513



77.7381, -32.6051, -6.4548



37.1598, 2.1108, 1.0416



31.3987, 55.7921, 4.6241



8.3748, 15.0822, -0.3263

Previews

White Background



This preview shows how the HunterLab color 52.8092, 48.9969, -3.9406 looks on a white background.

Color Contrast Check

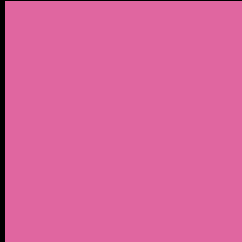
Large Text (above 18pt) WCAG AA ✓ Pass

Any Text WCAG AA × Fail

Large Text (above 18pt) WCAG AAA × Fail

Any Text WCAG AAA × Fail

Black Background



This preview shows how the HunterLab color 52.8092, 48.9969, -3.9406 looks on a black background.

Color Contrast Check

Large Text (above 18pt) WCAG AA ✓ Pass

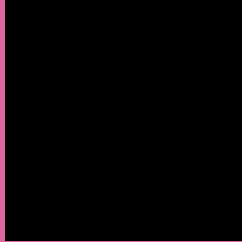
Any Text WCAG AA ✓ Pass

Large Text (above 18pt) WCAG AAA ✓ Pass

Any Text WCAG AAA × Fail

If you want to check with other color combinations, try the [Color Contrast Checker](#).

HunterLab 52.8092, 48.9969, -3.9406 Background



This preview shows how black text looks on a background with the HunterLab color 52.8092, 48.9969, -3.9406.



This preview shows how white text looks on a background with the HunterLab color 52.8092, 48.9969, -3.9406.

-3.9406.

Color Blindness Simulation

Color vision deficiency is a very complex topic, and I could not describe the different causes any better than Wikipedia does, so if you want to learn more, you should check out their [article about color blindness](#).

Dichromacy



Original Color

52.8092, 48.9969, -3.9406

Protanopia

53.1219, 2.6847, -19.6922

Deuteranopia

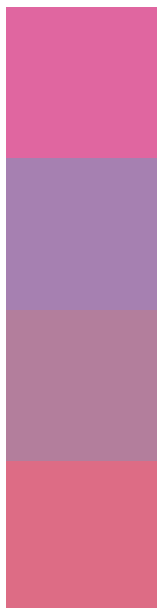
52.8765, 3.8017, -1.6311



Tritanopia

52.8134, 37.5973, 13.9602

Trichromacy



Original Color

52.8092, 48.9969, -3.9406

Protanomaly

51.6911, 17.9053, -15.5445

Deuteranomaly

51.8707, 19.5252, -3.6470

Tritanomaly

52.7169, 41.2050, 8.2481

Monochromacy



Original Color

52.8092, 48.9969, -3.9406

Achromatopsia

53.2117, -2.8392, 2.8911

Achromatomaly

51.8664, 15.2705, -0.7569

CSS Examples

Text

The CSS property to change the color of the text to HunterLab 52.8092, 48.9969, -3.9406 is called "color". The color property can be set on classes, ids or directly on the HTML element.

This example shows how text in the color `rgb(224, 102, 160)` looks like.

```
.text, #text, p{  
    color:rgb(224, 102, 160)  
}
```

If you want to add a text shadow in that color use the text-shadow property, you can generate a text shadow directly with our [CSS Text Shadow Generator](#).

Here you see how black text with a 4 pixel rgb(224, 102, 160) colored shadow looks like.

```
.shadow{ text-shadow: 4px 4px 2px rgb(224, 102, 160) }
```

Border

The CSS property to change the border of an element to HunterLab 52.8092, 48.9969, -3.9406 is called "border". The border property can be set on classes, ids or directly on the HTML element.

This example shows the color as border, it can be applied via the CSS property "border" or "border-color".

```
.border, #border, table{ border:4px solid rgb(224, 102, 160) }
```


If only the border color should be changed use the property `border-color`.

```
.border{ border-color:rgb(224, 102, 160) }
```

If you want to add a box shadow in that color use:

Here you see how a box with a 4 pixel `rgb(224, 102, 160)` colored shadow looks like.

```
.boxshadow{ -moz-box-shadow:4px 4px 4px  
4px rgb(224, 102, 160); -webkit-box-  
shadow:4px 4px 4px 4px rgb(224, 102, 160);  
box-shadow:4px 4px 4px 4px rgb(224, 102,  
160) }
```

Background

The CSS property to change the background color of an element to HunterLab 52.8092, 48.9969, -3.9406 is called "background". The background property can be set on classes, ids or directly on the HTML element.

```
.background, #background, body{  
background: rgb(224, 102, 160) }
```

If only the background color should be changed can be used:

```
.background{ background-color: rgb(224,  
102, 160) }
```

This example shows the color as background, it is applied via the CSS property "background".

To optimize and compress your CSS code, you can use our [online CSS compressor and optimizer](#) based on csstidy. If you want to create a linear or radial gradient as background or border, check our [CSS Gradient Generator](#).

Hey! You found this booklet interesting? Support Converting Colors with the new Membership Option!

The pro membership hides all ads, plus gives you double the colors in the color bucket, and more awesome pro features!

[Learn more, Memberships starting at \\$2.50/m!](#)

**Follow me
on Twitter!**

@ConvertingColor