

# Converting Colors

HunterLab(52.8019, 69.8947,  
8.3126)

Have a look what the booklet for  
HunterLab(52.8019, 69.8947,  
8.3126) contains.

<b>HunterLab(52.8004, 69.8434, 8.4317)</b> .....	3
<b><i>Conversions</i></b> .....	4
<b><i>Details</i></b> .....	6
<b><i>Harmonies</i></b> .....	12
<b><i>Previews</i></b> .....	24
<b><i>Color Blindness Simulation</i></b> .....	28
<b><i>CSS Examples</i></b> .....	31

# Color

**HunterLab(52.8004, 69.8434,  
8.4317)**

# Conversions

## Conversions Part 1

Format	Color
Hex	FF4A86
RGB	255, 74, 134
RGB Percent	100%, 29%, 53%
CMY	0.0000, 0.7098, 0.4745
CMYK	0.00, 0.71, 0.47, 0.00
HSL	340°, 100%, 65%
HSV	340°, 71%, 100%
XYZ	47.9919, 27.8788, 25.4060
YIQ	134.9590, 88.6160, 57.0320

# Conversions

## Conversions Part 2

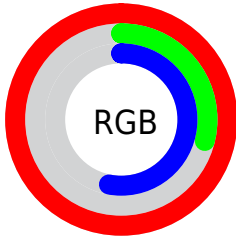
<b>Format</b>	<b>Color</b>
<a href="#">RYB</a>	<a href="#">255, 74, 134</a>
Decimal	<a href="#">16730758</a>
CIELab	<a href="#">59.78, 71.51, 7.53</a>
CIELCh	<a href="#">60, 71.907, 6.009</a>
Yxy	<a href="#">27.8804, 0.4739, 0.2753</a>
Android (android.graphics.Color)	<a href="#">4294920838 (0xFFFF4A86)</a>
YUV	<a href="#">134.9590, -0.4728, 105.2760</a>
Hunter-Lab	<a href="#">52.8004, 69.8434, 8.4317</a>

# Details

The HunterLab color **52.8004, 69.8434, 8.4317** is a light color, and the websafe version is hex **FF6699**. The color can be described as light washed rose. A complement of this color would be **87.7022, -54.8963, 18.1724**, and the grayscale version is **49.1853, -2.6244, 2.6723**.

A 20% lighter version of the original color is **64.9429, 48.1681, -2.0607**, and **34.4418, 60.8868, 7.4940** is the 20% darker color. If you saturate the color by 10%, you get **49.6983, 76.5424, 11.9036**, and if you desaturate by 10%, it is **57.0236, 60.9182, 5.7408**.

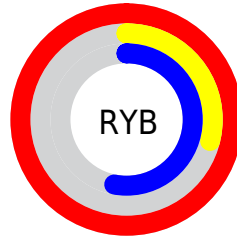
# Distribution



Red (100%)

Green (29%)

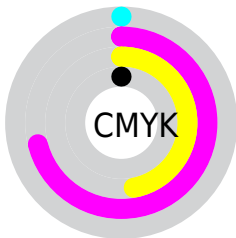
Blue (53%)



Red (100%)

Yellow (29%)

Blue (53%)

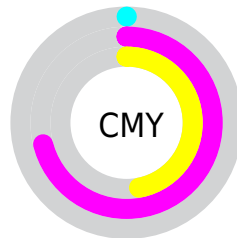


Cyan (0%)

Magenta (71%)

Yellow (47%)

Black (0%)



Cyan (0%)

Magenta (71%)

Yellow (47%)

# Brightness & Saturation Gradients

These gradients show how the HunterLab color 52.8004, 69.8434, 8.4317 changes by changing the brightness by 10 percent. The first figure shows a shift by +10% for each color and the second figure -10%.

Similar to the brightness gradients but the following saturation gradients show a change of the HunterLab color 52.8004, 69.8434, 8.4317 by changing the saturation by 10% instead.



52.8004, 69.8434,  
8.4317

52.8004, 69.8434,  
8.4317

170.8493, 86.8990,  
17.7867

42.7031, 67.5255,  
7.4575

75.0289, 74.2596,  
10.4105

33.3455, 65.2013,  
6.4846

87.0806, 76.3367,  
11.4177

24.7933, 62.9823,  
5.5061

99.7163, 78.3197,  
12.4393

17.1310, 61.1584,  
4.5071

112.9102, 80.2097,  
13.4762

10.4773, 60.5807,  
3.6408

126.6395, 82.0092,  
14.5290

0.0000, INF, NaN

0.0000, INF, NaN

140.8842, 83.7215,

15.5983

0.0000, NaN, NaN

155.6262, 85.3502,  
16.6841

0.0000, NaN, NaN

■ 52.8004, 69.8434,  
8.4317

■ 52.8004, 69.8434,  
8.4317

■ 49.6983, 76.5424,  
11.9036

■ 57.0236, 60.9182,  
5.7408

■ 47.7404, 80.3788,  
15.8813

■ 62.2583, 50.6068,  
3.9248

■ 46.8062, 81.5421,  
19.5090

■ 68.3706, 39.6097,  
2.9507

■ 75.2255, 28.4078,  
2.7163

■ 82.7040, 17.2786,  
3.1005

90.7070, 6.3567,  
3.9897

99.1545, -4.3092,  
5.2877

100.0000, -5.3358,  
5.4332

# Harmonies

## Analogous

The Analogous color harmony consists of three colors that are next to each other on the color wheel.



52.8019, 62.8312, -25.5110



52.8004, 69.8434, 8.4317



52.8019, 54.0660, 26.4107

# Triad

The Triadic color harmony groups three colors that are evenly spaced from another and form a triangle on the color wheel.



52.8019, 69.8387, 8.4330



52.8019, -33.2953, 31.1400



52.8019, -24.7863, -78.7299

# Complementary

The Complementary color scheme is a pair of colors which are on the opposite of each other on the color wheel.



52.8004, 69.8434, 8.4317



87.7022, -54.8963, 18.1724

# Split Complementary

Split-complementary colors differ from the complementary color scheme. The scheme consists of three colors, the original color and two neighbors of the complement color.



52.8019, -42.6617, -42.0741



52.8004, 69.8434, 8.4317



52.8019, -46.7296, 21.0184

# Square

The Square scheme is like the rectangle color scheme, but the four colors are evenly spaced on the color wheel.



52.8019, 69.8387, 8.4330



52.8019, -8.8722, 33.7994



52.8019, -49.7164, -3.3636



52.8019, 3.5172, -89.3195



# Rectangle

The Rectangle color scheme consists of four colors that form a rectangle on the color wheel.



52.8004, 69.8434, 8.4317



52.8019, 34.4929, 31.4831



52.8019, -49.7164, -3.3636



52.8019, -31.9920, -68.3206

# Sweetspot

The Sweet Spot groups the original color and five complimentary colors.



52.8019, 69.8387, 8.4330



82.6852, 17.3055, 3.0989



48.6595, 72.2923, -84.0269



37.2727, 9.4203, 1.3593

0.0000, NaN, NaN



46.2646, -2.4686, 2.5136



# Same Dimension

The Same Dimension uses a secret algorithm to generate beautiful new colors.



52.8019, 69.8387, 8.4330



48.7751, 78.4522, 13.4644



56.2946, 51.9224, 28.7719



42.5281, 2.2074, 1.9232



33.8704, 59.0766, 13.5728



10.6595, 18.7672, 2.9155



# Inverse Universe

The Inverse Universe completely reimagines the original color for something new.



52.8019, 69.8387, 8.4330



48.7751, 78.4522, 13.4644



79.0175, -30.4010, -22.8298



42.5281, 2.2074, 1.9232



33.8704, 59.0766, 13.5728



10.6595, 18.7672, 2.9155



# Previews

## White Background



This preview shows how the HunterLab color 52.8004, 69.8434, 8.4317 looks on a white background.

## Color Contrast Check

Large Text (above 18pt) WCAG AA ✓ Pass

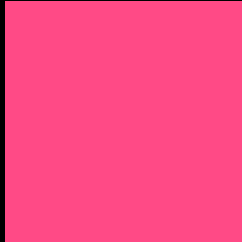
Any Text WCAG AA × Fail

Large Text (above 18pt) WCAG AAA × Fail

Any Text WCAG AAA × Fail



# Black Background



This preview shows how the HunterLab color 52.8004, 69.8434, 8.4317 looks on a black background.

## Color Contrast Check

Large Text (above 18pt) WCAG AA ✓ Pass

Any Text WCAG AA ✓ Pass

Large Text (above 18pt) WCAG AAA ✓ Pass

Any Text WCAG AAA × Fail

If you want to check with other color combinations, try the [Color Contrast Checker](#).

# HunterLab 52.8004, 69.8434, 8.4317 Background



This preview shows how black text looks on a background with the HunterLab color 52.8004, 69.8434, 8.4317.



This preview shows how white text looks on a background with the HunterLab color 52.8004, 69.8434,



# Color Blindness Simulation

Color vision deficiency is a very complex topic, and I could not describe the different causes any better than Wikipedia does, so if you want to learn more, you should check out their [article about color blindness](#).

## Dichromacy



### Original Color

52.8004, 69.8434, 8.4317

### Protanopia

52.9767, 1.1169, -11.5830

### Deuteranopia

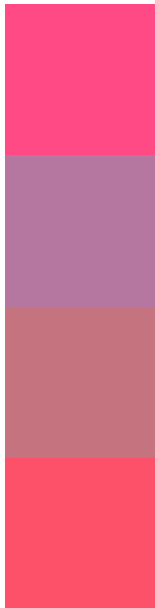
52.8633, 3.5591, 10.8756



## Tritanopia

52.6853, 60.6639, 22.8904

# Trichromacy



## Original Color

52.8004, 69.8434, 8.4317

## Protanomaly

50.2830, 24.8651, -7.2569

## Deuteranomaly

50.8190, 28.0869, 7.9800

## Tritanomaly

52.5737, 63.9274, 18.4429

# Monochromacy



## Original Color

52.8004, 69.8434, 8.4317

## Achromatopsia

49.2221, -2.6264, 2.6743

## Achromatomaly

48.1074, 22.9278, 1.7951

# CSS Examples

## Text

The CSS property to change the color of the text to HunterLab 52.8004, 69.8434, 8.4317 is called "color". The color property can be set on classes, ids or directly on the HTML element.

This example shows how text in the color `rgb(255, 74, 134)` looks like.

```
.text, #text, p{  
    color:rgb(255, 74, 134)  
}
```

If you want to add a text shadow in that color use the text-shadow property, you can generate a text shadow directly with our [CSS Text Shadow Generator](#).

Here you see how black text with a 4 pixel rgb(255, 74, 134) colored shadow looks like.

```
.shadow{ text-shadow: 4px 4px 2px rgb(255, 74, 134) }
```

## Border

The CSS property to change the border of an element to HunterLab 52.8004, 69.8434, 8.4317 is called "border". The border property can be set on classes, ids or directly on the HTML element.

This example shows the color as border, it can be applied via the CSS property "border" or "border-color".

```
.border, #border, table{ border:4px solid rgb(255, 74, 134) }
```



If only the border color should be changed use the property border-color.

```
.border{ border-color:rgb(255, 74, 134) }
```

If you want to add a box shadow in that color use:

Here you see how a box with a 4 pixel rgb(255, 74, 134) colored shadow looks like.

```
.boxshadow{ -moz-box-shadow:4px 4px 4px  
4px rgb(255, 74, 134); -webkit-box-  
shadow:4px 4px 4px 4px rgb(255, 74, 134);  
box-shadow:4px 4px 4px 4px rgb(255, 74,  
134) }
```

# Background

The CSS property to change the background color of an element to HunterLab 52.8004, 69.8434, 8.4317 is called "background". The background property can be set on classes, ids or directly on the HTML element.

```
.background, #background, body{  
background: rgb(255, 74, 134) }
```

If only the background color should be changed can be used:

```
.background{ background-color: rgb(255, 74,  
134) }
```

This example shows the color as background, it is applied via the CSS property "background".

To optimize and compress your CSS code, you can use our [online CSS compressor and optimizer](#) based on csstidy. If you want to create a linear or radial gradient as background or border, check our [CSS Gradient Generator](#).

Hey! You found this booklet interesting? Support Converting Colors with the new Membership Option!

The pro membership hides all ads, plus gives you double the colors in the color bucket, and more awesome pro features!

**[Learn more, Memberships starting at \\$2.50/m!](#)**

**Follow me  
on Twitter!**

@ConvertingColor