

Converting Colors

HunterLab(52.8194, 13.9465,
8.7399)

Have a look what the booklet for
HunterLab(52.8194, 13.9465,
8.7399) contains.

HunterLab(52.7412, 14.3280, 8.6108)	3
<i>Conversions</i>	4
<i>Details</i>	6
<i>Harmonies</i>	12
<i>Previews</i>	24
<i>Color Blindness Simulation</i>	28
<i>CSS Examples</i>	31

Color

**HunterLab(52.7412, 14.3280,
8.6108)**

Conversions

Conversions Part 1

Format	Color
Hex	B68383
RGB	182, 131, 131
RGB Percent	71%, 51%, 51%
CMY	0.2863, 0.4863, 0.4863
CMYK	0.00, 0.28, 0.28, 0.29
HSL	0°, 26%, 61%
HSV	0°, 28%, 71%
XYZ	31.5044, 27.8163, 25.1813
YIQ	146.2490, 30.3960, 10.8120

Conversions

Conversions Part 2

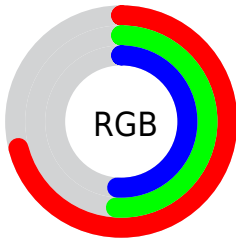
Format	Color
RYB	182, 131, 131
Decimal	11961219
CIELab	59.72, 19.64, 7.79
CIElCh	60, 21.128, 21.646
Yxy	27.8176, 0.3728, 0.3292
Android (android.graphics.Color)	4290151299 (0xFFB68383)
YUV	146.2490, -7.5178, 31.3536
Hunter-Lab	52.7412, 14.3280, 8.6108

Details

The HunterLab color **52.7412, 14.3280, 8.6108** is a light color, and the websafe version is hex **CC9999**. A complement of this color would be **64.5424, -17.4496, -1.1893**, and the grayscale version is **53.7353, -2.8672, 2.9195**.

A 20% lighter version of the original color is **74.8949, 15.2445, 10.5178**, and **33.2915, 13.4128, 6.5323** is the 20% darker color. If you saturate the color by 10%, you get **47.8538, 21.2375, 10.5755**, and if you desaturate by 10%, it is **58.0351, 7.6636, 6.7605**.

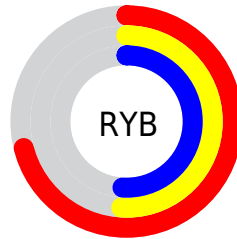
Distribution



Red (71%)

Green (51%)

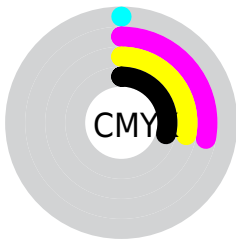
Blue (51%)



Red (71%)

Yellow (51%)

Blue (51%)

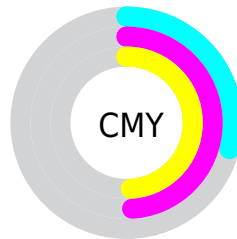


Cyan (0%)

Magenta (28%)

Yellow (28%)

Black (29%)



Cyan (29%)

Magenta (49%)

Yellow (49%)

Brightness & Saturation Gradients

These gradients show how the HunterLab color 52.7412, 14.3280, 8.6108 changes by changing the brightness by 10 percent. The first figure shows a shift by +10% for each color and the second figure -10%.

Similar to the brightness gradients but the following saturation gradients show a change of the HunterLab color 52.7412, 14.3280, 8.6108 by changing the saturation by 10% instead.

■ 52.7412, 14.3280,
8.6108

■ 52.7412, 14.3280,
8.6108

170.7614, 15.4366,
18.0717

■ 42.6477, 13.8367,
7.6204

■ 74.9621, 15.0340,
10.6174

■ 33.2945, 13.2408,
6.6302

■ 87.0104, 15.2717,
11.6374

■ 24.7471, 12.5211,
5.6322

■ 99.6428, 15.4413,
12.6711

■ 17.0902, 11.6559,
4.6108

112.8336, 15.5485,
13.7196

■ 10.4427, 10.6218,
3.7487

126.5599, 15.5979,
14.7834

0.0000, INF, NaN

0.0000, NaN, NaN

140.8017, 15.5935,

15.8632

0.0000, NaN, NaN

155.5410, 15.5387,
16.9593

0.0000, NaN, NaN

■ 52.7412, 14.3280,
8.6108

■ 52.7412, 14.3280,
8.6108

■ 47.8538, 21.2375,
10.5755

■ 58.0351, 7.6636,
6.7605

■ 43.4487, 28.2981,
12.6240

■ 63.6670, 1.2784,
5.0267

■ 39.6205, 35.2876,
14.6902

■ 69.5867, -4.8398,
3.4030

■ 36.4691, 41.8229,
16.6527

■ 75.7533, -10.7178,
1.8776

■ 34.0832, 47.3691,
18.3389

■ 82.1344, -16.3879,
0.4373

■ 32.5099, 51.3703,
19.5658

■ 88.7042, -21.8819,
-0.9303

■ 31.6725, 53.6284,
20.2617

■ 94.1728, -26.2420,
-1.9944

■ 31.5363, 54.0046,
20.3780

Harmonies

Analogous

The Analogous color harmony consists of three colors that are next to each other on the color wheel.



52.7424, 15.5002, 0.4123



52.7412, 14.3280, 8.6108



52.7424, 8.4047, 14.2583

Triad

The Triadic color harmony groups three colors that are evenly spaced from another and form a triangle on the color wheel.



52.7424, 14.3259, 8.6117



52.7424, -15.7639, 12.1327



52.7424, -5.3181, -16.2423

Complementary

The Complementary color scheme is a pair of colors which are on the opposite of each other on the color wheel.



52.7412, 14.3280, 8.6108



64.5424, -17.4496, -1.1893

Split Complementary

Split-complementary colors differ from the complementary color scheme. The scheme consists of three colors, the original color and two neighbors of the complement color.



52.7424, -13.1725, -11.8066



52.7412, 14.3280, 8.6108



52.7424, -18.9321, 5.2166

Square

The Square scheme is like the rectangle color scheme, but the four colors are evenly spaced on the color wheel.



52.7424, 14.3259, 8.6117



52.7424, -9.0751, 16.0403



52.7424, -18.0163, -3.5978



52.7424, 3.7471, -14.9206

Rectangle

The Rectangle color scheme consists of four colors that form a rectangle on the color wheel.



52.7412, 14.3280, 8.6108



52.7424, 2.7671, 16.2738



52.7424, -18.0163, -3.5978



52.7424, -8.1781, -15.3517

Sweetspot

The Sweet Spot groups the original color and five complimentary colors.



52.7424, 14.3259, 8.6117



85.6373, 1.8171, 6.7940



54.3648, 22.5750, -14.3709



39.6977, 1.4520, 3.3538



96.5975, -5.1542, 5.2483



43.2801, -2.3093, 2.3515

Same Dimension

The Same Dimension uses a secret algorithm to generate beautiful new colors.



52.7424, 14.3259, 8.6117



66.6346, 25.3562, 13.3127



59.6063, 1.5825, 15.3977



30.0205, 1.0053, 2.5051



26.5016, 45.3824, 17.1247



4.9762, 8.5196, 3.2155

Inverse Universe

The Inverse Universe completely reimagines the original color for something new.



64.5424, -17.4496, -1.1893



85.9621, -26.9967, -2.8435



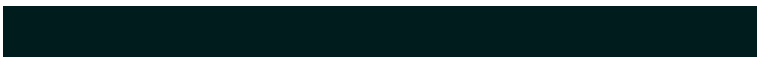
56.6992, -5.4820, -11.4364



31.9539, -4.1543, 0.9149



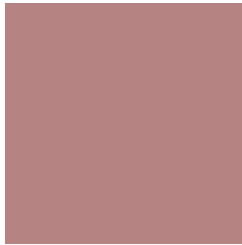
50.9975, -27.0340, -5.3838



9.5753, -5.0760, -1.0106

Previews

White Background



This preview shows how the HunterLab color 52.7412, 14.3280, 8.6108 looks on a white background.

Color Contrast Check

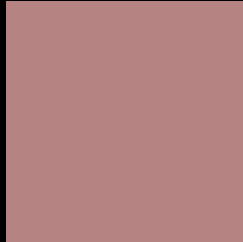
Large Text (above 18pt) WCAG AA ✓ Pass

Any Text WCAG AA × Fail

Large Text (above 18pt) WCAG AAA × Fail

Any Text WCAG AAA × Fail

Black Background



This preview shows how the HunterLab color 52.7412, 14.3280, 8.6108 looks on a black background.

Color Contrast Check

Large Text (above 18pt) WCAG AA ✓ Pass

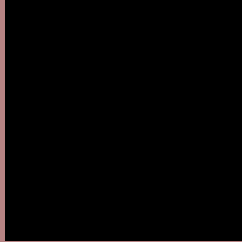
Any Text WCAG AA ✓ Pass

Large Text (above 18pt) WCAG AAA ✓ Pass

Any Text WCAG AAA × Fail

If you want to check with other color combinations, try the [Color Contrast Checker](#).

HunterLab 52.7412, 14.3280, 8.6108 Background



This preview shows how black text looks on a background with the HunterLab color 52.7412, 14.3280, 8.6108.



This preview shows how white text looks on a background with the HunterLab color 52.7412, 14.3280,

8.6108.

Color Blindness Simulation

Color vision deficiency is a very complex topic, and I could not describe the different causes any better than Wikipedia does, so if you want to learn more, you should check out their [article about color blindness](#).

Dichromacy



Original Color

52.7412, 14.3280, 8.6108

Protanopia

52.9881, -2.5380, 5.7022

Deuteranopia

52.7859, 3.5473, 8.8672



Tritanopia

52.8450, 16.4373, 5.0138

Trichromacy



Original Color

52.7412, 14.3280, 8.6108

Protanomaly

52.6195, 3.2492, 6.6533

Deuteranomaly

52.6935, 7.4164, 8.8364

Tritanomaly

52.7624, 16.0142, 6.1974

Monochromacy



Original Color

52.7412, 14.3280, 8.6108

Achromatopsia

53.6135, -2.8607, 2.9129

Achromatomaly

53.2389, 2.8253, 4.7915

CSS Examples

Text

The CSS property to change the color of the text to HunterLab 52.7412, 14.3280, 8.6108 is called "color". The color property can be set on classes, ids or directly on the HTML element.

This example shows how text in the color `rgb(182, 131, 131)` looks like.

```
.text, #text, p{  
    color:rgb(182, 131, 131)  
}
```

If you want to add a text shadow in that color use the text-shadow property, you can generate a text shadow directly with our [CSS Text Shadow Generator](#).

Here you see how black text with a 4 pixel rgb(182, 131, 131) colored shadow looks like.

```
.shadow{ text-shadow: 4px 4px 2px rgb(182, 131, 131) }
```

Border

The CSS property to change the border of an element to HunterLab 52.7412, 14.3280, 8.6108 is called "border". The border property can be set on classes, ids or directly on the HTML element.

This example shows the color as border, it can be applied via the CSS property "border" or "border-color".

```
.border, #border, table{ border:4px solid rgb(182, 131, 131) }
```


If only the border color should be changed use the property `border-color`.

```
.border{ border-color:rgb(182, 131, 131) }
```

If you want to add a box shadow in that color use:

Here you see how a box with a 4 pixel `rgb(182, 131, 131)` colored shadow looks like.

```
.boxshadow{ -moz-box-shadow:4px 4px 4px  
4px rgb(182, 131, 131); -webkit-box-  
shadow:4px 4px 4px 4px rgb(182, 131, 131);  
box-shadow:4px 4px 4px 4px rgb(182, 131,  
131) }
```

Background

The CSS property to change the background color of an element to HunterLab 52.7412, 14.3280, 8.6108 is called "background". The background property can be set on classes, ids or directly on the HTML element.

```
.background, #background, body{  
background: rgb(182, 131, 131) }
```

If only the background color should be changed can be used:

```
.background{ background-color: rgb(182,  
131, 131) }
```

This example shows the color as background, it is applied via the CSS property "background".

To optimize and compress your CSS code, you can use our [online CSS compressor and optimizer](#) based on csstidy. If you want to create a linear or radial gradient as background or border, check our [CSS Gradient Generator](#).

Hey! You found this booklet interesting? Support Converting Colors with the new Membership Option!

The pro membership hides all ads, plus gives you double the colors in the color bucket, and more awesome pro features!

[Learn more, Memberships starting at \\$2.50/m!](#)

**Follow me
on Twitter!**

@ConvertingColor