

Converting Colors

HunterLab(52.8887, 46.8666,
5.1838)

Have a look what the booklet for
HunterLab(52.8887, 46.8666,
5.1838) contains.

HunterLab(52.8720, 47.0293, 5.1446)	3
<i>Conversions</i>	4
<i>Details</i>	6
<i>Harmonies</i>	12
<i>Previews</i>	24
<i>Color Blindness Simulation</i>	28
<i>CSS Examples</i>	31

Color

**HunterLab(52.8720, 47.0293,
5.1446)**

Conversions

Conversions Part 1

Format	Color
Hex	E3678D
RGB	227, 103, 141
RGB Percent	89%, 40%, 55%
CMY	0.1098, 0.5960, 0.4471
CMYK	0.00, 0.55, 0.38, 0.11
HSL	342°, 69%, 65%
HSV	342°, 55%, 89%
XYZ	41.3365, 27.9545, 28.4164
YIQ	144.4080, 61.7060, 38.1060

Conversions

Conversions Part 2

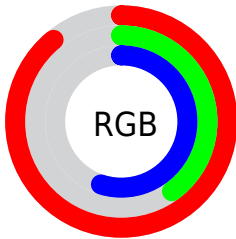
Format	Color
RYB	227, 103, 141
Decimal	14903181
CIELab	59.85, 51.89, 2.96
CIELCh	60, 51.974, 3.268
Yxy	27.9559, 0.4231, 0.2861
Android (android.graphics.Color)	4293093261 (0xFFE3678D)
YUV	144.4080, -1.6801, 72.4332
Hunter-Lab	52.8720, 47.0293, 5.1446

Details

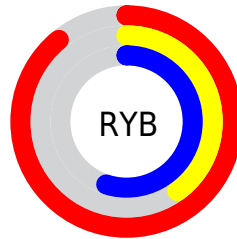
The HunterLab color **52.8720, 47.0293, 5.1446** is a light color, and the websafe version is hex **FF6699**. A complement of this color would be **78.4197, -41.0658, 11.2003**, and the grayscale version is **52.9646, -2.8261, 2.8777**.

A 20% lighter version of the original color is **70.4335, 36.9208, 1.0832**, and **33.4575, 43.3167, 3.8353** is the 20% darker color. If you saturate the color by 10%, you get **48.5804, 55.6661, 7.1253**, and if you desaturate by 10%, it is **57.9685, 37.6332, 3.8699**.

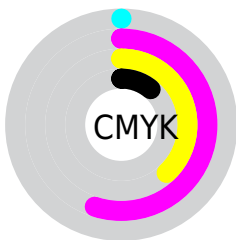
Distribution



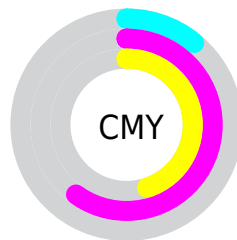
- Red (89%)
- Green (40%)
- Blue (55%)



- Red (89%)
- Yellow (40%)
- Blue (55%)



- Cyan (0%)
- Magenta (55%)
- Yellow (38%)
- Black (11%)



- Cyan (11%)
- Magenta (60%)
- Yellow (45%)

Brightness & Saturation Gradients

These gradients show how the HunterLab color 52.8720, 47.0293, 5.1446 changes by changing the brightness by 10 percent. The first figure shows a shift by +10% for each color and the second figure -10%.

Similar to the brightness gradients but the following saturation gradients show a change of the HunterLab color 52.8720, 47.0293, 5.1446 by changing the saturation by 10% instead.

■ 52.8720, 47.0293,
5.1446

■ 52.8720, 47.0293,
5.1446

170.9550, 58.7232,
12.7006

■ 42.7697, 45.2317,
4.4337

■ 75.1093, 50.2856,
6.6498

■ 33.4068, 43.3344,
3.7485

■ 87.1651, 51.7574,
7.4410

■ 24.8489, 41.3631,
3.0895

■ 99.8047, 53.1311,
8.2574

■ 17.1801, 39.4108,
2.4549

■ 113.0023, 54.4127,
9.0987

■ 10.5190, 37.7876,
1.8389

126.7352, 55.6077,
9.9642

0.0000, INF, NaN

0.0000, INF, NaN

140.9833, 56.7213,

10.8534

0.0000, NaN, NaN

155.7287, 57.7584,
11.7657

0.0000, NaN, NaN

■ 52.8720, 47.0293,
5.1446

■ 52.8720, 47.0293,
5.1446

■ 48.5804, 55.6661,
7.1253

■ 57.9685, 37.6332,
3.8699

■ 45.2026, 62.8969,
9.7876

■ 63.7464, 27.9641,
3.2390

■ 42.8153, 68.0174,
12.9845

■ 70.0986, 18.3071,
3.1621

■ 41.4117, 70.5846,
16.4276

■ 76.9333, 8.8101,
3.5451

■ 40.9481, 71.1912,
18.1944

■ 84.1757, -0.4668,
4.3039

■ 91.7663, -9.5130,
5.3692

■ 97.3803, -14.8207,
4.0718

■ 97.5043, -14.1297,
2.3057

Harmonies

Analogous

The Analogous color harmony consists of three colors that are next to each other on the color wheel.



52.8734, 41.0670, -18.8960



52.8720, 47.0293, 5.1446



52.8734, 37.9117, 20.6893

Triad

The Triadic color harmony groups three colors that are evenly spaced from another and form a triangle on the color wheel.



52.8734, 47.0259, 5.1458



52.8734, -24.3051, 26.8507



52.8734, -20.7248, -47.8975

Complementary

The Complementary color scheme is a pair of colors which are on the opposite of each other on the color wheel.



52.8720, 47.0293, 5.1446



78.4197, -41.0658, 11.2003

Split Complementary

Split-complementary colors differ from the complementary color scheme. The scheme consists of three colors, the original color and two neighbors of the complement color.



52.8734, -34.0505, -24.6673



52.8720, 47.0293, 5.1446



52.8734, -35.8650, 18.1067

Square

The Square scheme is like the rectangle color scheme, but the four colors are evenly spaced on the color wheel.



52.8734, 47.0259, 5.1458



52.8734, -5.2408, 29.5195



52.8734, -39.1158, 0.5051



52.8734, -0.3631, -56.0070

Rectangle

The Rectangle color scheme consists of four colors that form a rectangle on the color wheel.



52.8720, 47.0293, 5.1446



52.8734, 25.2725, 26.2085



52.8734, -39.1158, 0.5051



52.8734, -26.0551, -41.2302

Sweetspot

The Sweet Spot groups the original color and five complimentary colors.



52.8734, 47.0259, 5.1458



86.5933, 11.6414, 3.9510



50.8977, 49.0711, -52.4336



39.3025, 6.4190, 1.7747

0.0000, NaN, NaN



46.2646, -2.4686, 2.5136

Same Dimension

The Same Dimension uses a secret algorithm to generate beautiful new colors.



52.8734, 47.0259, 5.1458



54.6541, 65.1434, 8.6224



56.7146, 31.5361, 22.0827



38.0005, 1.8822, 1.8356



31.3004, 54.4748, 13.4666



8.6030, 15.1549, 2.2878

Inverse Universe

The Inverse Universe completely reimagines the original color for something new.



52.8734, 47.0259, 5.1458



54.6541, 65.1434, 8.6224



71.9328, -23.8535, -15.9931



38.0005, 1.8822, 1.8356



31.3004, 54.4748, 13.4666



8.6030, 15.1549, 2.2878

Previews

White Background



This preview shows how the HunterLab color 52.8720, 47.0293, 5.1446 looks on a white background.

Color Contrast Check

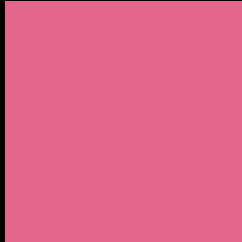
Large Text (above 18pt) WCAG AA ✓ Pass

Any Text WCAG AA × Fail

Large Text (above 18pt) WCAG AAA × Fail

Any Text WCAG AAA × Fail

Black Background



This preview shows how the HunterLab color 52.8720, 47.0293, 5.1446 looks on a black background.

Color Contrast Check

Large Text (above 18pt) WCAG AA ✓ Pass

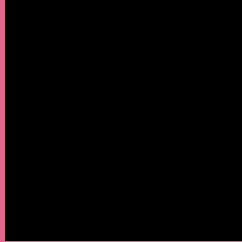
Any Text WCAG AA ✓ Pass

Large Text (above 18pt) WCAG AAA ✓ Pass

Any Text WCAG AAA × Fail

If you want to check with other color combinations, try the [Color Contrast Checker](#).

HunterLab 52.8720, 47.0293, 5.1446 Background



This preview shows how black text looks on a background with the HunterLab color 52.8720, 47.0293, 5.1446.



This preview shows how white text looks on a background with the HunterLab color 52.8720, 47.0293,

Color Blindness Simulation

Color vision deficiency is a very complex topic, and I could not describe the different causes any better than Wikipedia does, so if you want to learn more, you should check out their [article about color blindness](#).

Dichromacy



Original Color

52.8720, 47.0293, 5.1446

Protanopia

53.2220, -0.0709, -6.8619

Deuteranopia

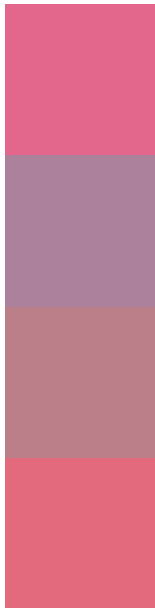
53.0913, 3.4207, 7.1766



Tritanopia

52.8871, 40.7929, 15.1196

Trichromacy



Original Color

52.8720, 47.0293, 5.1446

Protanomaly

51.8377, 15.5633, -3.7596

Deuteranomaly

52.3679, 18.6386, 5.7999

Tritanomaly

52.8508, 43.1359, 11.9295

Monochromacy



Original Color

52.8720, 47.0293, 5.1446

Achromatopsia

52.8104, -2.8178, 2.8693

Achromatomaly

51.6550, 14.1838, 2.2502

CSS Examples

Text

The CSS property to change the color of the text to HunterLab 52.8720, 47.0293, 5.1446 is called "color". The color property can be set on classes, ids or directly on the HTML element.

This example shows how text in the color `rgb(227, 103, 141)` looks like.

```
.text, #text, p{  
    color:rgb(227, 103, 141)  
}
```

If you want to add a text shadow in that color use the text-shadow property, you can generate a text shadow directly with our [CSS Text Shadow Generator](#).

Here you see how black text with a 4 pixel rgb(227, 103, 141) colored shadow looks like.

```
.shadow{ text-shadow: 4px 4px 2px rgb(227, 103, 141) }
```

Border

The CSS property to change the border of an element to HunterLab 52.8720, 47.0293, 5.1446 is called "border". The border property can be set on classes, ids or directly on the HTML element.

This example shows the color as border, it can be applied via the CSS property "border" or "border-color".

```
.border, #border, table{ border:4px solid rgb(227, 103, 141) }
```


If only the border color should be changed use the property `border-color`.

```
.border{ border-color:rgb(227, 103, 141) }
```

If you want to add a box shadow in that color use:

Here you see how a box with a 4 pixel `rgb(227, 103, 141)` colored shadow looks like.

```
.boxshadow{ -moz-box-shadow:4px 4px 4px  
4px rgb(227, 103, 141); -webkit-box-  
shadow:4px 4px 4px 4px rgb(227, 103, 141);  
box-shadow:4px 4px 4px 4px rgb(227, 103,  
141) }
```

Background

The CSS property to change the background color of an element to HunterLab 52.8720, 47.0293, 5.1446 is called "background". The background property can be set on classes, ids or directly on the HTML element.

```
.background, #background, body{  
background: rgb(227, 103, 141) }
```

If only the background color should be changed can be used:

```
.background{ background-color: rgb(227,  
103, 141) }
```

This example shows the color as background, it is applied via the CSS property "background".

To optimize and compress your CSS code, you can use our [online CSS compressor and optimizer](#) based on csstidy. If you want to create a linear or radial gradient as background or border, check our [CSS Gradient Generator](#).

Hey! You found this booklet interesting? Support Converting Colors with the new Membership Option!

The pro membership hides all ads, plus gives you double the colors in the color bucket, and more awesome pro features!

[Learn more, Memberships starting at \\$2.50/m!](#)

**Follow me
on Twitter!**

@ConvertingColor