

Converting Colors

HunterLab(52.9136, 51.4178,
7.4461)

Have a look what the booklet for
HunterLab(52.9136, 51.4178,
7.4461) contains.

HunterLab(52.9201, 51.5634, 7.4156)	3
<i>Conversions</i>	4
<i>Details</i>	6
<i>Harmonies</i>	12
<i>Previews</i>	24
<i>Color Blindness Simulation</i>	28
<i>CSS Examples</i>	31

Color

**HunterLab(52.9201, 51.5634,
7.4156)**

Conversions

Conversions Part 1

Format	Color
Hex	EA6288
RGB	234, 98, 136
RGB Percent	92%, 38%, 53%
CMY	0.0824, 0.6157, 0.4667
CMYK	0.00, 0.58, 0.42, 0.08
HSL	343°, 76%, 65%
HSV	343°, 58%, 92%
XYZ	42.7433, 28.0054, 26.4453
YIQ	142.9960, 68.8580, 40.6500

Conversions

Conversions Part 2

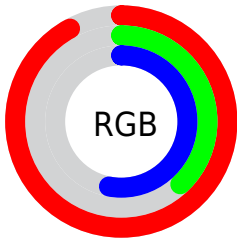
Format	Color
R_{YB}	234, 98, 136
Decimal	15360648
CIE _{Lab}	59.89, 55.94, 6.07
CIE _{LCh}	60, 56.269, 6.191
Yxy	28.0069, 0.4398, 0.2881
Android (android.graphics.Color)	4293550728 (0xFFEA6288)
YUV	142.9960, -3.4490, 79.8105
Hunter-Lab	52.9201, 51.5634, 7.4156

Details

The HunterLab color **52.9201, 51.5634, 7.4156** is a light color, and the websafe version is hex **FF6699**. A complement of this color would be **80.8879, -43.5180, 10.7977**, and the grayscale version is **52.4036, -2.7961, 2.8472**.

A 20% lighter version of the original color is **69.3147, 38.3131, 2.2009**, and **33.4729, 47.7272, 5.4901** is the 20% darker color. If you saturate the color by 10%, you get **48.7922, 60.0680, 9.8565**, and if you desaturate by 10%, it is **57.9326, 42.0682, 5.6518**.

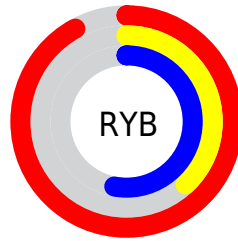
Distribution



Red (92%)

Green (38%)

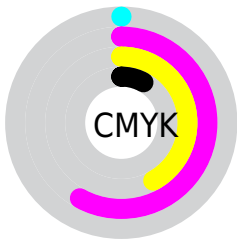
Blue (53%)



Red (92%)

Yellow (38%)

Blue (53%)

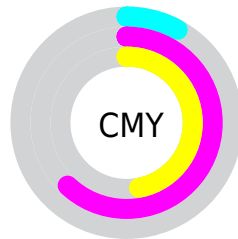


Cyan (0%)

Magenta (58%)

Yellow (42%)

Black (8%)



Cyan (8%)

Magenta (62%)

Yellow (47%)

Brightness & Saturation Gradients

These gradients show how the HunterLab color 52.9201, 51.5634, 7.4156 changes by changing the brightness by 10 percent. The first figure shows a shift by +10% for each color and the second figure -10%.

Similar to the brightness gradients but the following saturation gradients show a change of the HunterLab color 52.9201, 51.5634, 7.4156 by changing the saturation by 10% instead.

■ 52.9201, 51.5634,
7.4156

■ 52.9201, 51.5634,
7.4156

171.0262, 64.4308,
16.1888

■ 42.8145, 49.6404,
6.5271

■ 75.1634, 55.0840,
9.2405

■ 33.4481, 47.6305,
5.6483

■ 87.2219, 56.6899,
10.1777

■ 24.8863, 45.5728,
4.7746

■ 99.8642, 58.1970,
11.1330

■ 17.2132, 43.5909,
3.8958

■ 113.0643, 59.6106,
12.1067

■ 10.5471, 42.0788,
3.0631

126.7996, 60.9360,
13.0991

0.0000, INF, NaN

0.0000, INF, NaN

141.0501, 62.1781,

14.1102

0.0000, NaN, NaN

155.7977, 63.3416,
15.1401

0.0000, NaN, NaN

■ 52.9201, 51.5634,
7.4156

■ 52.9201, 51.5634,
7.4156

■ 48.7922, 60.0680,
9.8565

■ 57.9326, 42.0682,
5.6518

■ 45.6542, 66.8665,
12.8845

■ 63.6997, 32.1600,
4.5433

■ 43.5618, 71.2753,
16.2756

■ 70.1033, 22.1961,
4.0191

■ 42.4408, 73.1009,
19.6680

■ 77.0409, 12.3711,
3.9898

■ 42.2829, 73.3236,
20.2458

■ 84.4282, 2.7704,
4.3700

■ 92.1976, -6.5832,
5.0859

■ 98.0666, -12.1910,
3.5051

■ 98.0981, -12.0164,
3.0568

Harmonies

Analogous

The Analogous color harmony consists of three colors that are next to each other on the color wheel.



52.9215, 46.5819, -18.1783



52.9201, 51.5634, 7.4156



52.9215, 39.9956, 22.8565

Triad

The Triadic color harmony groups three colors that are evenly spaced from another and form a triangle on the color wheel.



52.9215, 51.5596, 7.4168



52.9215, -27.4997, 27.5340



52.9215, -20.2611, -55.3860

Complementary

The Complementary color scheme is a pair of colors which are on the opposite of each other on the color wheel.



52.9201, 51.5634, 7.4156



80.8879, -43.5180, 10.7977

Split Complementary

Split-complementary colors differ from the complementary color scheme. The scheme consists of three colors, the original color and two neighbors of the complement color.



52.9215, -35.2677, -30.3112



52.9201, 51.5634, 7.4156



52.9215, -38.8941, 17.7627

Square

The Square scheme is like the rectangle color scheme, but the four colors are evenly spaced on the color wheel.



52.9215, 51.5596, 7.4168



52.9215, -7.7311, 30.6346



52.9215, -41.4599, -2.0964



52.9215, 2.2633, -62.3367

Rectangle

The Rectangle color scheme consists of four colors that form a rectangle on the color wheel.



52.9201, 51.5634, 7.4156



52.9215, 25.4991, 27.9751



52.9215, -41.4599, -2.0964



52.9215, -26.2176, -48.3827

Sweetspot

The Sweet Spot groups the original color and five complimentary colors.



52.9215, 51.5596, 7.4168



85.7561, 12.5288, 4.4225



51.3245, 55.7197, -57.3214



38.9359, 6.7970, 2.0265

0.0000, NaN, NaN



46.2646, -2.4686, 2.5136

Same Dimension

The Same Dimension uses a secret algorithm to generate beautiful new colors.



52.9215, 51.5596, 7.4168



52.9282, 68.0707, 11.5548



58.0307, 33.1341, 24.5302



38.8886, 1.8899, 2.0037



31.7256, 55.0728, 14.7503



8.9792, 15.7599, 2.8344

Inverse Universe

The Inverse Universe completely reimagines the original color for something new.



52.9215, 51.5596, 7.4168



52.9282, 68.0707, 11.5548



72.0958, -23.1483, -19.9955



38.8886, 1.8899, 2.0037



31.7256, 55.0728, 14.7503



8.9792, 15.7599, 2.8344

Previews

White Background



This preview shows how the HunterLab color 52.9201, 51.5634, 7.4156 looks on a white background.

Color Contrast Check

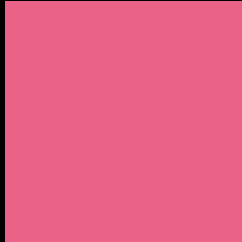
Large Text (above 18pt) WCAG AA ✓ Pass

Any Text WCAG AA × Fail

Large Text (above 18pt) WCAG AAA × Fail

Any Text WCAG AAA × Fail

Black Background



This preview shows how the HunterLab color 52.9201, 51.5634, 7.4156 looks on a black background.

Color Contrast Check

Large Text (above 18pt) WCAG AA ✓ Pass

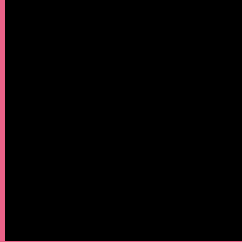
Any Text WCAG AA ✓ Pass

Large Text (above 18pt) WCAG AAA ✓ Pass

Any Text WCAG AAA × Fail

If you want to check with other color combinations, try the [Color Contrast Checker](#).

HunterLab 52.9201, 51.5634, 7.4156 Background



This preview shows how black text looks on a background with the HunterLab color 52.9201, 51.5634, 7.4156.



This preview shows how white text looks on a background with the HunterLab color 52.9201, 51.5634,

Color Blindness Simulation

Color vision deficiency is a very complex topic, and I could not describe the different causes any better than Wikipedia does, so if you want to learn more, you should check out their [article about color blindness](#).

Dichromacy



Original Color

52.9201, 51.5634, 7.4156

Protanopia

53.2033, -0.3380, -5.3153

Deuteranopia

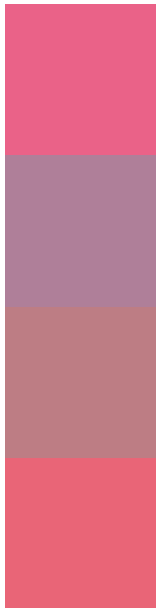
53.1605, 3.3945, 9.2625



Tritanopia

52.8981, 45.5883, 16.8593

Trichromacy



Original Color

52.9201, 51.5634, 7.4156

Protanomaly

51.5680, 17.1243, -2.5740

Deuteranomaly

52.1076, 20.0917, 7.6214

Tritanomaly

52.8800, 47.8423, 13.8536

Monochromacy



Original Color

52.9201, 51.5634, 7.4156

Achromatopsia

52.4097, -2.7964, 2.8475

Achromatomaly

51.2858, 15.4566, 3.1894

CSS Examples

Text

The CSS property to change the color of the text to HunterLab 52.9201, 51.5634, 7.4156 is called "color". The color property can be set on classes, ids or directly on the HTML element.

This example shows how text in the color `rgb(234, 98, 136)` looks like.

```
.text, #text, p{  
    color:rgb(234, 98, 136)  
}
```

If you want to add a text shadow in that color use the text-shadow property, you can generate a text shadow directly with our [CSS Text Shadow Generator](#).

Here you see how black text with a 4 pixel rgb(234, 98, 136) colored shadow looks like.

```
.shadow{ text-shadow: 4px 4px 2px rgb(234, 98, 136) }
```

Border

The CSS property to change the border of an element to HunterLab 52.9201, 51.5634, 7.4156 is called "border". The border property can be set on classes, ids or directly on the HTML element.

This example shows the color as border, it can be applied via the CSS property "border" or "border-color".

```
.border, #border, table{ border:4px solid rgb(234, 98, 136) }
```


If only the border color should be changed use the property `border-color`.

```
.border{ border-color:rgb(234, 98, 136) }
```

If you want to add a box shadow in that color use:

Here you see how a box with a 4 pixel `rgb(234, 98, 136)` colored shadow looks like.

```
.boxshadow{ -moz-box-shadow:4px 4px 4px  
4px rgb(234, 98, 136); -webkit-box-  
shadow:4px 4px 4px 4px rgb(234, 98, 136);  
box-shadow:4px 4px 4px 4px rgb(234, 98,  
136) }
```

Background

The CSS property to change the background color of an element to HunterLab 52.9201, 51.5634, 7.4156 is called "background". The background property can be set on classes, ids or directly on the HTML element.

```
.background, #background, body{  
background: rgb(234, 98, 136) }
```

If only the background color should be changed can be used:

```
.background{ background-color: rgb(234, 98,  
136) }
```

This example shows the color as background, it is applied via the CSS property "background".

To optimize and compress your CSS code, you can use our [online CSS compressor and optimizer](#) based on csstidy. If you want to create a linear or radial gradient as background or border, check our [CSS Gradient Generator](#).

Hey! You found this booklet interesting? Support Converting Colors with the new Membership Option!

The pro membership hides all ads, plus gives you double the colors in the color bucket, and more awesome pro features!

[Learn more, Memberships starting at \\$2.50/m!](#)

**Follow me
on Twitter!**

@ConvertingColor