

Converting Colors

HunterLab(52.9170, 12.0009,
20.9522)

Have a look what the booklet for
HunterLab(52.9170, 12.0009,
20.9522) contains.

HunterLab(52.9170, 12.0009, 20.9522)	3
<i>Conversions</i>	4
<i>Details</i>	6
<i>Harmonies</i>	12
<i>Previews</i>	24
<i>Color Blindness Simulation</i>	28
<i>CSS Examples</i>	31

Color

**HunterLab(52.9170, 12.0009,
20.9522)**

Conversions

Conversions Part 1

Format	Color
Hex	BC845E
RGB	188, 132, 94
RGB Percent	74%, 52%, 37%
CMY	0.2627, 0.4823, 0.6314
CMYK	0.00, 0.30, 0.50, 0.26
HSL	24°, 41%, 55%
HSV	24°, 50%, 74%
XYZ	31.0107, 28.0021, 14.3602
YIQ	144.4120, 45.5740, 0.0540

Conversions

Conversions Part 2

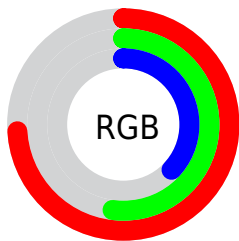
Format	Color
RYB	188, 158, 94
Decimal	12354654
CIELab	59.89, 17.10, 29.04
CIELCh	60, 33.701, 59.517
Yxy	28.0035, 0.4226, 0.3816
Android (android.graphics.Color)	4290544734 (0xFFBC845E)
YUV	144.4120, -24.8531, 38.2267
Hunter-Lab	52.9170, 12.0009, 20.9522

Details

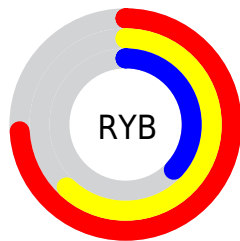
The HunterLab color **52.9170, 12.0009, 20.9522** is a dark color, and the websafe version is hex **CC9966**. A complement of this color would be **52.7467, -9.0609, -21.1352**, and the grayscale version is **53.0605, -2.8312, 2.8829**.

A 20% lighter version of the original color is **75.0567, 12.4507, 25.3067**, and **33.3847, 11.3313, 15.9937** is the 20% darker color. If you saturate the color by 10%, you get **49.8295, 16.0729, 23.0225**, and if you desaturate by 10%, it is **56.2009, 8.2436, 18.3553**.

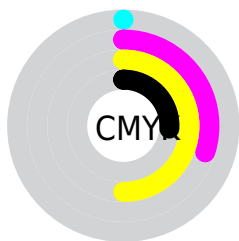
Distribution



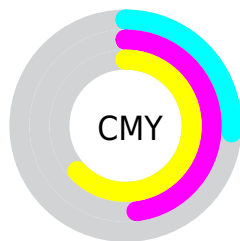
- Red (74%)
- Green (52%)
- Blue (37%)



- Red (74%)
- Yellow (62%)
- Blue (37%)



- Cyan (0%)
- Magenta (30%)
- Yellow (50%)
- Black (26%)



- Cyan (26%)
- Magenta (48%)
- Yellow (63%)

Brightness & Saturation Gradients

These gradients show how the HunterLab color 52.9170, 12.0009, 20.9522 changes by changing the brightness by 10 percent. The first figure shows a shift by +10% for each color and the second figure -10%.

Similar to the brightness gradients but the following saturation gradients show a change of the HunterLab color 52.9170, 12.0009, 20.9522 by changing the saturation by 10% instead.

■ 52.9170, 12.0009,
20.9522

■ 52.9170, 12.0009,
20.9522

171.0215, 12.1787,
39.6420

■ 42.8115, 11.6349,
18.5697

■ 75.1598, 12.4719,
25.4326

■ 33.4454, 11.1711,
16.0498

■ 87.2182, 12.5995,
27.5702

■ 24.8838, 10.5903,
13.3453

■ 99.8602, 12.6632,
29.6584

■ 17.2110, 9.8702,
10.7825

■ 113.0601, 12.6682,
31.7071

■ 10.5453, 8.9825,
7.3817

126.7953, 12.6188,
33.7242

0.0000, INF, NaN

0.0000, NaN, NaN

141.0456, 12.5187,

35.7159

0.0000, NaN, NaN

155.7931, 12.3711,
37.6871

0.0000, NaN, NaN

■ 52.9170, 12.0009,
20.9522

■ 52.9170, 12.0009,
20.9522

■ 49.8295, 16.0729,
23.0225

■ 56.2009, 8.2436,
18.3553

■ 46.9553, 20.4542,
24.5022

■ 59.6582, 4.8046,
15.2919

■ 44.3177, 25.1045,
25.3395

■ 63.2728, 1.6673,
11.8206

■ 41.9379, 29.9512,
25.5078

■ 67.0295, -1.1881,
7.9926

■ 39.8265, 34.8407,
25.1508

■ 70.9148, -3.7840,
3.8525

■ 39.8264, 34.8411,
25.1508

■ 74.9170, -6.1433,
-0.5615

■ 79.0260, -8.2882,
-5.2172

■ 83.2327, -10.2395,
-10.0873

■ 87.2207, -13.7369,
-10.8069

Harmonies

Analogous

The Analogous color harmony consists of three colors that are next to each other on the color wheel.



52.9183, 23.5502, 14.3051



52.9170, 12.0009, 20.9522



52.9183, -2.5924, 23.0615

Triad

The Triadic color harmony groups three colors that are evenly spaced from another and form a triangle on the color wheel.



52.9183, 11.9984, 20.9529



52.9183, -27.8136, 3.1025



52.9183, 11.5505, -25.6230

Complementary

The Complementary color scheme is a pair of colors which are on the opposite of each other on the color wheel.



52.9170, 12.0009, 20.9522



52.7467, -9.0609, -21.1352

Split Complementary

Split-complementary colors differ from the complementary color scheme. The scheme consists of three colors, the original color and two neighbors of the complement color.



52.9183, -3.0601, -30.8968



52.9170, 12.0009, 20.9522



52.9183, -24.8733, -11.8447

Square

The Square scheme is like the rectangle color scheme, but the four colors are evenly spaced on the color wheel.



52.9183, 11.9984, 20.9529



52.9183, -24.6794, 14.5976



52.9183, -16.1799, -25.2902



52.9183, 23.2727, -12.3357

Rectangle

The Rectangle color scheme consists of four colors that form a rectangle on the color wheel.



52.9170, 12.0009, 20.9522



52.9183, -11.7815, 22.2092



52.9183, -16.1799, -25.2902



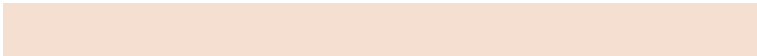
52.9183, 6.7668, -28.5279

Sweetspot

The Sweet Spot groups the original color and five complimentary colors.



52.9183, 11.9984, 20.9529



87.5616, 0.3718, 13.5196



45.7296, 38.1643, -8.7835



40.1126, 0.5529, 6.7679



97.7295, -5.2146, 5.3098



44.2712, -2.3622, 2.4053

Same Dimension

The Same Dimension uses a secret algorithm to generate beautiful new colors.



52.9183, 11.9984, 20.9529



66.6886, 22.2000, 31.2261



66.0149, -10.6146, 30.9810



31.8631, -0.6454, 3.6634



33.0711, 28.2101, 20.8722



7.4644, 3.4165, 4.6594

Inverse Universe

The Inverse Universe completely reimagines the original color for something new.



52.7467, -9.0609, -21.1352



66.3664, -11.4736, -36.3385



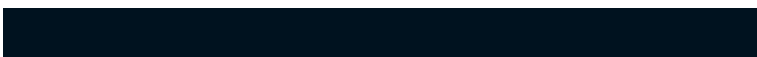
39.7381, 13.9344, -46.2553



31.8508, -2.6319, -0.2859



32.4184, -0.5758, -39.2773



7.3273, -1.5652, -5.7796

Previews

White Background



This preview shows how the HunterLab color 52.9170, 12.0009, 20.9522 looks on a white background.

Color Contrast Check

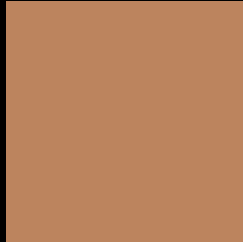
Large Text (above 18pt) WCAG AA ✓ Pass

Any Text WCAG AA × Fail

Large Text (above 18pt) WCAG AAA × Fail

Any Text WCAG AAA × Fail

Black Background



This preview shows how the HunterLab color 52.9170, 12.0009, 20.9522 looks on a black background.

Color Contrast Check

Large Text (above 18pt) WCAG AA ✓ Pass

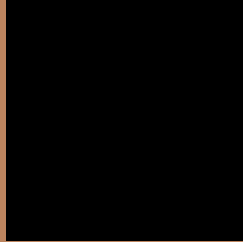
Any Text WCAG AA ✓ Pass

Large Text (above 18pt) WCAG AAA ✓ Pass

Any Text WCAG AAA × Fail

If you want to check with other color combinations, try the [Color Contrast Checker](#).

HunterLab 52.9170, 12.0009, 20.9522 Background



This preview shows how black text looks on a background with the HunterLab color 52.9170, 12.0009, 20.9522.



This preview shows how white text looks on a background with the HunterLab color 52.9170, 12.0009,

Color Blindness Simulation

Color vision deficiency is a very complex topic, and I could not describe the different causes any better than Wikipedia does, so if you want to learn more, you should check out their [article about color blindness](#).

Dichromacy



Original Color

52.9170, 12.0009, 20.9522

Protanopia

53.1221, -5.3038, 19.4658

Deuteranopia

52.8828, 3.7205, 21.0407



Tritanopia

53.0686, 20.7228, 7.0402

Trichromacy



Original Color

52.9170, 12.0009, 20.9522

Protanomaly

52.8621, 0.9727, 19.9060

Deuteranomaly

52.8983, 6.5351, 21.1029

Tritanomaly

53.0635, 17.4319, 12.7909

Monochromacy



Original Color

52.9170, 12.0009, 20.9522

Achromatopsia

52.8104, -2.8178, 2.8693

Achromatomaly

52.6651, 1.5215, 10.2570

CSS Examples

Text

The CSS property to change the color of the text to HunterLab 52.9170, 12.0009, 20.9522 is called "color". The color property can be set on classes, ids or directly on the HTML element.

This example shows how text in the color `rgb(188, 132, 94)` looks like.

```
.text, #text, p{  
    color:rgb(188, 132, 94)  
}
```

If you want to add a text shadow in that color use the text-shadow property, you can generate a text shadow directly with our [CSS Text Shadow Generator](#).

Here you see how black text with a 4 pixel rgb(188, 132, 94) colored shadow looks like.

```
.shadow{ text-shadow: 4px 4px 2px rgb(188, 132, 94) }
```

Border

The CSS property to change the border of an element to HunterLab 52.9170, 12.0009, 20.9522 is called "border". The border property can be set on classes, ids or directly on the HTML element.

This example shows the color as border, it can be applied via the CSS property "border" or "border-color".

```
.border, #border, table{ border:4px solid rgb(188, 132, 94) }
```


If only the border color should be changed use the property `border-color`.

```
.border{ border-color:rgb(188, 132, 94) }
```

If you want to add a box shadow in that color use:

Here you see how a box with a 4 pixel `rgb(188, 132, 94)` colored shadow looks like.

```
.boxshadow{ -moz-box-shadow:4px 4px 4px  
4px rgb(188, 132, 94); -webkit-box-  
shadow:4px 4px 4px 4px rgb(188, 132, 94);  
box-shadow:4px 4px 4px 4px rgb(188, 132,  
94) }
```

Background

The CSS property to change the background color of an element to HunterLab 52.9170, 12.0009, 20.9522 is called "background". The background property can be set on classes, ids or directly on the HTML element.

```
.background, #background, body{  
background: rgb(188, 132, 94) }
```

If only the background color should be changed can be used:

```
.background{ background-color: rgb(188,  
132, 94) }
```

This example shows the color as background, it is applied via the CSS property "background".

To optimize and compress your CSS code, you can use our [online CSS compressor and optimizer](#) based on csstidy. If you want to create a linear or radial gradient as background or border, check our [CSS Gradient Generator](#).

Hey! You found this booklet interesting? Support Converting Colors with the new Membership Option!

The pro membership hides all ads, plus gives you double the colors in the color bucket, and more awesome pro features!

[Learn more, Memberships starting at \\$2.50/m!](#)

**Follow me
on Twitter!**

@ConvertingColor