

Converting Colors

HunterLab(52.9575, 10.6595,
13.4747)

Have a look what the booklet for
HunterLab(52.9575, 10.6595,
13.4747) contains.

HunterLab(52.9731, 10.4669, 13.6416)	3
<i>Conversions</i>	4
<i>Details</i>	6
<i>Harmonies</i>	12
<i>Previews</i>	24
<i>Color Blindness Simulation</i>	28
<i>CSS Examples</i>	31

Color

**HunterLab(52.9731, 10.4669,
13.6416)**

Conversions

Conversions Part 1

Format	Color
Hex	B48676
RGB	180, 134, 118
RGB Percent	71%, 53%, 46%
CMY	0.2941, 0.4745, 0.5373
CMYK	0.00, 0.26, 0.34, 0.29
HSL	15°, 29%, 58%
HSV	15°, 34%, 71%
XYZ	30.6175, 28.0615, 20.9423
YIQ	145.9300, 32.5520, 4.7760

Conversions

Conversions Part 2

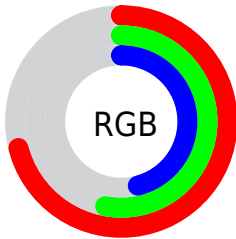
Format	Color
R_{YB}	180, 140, 118
Decimal	11830902
CIE _{Lab}	59.95, 15.40, 15.49
CIE _{LCh}	60, 21.847, 45.163
Yxy	28.0628, 0.3845, 0.3524
Android (android.graphics.Color)	4290020982 (0xFFB48676)
YUV	145.9300, -13.7695, 29.8794
Hunter-Lab	52.9731, 10.4669, 13.6416

Details

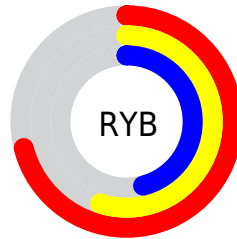
The HunterLab color **52.9731, 10.4669, 13.6416** is a dark color, and the websafe version is hex **CC9999**. A complement of this color would be **58.0488, -12.4583, -8.5520**, and the grayscale version is **53.6308, -2.8616, 2.9139**.

A 20% lighter version of the original color is **75.1315, 10.9536, 16.4759**, and **33.4940, 10.0271, 10.5574** is the 20% darker color. If you saturate the color by 10%, you get **49.2072, 15.1596, 16.0592**, and if you desaturate by 10%, it is **56.9737, 6.0544, 10.9729**.

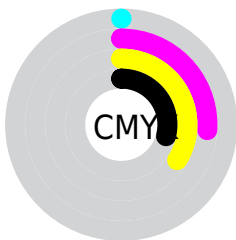
Distribution



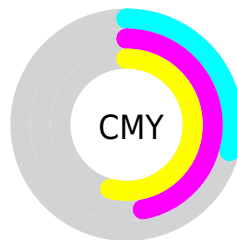
- Red (71%)
- Green (53%)
- Blue (46%)



- Red (71%)
- Yellow (55%)
- Blue (46%)



- Cyan (0%)
- Magenta (26%)
- Yellow (34%)
- Black (29%)



- Cyan (29%)
- Magenta (47%)
- Yellow (54%)

Brightness & Saturation Gradients

These gradients show how the HunterLab color 52.9731, 10.4669, 13.6416 changes by changing the brightness by 10 percent. The first figure shows a shift by +10% for each color and the second figure -10%.

Similar to the brightness gradients but the following saturation gradients show a change of the HunterLab color 52.9731, 10.4669, 13.6416 by changing the saturation by 10% instead.

■ 52.9731, 10.4669,
13.6416

■ 52.9731, 10.4669,
13.6416

171.1043, 10.0229,
26.3025

■ 42.8638, 10.1858,
12.1730

■ 75.2228, 10.7809,
16.5001

■ 33.4935, 9.8112,
10.6576

■ 87.2844, 10.8348,
17.9063

■ 24.9274, 9.3247,
9.0721

■ 99.9295, 10.8277,
19.3052

■ 17.2496, 8.7041,
7.3763

113.1323, 10.7645,
20.7009

■ 10.5780, 7.9193,
6.7559

126.8703, 10.6491,
22.0963

0.0000, INF, NaN

0.0000, NaN, NaN

141.1233, 10.4851,

23.4939

0.0000, NaN, NaN

155.8734, 10.2755,
24.8955

0.0000, NaN, NaN

■ 52.9731, 10.4669,
13.6416

■ 52.9731, 10.4669,
13.6416

■ 49.2072, 15.1596,
16.0592

■ 56.9737, 6.0544,
10.9729

■ 45.7056, 20.1279,
18.1604

■ 61.1765, 1.9200,
8.1007

■ 42.5074, 25.3258,
19.8705

■ 65.5588, -1.9578,
5.0645

■ 39.6543, 30.6605,
21.1067

■ 70.1000, -5.6026,
1.8937

■ 37.1881, 35.9746,
21.7933

■ 74.7831, -9.0392,
-1.3893

■ 35.1463, 41.0391,
21.8909

■ 79.5939, -12.2917,
-4.7676

■ 34.1959, 43.6032,
21.8347

■ 84.5202, -15.3820,
-8.2280

■ 89.2951, -19.7777,
-8.1405

■ 93.7692, -26.3241,
-2.5009

Harmonies

Analogous

The Analogous color harmony consists of three colors that are next to each other on the color wheel.



52.9744, 15.6813, 7.1684



52.9731, 10.4669, 13.6416



52.9744, 1.8576, 16.9052

Triad

The Triadic color harmony groups three colors that are evenly spaced from another and form a triangle on the color wheel.



52.9744, 10.4647, 13.6424



52.9744, -19.1258, 7.0822



52.9744, 1.9599, -16.4415

Complementary

The Complementary color scheme is a pair of colors which are on the opposite of each other on the color wheel.



52.9731, 10.4669, 13.6416



58.0488, -12.4583, -8.5520

Split Complementary

Split-complementary colors differ from the complementary color scheme. The scheme consists of three colors, the original color and two neighbors of the complement color.



52.9744, -7.3590, -16.4755



52.9731, 10.4669, 13.6416



52.9744, -19.1026, -1.7921

Square

The Square scheme is like the rectangle color scheme, but the four colors are evenly spaced on the color wheel.



52.9744, 10.4647, 13.6424



52.9744, -14.9952, 13.5888



52.9744, -14.9295, -10.7476



52.9744, 10.5441, -10.6615

Rectangle

The Rectangle color scheme consists of four colors that form a rectangle on the color wheel.



52.9731, 10.4669, 13.6416



52.9744, -4.4390, 17.2557



52.9744, -14.9295, -10.7476



52.9744, -1.2004, -17.1544

Sweetspot

The Sweet Spot groups the original color and five complimentary colors.



52.9744, 10.4647, 13.6424



84.8710, 0.3138, 9.1856



50.3576, 25.4698, -10.1553



39.0796, 0.4844, 4.5315



95.4677, -5.0939, 5.1869



42.2927, -2.2566, 2.2978

Same Dimension

The Same Dimension uses a secret algorithm to generate beautiful new colors.



52.9744, 10.4647, 13.6424



67.6177, 18.6417, 20.7706



61.4343, -4.4862, 21.2353



29.7491, -0.0466, 3.0790



28.7331, 35.9361, 18.3343



5.9663, 4.0626, 3.7476

Inverse Universe

The Inverse Universe completely reimagines the original color for something new.



58.0488, -12.4583, -8.5520



75.7591, -18.3572, -14.9133



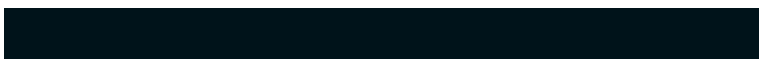
49.0505, 2.1040, -21.9326



30.4184, -3.0402, 0.1613



37.7142, -10.5692, -24.3237



7.3166, -2.7431, -3.2235

Previews

White Background



This preview shows how the HunterLab color 52.9731, 10.4669, 13.6416 looks on a white background.

Color Contrast Check

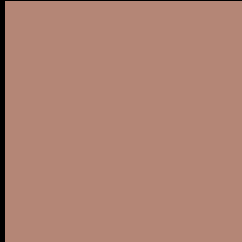
Large Text (above 18pt) WCAG AA ✓ Pass

Any Text WCAG AA × Fail

Large Text (above 18pt) WCAG AAA × Fail

Any Text WCAG AAA × Fail

Black Background



This preview shows how the HunterLab color 52.9731, 10.4669, 13.6416 looks on a black background.

Color Contrast Check

Large Text (above 18pt) WCAG AA ✓ Pass

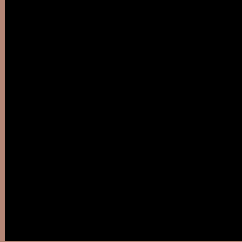
Any Text WCAG AA ✓ Pass

Large Text (above 18pt) WCAG AAA ✓ Pass

Any Text WCAG AAA × Fail

If you want to check with other color combinations, try the [Color Contrast Checker](#).

HunterLab 52.9731, 10.4669, 13.6416 Background



This preview shows how black text looks on a background with the HunterLab color 52.9731, 10.4669, 13.6416.



This preview shows how white text looks on a background with the HunterLab color 52.9731, 10.4669, 13.6416.

Color Blindness Simulation

Color vision deficiency is a very complex topic, and I could not describe the different causes any better than Wikipedia does, so if you want to learn more, you should check out their [article about color blindness](#).

Dichromacy



Original Color

52.9731, 10.4669, 13.6416

Protanopia

52.9641, -3.3858, 11.6000

Deuteranopia

52.9853, 3.5980, 13.8801



Tritanopia

53.0102, 15.7105, 4.7551

Trichromacy



Original Color

52.9731, 10.4669, 13.6416

Protanomaly

52.7428, 1.5466, 12.1923

Deuteranomaly

52.8643, 5.9814, 13.8042

Tritanomaly

52.9337, 13.7267, 8.0029

Monochromacy



Original Color

52.9731, 10.4669, 13.6416

Achromatopsia

53.6135, -2.8607, 2.9129

Achromatomaly

53.2848, 1.2781, 6.9386

CSS Examples

Text

The CSS property to change the color of the text to HunterLab 52.9731, 10.4669, 13.6416 is called "color". The color property can be set on classes, ids or directly on the HTML element.

This example shows how text in the color `rgb(180, 134, 118)` looks like.

```
.text, #text, p{  
    color:rgb(180, 134, 118)  
}
```

If you want to add a text shadow in that color use the text-shadow property, you can generate a text shadow directly with our [CSS Text Shadow Generator](#).

Here you see how black text with a 4 pixel rgb(180, 134, 118) colored shadow looks like.

```
.shadow{ text-shadow: 4px 4px 2px rgb(180, 134, 118) }
```

Border

The CSS property to change the border of an element to HunterLab 52.9731, 10.4669, 13.6416 is called "border". The border property can be set on classes, ids or directly on the HTML element.

This example shows the color as border, it can be applied via the CSS property "border" or "border-color".

```
.border, #border, table{ border:4px solid rgb(180, 134, 118) }
```


If only the border color should be changed use the property `border-color`.

```
.border{ border-color:rgb(180, 134, 118) }
```

If you want to add a box shadow in that color use:

Here you see how a box with a 4 pixel `rgb(180, 134, 118)` colored shadow looks like.

```
.boxshadow{ -moz-box-shadow:4px 4px 4px  
4px rgb(180, 134, 118); -webkit-box-  
shadow:4px 4px 4px 4px rgb(180, 134, 118);  
box-shadow:4px 4px 4px 4px rgb(180, 134,  
118) }
```

Background

The CSS property to change the background color of an element to HunterLab 52.9731, 10.4669, 13.6416 is called "background". The background property can be set on classes, ids or directly on the HTML element.

```
.background, #background, body{  
background: rgb(180, 134, 118) }
```

If only the background color should be changed can be used:

```
.background{ background-color: rgb(180,  
134, 118) }
```

This example shows the color as background, it is applied via the CSS property "background".

To optimize and compress your CSS code, you can use our [online CSS compressor and optimizer](#) based on csstidy. If you want to create a linear or radial gradient as background or border, check our [CSS Gradient Generator](#).

Hey! You found this booklet interesting? Support Converting Colors with the new Membership Option!

The pro membership hides all ads, plus gives you double the colors in the color bucket, and more awesome pro features!

[Learn more, Memberships starting at \\$2.50/m!](#)

**Follow me
on Twitter!**

@ConvertingColor