

Converting Colors

HunterLab(52.9610, 9.4841,
20.9452)

Have a look what the booklet for
HunterLab(52.9610, 9.4841,
20.9452) contains.

HunterLab(52.9610, 9.4841, 20.9452)	3
<i>Conversions</i>	4
<i>Details</i>	6
<i>Harmonies</i>	12
<i>Previews</i>	24
<i>Color Blindness Simulation</i>	28
<i>CSS Examples</i>	31

Color

**HunterLab(52.9610, 9.4841,
20.9452)**

Conversions

Conversions Part 1

Format	Color
Hex	B8865E
RGB	184, 134, 94
RGB Percent	72%, 53%, 37%
CMY	0.2784, 0.4745, 0.6314
CMYK	0.00, 0.27, 0.49, 0.28
HSL	27°, 39%, 55%
HSV	27°, 49%, 72%
XYZ	30.3126, 28.0487, 14.4059
YIQ	144.3900, 42.6400, -1.8400

Conversions

Conversions Part 2

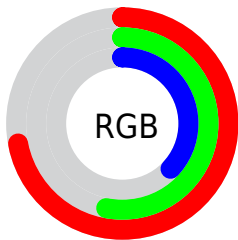
Format	Color
RYB	184, 166, 94
Decimal	12093022
CIELab	59.93, 14.31, 29.01
CIElCh	60, 32.346, 63.739
Yxy	28.0500, 0.4166, 0.3855
Android (android.graphics.Color)	4290283102 (0xFFB8865E)
YUV	144.3900, -24.8423, 34.7380
Hunter-Lab	52.9610, 9.4841, 20.9452

Details

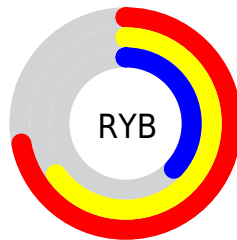
The HunterLab color $52.9610, 9.4841, 20.9452$ is a dark color, and the websafe version is hex $CC9966$. A complement of this color would be $50.7797, -7.1695, -21.7824$, and the grayscale version is $53.0523, -2.8307, 2.8824$.

A 20% lighter version of the original color is $75.1414, 9.8441, 25.3371$, and $33.3693, 8.9266, 15.9399$ is the 20% darker color. If you saturate the color by 10%, you get $50.0677, 13.0563, 23.0689$, and if you desaturate by 10%, it is $56.0216, 6.2222, 18.2814$.

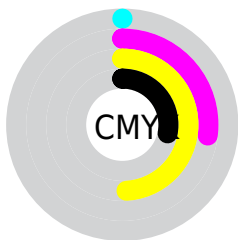
Distribution



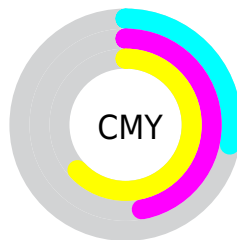
- Red (72%)
- Green (53%)
- Blue (37%)



- Red (72%)
- Yellow (65%)
- Blue (37%)



- Cyan (0%)
- Magenta (27%)
- Yellow (49%)
- Black (28%)



- Cyan (28%)
- Magenta (47%)
- Yellow (63%)

Brightness & Saturation Gradients

These gradients show how the HunterLab color 52.9610, 9.4841, 20.9452 changes by changing the brightness by 10 percent. The first figure shows a shift by +10% for each color and the second figure -10%.

Similar to the brightness gradients but the following saturation gradients show a change of the HunterLab color 52.9610, 9.4841, 20.9452 by changing the saturation by 10% instead.

■ 52.9610, 9.4841,
20.9452

■ 52.9610, 9.4841,
20.9452

171.0865, 8.6381,
39.6171

■ 42.8525, 9.2576,
18.5657

■ 75.2093, 9.6961,
25.4206

■ 33.4831, 8.9408,
16.0491

■ 87.2701, 9.7024,
27.5559

■ 24.9180, 8.5157,
13.3485

■ 99.9146, 9.6496,
29.6421

■ 17.2413, 7.9603,
10.7800

■ 113.1168, 9.5422,
31.6889

■ 10.5710, 7.2437,
7.3997

126.8542, 9.3843,
33.7042

0.0000, INF, NaN

0.0000, NaN, NaN

141.1066, 9.1791,

35.6942

0.0000, NaN, NaN

155.8561, 8.9295,
37.6638

0.0000, NaN, NaN

■ 52.9610, 9.4841,
20.9452

■ 52.9610, 9.4841,
20.9452

■ 50.0677, 13.0563,
23.0689

■ 56.0216, 6.2222,
18.2814

■ 47.3538, 16.9422,
24.5961

■ 59.2308, 3.2699,
15.1314

■ 44.8374, 21.1176,
25.4829

■ 62.5761, 0.6094,
11.5493

■ 42.5346, 25.5346,
25.7078

■ 66.0453, -1.7785,
7.5837

■ 40.4545, 30.0871,
25.3704

■ 69.6277, -3.9149,
3.2779

■ 40.2402, 30.5768,
25.3311

■ 73.3136, -5.8208,
-1.3301

■ 77.0945, -7.5167,
-6.2077

■ 80.9630, -9.0216,
-11.3265

■ 84.7357, -11.3351,
-14.1822

Harmonies

Analogous

The Analogous color harmony consists of three colors that are next to each other on the color wheel.



52.9623, 21.1954, 15.1150



52.9610, 9.4841, 20.9452



52.9623, -4.5547, 22.4489

Triad

The Triadic color harmony groups three colors that are evenly spaced from another and form a triangle on the color wheel.



52.9623, 9.4817, 20.9459



52.9623, -26.8770, 1.2037



52.9623, 12.7944, -22.8176

Complementary

The Complementary color scheme is a pair of colors which are on the opposite of each other on the color wheel.



52.9610, 9.4841, 20.9452



50.7797, -7.1695, -21.7824

Split Complementary

Split-complementary colors differ from the complementary color scheme. The scheme consists of three colors, the original color and two neighbors of the complement color.



52.9623, -1.0805, -29.1524



52.9610, 9.4841, 20.9452



52.9623, -23.2116, -13.2121

Square

The Square scheme is like the rectangle color scheme, but the four colors are evenly spaced on the color wheel.



52.9623, 9.4817, 20.9459



52.9623, -24.6646, 12.9149



52.9623, -14.1083, -25.2510



52.9623, 23.2418, -9.6007

Rectangle

The Rectangle color scheme consists of four colors that form a rectangle on the color wheel.



52.9610, 9.4841, 20.9452



52.9623, -13.1322, 21.2299



52.9623, -14.1083, -25.2510



52.9623, 8.3280, -25.9573

Sweetspot

The Sweet Spot groups the original color and five complimentary colors.



52.9623, 9.4817, 20.9459



85.9437, -0.3977, 13.6517



44.9892, 35.8568, -6.9536



39.4542, 0.1357, 6.8459



96.5975, -5.1542, 5.2483



43.2801, -2.3093, 2.3515

Same Dimension

The Same Dimension uses a secret algorithm to generate beautiful new colors.



52.9623, 9.4817, 20.9459



67.0060, 18.1216, 31.3206



65.4517, -11.7033, 30.5331



31.0672, -0.7933, 3.6580



33.6105, 24.8812, 21.1462



7.2251, 2.6112, 4.4978

Inverse Universe

The Inverse Universe completely reimagines the original color for something new.



50.7797, -7.1695, -21.7824



63.4556, -8.5395, -37.8566



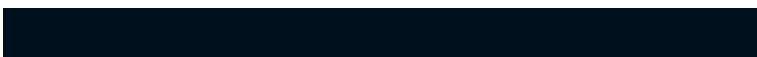
38.6717, 14.6018, -45.4398



30.8617, -2.3951, -0.3892



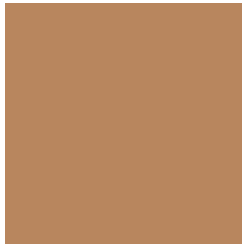
30.1765, 2.3401, -42.7696



6.6513, -1.1906, -5.7433

Previews

White Background



This preview shows how the HunterLab color 52.9610, 9.4841, 20.9452 looks on a white background.

Color Contrast Check

Large Text (above 18pt) WCAG AA ✓ Pass

Any Text WCAG AA × Fail

Large Text (above 18pt) WCAG AAA × Fail

Any Text WCAG AAA × Fail

Black Background



This preview shows how the HunterLab color 52.9610, 9.4841, 20.9452 looks on a black background.

Color Contrast Check

Large Text (above 18pt) WCAG AA ✓ Pass

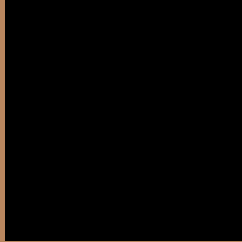
Any Text WCAG AA ✓ Pass

Large Text (above 18pt) WCAG AAA ✓ Pass

Any Text WCAG AAA × Fail

If you want to check with other color combinations, try the [Color Contrast Checker](#).

HunterLab 52.9610, 9.4841, 20.9452 Background



This preview shows how black text looks on a background with the HunterLab color 52.9610, 9.4841, 20.9452.



This preview shows how white text looks on a background with the HunterLab color 52.9610, 9.4841,

Color Blindness Simulation

Color vision deficiency is a very complex topic, and I could not describe the different causes any better than Wikipedia does, so if you want to learn more, you should check out their [article about color blindness](#).

Dichromacy



Original Color

52.9610, 9.4841, 20.9452

Protanopia

53.1984, -5.0706, 19.8134

Deuteranopia

52.8828, 3.7205, 21.0407



Tritanopia

52.8816, 19.0015, 5.9595

Trichromacy



Original Color

52.9610, 9.4841, 20.9452

Protanomaly

53.0361, 0.1418, 20.0403

Deuteranomaly

53.0534, 5.6754, 21.2173

Tritanomaly

52.8538, 15.5406, 12.1858

Monochromacy



Original Color

52.9610, 9.4841, 20.9452

Achromatopsia

52.8104, -2.8178, 2.8693

Achromatomaly

52.5675, 1.1899, 10.1498

CSS Examples

Text

The CSS property to change the color of the text to HunterLab 52.9610, 9.4841, 20.9452 is called "color". The color property can be set on classes, ids or directly on the HTML element.

This example shows how text in the color `rgb(184, 134, 94)` looks like.

```
.text, #text, p{  
    color:rgb(184, 134, 94)  
}
```

If you want to add a text shadow in that color use the text-shadow property, you can generate a text shadow directly with our [CSS Text Shadow Generator](#).

Here you see how black text with a 4 pixel rgb(184, 134, 94) colored shadow looks like.

```
.shadow{ text-shadow: 4px 4px 2px rgb(184, 134, 94) }
```

Border

The CSS property to change the border of an element to HunterLab 52.9610, 9.4841, 20.9452 is called "border". The border property can be set on classes, ids or directly on the HTML element.

This example shows the color as border, it can be applied via the CSS property "border" or "border-color".

```
.border, #border, table{ border:4px solid rgb(184, 134, 94) }
```


If only the border color should be changed use the property border-color.

```
.border{ border-color:rgb(184, 134, 94) }
```

If you want to add a box shadow in that color use:

Here you see how a box with a 4 pixel rgb(184, 134, 94) colored shadow looks like.

```
.boxshadow{ -moz-box-shadow:4px 4px 4px  
4px rgb(184, 134, 94); -webkit-box-  
shadow:4px 4px 4px 4px rgb(184, 134, 94);  
box-shadow:4px 4px 4px 4px rgb(184, 134,  
94) }
```

Background

The CSS property to change the background color of an element to HunterLab 52.9610, 9.4841, 20.9452 is called "background". The background property can be set on classes, ids or directly on the HTML element.

```
.background, #background, body{  
background: rgb(184, 134, 94) }
```

If only the background color should be changed can be used:

```
.background{ background-color: rgb(184,  
134, 94) }
```

This example shows the color as background, it is applied via the CSS property "background".

To optimize and compress your CSS code, you can use our [online CSS compressor and optimizer](#) based on csstidy. If you want to create a linear or radial gradient as background or border, check our [CSS Gradient Generator](#).

Hey! You found this booklet interesting? Support Converting Colors with the new Membership Option!

The pro membership hides all ads, plus gives you double the colors in the color bucket, and more awesome pro features!

[Learn more, Memberships starting at \\$2.50/m!](#)

**Follow me
on Twitter!**

@ConvertingColor