

Converting Colors

HunterLab(52.9651, 12.6455,
12.2874)

Have a look what the booklet for
HunterLab(52.9651, 12.6455,
12.2874) contains.

HunterLab(52.8913, 13.0476, 12.1800)	3
<i>Conversions</i>	4
<i>Details</i>	6
<i>Harmonies</i>	12
<i>Previews</i>	24
<i>Color Blindness Simulation</i>	28
<i>CSS Examples</i>	31

Color

**HunterLab(52.8913, 13.0476,
12.1800)**

Conversions

Conversions Part 1

Format	Color
Hex	B7847A
RGB	183, 132, 122
RGB Percent	72%, 52%, 48%
CMY	0.2824, 0.4823, 0.5216
CMYK	0.00, 0.28, 0.33, 0.28
HSL	10°, 30%, 60%
HSV	10°, 33%, 72%
XYZ	31.2925, 27.9749, 22.1627
YIQ	146.1090, 33.6060, 7.7020

Conversions

Conversions Part 2

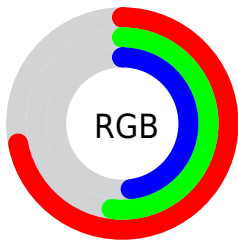
Format	Color
R_{YB}	183, 134, 122
Decimal	12027002
CIE _{Lab}	59.87, 18.24, 13.16
CIE _{LCh}	60, 22.491, 35.801
Yxy	27.9762, 0.3843, 0.3436
Android (android.graphics.Color)	4290217082 (0xFFB7847A)
YUV	146.1090, -11.8857, 32.3534
Hunter-Lab	52.8913, 13.0476, 12.1800

Details

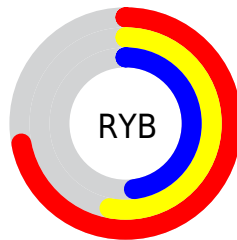
The HunterLab color **52.8913, 13.0476, 12.1800** is a dark color, and the websafe version is hex **CC9999**. A complement of this color would be **61.1901, -15.1453, -5.9687**, and the grayscale version is **53.6951, -2.8650, 2.9174**.

A 20% lighter version of the original color is **75.0195, 13.6778, 14.8179**, and **33.3239, 11.9713, 9.5287** is the 20% darker color. If you saturate the color by 10%, you get **48.6979, 18.6543, 14.4854**, and if you desaturate by 10%, it is **57.3860, 7.7122, 9.7415**.

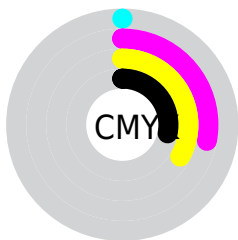
Distribution



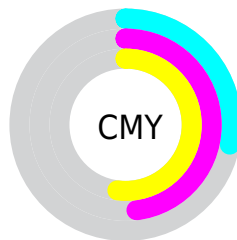
- Red (72%)
- Green (52%)
- Blue (48%)



- Red (72%)
- Yellow (53%)
- Blue (48%)



- Cyan (0%)
- Magenta (28%)
- Yellow (33%)
- Black (28%)



- Cyan (28%)
- Magenta (48%)
- Yellow (52%)

Brightness & Saturation Gradients

These gradients show how the HunterLab color 52.8913, 13.0476, 12.1800 changes by changing the brightness by 10 percent. The first figure shows a shift by +10% for each color and the second figure -10%.

Similar to the brightness gradients but the following saturation gradients show a change of the HunterLab color 52.8913, 13.0476, 12.1800 by changing the saturation by 10% instead.

■ 52.8913, 13.0476,
12.1800

■ 52.8913, 13.0476,
12.1800

170.9834, 13.6434,
23.8516

■ 42.7875, 12.6255,
10.8601

■ 75.1309, 13.6243,
14.7742

■ 33.4233, 12.1023,
9.5082

■ 87.1878, 13.8013,
16.0608

■ 24.8638, 11.4590,
8.1058

■ 99.8284, 13.9126,
17.3468

■ 17.1933, 10.6734,
6.6199

113.0270, 13.9635,
18.6352

■ 10.5302, 9.7191,
5.8534

126.7609, 13.9584,
19.9283

0.0000, INF, NaN

0.0000, NaN, NaN

141.0099, 13.9013,

21.2278

0.0000, NaN, NaN

155.7562, 13.7954,
22.5352

0.0000, NaN, NaN

■ 52.8913, 13.0476,
12.1800

■ 52.8913, 13.0476,
12.1800

■ 48.6979, 18.6543,
14.4854

■ 57.3860, 7.7122,
9.7415

■ 44.8510, 24.4987,
16.5941

■ 62.1370, 2.6589,
7.2100

■ 41.4084, 30.4795,
18.4232

■ 67.1112, -2.1302,
4.6146

■ 38.4312, 36.4129,
19.8697

■ 72.2806, -6.6796,
1.9737

■ 35.9788, 42.0164,
20.8257

■ 77.6223, -11.0168,
-0.7009

■ 34.0972, 46.9254,
21.2160

■ 83.1172, -15.1687,
-3.4018

■ 33.1608, 49.5880,
21.3017

■ 88.7498, -19.1604,
-6.1245

■ 94.0330, -25.7073,
-2.1597

■ 94.2376, -26.0020,
-1.9093

Harmonies

Analogous

The Analogous color harmony consists of three colors that are next to each other on the color wheel.



52.8926, 16.8849, 4.6286



52.8913, 13.0476, 12.1800



52.8926, 4.9806, 16.5568

Triad

The Triadic color harmony groups three colors that are evenly spaced from another and form a triangle on the color wheel.



52.8926, 13.0454, 12.1808



52.8926, -18.6763, 9.6020



52.8926, -0.9406, -17.8126

Complementary

The Complementary color scheme is a pair of colors which are on the opposite of each other on the color wheel.



52.8913, 13.0476, 12.1800



61.1901, -15.1453, -5.9687

Split Complementary

Split-complementary colors differ from the complementary color scheme. The scheme consists of three colors, the original color and two neighbors of the complement color.



52.8926, -10.2028, -15.8379



52.8913, 13.0476, 12.1800



52.8926, -20.0141, 1.0677

Square

The Square scheme is like the rectangle color scheme, but the four colors are evenly spaced on the color wheel.



52.8926, 13.0454, 12.1808



52.8926, -13.2262, 15.2649



52.8926, -17.0201, -8.4953



52.8926, 8.4477, -13.4911

Rectangle

The Rectangle color scheme consists of four colors that form a rectangle on the color wheel.



52.8913, 13.0476, 12.1800



52.8926, -1.4625, 17.6051



52.8926, -17.0201, -8.4953



52.8926, -4.1740, -17.8715

Sweetspot

The Sweet Spot groups the original color and five complimentary colors.



52.8926, 13.0454, 12.1808



85.2347, 1.4913, 8.5566



51.9968, 26.1136, -13.0764



39.6239, 1.1285, 4.2488



96.5975, -5.1542, 5.2483



43.2801, -2.3093, 2.3515

Same Dimension

The Same Dimension uses a secret algorithm to generate beautiful new colors.



52.8926, 13.0454, 12.1808



66.6285, 22.9247, 18.5832



60.9837, -1.6412, 19.6478



30.4037, 0.3396, 2.9314



27.8215, 41.0194, 17.8616



5.8944, 5.7403, 3.7326

Inverse Universe

The Inverse Universe completely reimagines the original color for something new.



61.1901, -15.1453, -5.9687



79.9540, -22.6522, -10.6282



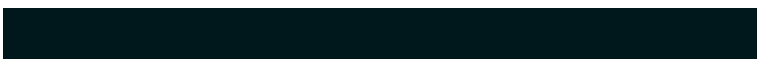
52.2560, -1.1029, -18.6495



31.5485, -3.5079, 0.4361



42.8498, -16.8725, -17.1356



8.4551, -3.7002, -2.5806

Previews

White Background



This preview shows how the HunterLab color 52.8913, 13.0476, 12.1800 looks on a white background.

Color Contrast Check

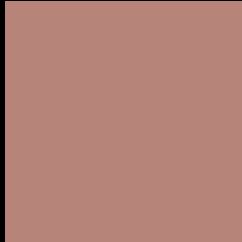
Large Text (above 18pt) WCAG AA ✓ Pass

Any Text WCAG AA × Fail

Large Text (above 18pt) WCAG AAA × Fail

Any Text WCAG AAA × Fail

Black Background



This preview shows how the HunterLab color 52.8913, 13.0476, 12.1800 looks on a black background.

Color Contrast Check

Large Text (above 18pt) WCAG AA ✓ Pass

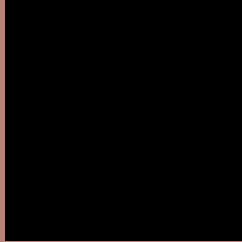
Any Text WCAG AA ✓ Pass

Large Text (above 18pt) WCAG AAA ✓ Pass

Any Text WCAG AAA × Fail

If you want to check with other color combinations, try the [Color Contrast Checker](#).

HunterLab 52.8913, 13.0476, 12.1800 Background



This preview shows how black text looks on a background with the HunterLab color 52.8913, 13.0476, 12.1800.



This preview shows how white text looks on a background with the HunterLab color 52.8913, 13.0476,

Color Blindness Simulation

Color vision deficiency is a very complex topic, and I could not describe the different causes any better than Wikipedia does, so if you want to learn more, you should check out their [article about color blindness](#).

Dichromacy



Original Color

52.8913, 13.0476, 12.1800

Protanopia

52.9947, -3.0369, 9.7538

Deuteranopia

52.9728, 3.7375, 12.4607



Tritanopia

52.8005, 17.5314, 5.4141

Trichromacy



Original Color

52.8913, 13.0476, 12.1800

Protanomaly

52.9614, 2.5250, 10.5814

Deuteranomaly

52.7949, 7.3112, 12.3454

Tritanomaly

52.7722, 15.8314, 7.8642

Monochromacy



Original Color

52.8913, 13.0476, 12.1800

Achromatopsia

53.6135, -2.8607, 2.9129

Achromatomaly

53.1289, 2.2341, 6.3655

CSS Examples

Text

The CSS property to change the color of the text to HunterLab 52.8913, 13.0476, 12.1800 is called "color". The color property can be set on classes, ids or directly on the HTML element.

This example shows how text in the color `rgb(183, 132, 122)` looks like.

```
.text, #text, p{  
    color:rgb(183, 132, 122)  
}
```

If you want to add a text shadow in that color use the text-shadow property, you can generate a text shadow directly with our [CSS Text Shadow Generator](#).

Here you see how black text with a 4 pixel rgb(183, 132, 122) colored shadow looks like.

```
.shadow{ text-shadow: 4px 4px 2px rgb(183, 132, 122) }
```

Border

The CSS property to change the border of an element to HunterLab 52.8913, 13.0476, 12.1800 is called "border". The border property can be set on classes, ids or directly on the HTML element.

This example shows the color as border, it can be applied via the CSS property "border" or "border-color".

```
.border, #border, table{ border:4px solid rgb(183, 132, 122) }
```


If only the border color should be changed use the property `border-color`.

```
.border{ border-color:rgb(183, 132, 122) }
```

If you want to add a box shadow in that color use:

Here you see how a box with a 4 pixel `rgb(183, 132, 122)` colored shadow looks like.

```
.boxshadow{ -moz-box-shadow:4px 4px 4px  
4px rgb(183, 132, 122); -webkit-box-  
shadow:4px 4px 4px 4px rgb(183, 132, 122);  
box-shadow:4px 4px 4px 4px rgb(183, 132,  
122) }
```

Background

The CSS property to change the background color of an element to HunterLab 52.8913, 13.0476, 12.1800 is called "background". The background property can be set on classes, ids or directly on the HTML element.

```
.background, #background, body{  
background: rgb(183, 132, 122) }
```

If only the background color should be changed can be used:

```
.background{ background-color: rgb(183,  
132, 122) }
```

This example shows the color as background, it is applied via the CSS property "background".

To optimize and compress your CSS code, you can use our [online CSS compressor and optimizer](#) based on csstidy. If you want to create a linear or radial gradient as background or border, check our [CSS Gradient Generator](#).

Hey! You found this booklet interesting? Support Converting Colors with the new Membership Option!

The pro membership hides all ads, plus gives you double the colors in the color bucket, and more awesome pro features!

[Learn more, Memberships starting at \\$2.50/m!](#)

**Follow me
on Twitter!**

@ConvertingColor