

Converting Colors

HunterLab(52.9976, 8.3591,
9.9560)

Have a look what the booklet for
HunterLab(52.9976, 8.3591, 9.9560)
contains.

HunterLab(52.9633, 8.1998, 9.9177)	3
<i>Conversions</i>	4
<i>Details</i>	6
<i>Harmonies</i>	12
<i>Previews</i>	24
<i>Color Blindness Simulation</i>	28
<i>CSS Examples</i>	31

Color

**HunterLab(52.9633, 8.1998,
9.9177)**

Conversions

Conversions Part 1

Format	Color
Hex	AD8880
RGB	173, 136, 128
RGB Percent	68%, 53%, 50%
CMY	0.3216, 0.4666, 0.4980
CMYK	0.00, 0.21, 0.26, 0.32
HSL	11°, 22%, 59%
HSV	11°, 26%, 68%
XYZ	29.9341, 28.0511, 24.2588
YIQ	146.1510, 24.6200, 5.3560

Conversions

Conversions Part 2

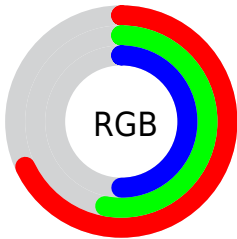
Format	Color
R_{YB}	173, 138, 128
Decimal	11372672
CIE _{Lab}	59.94, 12.88, 9.68
CIE _{LCh}	60, 16.107, 36.930
Yxy	28.0524, 0.3640, 0.3411
Android (android.graphics.Color)	4289562752 (0xFFAD8880)
YUV	146.1510, -8.9484, 23.5466
Hunter-Lab	52.9633, 8.1998, 9.9177

Details

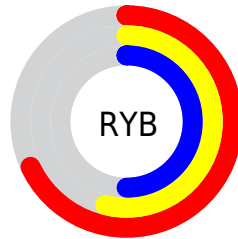
The HunterLab color $52.9633, 8.1998, 9.9177$ is a dark color, and the websafe version is hex $CC9999$. A complement of this color would be $58.7500, -11.9683, -3.9068$, and the grayscale version is $53.7031, -2.8655, 2.9178$.

A 20% lighter version of the original color is $75.0929, 8.4800, 11.9041$, and $33.4861, 7.9506, 7.6759$ is the 20% darker color. If you saturate the color by 10%, you get $48.8783, 13.1353, 12.2106$, and if you desaturate by 10%, it is $57.2917, 3.5230, 7.5159$.

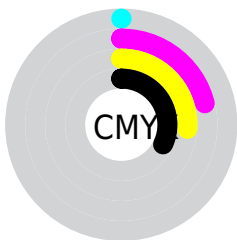
Distribution



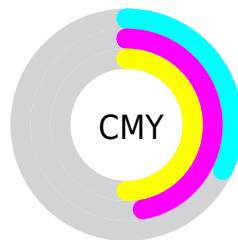
- Red (68%)
- Green (53%)
- Blue (50%)



- Red (68%)
- Yellow (54%)
- Blue (50%)



- Cyan (0%)
- Magenta (21%)
- Yellow (26%)
- Black (32%)



- Cyan (32%)
- Magenta (47%)
- Yellow (50%)

Brightness & Saturation Gradients

These gradients show how the HunterLab color 52.9633, 8.1998, 9.9177 changes by changing the brightness by 10 percent. The first figure shows a shift by +10% for each color and the second figure -10%.

Similar to the brightness gradients but the following saturation gradients show a change of the HunterLab color 52.9633, 8.1998, 9.9177 by changing the saturation by 10% instead.

■ 52.9633, 8.1998,
9.9177

■ 52.9633, 8.1998,
9.9177

171.0898, 6.8213,
20.1463

■ 42.8546, 8.0468,
8.8136

■ 75.2118, 8.2769,
12.1275

■ 33.4850, 7.8074,
7.6990

■ 87.2728, 8.2200,
13.2399

■ 24.9197, 7.4646,
6.5624

■ 99.9173, 8.1065,
14.3612

■ 17.2428, 6.9971,
5.3823

113.1197, 7.9407,
15.4931

■ 10.5723, 6.3738,
4.4782

126.8572, 7.7264,
16.6367

0.0000, INF, NaN

0.0000, NaN, NaN

141.1097, 7.4667,

17.7931

0.0000, NaN, NaN

155.8593, 7.1642,
18.9628

0.0000, NaN, NaN

■ 52.9633, 8.1998,
9.9177

■ 52.9633, 8.1998,
9.9177

■ 48.8783, 13.1353,
12.2106

■ 57.2917, 3.5230,
7.5159

■ 45.0709, 18.3280,
14.3475

■ 61.8279, -0.9014,
5.0337

■ 41.5874, 23.7335,
16.2672

■ 66.5471, -5.0969,
2.4926

■ 38.4787, 29.2541,
17.8886

■ 71.4277, -9.0884,
-0.0932

■ 35.7991, 34.7146,
19.1162

■ 76.4519, -12.9008,
-2.7146

■ 33.6000, 39.8526,
19.8576

■ 81.6049, -16.5577,
-5.3655

■ 31.9188, 44.3330,
20.0763

■ 86.8745, -20.0799,
-8.0420

■ 31.3883, 45.8279,
20.1436

■ 91.8394, -25.8248,
-4.9382

■ 93.6078, -28.3411,
-2.7388

Harmonies

Analogous

The Analogous color harmony consists of three colors that are next to each other on the color wheel.



52.9645, 10.9936, 4.3832



52.9633, 8.1998, 9.9177



52.9645, 2.4702, 13.2286

Triad

The Triadic color harmony groups three colors that are evenly spaced from another and form a triangle on the color wheel.



52.9645, 8.1979, 9.9185



52.9645, -14.4895, 7.5933



52.9645, -1.2187, -11.2362

Complementary

The Complementary color scheme is a pair of colors which are on the opposite of each other on the color wheel.



52.9633, 8.1998, 9.9177



58.7500, -11.9683, -3.9068

Split Complementary

Split-complementary colors differ from the complementary color scheme. The scheme consists of three colors, the original color and two neighbors of the complement color.



52.9645, -7.9275, -10.0907



52.9633, 8.1998, 9.9177



52.9645, -15.3648, 1.3376

Square

The Square scheme is like the rectangle color scheme, but the four colors are evenly spaced on the color wheel.



52.9645, 8.1979, 9.9185



52.9645, -10.5661, 12.0110



52.9645, -13.0214, -5.2734



52.9645, 5.3797, -8.2290

Rectangle

The Rectangle color scheme consists of four colors that form a rectangle on the color wheel.



52.9633, 8.1998, 9.9177



52.9645, -2.1166, 13.9995



52.9645, -13.0214, -5.2734



52.9645, -3.5374, -11.3296

Sweetspot

The Sweet Spot groups the original color and five complimentary colors.



52.9645, 8.1979, 9.9185



81.4281, 0.0273, 7.4509



52.0171, 18.0601, -8.4784



37.5402, 0.4136, 3.7024



93.2148, -4.9737, 5.0645



40.3295, -2.1519, 2.1912

Same Dimension

The Same Dimension uses a secret algorithm to generate beautiful new colors.



52.9645, 8.1979, 9.9185



67.8131, 14.5817, 14.9917



59.0735, -2.5851, 15.8583



28.7004, 0.2520, 2.7880



27.0178, 38.9175, 17.3296



5.1979, 4.5203, 3.2820

Inverse Universe

The Inverse Universe completely reimagines the original color for something new.



58.7500, -11.9683, -3.9068



77.1082, -17.9303, -7.2442



52.2031, -1.5372, -12.7622



29.7088, -3.2426, 0.3827



40.6874, -15.4412, -17.5228



7.2316, -3.1571, -2.2237

Previews

White Background



This preview shows how the HunterLab color 52.9633, 8.1998, 9.9177 looks on a white background.

Color Contrast Check

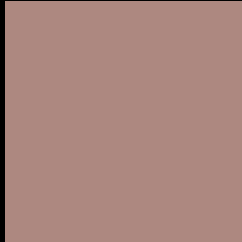
Large Text (above 18pt) WCAG AA ✓ Pass

Any Text WCAG AA × Fail

Large Text (above 18pt) WCAG AAA × Fail

Any Text WCAG AAA × Fail

Black Background



This preview shows how the HunterLab color 52.9633, 8.1998, 9.9177 looks on a black background.

Color Contrast Check

Large Text (above 18pt) WCAG AA ✓ Pass

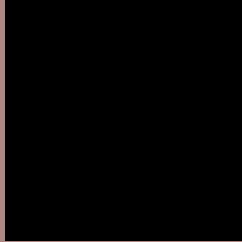
Any Text WCAG AA ✓ Pass

Large Text (above 18pt) WCAG AAA ✓ Pass

Any Text WCAG AAA × Fail

If you want to check with other color combinations, try the [Color Contrast Checker](#).

HunterLab 52.9633, 8.1998, 9.9177 Background



This preview shows how black text looks on a background with the HunterLab color 52.9633, 8.1998, 9.9177.



This preview shows how white text looks on a background with the HunterLab color 52.9633, 8.1998,

9.9177.

Color Blindness Simulation

Color vision deficiency is a very complex topic, and I could not describe the different causes any better than Wikipedia does, so if you want to learn more, you should check out their [article about color blindness](#).

Dichromacy



Original Color

52.9633, 8.1998, 9.9177

Protanopia

53.0061, -2.7943, 8.1955

Deuteranopia

52.9121, 3.8206, 10.1721



Tritanopia

53.0827, 12.1496, 3.4511

Trichromacy



Original Color

52.9633, 8.1998, 9.9177

Protanomaly

52.8749, 1.0560, 8.5218

Deuteranomaly

52.9472, 5.3377, 10.2353

Tritanomaly

53.0675, 10.4191, 6.0182

Monochromacy



Original Color

52.9633, 8.1998, 9.9177

Achromatopsia

53.6135, -2.8607, 2.9129

Achromatomaly

53.1771, 1.0741, 5.5523

CSS Examples

Text

The CSS property to change the color of the text to HunterLab 52.9633, 8.1998, 9.9177 is called "color". The color property can be set on classes, ids or directly on the HTML element.

This example shows how text in the color `rgb(173, 136, 128)` looks like.

```
.text, #text, p{  
    color:rgb(173, 136, 128)  
}
```

If you want to add a text shadow in that color use the text-shadow property, you can generate a text shadow directly with our [CSS Text Shadow Generator](#).

Here you see how black text with a 4 pixel rgb(173, 136, 128) colored shadow looks like.

```
.shadow{ text-shadow: 4px 4px 2px rgb(173, 136, 128) }
```

Border

The CSS property to change the border of an element to HunterLab 52.9633, 8.1998, 9.9177 is called "border". The border property can be set on classes, ids or directly on the HTML element.

This example shows the color as border, it can be applied via the CSS property "border" or "border-color".

```
.border, #border, table{ border:4px solid rgb(173, 136, 128) }
```


If only the border color should be changed use the property `border-color`.

```
.border{ border-color:rgb(173, 136, 128) }
```

If you want to add a box shadow in that color use:

Here you see how a box with a 4 pixel `rgb(173, 136, 128)` colored shadow looks like.

```
.boxshadow{ -moz-box-shadow:4px 4px 4px  
4px rgb(173, 136, 128); -webkit-box-  
shadow:4px 4px 4px 4px rgb(173, 136, 128);  
box-shadow:4px 4px 4px 4px rgb(173, 136,  
128) }
```

Background

The CSS property to change the background color of an element to HunterLab 52.9633, 8.1998, 9.9177 is called "background". The background property can be set on classes, ids or directly on the HTML element.

```
.background, #background, body{  
background: rgb(173, 136, 128) }
```

If only the background color should be changed can be used:

```
.background{ background-color: rgb(173,  
136, 128) }
```

This example shows the color as background, it is applied via the CSS property "background".

To optimize and compress your CSS code, you can use our [online CSS compressor and optimizer](#) based on csstidy. If you want to create a linear or radial gradient as background or border, check our [CSS Gradient Generator](#).

Hey! You found this booklet interesting? Support Converting Colors with the new Membership Option!

The pro membership hides all ads, plus gives you double the colors in the color bucket, and more awesome pro features!

[Learn more, Memberships starting at \\$2.50/m!](#)

**Follow me
on Twitter!**

@ConvertingColor